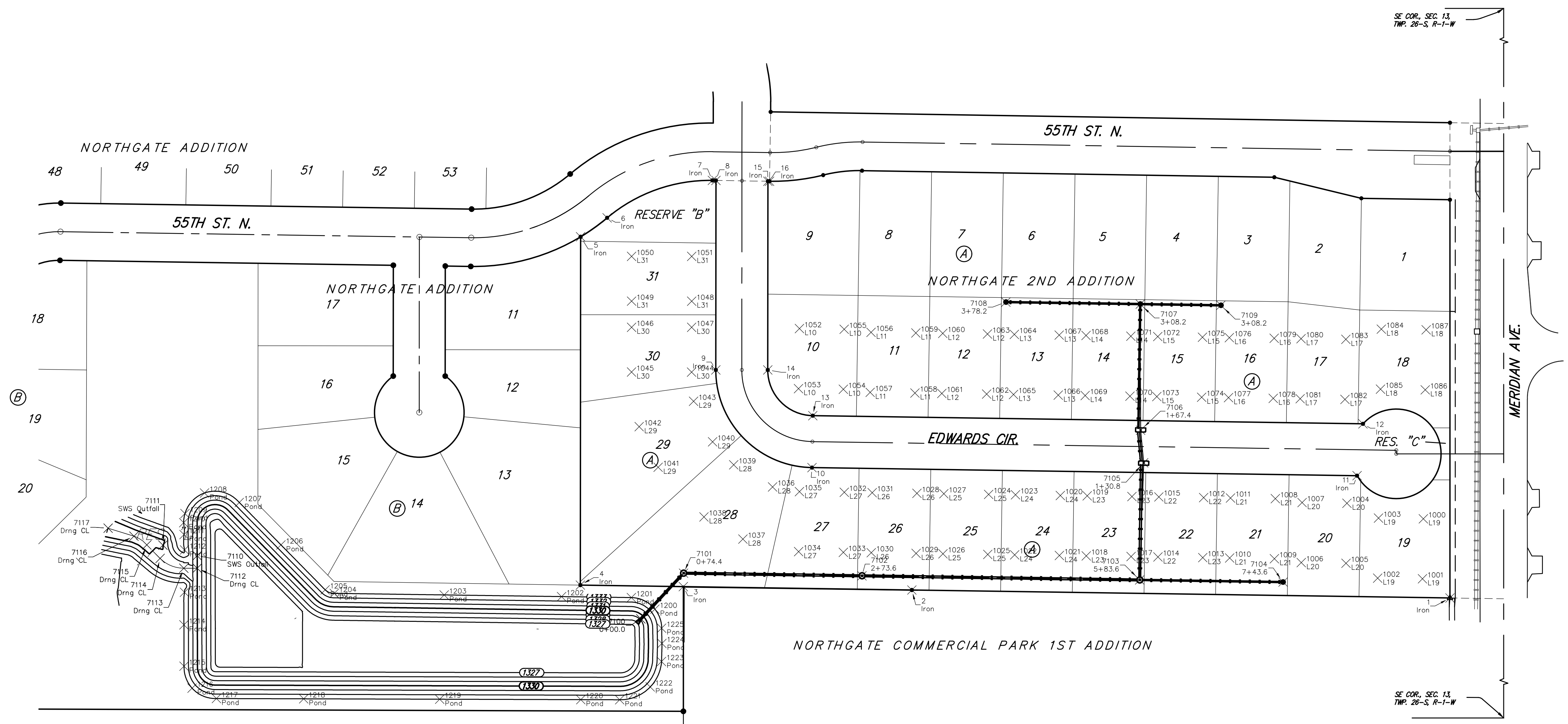
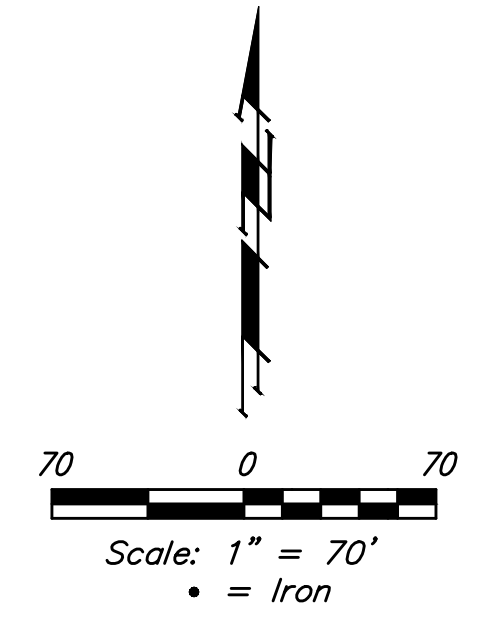


**BENCHMARKS:**  
**BM #1:** Chiseled Square, Center of Storm Water Sewer Vault, West side of Meridian Ave, 145' South & 30.6' East of the Northeast Cor., Lot 1, Block A, Northgate 2nd Addition Elev. = 1334.49 NAVD88  
**BM #2:** "X" on South End of Catch Basin, East Side of Meridian Ave, 42.3' South of 55th St. N. & 30' East of Meridian Ave. centerline Elev. = 1332.58 NAVD88



POND

Point #	Northing	Easting	Description
1200	6442.34	4052.58	Pond
1201	6455.30	4026.38	Pond
1202	6456.40	3948.42	Pond
1203	6458.26	3817.39	Pond
1204	6459.99	3694.67	Pond
1205	6464.00	3684.53	Pond
1206	6514.14	3635.23	Pond
1207	6561.49	3588.73	Pond
1208	6572.05	3549.98	Pond
1209	6549.07	3528.12	Pond
1210	6538.97	3526.65	Pond
1211	6525.71	3527.07	Pond
1212	6508.51	3527.59	Pond
1213	6461.22	3527.55	Pond
1214	6424.83	3526.95	Pond
1215	6378.73	3527.05	Pond
1216	6354.19	3536.07	Pond
1217	6342.60	3563.27	Pond
1218	6342.31	3660.60	Pond
1219	6341.85	3812.46	Pond
1220	6341.37	3969.88	Pond
1221	6341.26	4013.32	Pond
1222	6355.61	4047.40	Pond
1223	6383.93	4059.98	Pond
1224	6404.12	4060.42	Pond
1225	6421.17	4060.11	Pond

BUILDING PADS

Point #	Northing	Easting	Description
1000	6543.32	4910.31	L19
1001	6476.28	4909.31	L19
1002	6477.03	4859.32	L19
1003	6544.06	4860.31	L19
1004	6560.68	4825.02	L20
1005	6493.64	4824.02	L20
1006	6494.38	4774.03	L20
1007	6561.42	4775.02	L20
1008	6565.79	4745.08	L21
1009	6498.75	4744.09	L21
1010	6499.49	4694.10	L21
1011	6566.53	4695.09	L21
1012	6566.97	4665.09	L22
1013	6499.94	4664.10	L23
1014	6500.68	4614.10	L22
1015	6567.71	4615.10	L22
1016	6568.16	4585.10	L23
1017	6501.12	4584.11	L23
1018	6501.86	4534.11	L23
1019	6568.90	4535.11	L23
1020	6569.34	4505.11	L24
1021	6502.31	4504.12	L24

Point #	Northing	Easting	Description
1022	6503.05	4454.12	L24
1023	6570.08	4455.11	L24
1024	6570.53	4425.12	L25
1025	6503.49	4424.12	L25
1026	6504.23	4374.13	L25
1027	6571.27	4375.12	L25
1028	6571.71	4345.13	L26
1029	6504.68	4344.13	L26
1030	6505.42	4294.14	L26
1031	6572.45	4295.13	L26
1032	6572.91	4263.97	L27
1033	6505.88	4262.98	L27
1034	6506.62	4212.98	L27
1035	6573.65	4213.97	L27
1036	6578.90	4184.02	L28
1037	6520.64	4150.85	L28
1038	6545.39	4107.40	L28
1039	6603.64	4140.58	L28
1040	6629.23	4116.97	L29
1041	6600.85	4056.24	L29
1042	6646.15	4035.07	L29
1043	6674.53	4095.81	L29

Point #	Northing	Easting	Description
1044	6707.10	4093.59	L30
1045	6707.15	4026.55	L30
1046	6757.15	4026.59	L30
1047	6757.10	4093.63	L30
1048	6786.28	4093.66	L31
1049	6786.34	4026.61	L31
1050	6836.34	4026.65	L31
1051	6836.28	4093.69	L31
1052	6755.71	4213.92	L10
1053	6688.67	4212.93	L10
1054	6687.93	4262.92	L10
1055	6754.97	4263.92	L10
1056	6751.53	4293.87	L11
1057	6684.50	4292.88	L11
1058	6683.76	4342.87	L11
1059	6750.79	4343.86	L11
1060	6750.35	4373.86	L12
1061	6683.31	4372.87	L12
1062	6682.57	4422.86	L12
1063	6749.61	4423.86	L12
1064	6749.16	4453.85	L13
1065	6682.13	4452.86	L13

Point #	Northing	Easting	Description
1066	6681.39	4502.85	L13
1067	6748.42	4503.85	L13
1068	6747.98	4533.84	L14
1069	6680.94	4532.85	L14
1070	6680.20	4582.84	L14
1071	6747.24	4583.84	L14
1072	6746.79	4613.83	L15
1073	6679.76	4612.84	L15
1074	6679.02	4662.84	L15
1075	6746.05	4663.83	L15
1076	6745.61	4693.83	L16
1077	6678.57	4692.83	L16
1078	6677.83	4742.83	L16
1079	6744.87	4743.82	L16
1080	6744.42	4773.82	L17
1081	6677.39	4772.82	L17
1082	6676.65	4822.82	L17
1083	6743.68	4823.81	L17
1084	6755.08	4863.44	L18
1085	6688.04	4862.44	L18
1086	6687.30	4912.44	L18
1087	6754.34	4913.43	L18

POND OUTFALL/DRAINAGE DITCH

Point #	Northing	Easting	Description
7100	6431.47	4036.92	0+00.0
7101	6482.56	4084.62	0+74.4
7102	6479.61	4283.76	2+73.6
7103	6475.02	4593.72	5+83.6
7104	6472.65	4753.70	7+43.6
7105	6605.80	4598.16	1+30.8
7106	6642.19	4594.78	1+67.4
7107	6783.04	4594.37	3+08.2
7108	6785.27	4444.39	3+78.2
7109	6781.71	4684.36	3+08.2
7110	6502.03	3541.75	SWS Outfall
7111	6513.85	3503.54	SWS Outfall
7112	6488.09	3541.79	Drng CL
7113	6488.05	3526.79	Drng CL
7114	6499.02	3500.34	Drng CL
7115	6514.11	3485.52	Drng CL
7116	6523.86	3471.16	Drng CL
7117	6532.78	3442.32	Drng CL

IRONS

Point #	Northing	Easting	Description
1	6454.89	4940.00	Iron
2	6463.78	4339.42	Iron
3	6467.56	4084.40	Iron
4	6469.26	3969.41	Iron
5	6858.21	3969.71	Iron
6	6879.39	3999.31	Iron
7	6921.20	4116.79	Iron
8	6921.14	4120.76	Iron
9	6709.52	4120.60	Iron
10	6600.45	4227.98	Iron
11	6591.44	4836.30	Iron
12	6649.35	4842.93	Iron
13	6658.44	4228.84	Iron
14	6709.48	4178.60	Iron
15	6920.22	4178.76	Iron
16	6920.19	4180.59	Iron

**Baughman**

Northgate 2nd Addition  
**COORDINATE SHEET**  
 Sanitary Sewer Improvements

---

Baughman Company, P.A. 315 Ellis St. Wichita, KS 67211 P:316-262-7271 F:316-262-0149  
 ENGINEERING | SURVEYING | PLANNING | LANDSCAPE ARCHITECTURE

PROJECT NUMBER  
468 - 85142

DESIGN  
AEG

DRAWN  
DJL

---

REVISIONS:

APPROVED  
DATE  
11/16

---

SCALE  
Noted

SHEET  
**18 OF 20**