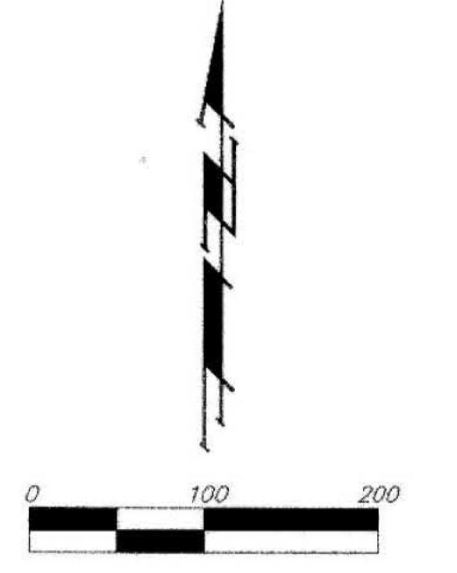
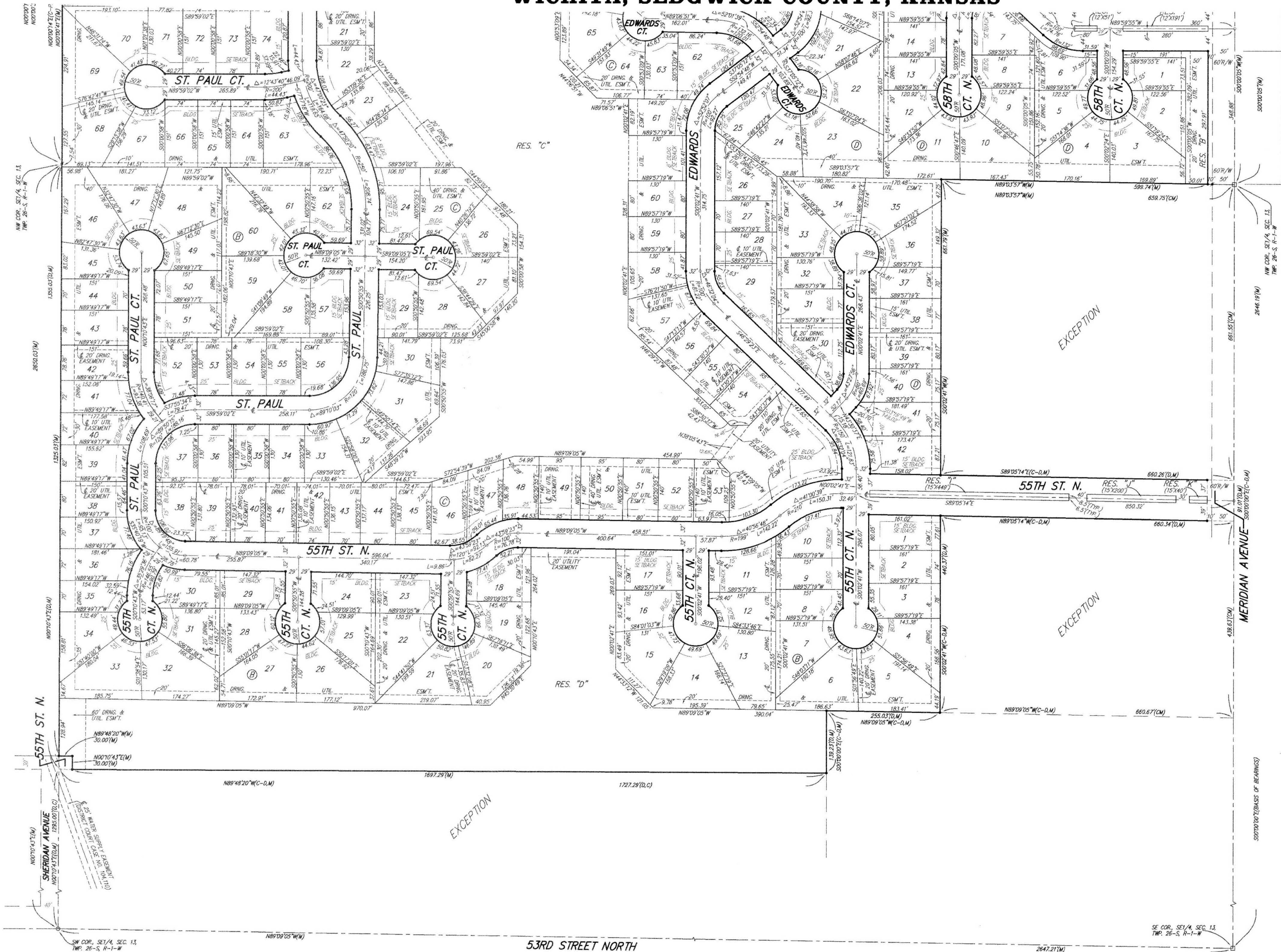


NORTHGATE ADDITION WICHITA, SEDGWICK COUNTY, KANSAS



- #4 REBAR W/ "BAUGHMAN" SET (SET)
- #4 REBAR W/ "BAUGHMAN" CAP (FOUND)
- 1/2" IRON (FOUND)
- #5 REBAR (FOUND)
- △ 1" SQUARE IRON BAR (FOUND)
- #5 REBAR W/ ALLEGIBLE CAP (FOUND)

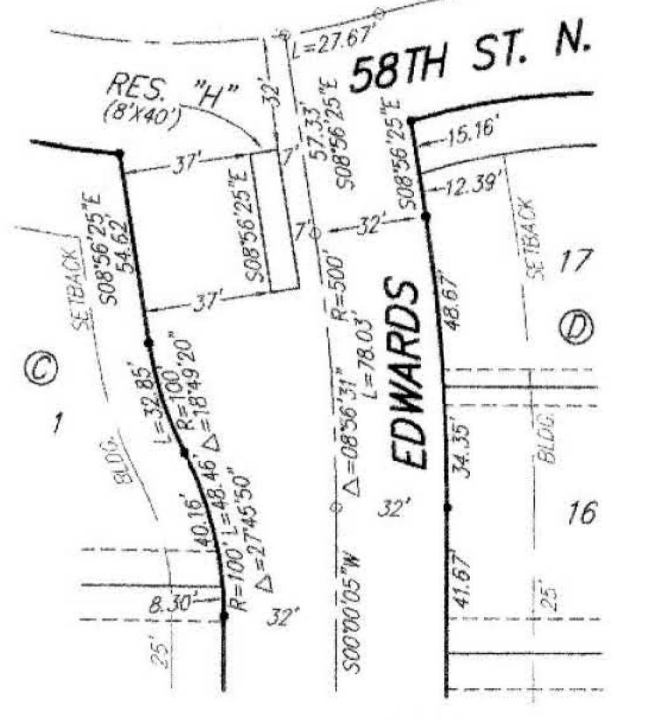
- (M) = MEASURED
- (D) = DESCRIBED
- (C) = CALCULATED
- (PF) = PLATTED INFO PER FOX MEADOW ADD.
- (C-PF) = CALCULATED INFO PER FOX MEADOW ADD.
- (CM) = CALCULATED PER MEASURED INFO.
- (C-D) = CALCULATED PER DESCRIBED INFO.

MINIMUM BUILDING PAD ELEVATIONS FOR LOWEST OPENING TO THE STRUCTURES		
LOT	BLOCK	ELEVATION
1-5	A	1337.0
6, 7, 13-22	B	1335.0
26, 27, 32, 33	B	1335.0
6-13, 15-26	C	1335.0
30-33, 43-52	C	1335.0
55-61, 64-66	C	1335.0
53, 54	C	1336.0

BENCHMARK:
BENT 60# NAIL IN LIGHT POLE,
55' SSW OF THE E 1/4 COR.,
SEC. 13, TWP. 26-S, R-1-W
ELEV. = 1336.54 NCV029

RAILROAD SPIKE IN E. FACE OF N. 1/4 POLE,
60' ± S. OF N. LINE, S1/2 NE 1/4, SEC. 13,
TWP. 26-S, R-1-W
ELEV. = 1335.93 NCV029

"C" CUT ON TOP OF NE COR. OF
WATER VAULT, 437' ± E. & 54' ± N. OF
S1/4 COR. SEC. 13, TWP. 26-S, R-1-W
ELEV. = 1334.81 NCV029



DETAIL "A"
(NO SCALE)

NOTE:
A master grading plan for drainage has been developed for this subdivision and is on file with the City of Wichita, Kansas. All drainage easements, right-of-ways, or reserves shall remain at established grades or as modified with the approval of the City Engineer of the City of Wichita, Kansas. No obstructions which impede the flow of this drainage system be allowed.