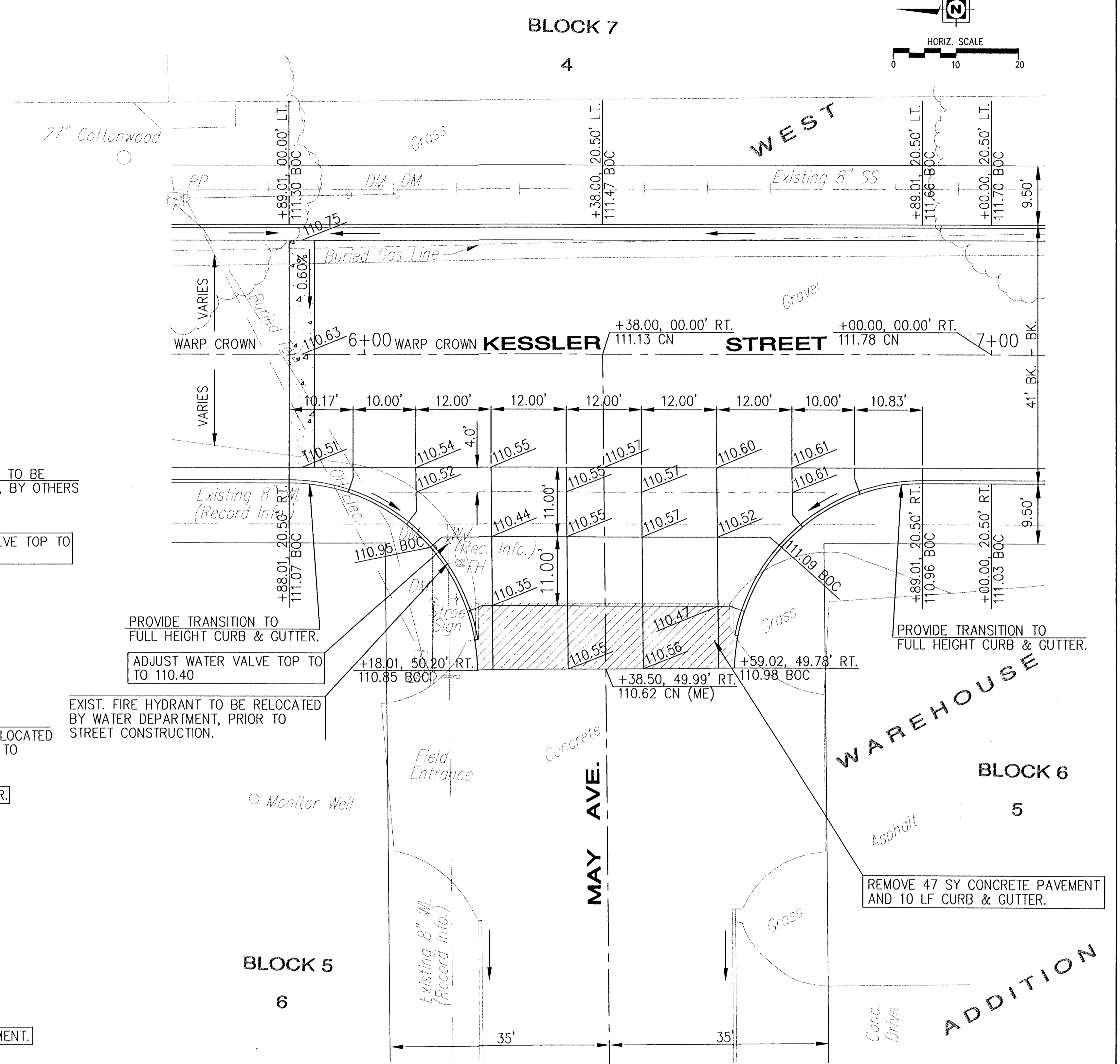


KESSLER ST. AND DORA AVE.



KESSLER ST. AND MAY AVE.

- NOTES:**
- UNLESS OTHERWISE INDICATED, DIMENSIONS ARE MEASURED TO BACK OF CURB.
 - ALL TOP OF CURB GRADES ARE TO TOP OF COMBINED CURB & GUTTER. 0.25' MUST BE SUBTRACTED FROM TOP OF CURB ELEVATIONS TO TOP OF ROLL CURB.

YOUNG & ASSOCIATES, PA
 Civil and Environmental Engineers
 100 South Georgia
 Derby Kansas, 67037
 Tel: (316) 788-2552
 Fax: (316) 788-4408

City of Wichita
 Sedgwick County, Kansas

INTERSECTION DETAILS

Street Improvements in Kessler Street, from Dora to May

Date: October 2002	Engr.: CRY	Tech.: DAS, JVS
Y&A Proj. No.: 02-144	Scale: As Noted	

Sheet No. 6 of 15

C:\vacad\in\144\F\I\NL\144\interf.dwg Mon Nov 25 12:01:42 2002