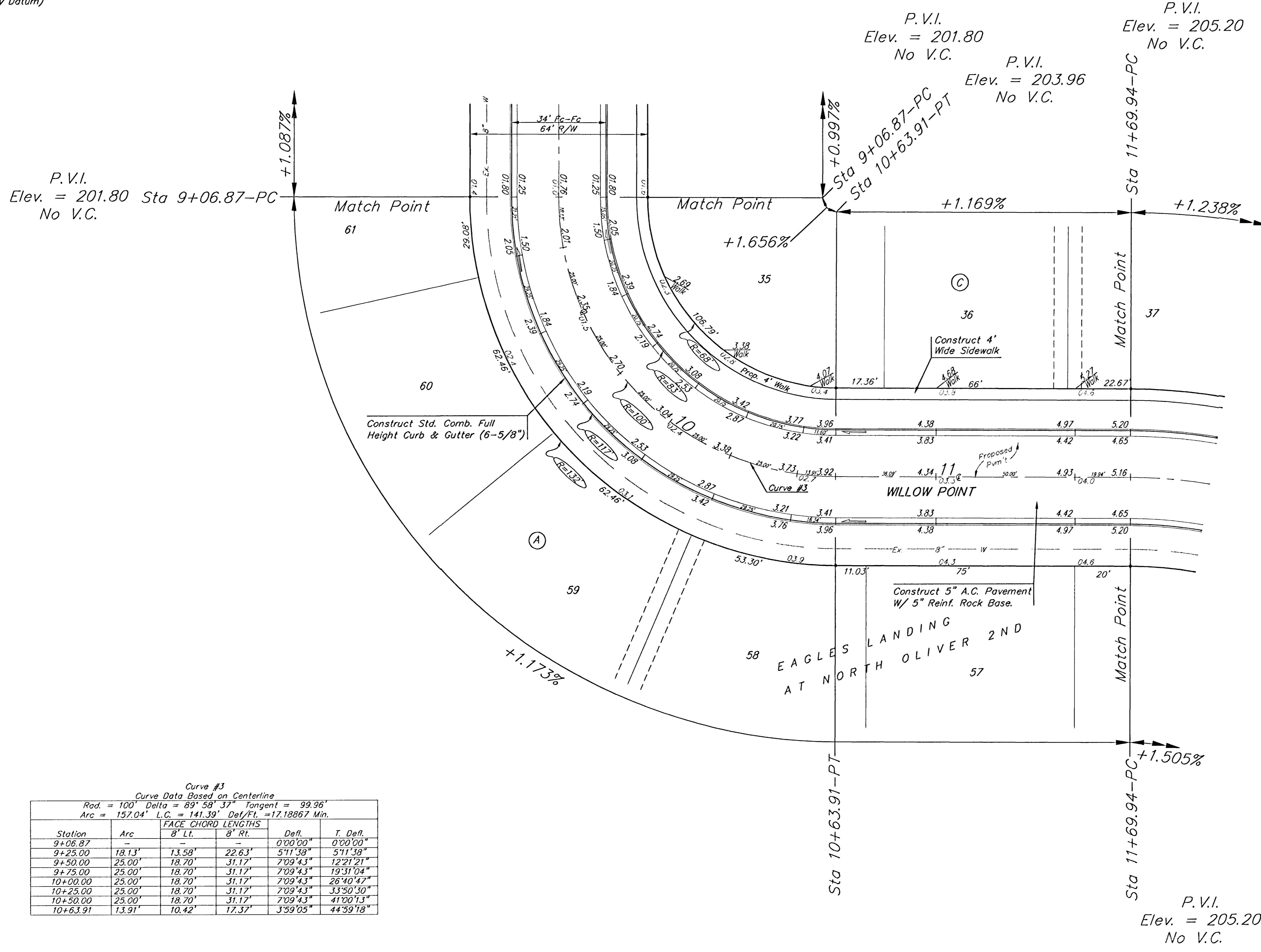


**BENCHMARKS:**  
 Oliver and 45th St. N. - Top of  
 Brass Plate on SW Corner of  
 R.C.B.C. East of Intersection.  
 ELEV. = 1398.88 NGVD  
 (211.48 City Datum)

60d Nail in H.L.P., 33' S. of the  
 NW Corner of Gov't. Lot 1 in the  
 NE1/4 of Sec. 26, TWP. 26-S,  
 R--1-E of the 6th P.M. Elev. =  
 1377.19 NGVD  
 (189.79 City Datum)

Scale: 1" = 20'  
 • = Iron



Curve #3  
 Curve Data Based on Centerline  
 Rad. = 100' Delta = 89° 58' 37" Tangent = 99.96'  
 Arc = 157.04' L.C. = 141.39' Def/ft. = 17.18867 Min.

Station	Arc	FACE CHORD LENGTHS		Defl.	T. Defl.
		8' Lt.	8' Rt.		
9+06.87	-	-	-	0'00"00"	0'00"00"
9+25.00	18.13'	13.58'	22.63'	5'11"38"	5'11"38"
9+50.00	25.00'	18.70'	31.17'	7'09"43"	12'21"21"
9+75.00	25.00'	18.70'	31.17'	7'09"43"	19'31"04"
10+00.00	25.00'	18.70'	31.17'	7'09"43"	26'40"47"
10+25.00	25.00'	18.70'	31.17'	7'09"43"	33'50"30"
10+50.00	25.00'	18.70'	31.17'	7'09"43"	41'00"13"
10+63.91	13.91'	10.42'	17.37'	3'59"05"	44'39"18"

EAGLES LANDING AT NORTH OLIVER 2ND ADDITION - PH. II  
**WILLOW POINT**  
 STA 3+82.82 TO STA 11+89.94

**BAUGHMAN COMPANY P.A.**  
 ENGINEERING, SURVEYING, & PLANNING  
 316-262-7271 • 315 ELLIS • WICHITA, KANSAS 67211

PROJECT NUMBER  
**472-83465**

DESIGN: NBW DRAWN: TMS APPROVED: DATE: 03/03 SCALE: Noted SHEET: 8 OF 40