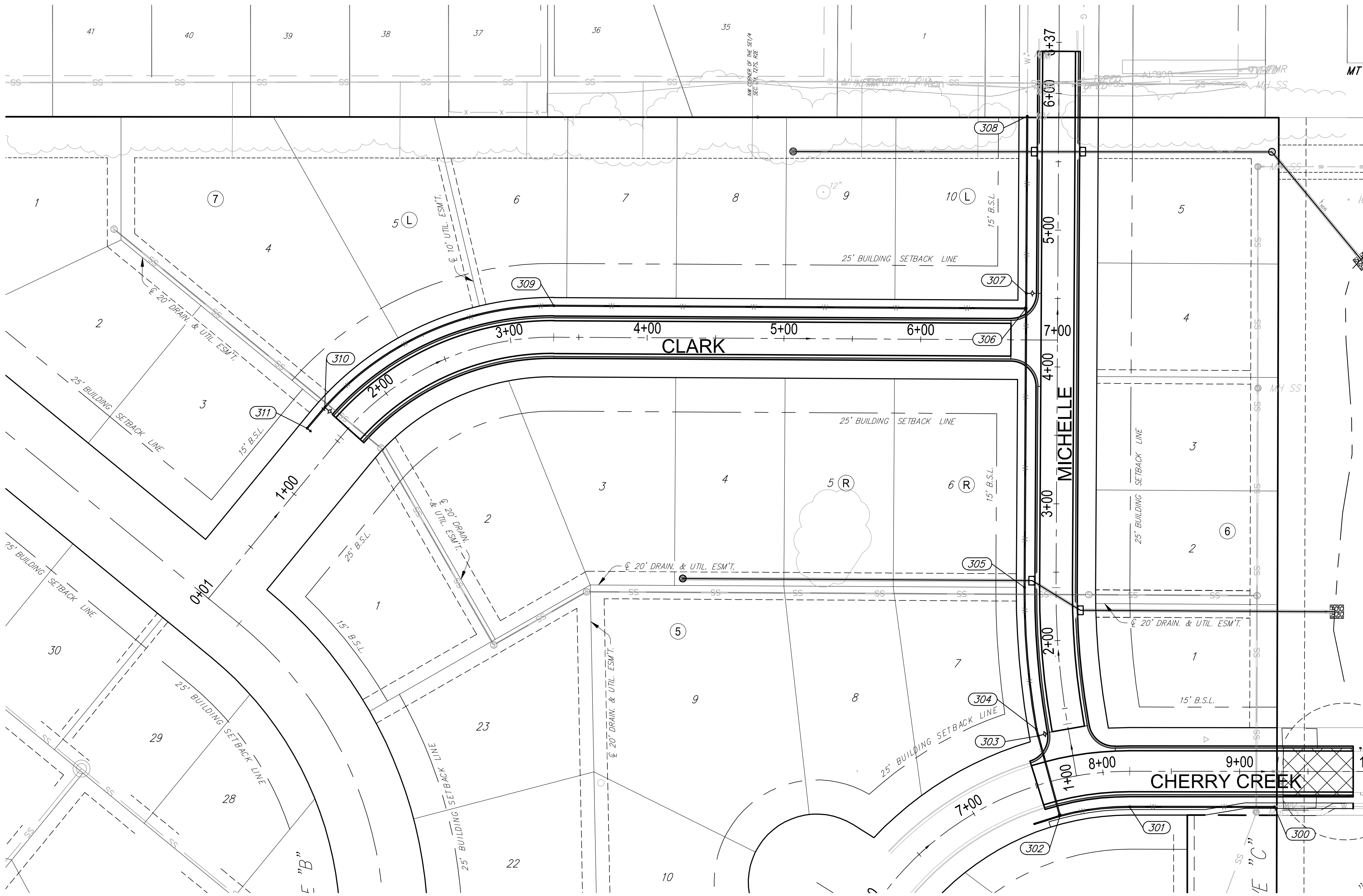


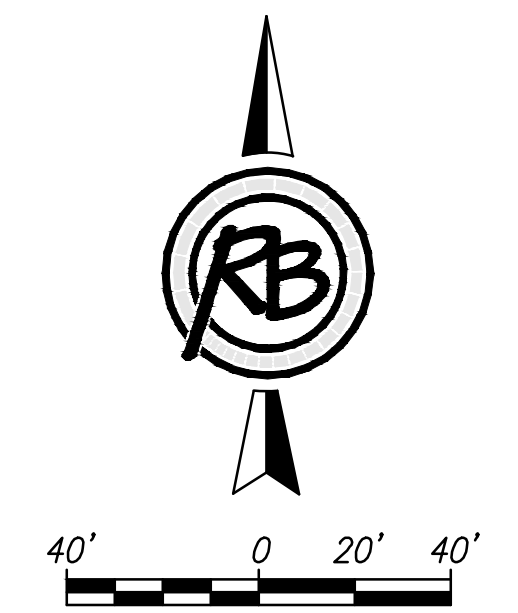
Tara Falls Addition

Tara Falls 3rd Addition

Tara Creek Addition



Point Table			
Point #	Northing	Easting	Description
300	22157.21	21330.43	CONNECT TO EXIST.
301	22157.32	21224.50	PC CURVE 1
302	22150.75	21173.58	TEE
303	22209.19	21157.66	FH
304	22214.01	21156.34	DEFLECTION/PC CURVE 2
305	22317.71	21147.66	PT CURVE 2
306	22521.71	21148.83	TEE
307	22532.71	21148.90	FH
308	22662.14	21149.64	CONNECT TO EXIST.
309	22523.68	20803.44	PC CURVE 3
310	22449.37	20635.97	FH/PT CURVE 3
311	22434.09	20623.06	BLOWOFF



Casa Bella 2nd Addition

F:\Projects\Projects 4700-4799\4796E (Casa Bella Phase 4 Engineering)\4796E Coordinates-Bubble Maps.dwg

(c) Copyright 2015, Ruggles & Bohm, P.A.

Casa Bella 2nd - Phase 4 Water-Bubble Map	
	RUGGLES & BOHM <small>ENGINEERING SURVEYING LANDSCAPE ARCHITECTURE GOVERNMENT</small> <small>924 NORTH MAIN WICHITA, KANSAS 67203 P (316) 264-8008 F (316) 264-4621 WWW.RBANDBOHM.COM</small>
	<small>DATE</small> 3/14/2017 <small>DESIGN</small> KWL <small>DRAWN</small> DRS <small>REVIEW</small> 2-9-2016 <small>SHEET</small> 11 <small>OF</small> 13
<small>PROJECT NUMBER</small> 448-90782 <small>DRAWING FILE</small> 4796E	<small>DIWG. SCALE</small> ... <small>4796E Coordinates-Bubble Maps [Water-Bubble Map]</small>