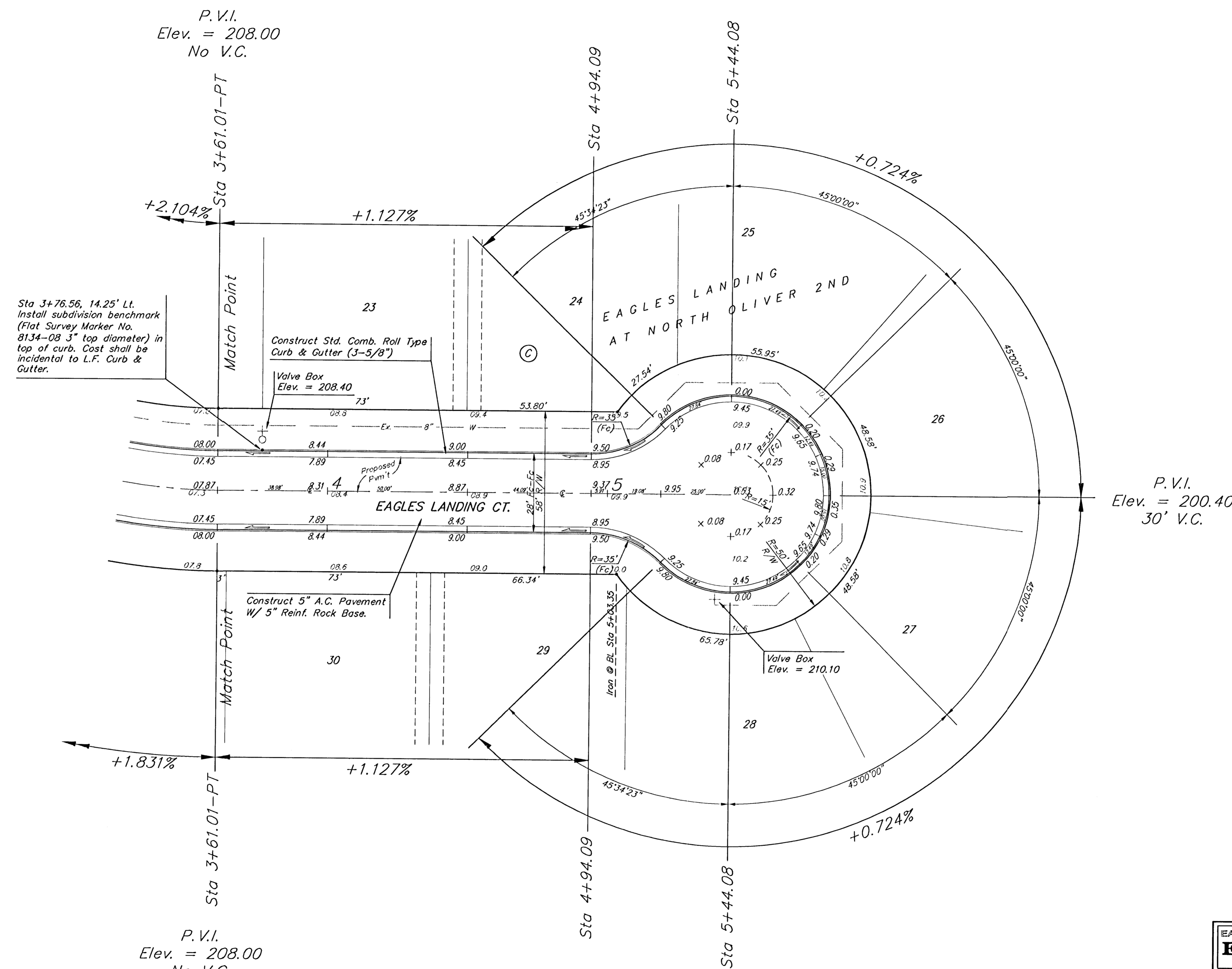
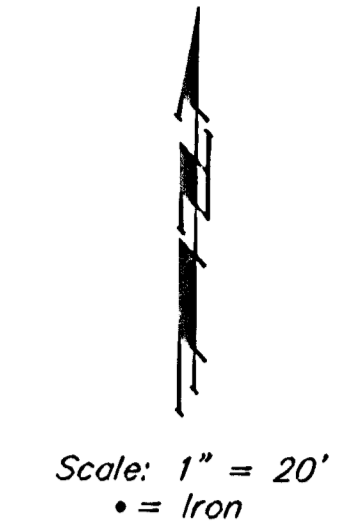


BENCHMARKS:
 Oliver and 45th St. N. - Top of
 Brass Plate on SW Corner of
 R.C.B.C. East of Intersection.
 ELEV. = 1398.88 NGVD
 (211.48 City Datum)

60d Nail In H.L.P., 33' S. of the
 NW Corner of Gov't. Lot 1 in the
 NE1/4 of Sec. 26, TWP. 26-S,
 R-1-E of the 6th P.M. Elev. =
 1377.19 NGVD
 (189.79 City Datum)



NOTE: ROLL TYPE CURB & GUTTER TO BE CONSTRUCTED ON THE PAVEMENT SHOWN ON THIS SHEET. TOP OF CURB ELEVATIONS ARE GIVEN FOR FULL HEIGHT CURB.

P.V.I.
 Elev. = 208.00
 No V.C.

P.V.I.
 Elev. = 200.40
 30' V.C.

P.V.I.
 Elev. = 208.00
 No V.C.

EAGLES LANDING AT NORTH OLIVER 2ND ADDITION - PH. II				
EAGLES LANDING CT.				
STA 3+81.01 TO STA 5+44.08				
BAUGHMAN COMPANY P.A.				
ENGINEERING, SURVEYING, & PLANNING				
316-262-7271 • 315 ELLIS • WICHITA, KANSAS 67211				
PROJECT NUMBER 472-63485				SHEET 13
DESIGN NBW	DRAWN TMS	APPROVED	DATE 03/03	SCALE Noted 40