

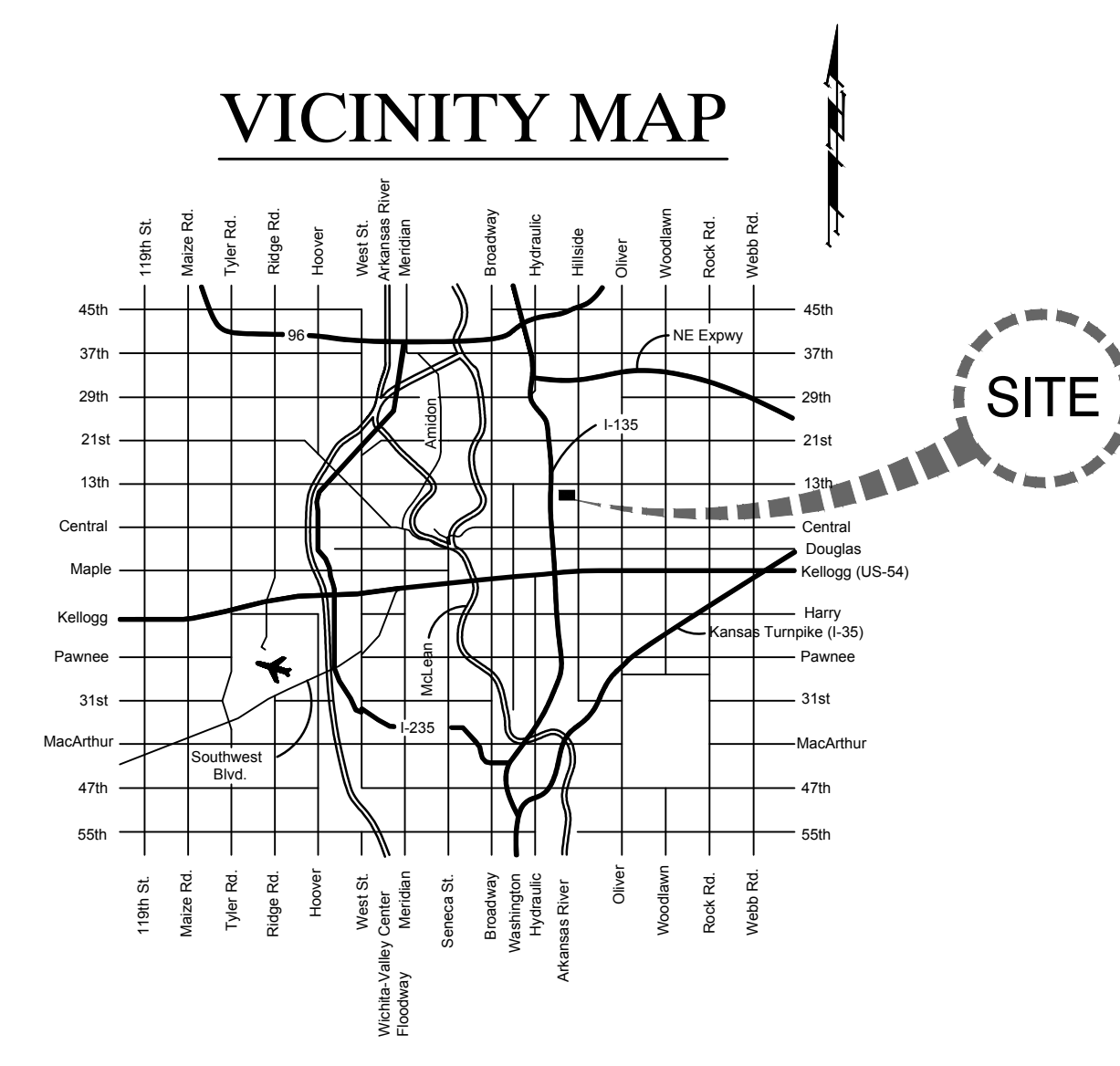
PAVING PROJECT

10th STREET NORTH

GREEN to ESTELLE

Index

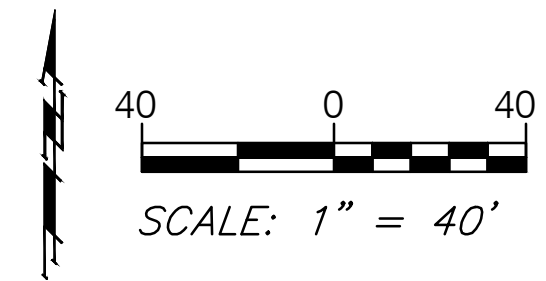
1	Title Sheet
2	Notepage
3-5	Paving Details
6	10th Street North Paving Plan
7	10th Street North Joint Plan
8	Valley Gutter Details
9	Ring & Cover Details
10-14	Erosion Control Details
15	Cross Sections



FOR
**THE CITY OF WICHITA,
 SEDGWICK COUNTY, KANSAS**
 Gary Janzen, P.E., City Engineer

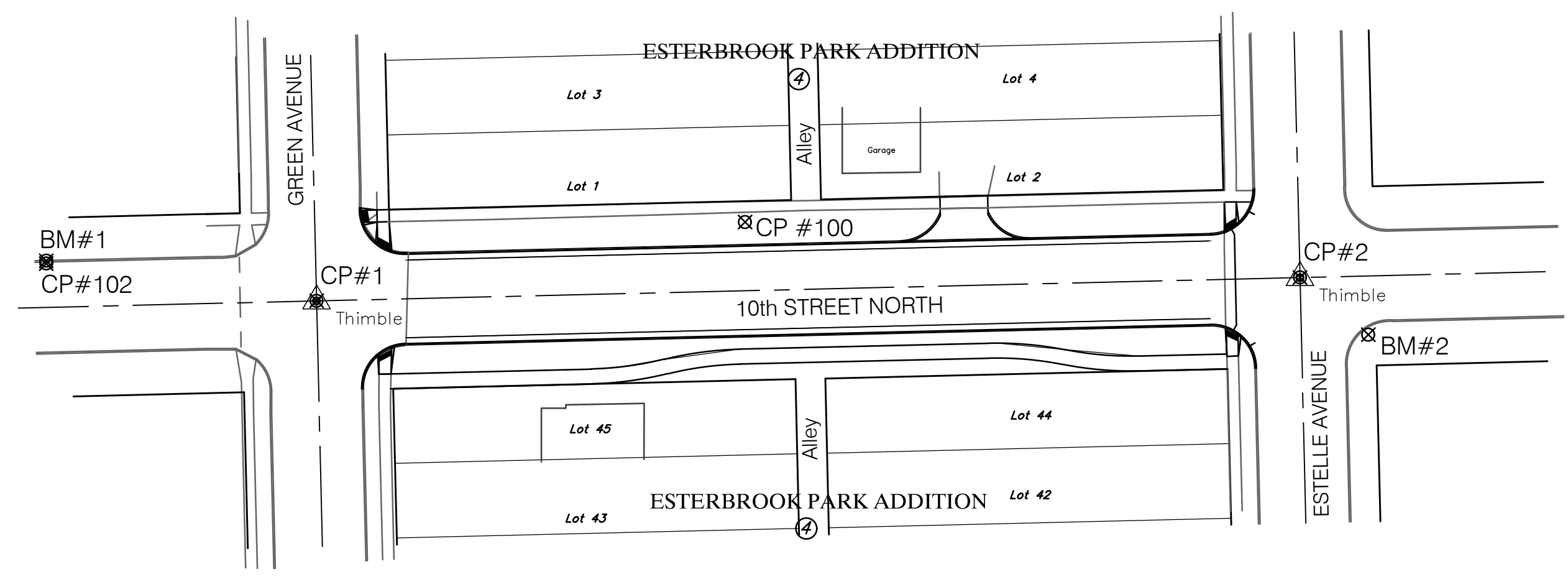
City Project No. - 472-85298
 O.C.A. No. - 092600

January 2017



BENCHMARKS:

- BM #1 - Chiseled "C" on the Top of Curb on the North Side 10th Street North 90' West of the Centerline of Green.
Elev. = 1311.66 (NAVD 88)
- BM #2 - 60d Nail in the West face of the Light Pole in the Southwest Corner of 10th Street North and Estelle.
Elev. = 1315.40 (NAVD 88)



There is no Benefit District for this Project

CONTROL POINTS:

- CP #100 - #4 Rebar w/ Orange Cap
N-1691827.81
E-1657933.40
- CP #102 - 60d Nail w/ Cap
N-1691813.90
E-1657699.17
- CP #1 - 3/8" Iron in Thimble
N-1691801.40
E-1657789.79
BL Sta. 10+00.00
- CP #2 - Thimble w/ 1/2" Iron
N-1691809.23
E-1658119.41
BL Sta. 13+29.72

