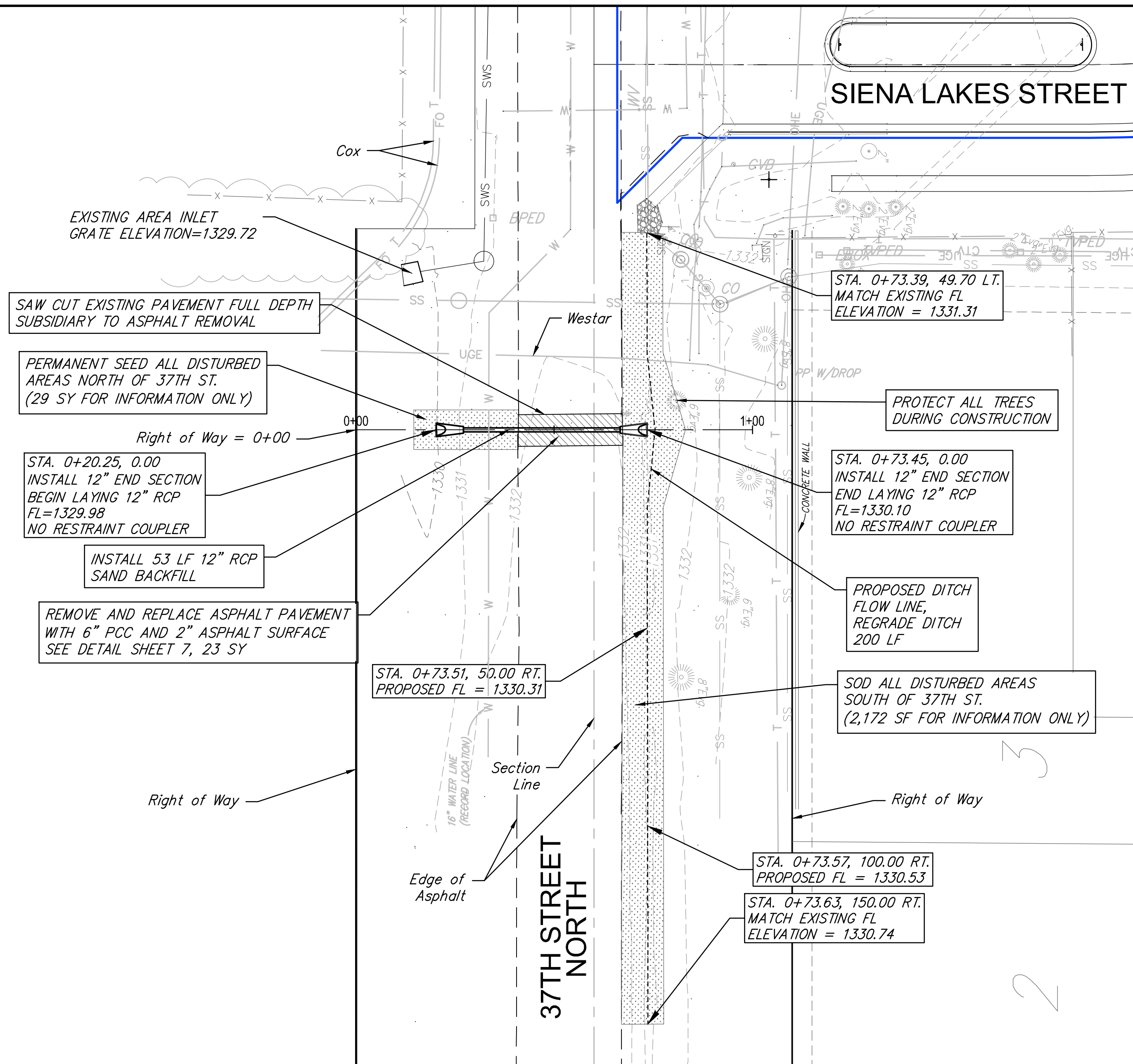
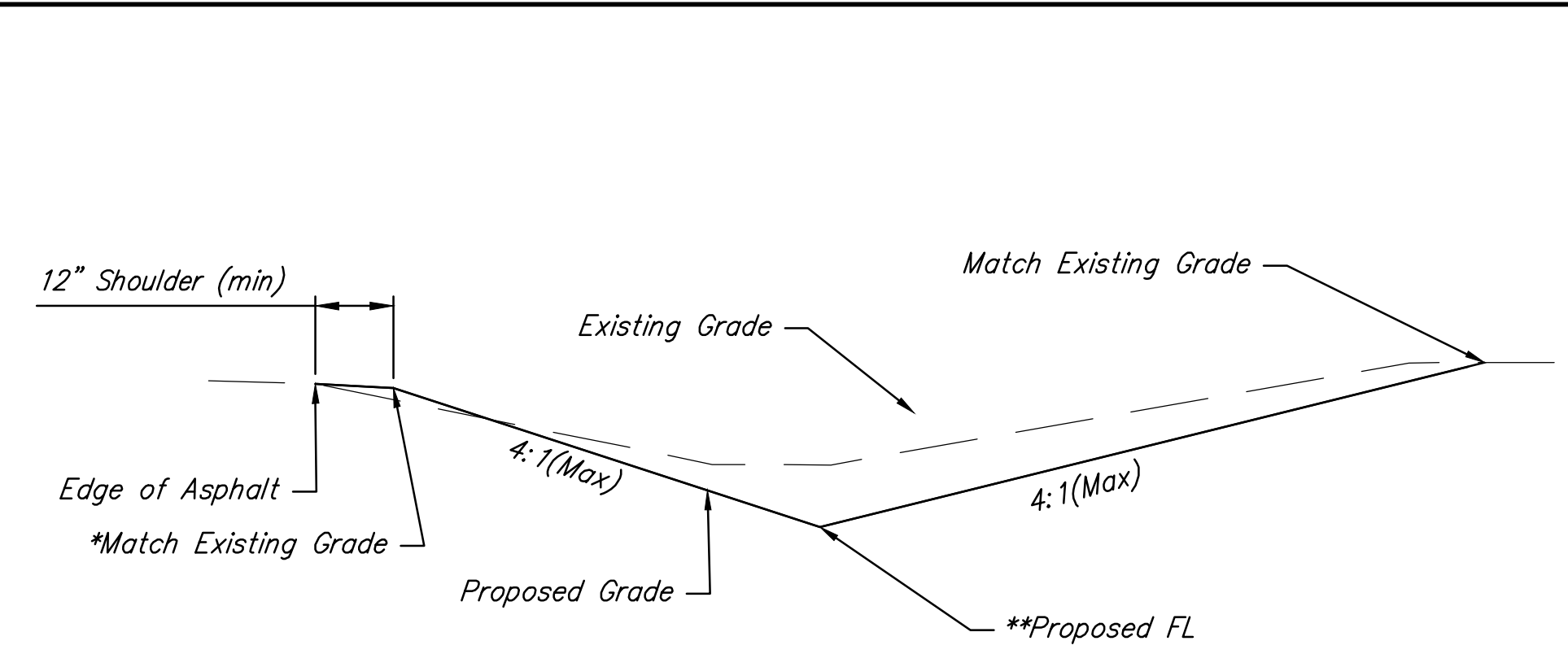
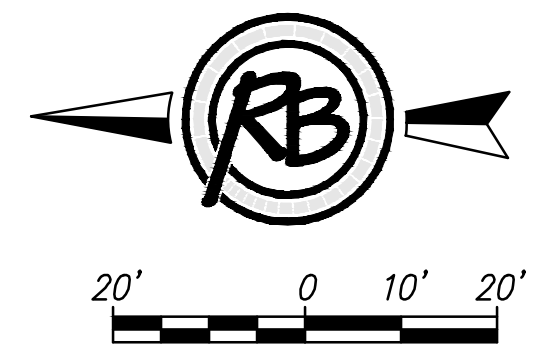


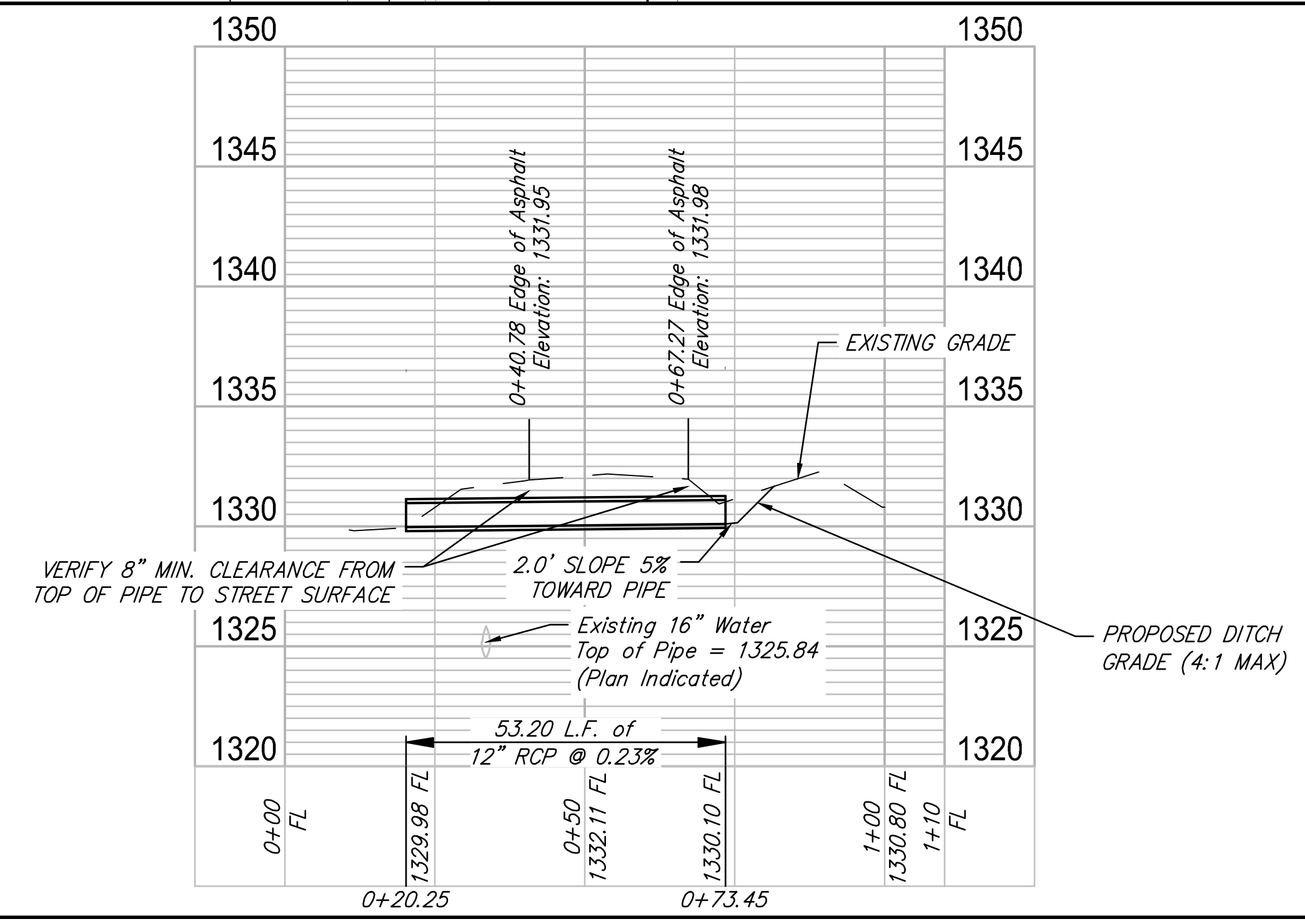
F:\Projects\Projects 4800-4899\4854D Siena Lakes & Ridge Road Drainage\4854D Siena Lakes Eng Base.dwg



- Notes
1. Contractor to protect all existing utilities during construction.
 2. Contractor may close 37th Street during construction and detour traffic to 29th Street. Contractor responsible for traffic control plan. Access must be maintained to all properties during construction.
 3. Contractor to protect all signs during construction.
 4. Contractor to protect all trees during construction.
 5. Contractor to restore surface to existing conditions unless otherwise called for in plans, including but not limited to seeding, sod, rip rap, etc.
 6. Grading around end sections to be 4:1 maximum slope.
 7. Contractor to verify 8" vertical clearance between top of 12" RCP and top of 37th Street surface.
 8. All excess material from excavation and grading to be hauled away at contractors expense. Subsidiary to 12" RCP and Regrade Ditch.
 9. No excavation material to be stockpiled in the north right of way. Contractor shall keep disturbed areas to a minimum.
 10. Irrigation lines are in the vicinity of the project. Contractor needs to verify working condition of irrigation system with owner or owner's representative prior to performing work. Contractor is responsible to restore irrigation to existing condition and repair any damages caused by contractor. Contractor is NOT responsible for improvements or adjustments to the existing system.



TYPICAL DITCH SECTION ALONG SOUTH SIDE OF 37TH ST.
 *Match to edge of asphalt if necessary but maintain 12" rock shoulder
 **Ditch FL elevation and location to be as shown on plan view. Ditch FL may gradually jog up to 2' south of 12" RCP end section to allow for grading around end section.
 Estimated Cut=19 CY, Estimated Fill=1 CY, Estimated Net 18 CY of Excess Material (For informational purposes only)



	REVIEW	EG
	DATE	3-23-2017
DESIGN	MTD	DRAWN
PROJECT NUMBER	468-90804	DRAWING FILE
4854D Siena Lakes Eng Base		
37th St. N. Drainage Improvements 37th Street Culvert Wichita, Kansas		
RB JOB	4854D	
SHEET	2	7

