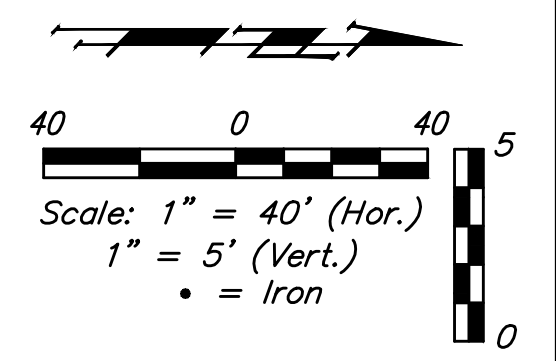
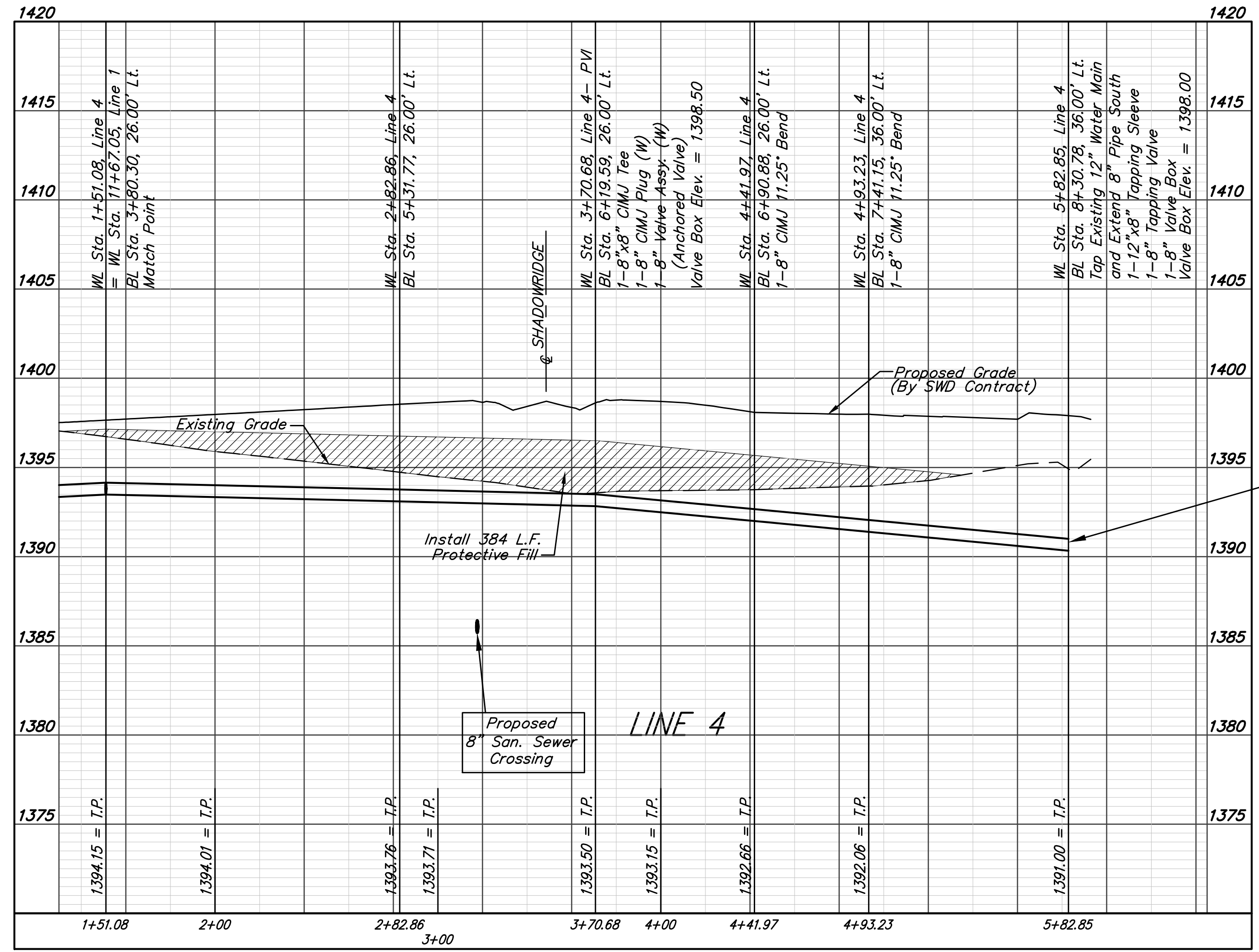
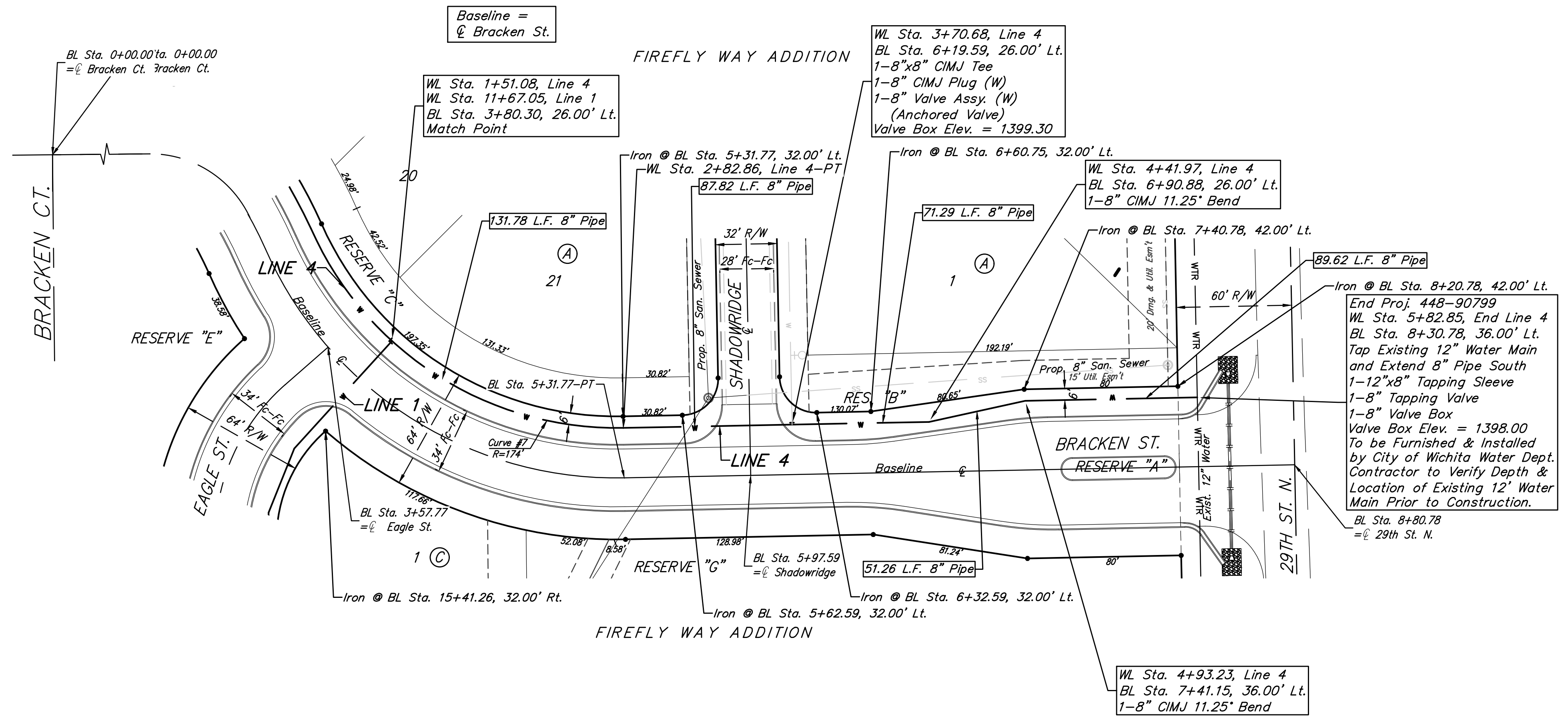


BENCHMARKS:
BM#1: Disc on Top of Curb
 South side of 27th St. N. and
 West of 27th Ct. N. Woods
 North 3rd Addition
 Elev. = 1397.69 NAVD88
BM#2: Northwest 1/4 Corner,
 Government Lot 2, Sec. 3,
 TWP. 27-S, R-2-E
 Elev. = 1405.78 NAVD88



Curve #7
 Curve Data Based on Centerline of Pipe
 Rad. = 174' Delta = 67°18'17" Tangent = 115.83'
 Arc = 131.78' L.C. = 192.85' Def./Pt. = 15.32206 Min.

Station	Arc	Chord	Defl.	Total Defl.
1+50.91	-	-	0°00'00"	0°00'00"
1+75.00	24.09'	31.93'	6°09'07"	6°09'07"
2+00.00	25.00'	33.14'	6°23'03"	12°32'10"
2+25.00	25.00'	33.14'	6°23'03"	18°55'13"
2+50.00	25.00'	33.14'	6°23'03"	25°18'16"
2+75.00	25.00'	33.14'	6°23'03"	31°41'19"
2+82.69	7.69'	10.21'	15°7'50"	33°39'09"



Contractor to verify depth and location of existing main prior to construction.



Baughman Firefly Way Addition Phase I
LINE 4
 Water Distribution System

Baughman Company, P.A. 315 Ellis St. Wichita, KS 67211 P 316-262-7271 F 316-262-0149
 ENGINEERING | SURVEYING | PLANNING | LANDSCAPE ARCHITECTURE

PROJECT NUMBER 468	DESIGN AEG	DRAWN DJL
REVISIONS:	APPROVED	DATE 2/17
	SCALE Noted	SHEET 9 OF 18

E:\Projects\Firefly Way-Richie_16-04-P195\Engineering\Phase I\WTR_16-12-E627\WTR Plans.dwg