

BENCHMARKS:

BM#1: Disc on Top of Curb South side of 27th St. N. and West of 27th Ct. N. Woods North 3rd Addition Elev. = 1397.69 NAVD88

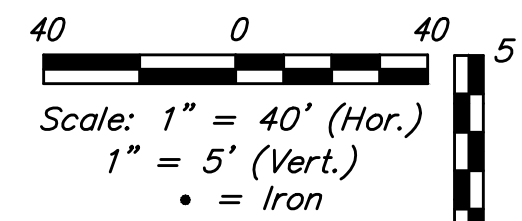
BM#2: Northwest 1/4 Corner, Government Lot 2, Sec. 3, TWP. 27-S, R-2-E Elev. = 1405.78 NAVD88

Begin Proj. 448-90793
 WL Sta. 0+00.00, Begin Line 1
 BL Sta. 1+60.00, 26.00' Lt.
 Remove Existing 2" Blowoff Valve and Extend 8" Water Line Pipe West.
 Contractor to Verify Depth & Location of Existing 8" Water Line Prior to Construction.
 Ex. Valve Box Elev. = 1398.80

Baseline = ϕ 27th St. N.
 WL Sta. 1+41.00, Line 1 = W.L. Sta. 0+00.00, Line 2
 BL Sta. 3+01.00, 26.00' Lt.
 1- 8"x8" CIMU Tee
 1- 8" Valve Assy. (S)
 (Gate Valve)
 Valve Box Elev. = 1401.00

EAGLE CT.

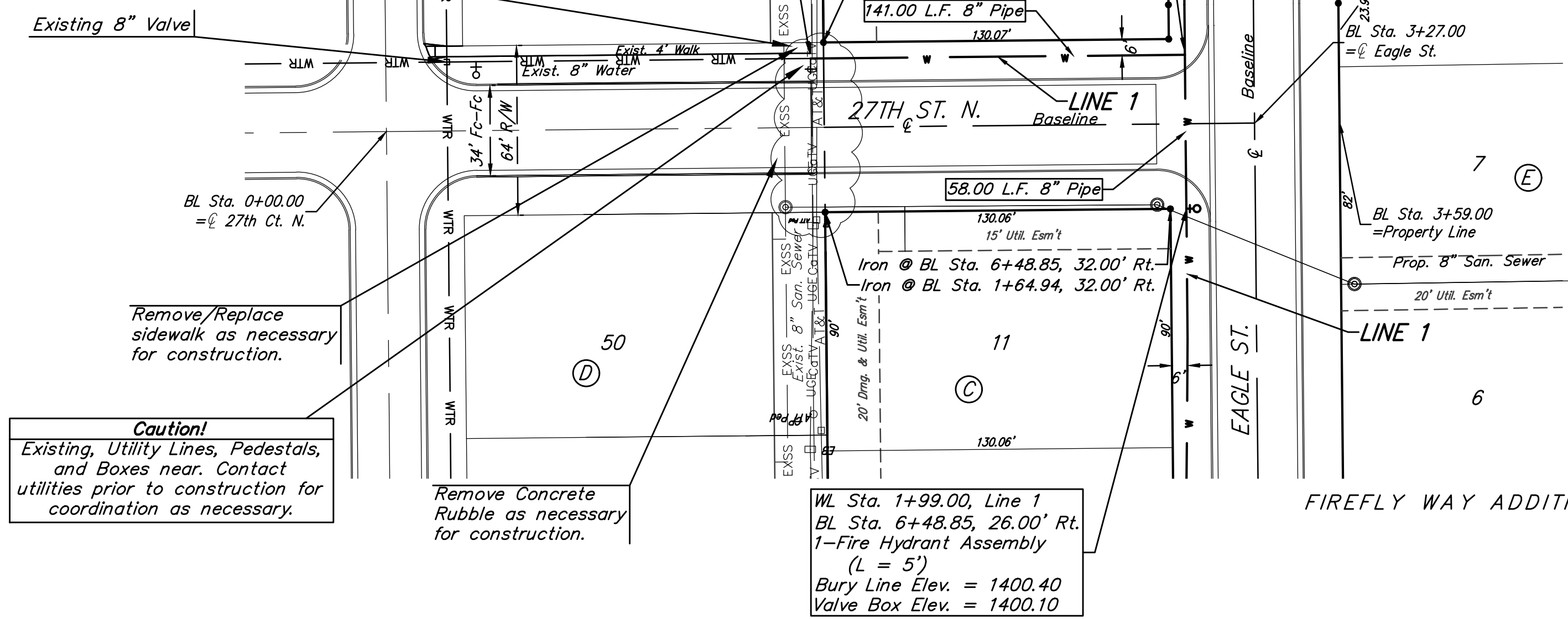
BL Sta. 0+00.00 = ϕ Eagle Ct



WOODS NORTH 3RD ADDITION

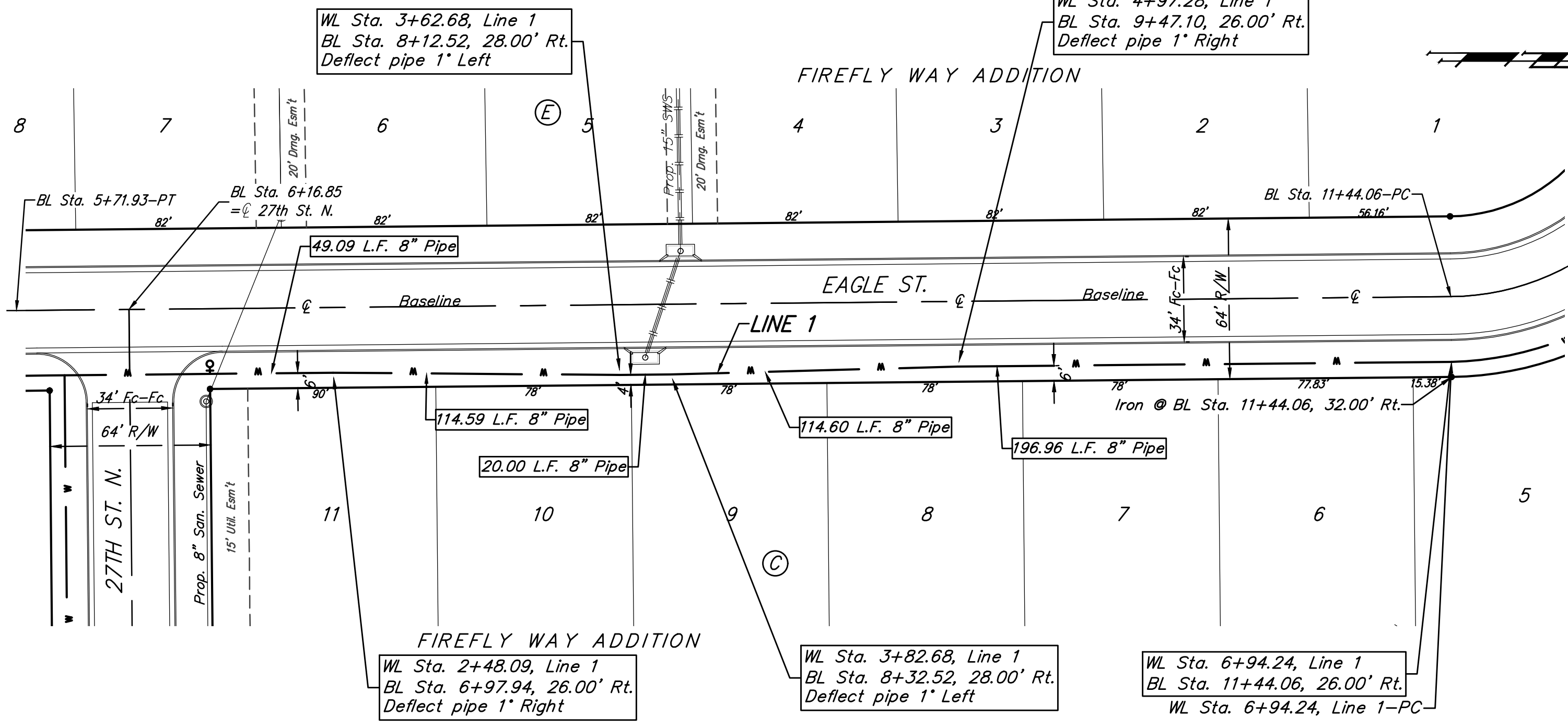
Replace Sprinklers/Sod Lot 21 and adjacent R/W as necessary.

Owner: Firethorne LLC
 8100 E 22nd St. N. Bldg. 10
 Wichita, KS 67226

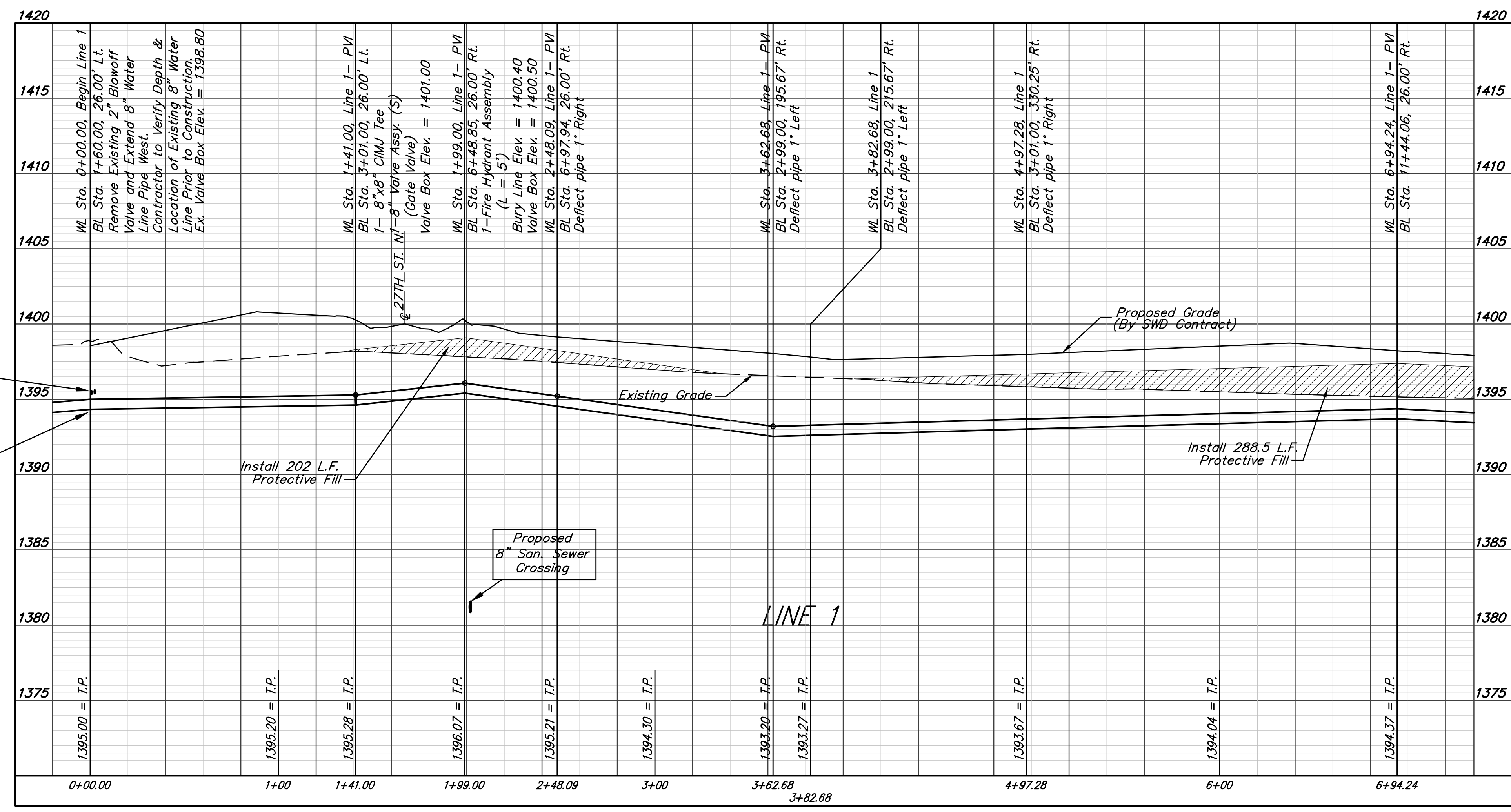


Caution!
 Existing, Utility Lines, Pedestals, and Boxes near. Contact utilities prior to construction for coordination as necessary.

Remove Concrete Rubble as necessary for construction.



Baseline = ϕ Eagle St.



FIRE HYDRANTS REQUIRED					
LINE	STATION	BURY LINE ELEVATION	TOP OF PIPE ELEVATION	FIRE HYDRANT BURY REQUIRED*	VALVE STEM EXT. REQUIRED (ft)*
1	1+99.00	1400.40	1396.07	5'	-



Baughman Firefly Way Addition Phase I
LINE 1
 Water Distribution System

Baughman Company, P.A. 315 Ellis St. Wichita, KS 67211 P 316-262-7271 F 316-262-0149
 ENGINEERING | SURVEYING | PLANNING | LANDSCAPE ARCHITECTURE

PROJECT NUMBER: 468-90793
 DESIGN: AEG
 DRAWN: DJL
 APPROVED: [Signature]
 DATE: 2/17
 SCALE: Noted
 SHEET: 4 OF 18