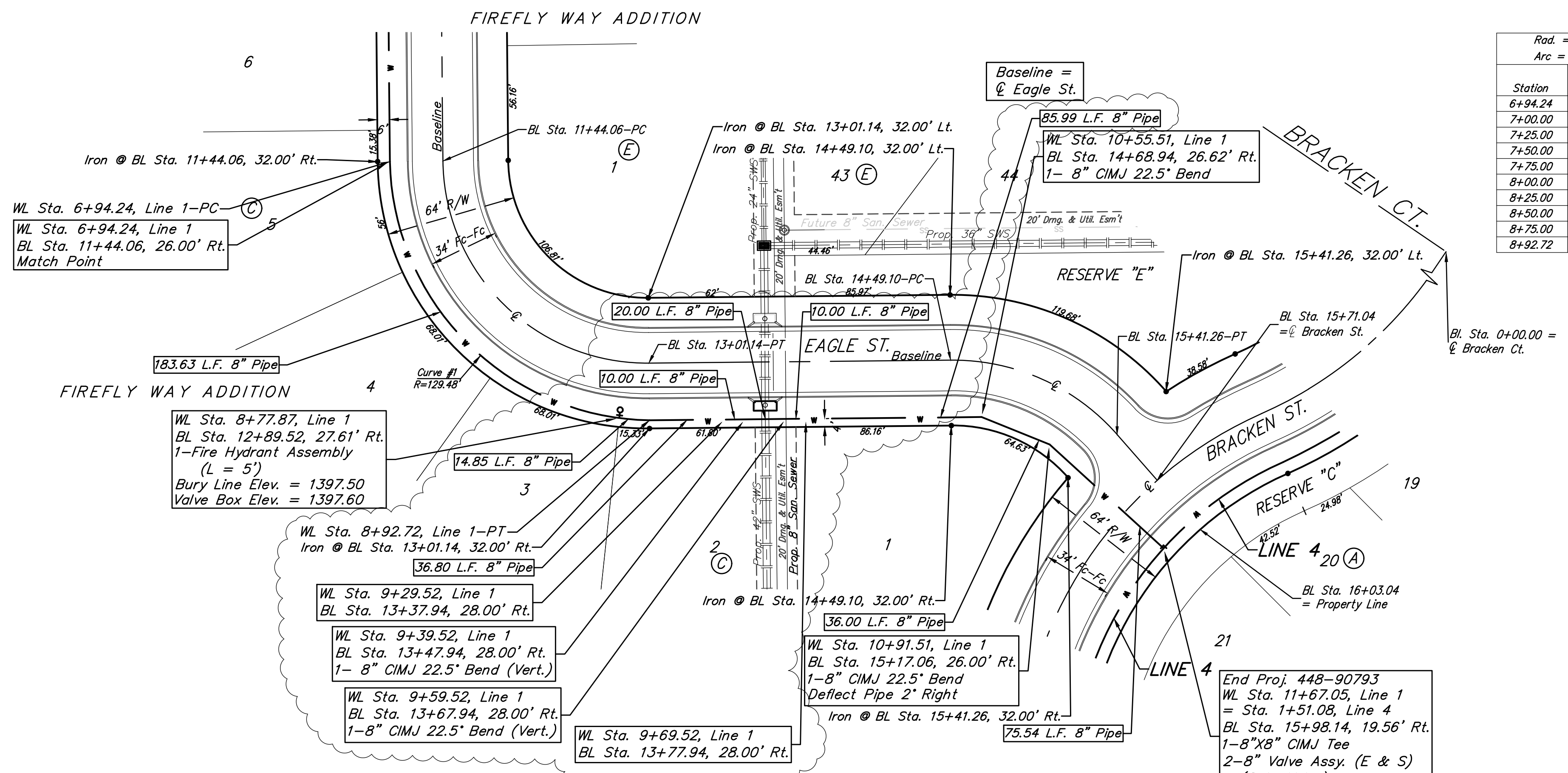
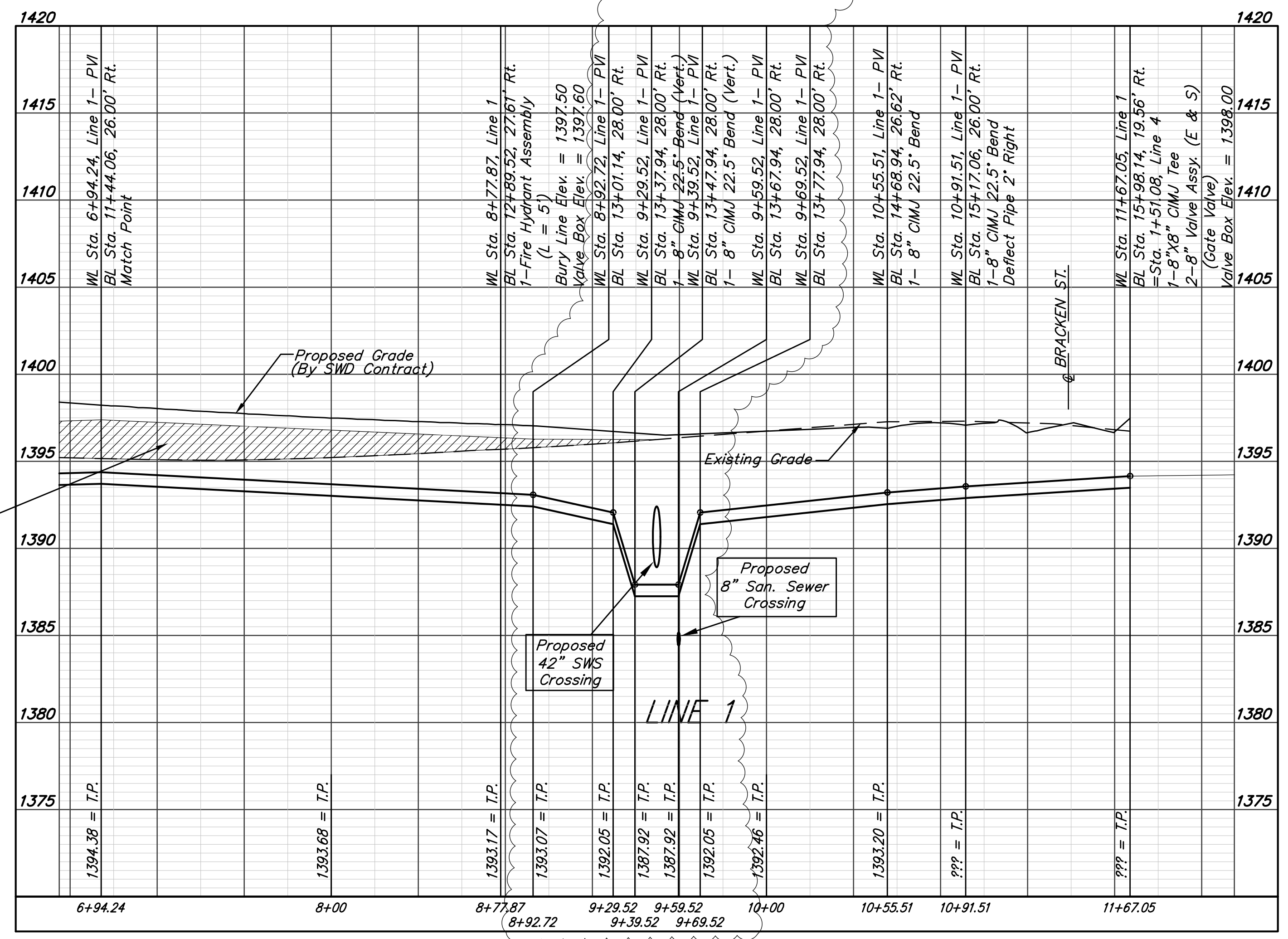
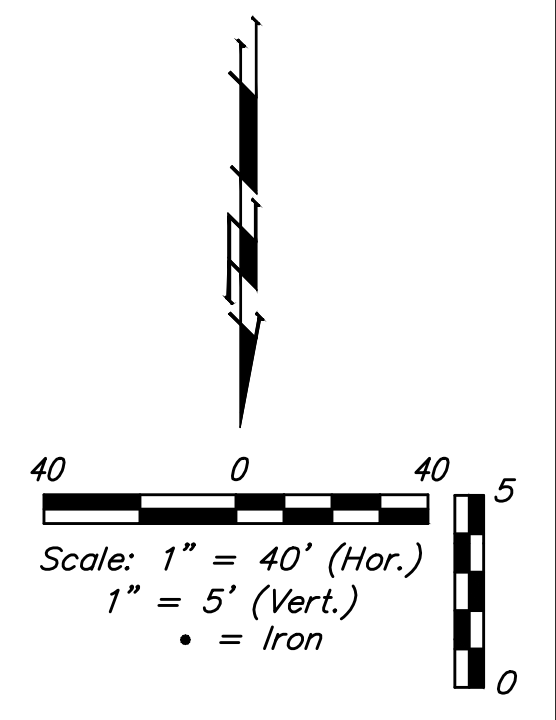


BENCHMARKS:
BM#1: Disc on Top of Curb South side of 27th St. N. and West of 27th Ct. N. Woods North 3rd Addition
 Elev. = 1397.69 NAVD88
BM#2: Northwest 1/4 Corner, Government Lot 2, Sec. 3, TWP. 27-S, R-2-E
 Elev. = 1405.78 NAVD88



Curve #1
 Curve Data Based on Centerline of Pipe
 Rad. = 128.48' Delta = 87°49'19" Tangent = 123.69'
 Arc = 198.48' L.C. = 178.22' Def./Ft. = 13.27418 Min.

Station	Arc	Chord 8' Right	Defl.	Total Defl.
6+94.24	-	-	0°00'00"	0°00'00"
7+00.00	5.76'	6.83'	1°16'28"	1°16'28"
7+25.00	25.00'	29.59'	5°31'51"	6°48'19"
7+50.00	25.00'	29.59'	5°31'51"	12°20'10"
7+75.00	25.00'	29.59'	5°31'51"	17°52'01"
8+00.00	25.00'	29.59'	5°31'52"	23°23'53"
8+25.00	25.00'	29.59'	5°31'51"	28°55'44"
8+50.00	25.00'	29.59'	5°31'51"	34°27'35"
8+75.00	25.00'	29.59'	5°31'51"	39°59'26"
8+92.72	17.72'	20.99'	3°55'13"	43°54'39"



FIRE HYDRANTS REQUIRED

LINE	STATION	BURY LINE ELEVATION	TOP OF PIPE ELEVATION	FIRE HYDRANT BURY REQUIRED*	VALVE STEM EXT. REQUIRED (ft)*
1	8+77.87	1397.50	1393.17	5'	-



Baughman Firefly Way Addition Phase I
LINE 1
 Water Distribution System

Baughman Company, P.A. 315 Ellis St. Wichita, KS 67211 P 316-262-7271 F 316-262-0149
 ENGINEERING | SURVEYING | PLANNING | LANDSCAPE ARCHITECTURE

PROJECT NUMBER: 468-90793
 DESIGN: AEG
 DRAWN: DJL

REVISIONS: 4/18/17 DJL
 APPROVED: DATE 2/17
 Water Line Elevations updated for SWS Page

SCALE: Noted
 SHEET: **5 OF 18**

E:\Projects\Firefly Way-Ritchie_1604P195\Engineering\Phase I\WTR_16-12-16-21\WTR Plans.dwg