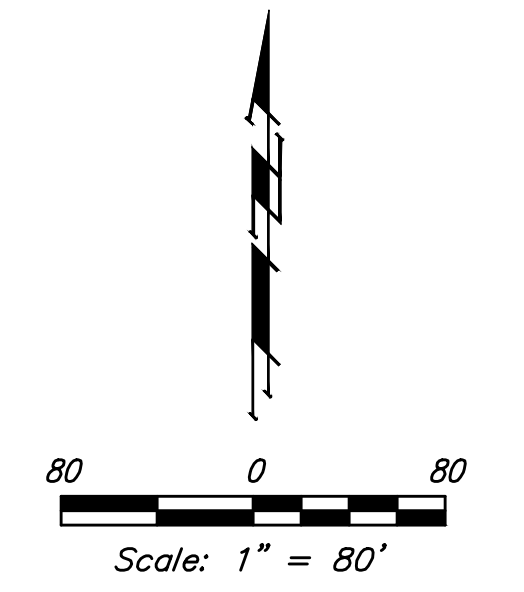
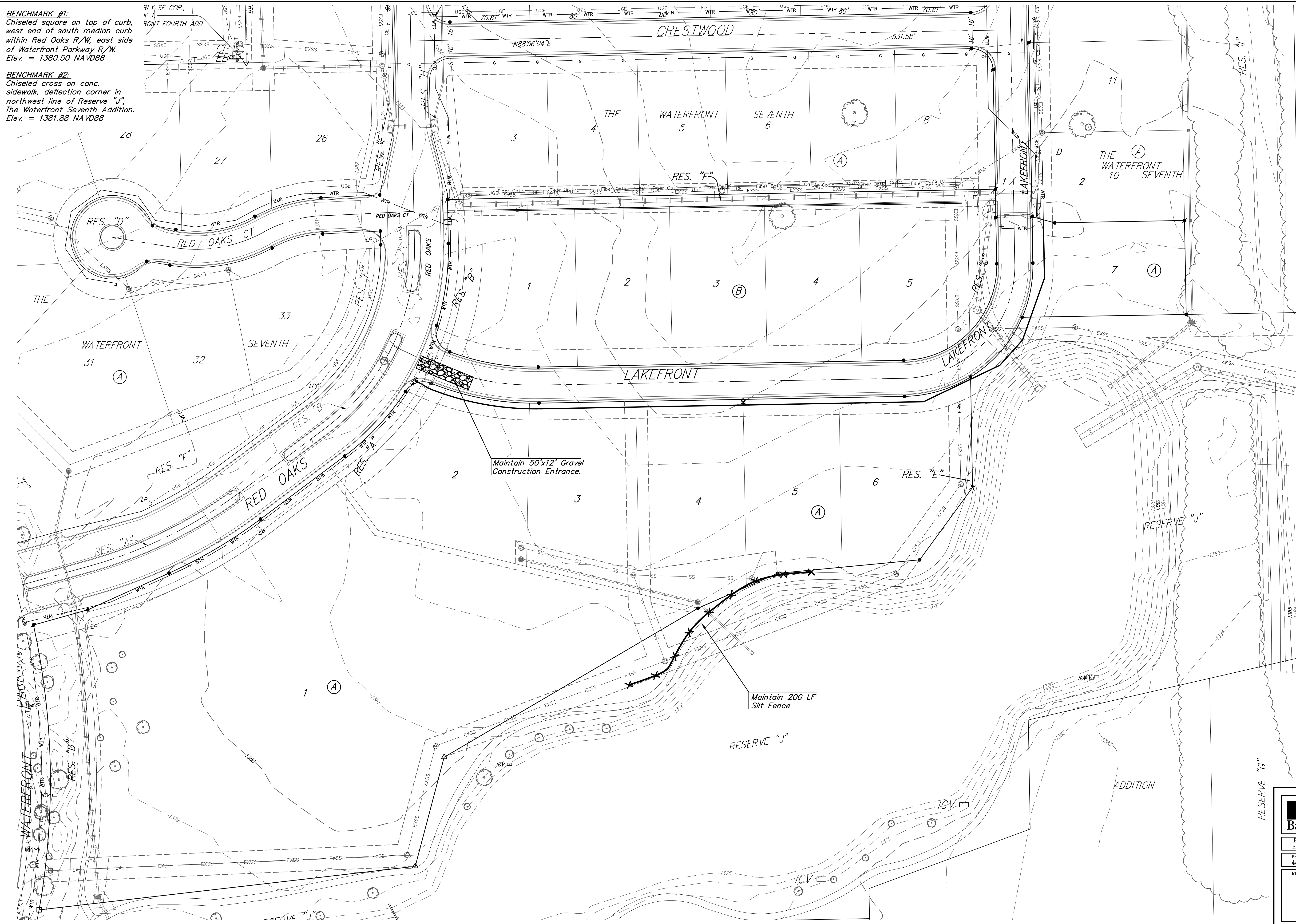


BENCHMARK #1:
Chiseled square on top of curb, west end of south median curb within Red Oaks R/W, east side of Waterfront Parkway R/W. Elev. = 1380.50 NAVD88

BENCHMARK #2:
Chiseled cross on conc. sidewalk, deflection corner in northwest line of Reserve "J". The Waterfront Seventh Addition. Elev. = 1381.88 NAVD88



Existing Ground ——— 1364 ———
Silt Fencing ——— X ——— X ———

NOTES:
Contractor shall make sure all erosion control is in place before project is accepted. This plan represents the minimum standard. Any additional erosion control measures shall be installed by the Contractor as needed.
All areas disturbed during construction shall be seeded, mulched, and fertilized as per Cover Sheet General Notes.

Maintain 50'x12' Gravel Construction Entrance.

Maintain 200 LF Silt Fence



	The Waterfront 9th Addition	
	EROSION CONTROL	
Water Distribution System		
<small>Baughman Company, P.A. 315 Ellis St. Wichita, KS 67211 P 316-262-7271 F 316-262-0149 ENGINEERING SURVEYING PLANNING LANDSCAPE ARCHITECTURE</small>		
PROJECT NUMBER 448-90806	DESIGN AEG	DRAWN JAK
REVISIONS:	APPROVED	DATE 4/04/17
	SCALE Noted	SHEET
5 OF 12		