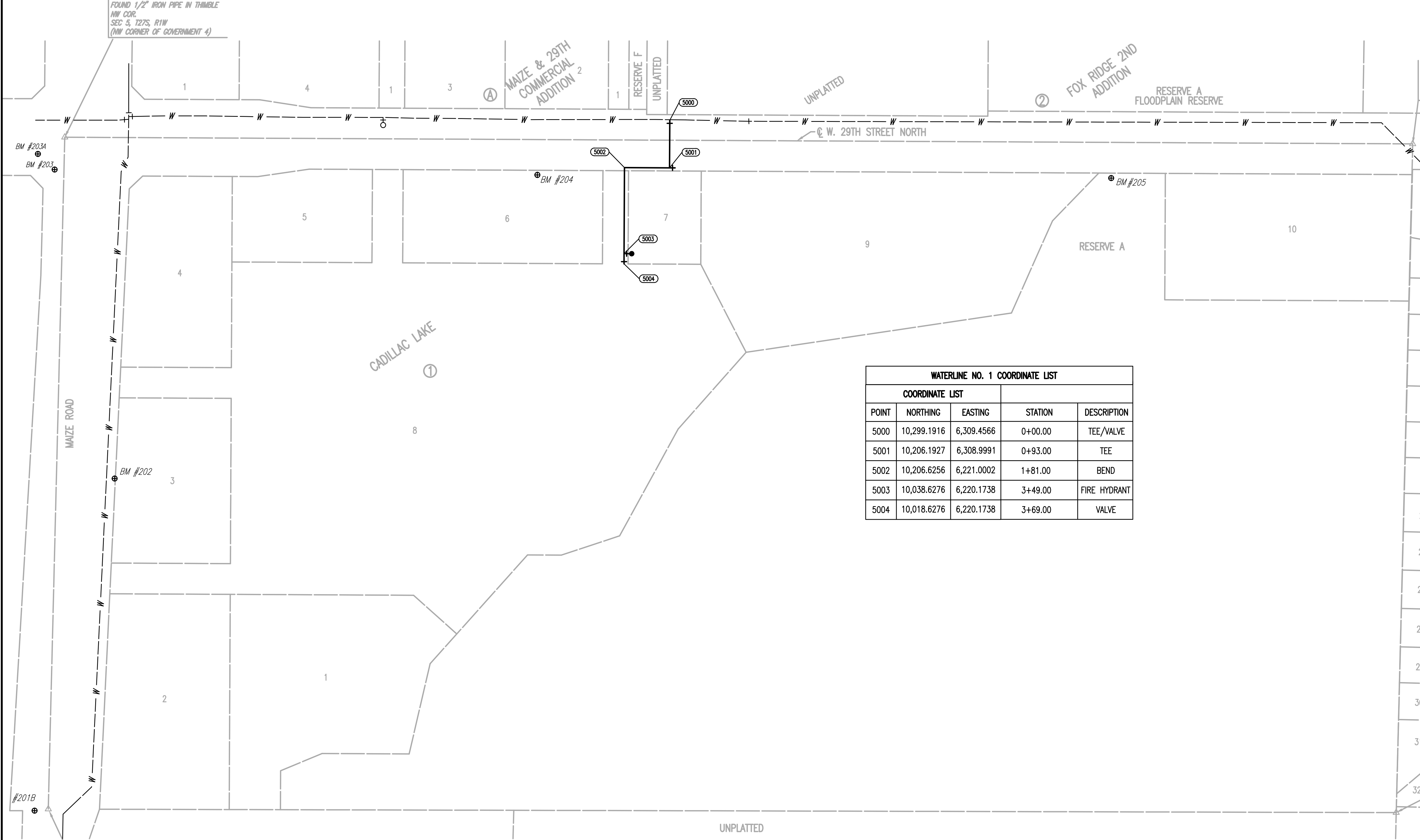


SCALE: 1" = 100'



WATERLINE NO. 1 COORDINATE LIST				
COORDINATE LIST				
POINT	NORTHING	EASTING	STATION	DESCRIPTION
5000	10,299.1916	6,309.4566	0+00.00	TEE/VALVE
5001	10,206.1927	6,308.9991	0+93.00	TEE
5002	10,206.6256	6,221.0002	1+81.00	BEND
5003	10,038.6276	6,220.1738	3+49.00	FIRE HYDRANT
5004	10,018.6276	6,220.1738	3+69.00	VALVE

BENCH MARK LIST

- BM #201** - CHISELED SQUARE AT SOUTH END OF WEST CURB FOR MAIZE ROAD, NORTH OF DRIVE ENTRANCE TO NORTHEAST CORNER OF TARGET PARKING LOT, AND WEST OF SOUTHWEST CORNER OF GOVERNMENT LOT 4, SEC 5-27-1W. ELEV.=1352.57 (NAVD88)
- BM #202** - CHISELED "X" ON NORTH RIM OF TELEPHONE MANHOLE AT PVC TELEPHONE MARKER POST, 35 FEET SOUTH OF POWER POLE #62115, ON EAST SIDE OF ASPHALT BIKE PATH ON EAST SIDE OF MAIZE ROAD, 4 POLES NORTH OF TARGET, 3 POLES SOUTH OF 29TH STREET NORTH. ELEV.= 1350.53 (NAVD88)
- BM #203** - CHISELED SQUARE AT SOUTHWEST CORNER OF SOUTH HEADWALL FOR RCBC UNDER 29TH STREET, WEST OF MAIZE MAIZE ROAD (NOT THE CHISELED + AT THE SOUTHWEST CORNER OF SAME HEADWALL). ELEV.= 1353.32 (NAVD88)
- BM #203A** - CHISELED SQUARE ON TOP OF CURB INLET WEST SOUTHWEST OF 29H STREET AND MAIZE ROAD (DOES NOT INCLUDE ROUND PLASTIC DISK GLUED OVER PART OF SQUARE). ELEV.= 1351.98 (NAVD88)
- BM #204** - CHISELED SQUARE ON TOP OF RETAINING WALL AT SOUTHWEST CORNER OF CONCRETE PAD FOR ELECTRIC TRANSFORMER #10105 ON SOUTH SIDE OF 29TH STREET AND 800 FEET EAST OF BIKE PATH ON EAST SIDE OF MAIZE ROAD. ELEV.= 1352.01 (NAVD88)
- BM #205** - CHISELED SQUARE ON HIGH POINT OF EAST WINGWALL AT SOUTH END OF RCBC UNDER 29TH STREET, 600 FEET WEST OF NORTH 1/4 CORNER SECTION 5-27-1W, FOR POND GOING SOUTH. ELEV.= 1350.99 (NAVD88)
- BM #206** - CHISELED SQUARE ON NORTH EDGE OF CURVY SIDEWALK AT FIRE HYDRANT ON SOUTH SIDE OF 29TH STREET, 1/2 MILE EAST OF MAIZE ROAD, SOUTHWEST OF N 1/4 CORNER SEC 5-27-1W. ELEV.= 1350.92 (NAVD88)

Sowed 04-28-2016 3:36:35 PM by: CSL
 Plot Scale 1:25000 04-28-2016 3:38:15 PM by: CAIRL LINK
 U:\Wichita-Civil\2015\15138\002\Main\Drawings\15138-002-C04-WATERLINE BUBBLE MAP

No.	Revision	By	Date
	CADILLAC LAKE - PHASE 1 (PART A) WATERLINE IMPROVEMENTS		
	WATERLINE BUBBLE MAP		
	GARY JANZEN, P.E. - CITY ENGINEER CITY OF WICHITA PROJECT NO. 448-90686		
	PROFESSIONAL ENGINEERING CONSULTANTS, P.A. 303 SOUTH TOPEKA WICHITA, KS 67202 316-262-2691 www.pec1.com		
Designed by	CSB, SAD	Job No.	35-15138-002
Drawn by	CSL	Date	JULY 2015

Sht. 4 of 10