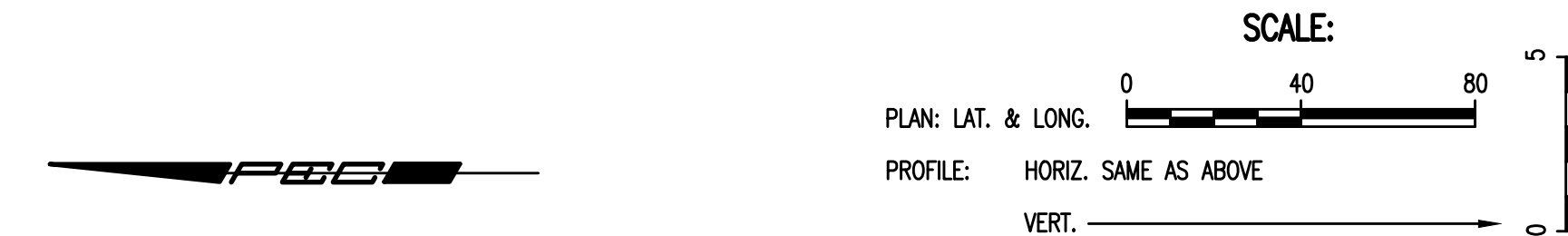
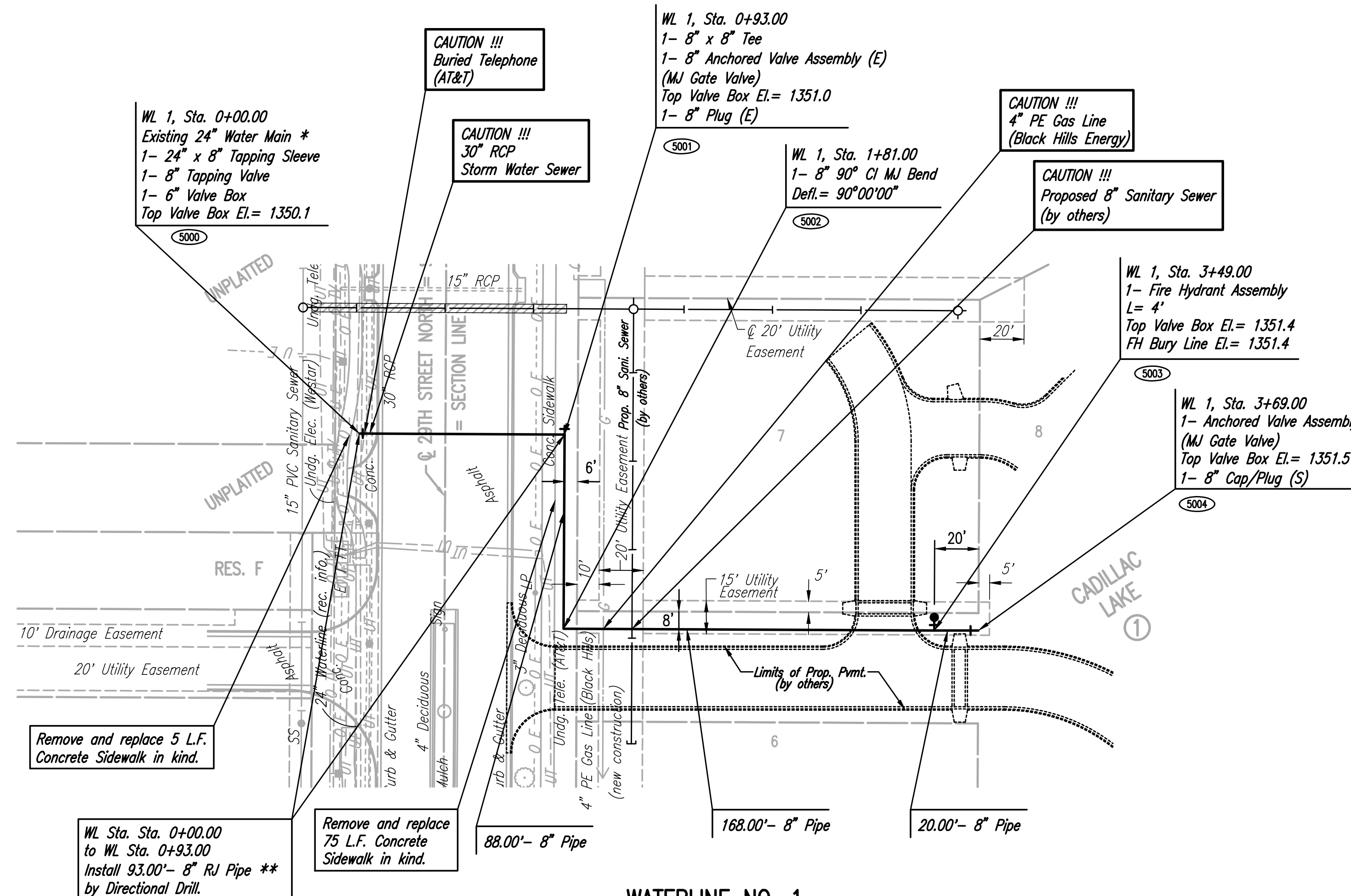


PLAN	CHECKED	DATE
	CHECKED	

PROFILE	CHECKED	DATE
	CHECKED	

Saved: 05-02-2016 8:29:37 AM by CSI  
 Plot Scale: 12.5649 05-02-2016 8:29:56 AM by CATHY LINK  
 U:\Wichita-Civil\2015\15138\002\Mun\Drawings\15138-002-C05-WATERLINE NO 1

Unless noted otherwise, elevations shown are top of pipe



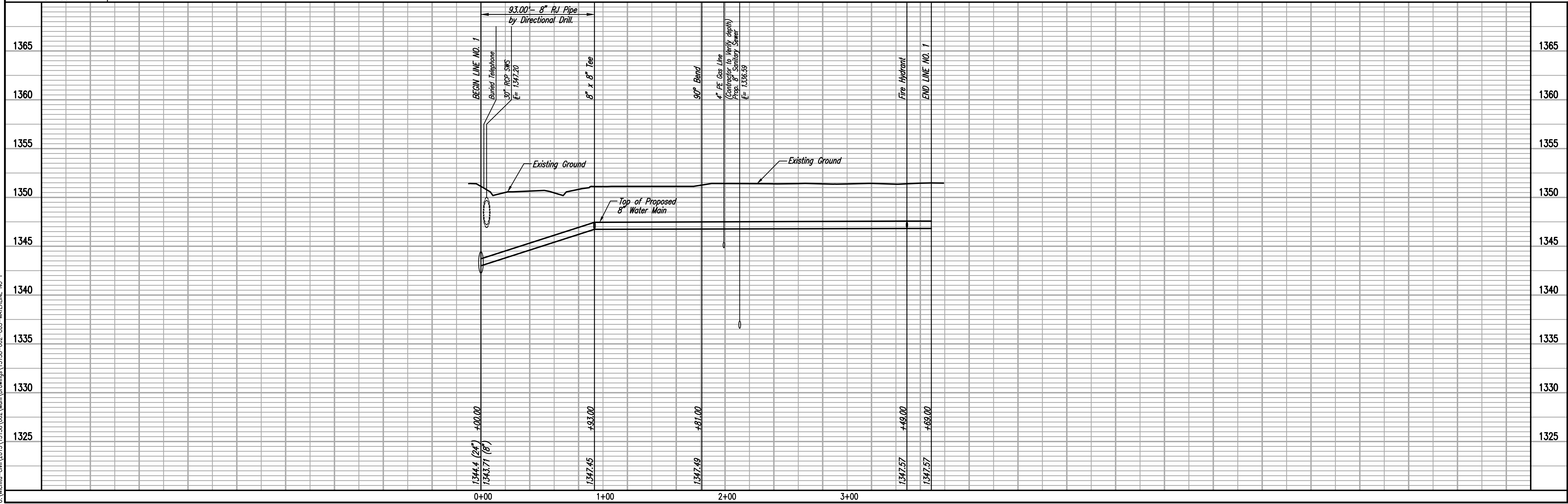
5000 - SEE SHEET NO. 4 FOR WATERLINE COORDINATES (TYP.)

\* PRIOR TO BEGINNING CONSTRUCTION, THE CONTRACTOR SHALL EXCAVATE THE EXISTING 24" WATERLINE AT STATION 0+00.00 TO VERIFY PIPE SIZE, TYPE, FITTINGS, AND HORIZONTAL AND VERTICAL LOCATION. THE CONTRACTOR SHALL REPORT HIS FINDINGS TO THE ENGINEER SO THAT ANY NECESSARY PLAN MODIFICATIONS CAN BE MADE. ANY ADDITIONAL LABOR OR MATERIALS NECESSARY TO COMPLETE THE CONNECTION SHALL BE CONSIDERED SUBSIDIARY TO THE PROJECT.

\*\* RJ PIPE SHALL BE C900 DR18 (MIN.) PVC CERTALOK OR APPROVED EQUAL.



WATERLINE NO. 1



CADILLAC LAKE - PHASE 1 (PART A)  
 WATERLINE IMPROVEMENTS  
**WATERLINE NO. 1**

DESIGNED BY: CSB, S40  
 DRAWN BY: CSL

Job No. 35-15138-002  
 Date JULY 2015

PROFESSIONAL ENGINEERING CONSULTANTS P.A.  
 303 SOUTH TOPEKA WICHITA, KS 67202  
 316-262-2691 www.pec1.com

GARY JANZEN, P.E. - CITY ENGINEER  
 CITY OF WICHITA PROJECT NO. 448-90686

Sheet 5 of 10