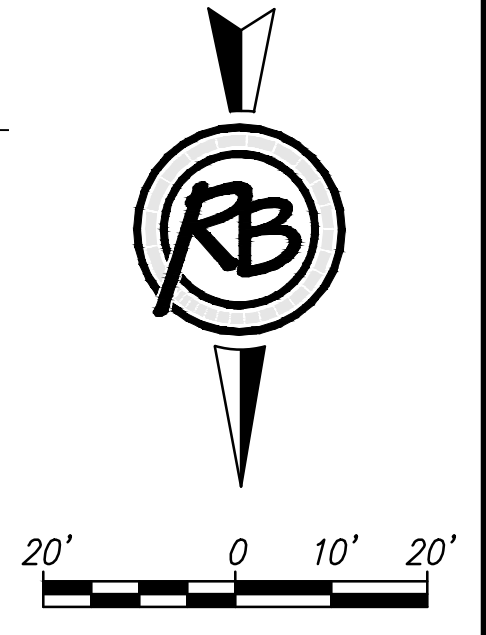
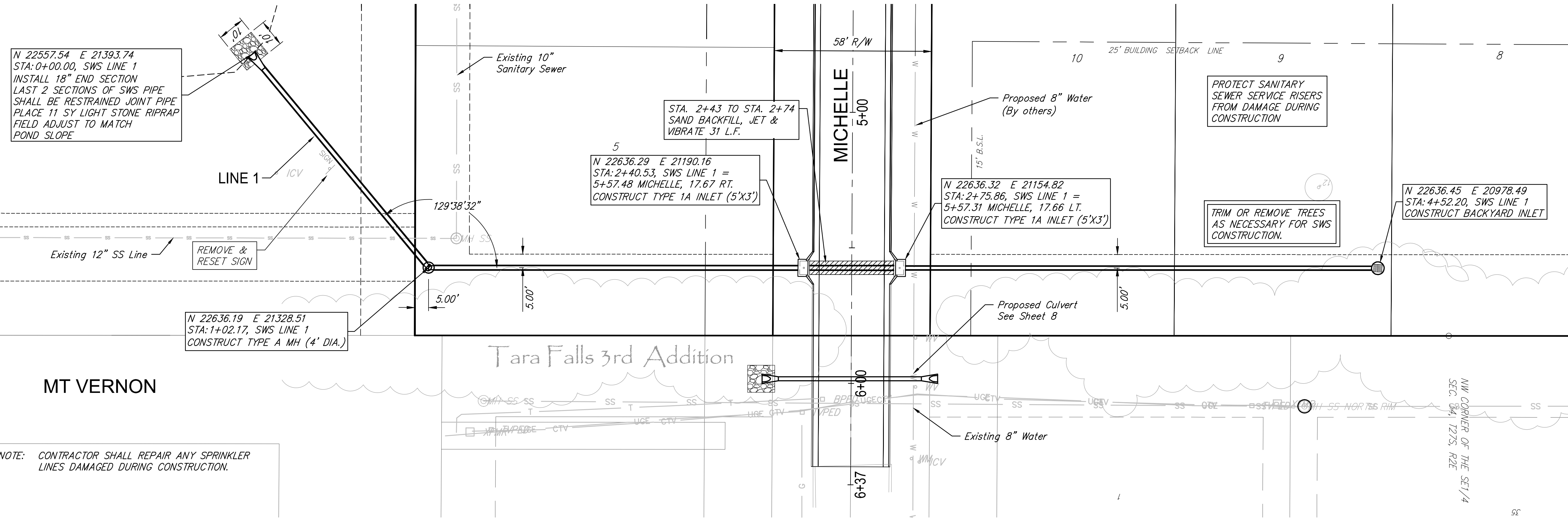


Casa Bella 2nd Addition



N 22557.54 E 21393.74
STA: 0+00.00, SWS LINE 1
INSTALL 18" END SECTION
LAST 2 SECTIONS OF SWS PIPE
SHALL BE RESTRAINED JOINT PIPE
PLACE 11 SY LIGHT STONE RIPRAP
FIELD ADJUST TO MATCH
POND SLOPE

STA. 2+43 TO STA. 2+74
SAND BACKFILL, JET &
VIBRATE 31 L.F.

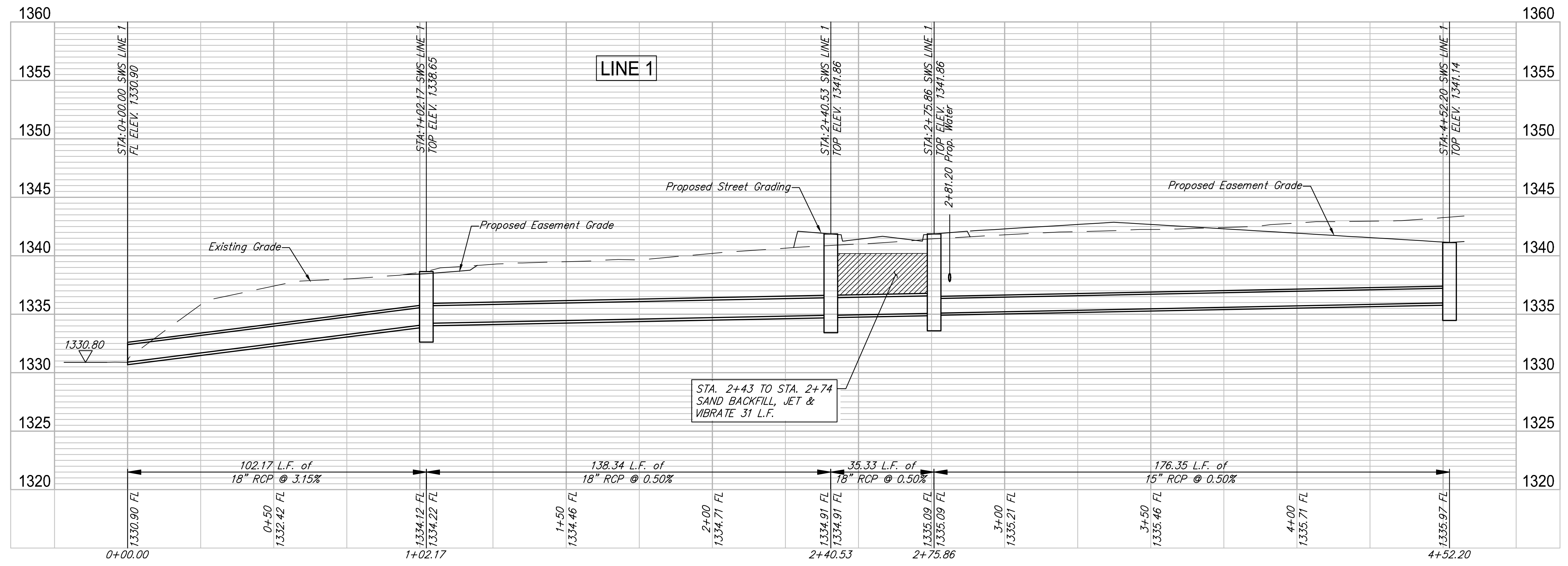
N 22636.32 E 21154.82
STA: 2+75.86, SWS LINE 1 =
5+57.31 MICHELLE, 17.66 LT.
CONSTRUCT TYPE 1A INLET (5'X3')

N 22636.45 E 20978.49
STA: 4+52.20, SWS LINE 1
CONSTRUCT BACKYARD INLET

N 22636.19 E 21328.51
STA: 1+02.17, SWS LINE 1
CONSTRUCT TYPE A MH (4' DIA.)

NOTE: CONTRACTOR SHALL REPAIR ANY SPRINKLER
LINES DAMAGED DURING CONSTRUCTION.

MT VERNON



STA. 2+43 TO STA. 2+74
SAND BACKFILL, JET &
VIBRATE 31 L.F.

F:\Projects\Projects 4700-4799\4796E (Casa Bella Phase 4 Engineering)\Paving-SWS Sheets\SWS Line 1.dwg

| | | | |
|---|-----------|--------------|------------|
| | | REVIEW | 2-5-2017 |
| | | DATE | |
| DESIGN | KWL | DRAWN | DPS |
| PROJECT NUMBER | 472-85321 | DRAWING FILE | SWS Line 1 |
| Casa Bella 2nd - Phase 4 SWS Line 1 Wichita, Kansas | | | |
| RD JOB | 4796E | SHEET | |
| | | 11 | OF |
| | | 32 | |