

MAIN 25, SOUTHWEST INTERCEPTOR SANITARY SEWER MAIN IMPROVEMENTS

to serve

SANDCREST ADDITION

CITY OF WICHITA, KANSAS

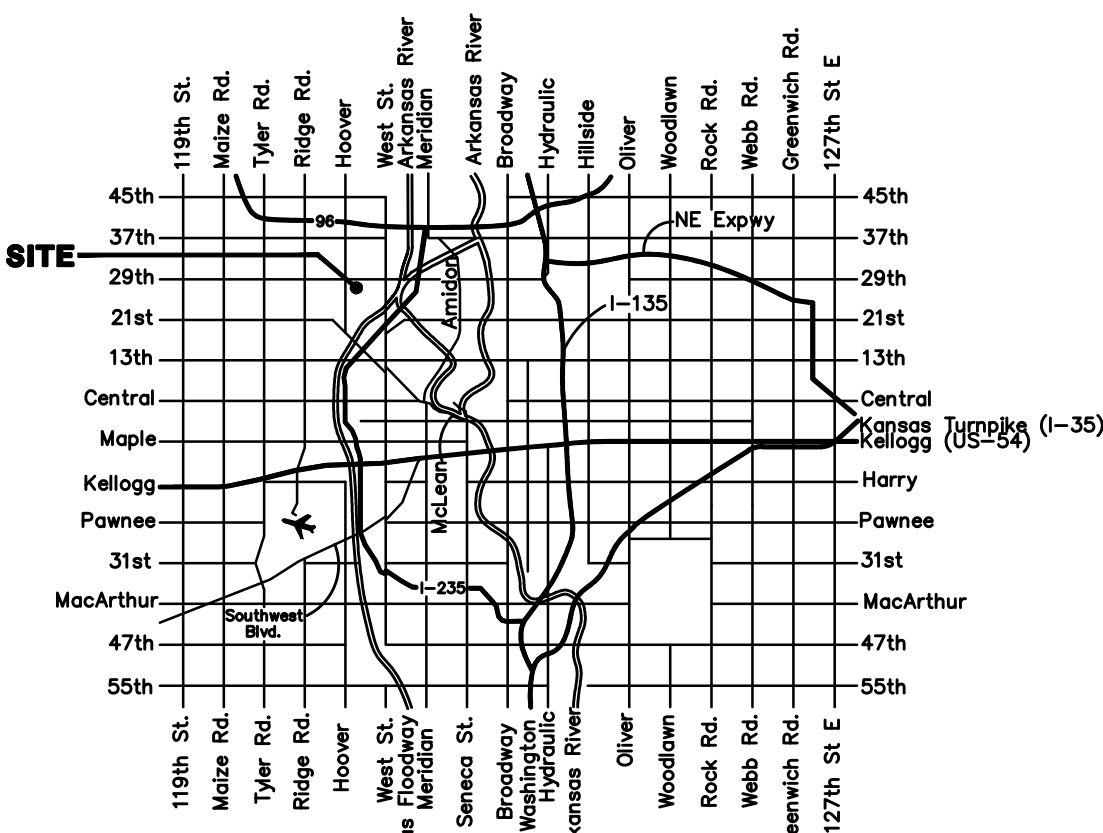
Gary Janzen, P.E. City Engineer

Project Number

468 - 85046

OCA Number

744412



Vicinity Map

BENCHMARKS

CITY OF WICHITA BENCHMARK DISK
34.9' S. & 31.2' W. OF THE SW COR.,
NW1/4, SEC. 2, TWP. 27-S, R-1-W.
ELEV. = 1327.57 NAVD88

CITY OF WICHITA BENCHMARK DISK
26.2' S. & 46.1' W. OF THE NW COR.,
NW1/4, SEC. 2, TWP. 27-S, R-1-W.
ELEV. = 1330.50 NAVD88

CITY OF WICHITA BENCHMARK DISK
0.9' E. & 29' N. OF THE NE COR.,
NW1/4, SEC. 2, TWP. 27-S, R-1-W.
ELEV. = 1325.19 NAVD88

SHEET INDEX

Title Sheet	1
Line 1	2-5
Erosion Control Plan	6
Erosion Control BMP Details	7-11
Standard Manhole Detail	12
Ring & Cover Detail	13
Traffic Control Plan	14
Coordinate Sheet	15
Copy of Plat	16-17

Nowak Construction - Contractor
J. Brand - City of Wichita, Field Project Engineer
T. Dvorak - City of Wichita, Inspector
As-built
Release Date: 03/02/2017
pdf: apr 05/02/2017

GENERAL NOTES:

- Contractor will be required to provide notice to utility companies a minimum of forty-eight (48) hours prior to any excavation, as follows:

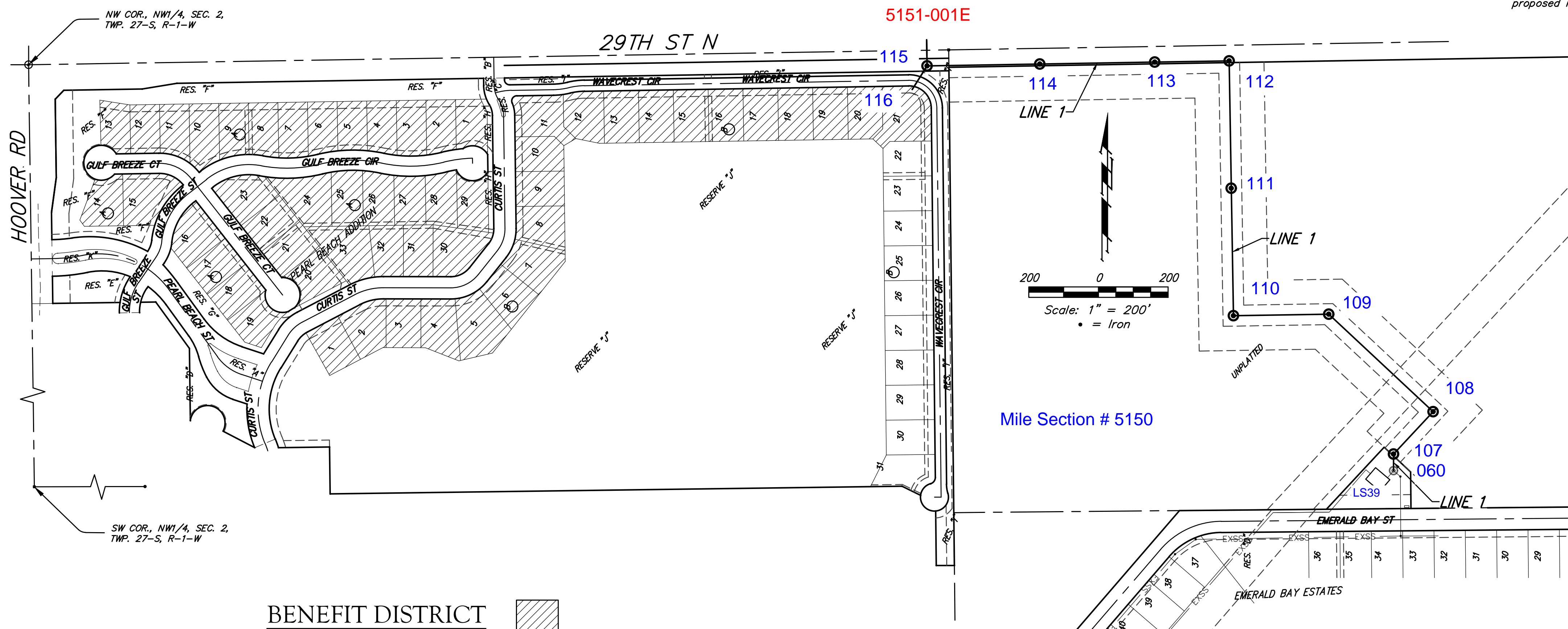
Kansas One-Call	687-2470
Cox Communications	262-4270
Kansas Gas Service	1-888-482-4950
Westar Energy	383-8650
Aquila Energy	1-800-303-0357
AT&T	268-2245
City of Wichita Water Dept.	268-4563
City of Wichita Sewer Maint.	268-4024
City of Wichita Storm Sewer Maint.	268-4090
City of Wichita Traffic Maint.	268-4034
Conoco Phillips Pipeline Co.	1-877-267-2290
Southern Star Pipeline Co.	529-6600
Kinder-Morgan Pipeline Co.	1-888-844-5658

The Contractor must notify the following in case of an emergency:

Additionally, the Contractor shall contact the City Contractor for lime harvesting, Scott Yoder with Ag Services at 620-877-7207, two weeks prior to construction. Continuous vehicle access shall be provided from West St. to the two wet pits for operation and maintenance.
- Utility service lines, poles, valve boxes, meters, and etcetera are to be adjusted as necessary by others prior to construction unless the plans specifically call for their adjustment by the Contractor or unless the plans specifically identify a utility to be adjusted by its owner during construction. Existing utilities and their location, as shown on the plans, represent the best information obtainable for design. The Contractor will be required to work around existing utilities within the right-of-way which do not conflict with proposed construction.
- Rubble from the removal of miscellaneous structures and excess excavation which is to be wasted shall be disposed of on sites to be provided by the Contractor. These sites shall be approved by the Engineer as to suitability, appearance and site location. Locations, in the opinion of the Engineer, that will leave an unsightly appearance will not be approved. All disposal sites must be approved by the Kansas Department of Health and Environment. Material either stockpiled or disposed of in a flood plain would require a Kansas State Board of Agriculture permit. Any material dumped in waters of the United States or wetlands is subject to U.S. Corps. of Engineers permitting regulations. Any material buried or stockpiled beyond approved construction limits would require additional archaeological investigations unless buried in a previously approved borrow location.
- Trees and shrubs in public right-of-way which are in direct conflict with proposed new construction shall be removed by the Contractor with the Engineer's approval. Trees and shrubs which are not in direct conflict with proposed new construction shall be saved and protected from damage.
- The Contractor shall give all property owners and/or tenants of developed property abutting the construction of this project a minimum of ten (10) days notice prior to start of construction.
- The Contractor shall be responsible for preserving property irons. The Contractor will be required to re-establish any property irons which are damaged or destroyed by his construction operations. Such irons shall be re-established by a licensed land surveyor in accordance with state laws.
- All existing and proposed erosion control measures including silt fencing, erosion control mat, straw bales, inlet barriers, and const. entrance shall be maintained throughout construction by the contractor and until project is accepted by the City of Wichita. The on-site engineer shall complete weekly reports on the status of erosion control measures. The contractor shall be required to comply with maintenance and/or replacement of erosion control measures as determined by the on-site engineer until project is accepted by City of Wichita. Maintenance and/or replacement of erosion control measures to be paid by L.S. bid item "Maintain Existing BMP's."
- All excess excavation shall remain on-site and shall be stockpiled or spread at a location determined by the engineer.
- The Contractor shall be responsible for maintaining continuous flow of sewage through construction. Contractor's proposed method for maintaining sewage flow shall be approved by the Engineer. Cost of maintaining flow of sewage through construction will not be paid for directly and this cost shall be considered as subsidiary to the other pay items of work.

Seed: Wrangler Bermuda - 2 lbs./1000 sq. ft.
Annual Rye grass - 2 lbs./1000 sq. ft.
Mulch: Prairie Hay: 2 tons/acre (in areas not covered by erosion control blanket)
Fertilizer: 12-24-12: 350 lbs./acre

All costs associated with seeding shall be included in bid item "Seeding". All seeding operations shall conform to City of Wichita Standard Specifications.
- All areas disturbed during construction shall be seeded, mulched, and fertilized as follows (Permanent Seeding):



Pipeline Crossing Notes:
The Phillips 66 Pipeline, LLC contact is Gordon Stands at 316-821-2254.
The KPC Pipeline, LLC contact is Robert Clover at 913-522-7501.

- Contact both pipeline companies a minimum of two weeks prior to construction.
- Prior to any construction or vehicles/equipment crossing the pipeline, an on-site safety meeting with Phillips 66 Pipeline and KPC Pipeline will be required.
- At the meeting, crossing locations and requirements will be reviewed but general requirements are 5' of cover for temporary dirt crossings with orange safety fence along the edges of the crossing location.
- The only vehicle/equipment crossing of the pipeline easement shall be at locations approved by the pipeline representatives.
- Contact pipeline representatives any time construction will occur within the pipeline easement.
- The orange safety fence shall be installed prior to any on-site construction. Remove and Replace immediately as necessary for construction.
- No vibratory equipment shall be used within pipeline easement.
- The pipeline companies will allow a vertical dig no closer than 15' on either side of the outside pipelines. The vertical dig must adhere to all OSHA safety policies and procedures. A bore and casing will be required under the pipelines with the bore diameter being no more than 6" larger than the casing pipe.
- The contractor shall ensure the pipeline easement drains adequately and does not impound water after construction is complete.
- The contractor shall be required to hire an approved pipeline vacuum excavation contractor to pothole and locate all pipelines and pothole or excavate four additional observation trenches as needed to depths 2' below the lowest pipeline.

Phasing Note:
The Contractor shall install the manhole at Sta. 24+97.4, Line 1 and the 10" pipe under the Wavecrest Circle prior to proceeding with the remainder of the project.

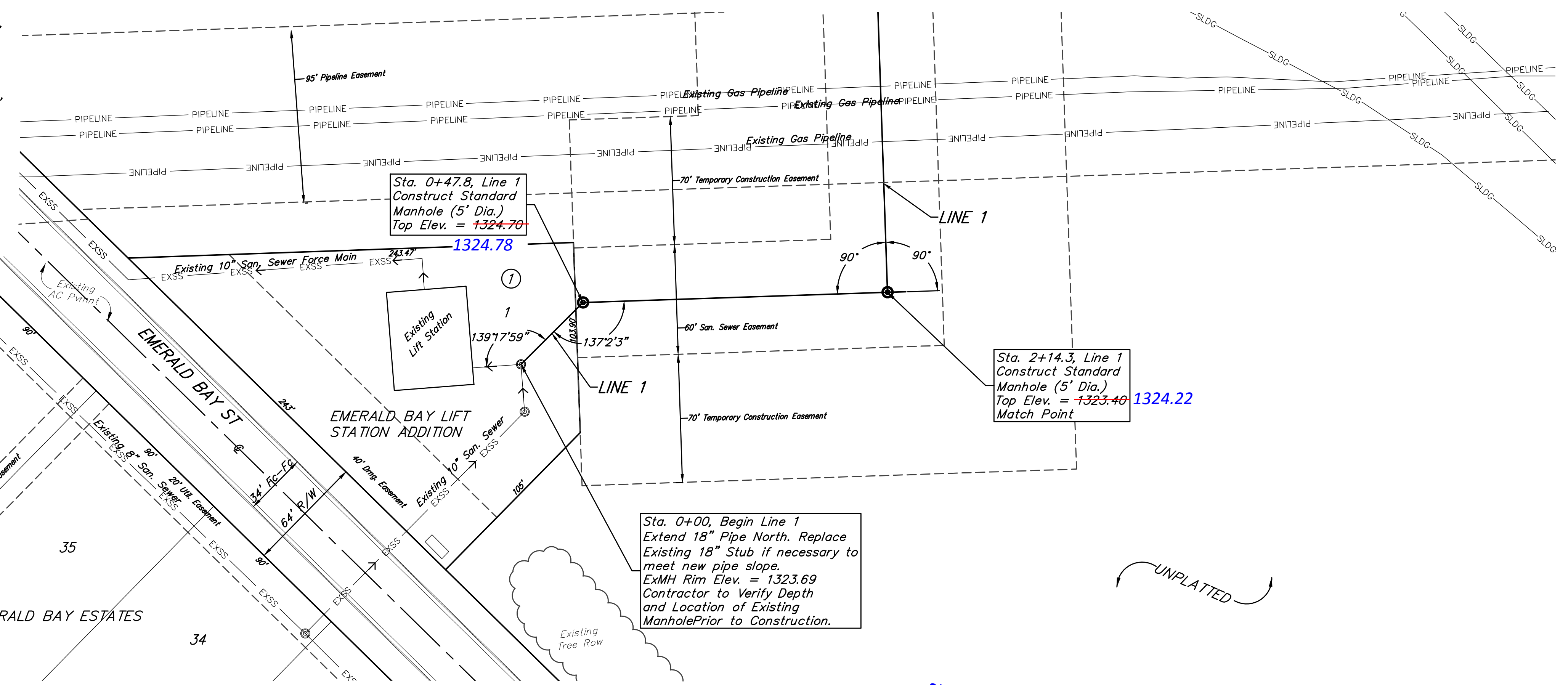


Baughman
Baughman Company, P.A. 315 Ellis St. Wichita, KS 67211 P 316-262-7271 F 316-262-0149
ENGINEERING | SURVEYING | PLANNING | LANDSCAPE ARCHITECTURE

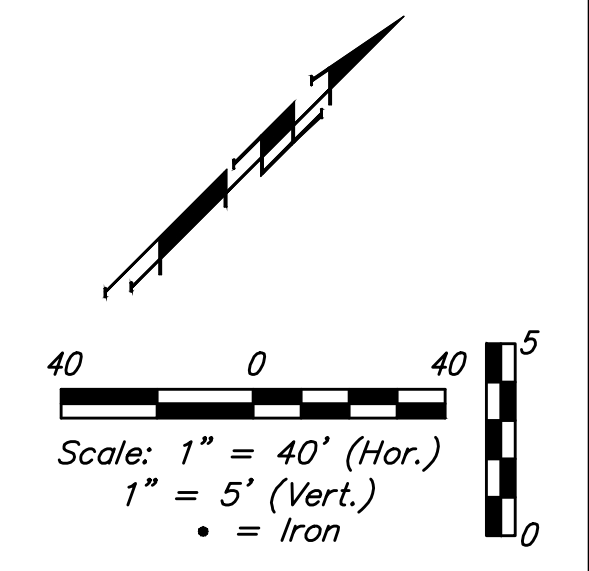
BENCHMARKS:
 CITY OF WICHITA BENCHMARK DISK
 34.9' S. & 31.2' W. OF THE SW COR.,
 NW1/4, SEC. 2, TWP. 27-S, R-1-W.
 ELEV. = 1327.57 NAVD88

CITY OF WICHITA BENCHMARK DISK
 26.2' S. & 46.1' W. OF THE NW COR.,
 NW1/4, SEC. 2, TWP. 27-S, R-1-W.
 ELEV. = 1330.50 NAVD88

CITY OF WICHITA BENCHMARK DISK
 0.9' E. & 29' N. OF THE NE COR.,
 NW1/4, SEC. 2, TWP. 27-S, R-1-W.
 ELEV. = 1325.19 NAVD88



UNPLATTED

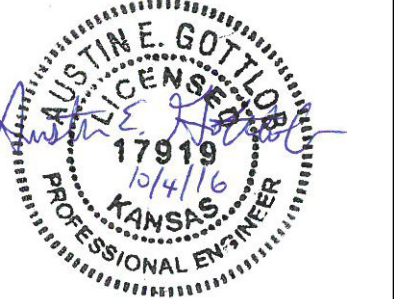
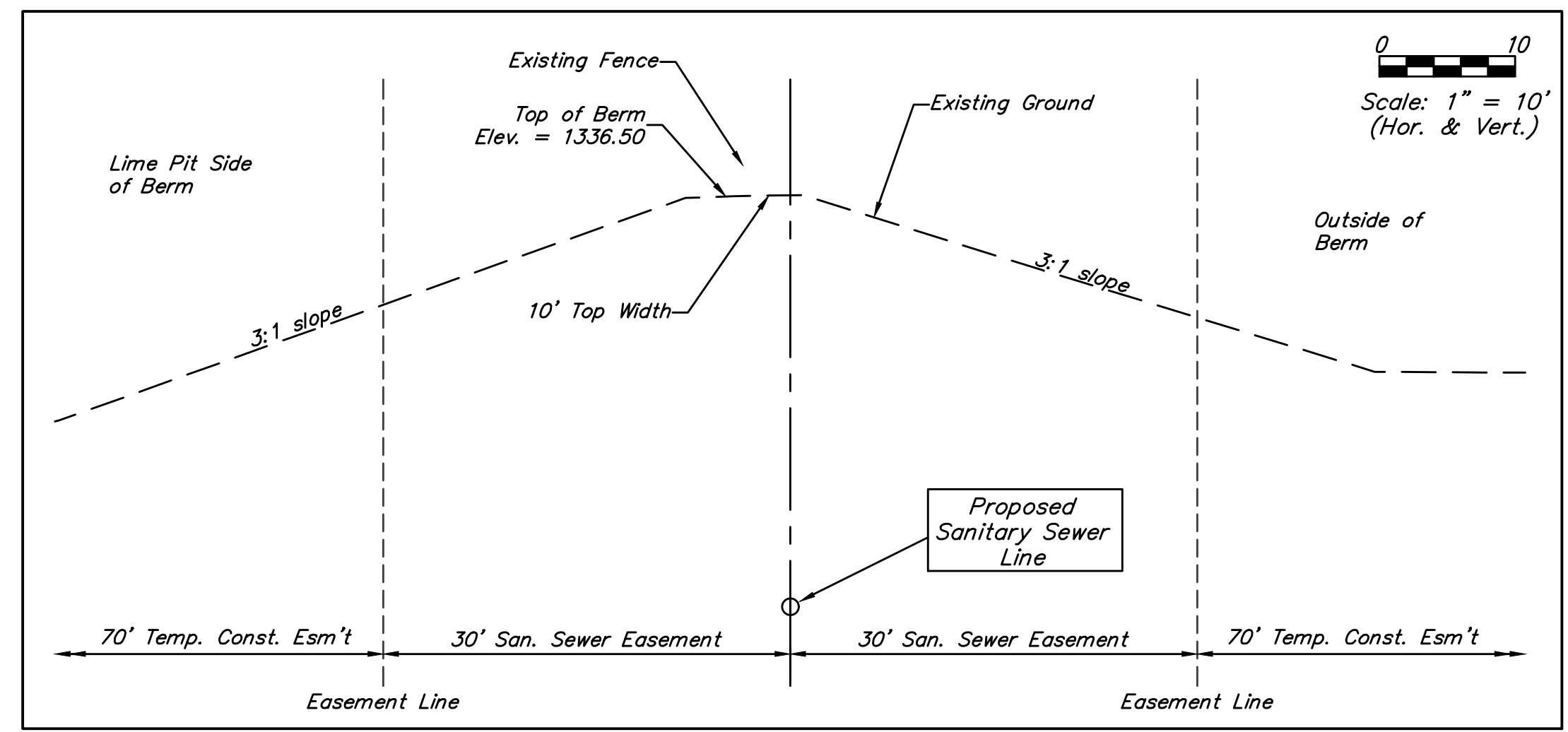
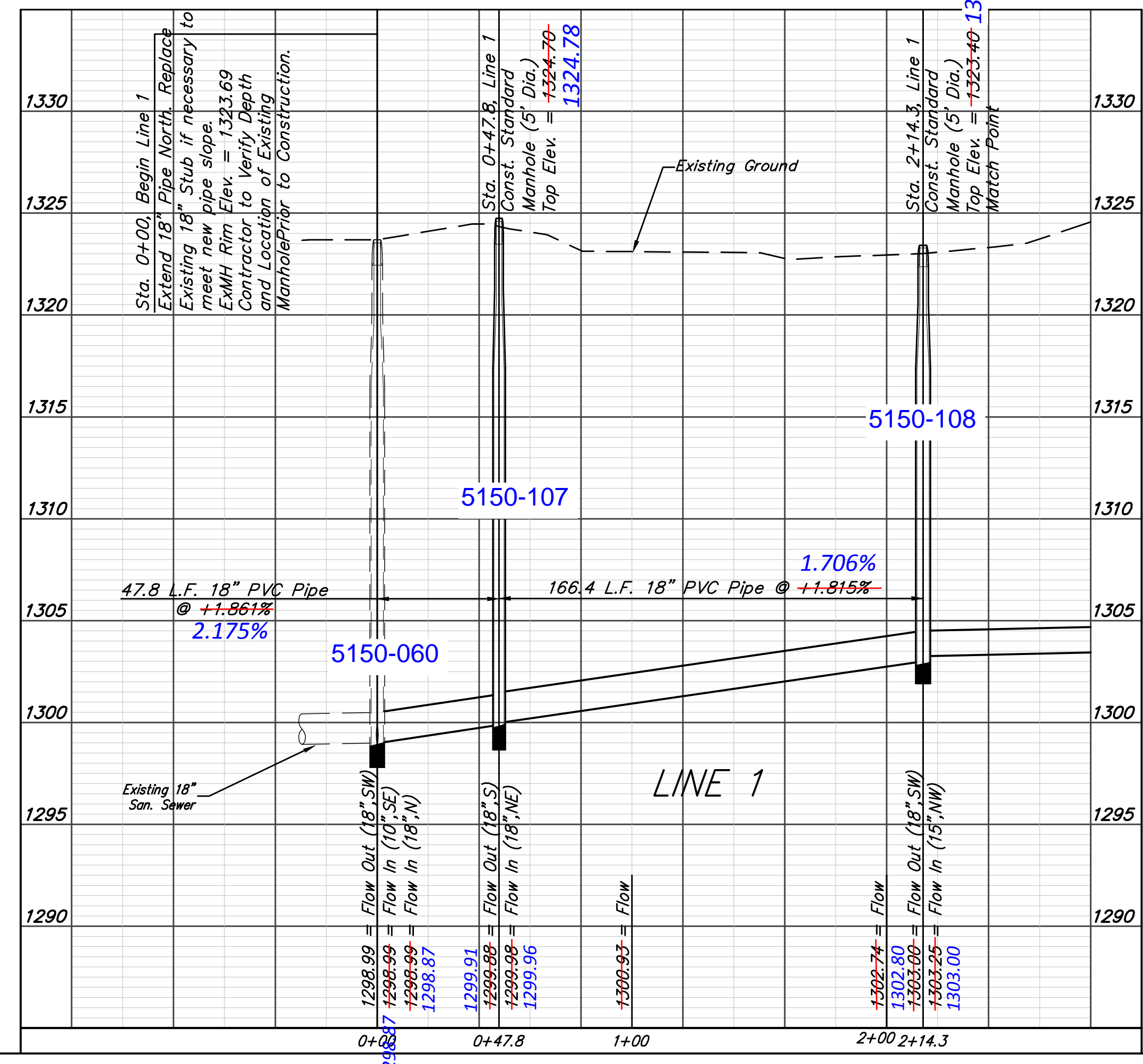


The Contractor shall contact the City Contractor for lime harvesting, Scott Yoder with Ag Services at 620-877-7207, two weeks prior to coordinate construction activities.

NOTE:
 All manholes shall have liner system per city specifications.
 Contractor to install Rhino TriView Marker posts or approved equal at all manhole locations. The markers shall be a minimum of 48" above ground and installed over a U-channel post per manufacturer's instructions. The markers shall be green in color. Contractor shall contact Engineer for decal information prior to construction. Contractor to contact Rhino Markers at 1-800-522-4343 for pricing and ordering information. All costs associated with manhole markers shall be subsidiary to the manhole bid item.

UNPLATTED

Sta. 0+00, Begin Line 1
 Extend 18" Pipe North. Replace Existing 18" Stub if necessary to meet new pipe slope.
 ExMH Rim Elev. = 1323.69
 Contractor to Verify Depth and Location of Existing Manhole Prior to Construction.



Baughman Sandcrest Addition
LINE 1
 Sanitary Sewer Improvements

Baughman Company, P.A. 315 Ellis St. Wichita, KS 67211 P 316-262-2149
 ENGINEERING | SURVEYING | PLANNING | LANDSCAPE ARCHITECTURE

PROJECT NUMBER: 468-85046
 DESIGN: AEG
 DRAWN: JAK
 APPROVED: [Signature]
 DATE: 8/26/16

REVISIONS:

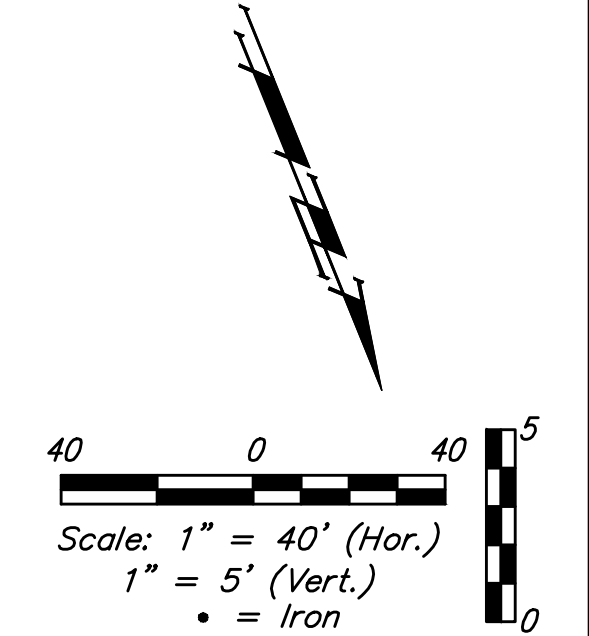
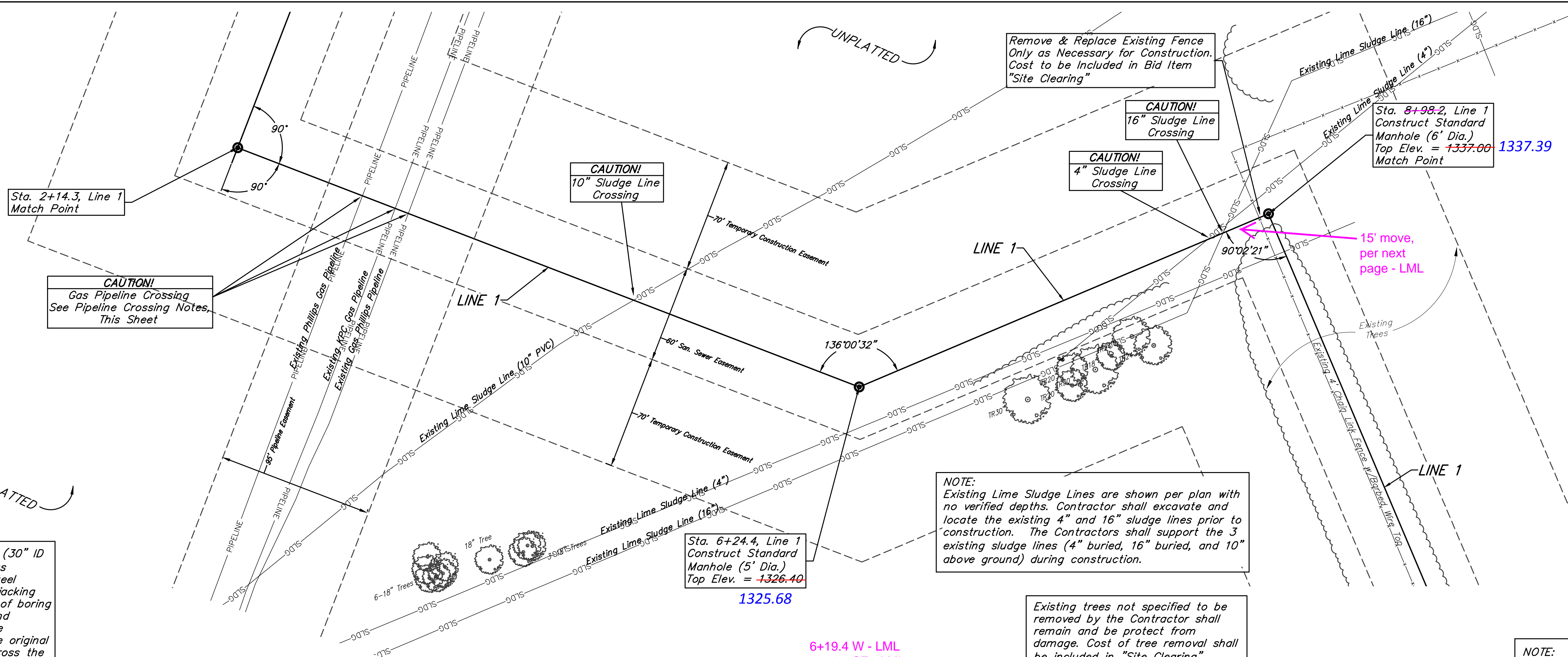
SCALE: Noted
 SHEET: 2 OF 17

E:\Projects\Pearl Beach_12402\F860\Engineering\SS MAIN_15-10-E315\SS MAIN.dwg

BENCHMARKS:
 CITY OF WICHITA BENCHMARK DISK
 34.9' S. & 31.2' W. OF THE SW COR.,
 NW1/4, SEC. 2, TWP. 27-S, R-1-W.
 ELEV. = 1327.57 NAVD88

CITY OF WICHITA BENCHMARK DISK
 26.2' S. & 46.1' W. OF THE NW COR.,
 NW1/4, SEC. 2, TWP. 27-S, R-1-W.
 ELEV. = 1330.50 NAVD88

CITY OF WICHITA BENCHMARK DISK
 0.9' E. & 29' N. OF THE NE COR.,
 NW1/4, SEC. 2, TWP. 27-S, R-1-W.
 ELEV. = 1325.19 NAVD88

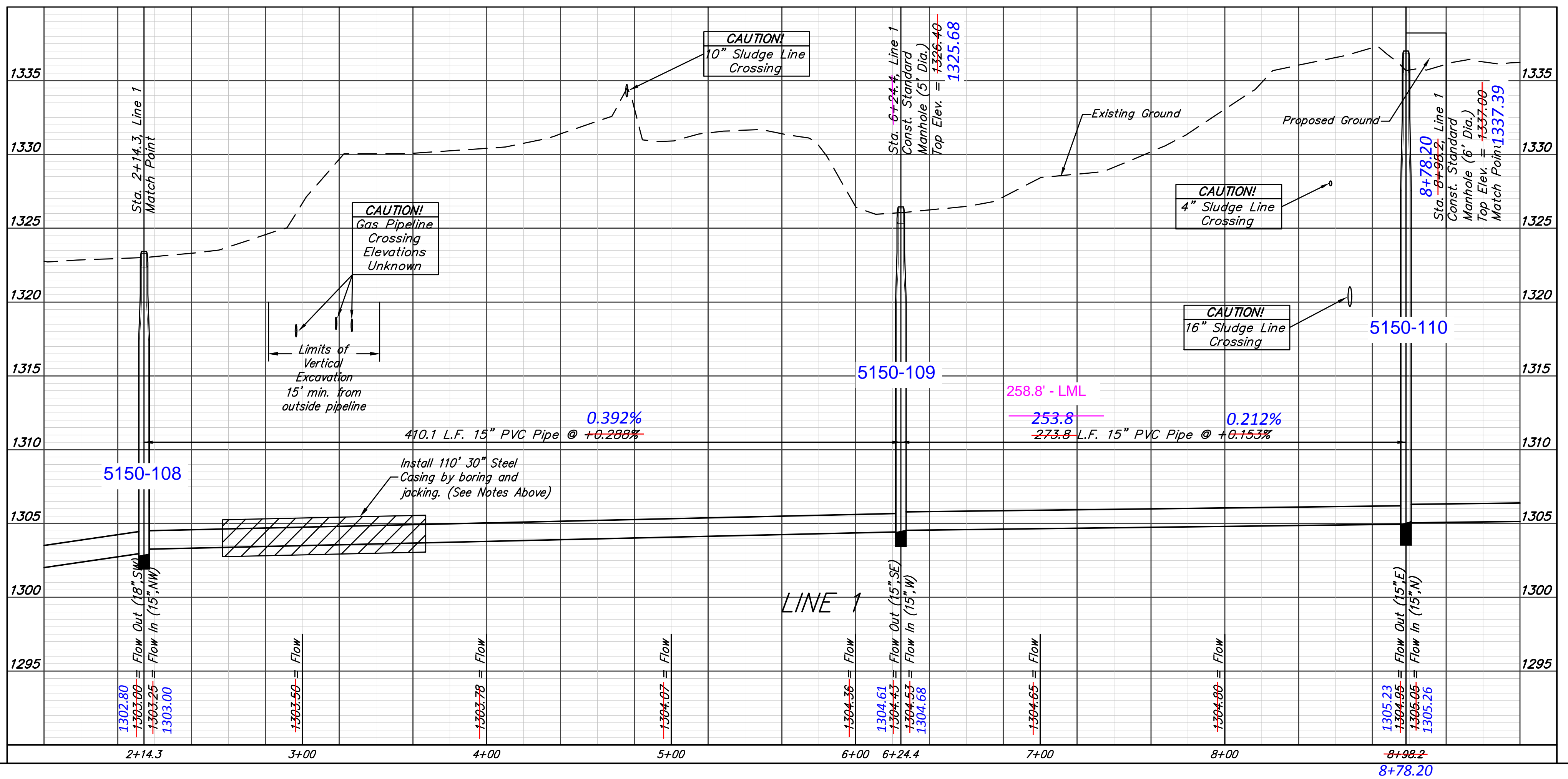


The bid item, "Pipe, Casing (30" ID min.)" shall include all costs associated with installing steel casing pipe by boring and jacking methods. Additional length of boring due to trench conditions and pipeline requirements will be considered subsidiary to the original bid quantity. Open cut across the pipelines will not be allowed. See pipeline crossing notes for additional information.

***Pipeline Crossing Notes**
 The Contractor shall contact Gordon Stands with Phillips 66 Pipeline, LLC at 316-821-2254 and Robert Clover with KPC Pipeline, LLC at 913-522-7501 a minimum of two weeks prior to construction.
 The only vehicle/equipment crossing of the pipeline easement shall be at locations approved by the pipeline representatives. Contractor shall install 5' of cover for temporary dirt crossings
 Contact pipeline representatives any time construction will occur within the pipeline easement.
 Orange safety fence shall be installed prior to any on-site construction. Remove and Replace immediately as necessary for construction.
 No vibratory equipment shall be used within pipeline easement.

NOTE:
 All manholes shall have liner system per city specifications.
 Contractor to install Rhino TriView Marker posts or approved equal at all manhole locations. The markers shall be a minimum of 48" above ground and installed over a U-channel post per manufacturer's instructions. The markers shall be green in color. Contractor shall contact Engineer for decal information prior to construction. Contractor to contact Rhino Markers at 1-800-522-4343 for pricing and ordering information. All costs associated with manhole markers shall be subsidiary to the manhole bid item.

The Contractor shall contact the City Contractor for lime harvesting, Scott Yoder with Ag Services at 620-877-7207, two weeks prior to coordinate construction activities. Continuous vehicle access shall be provided from West St. to the two wet pits for operation and maintenance.

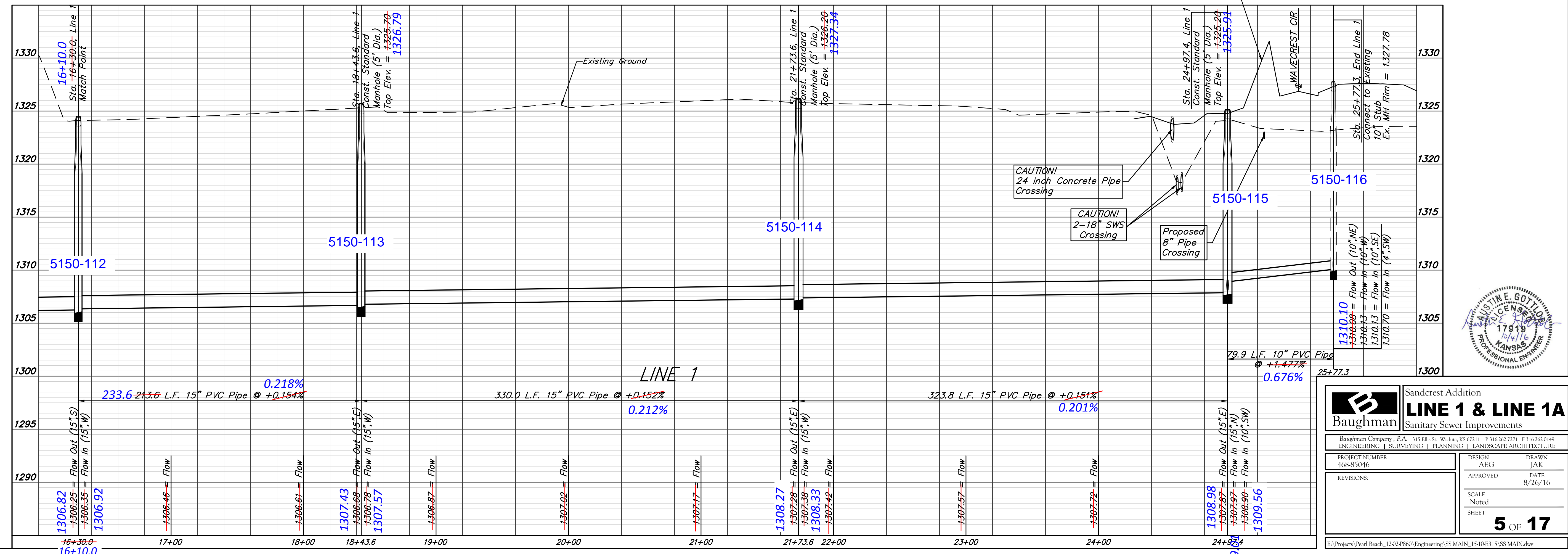
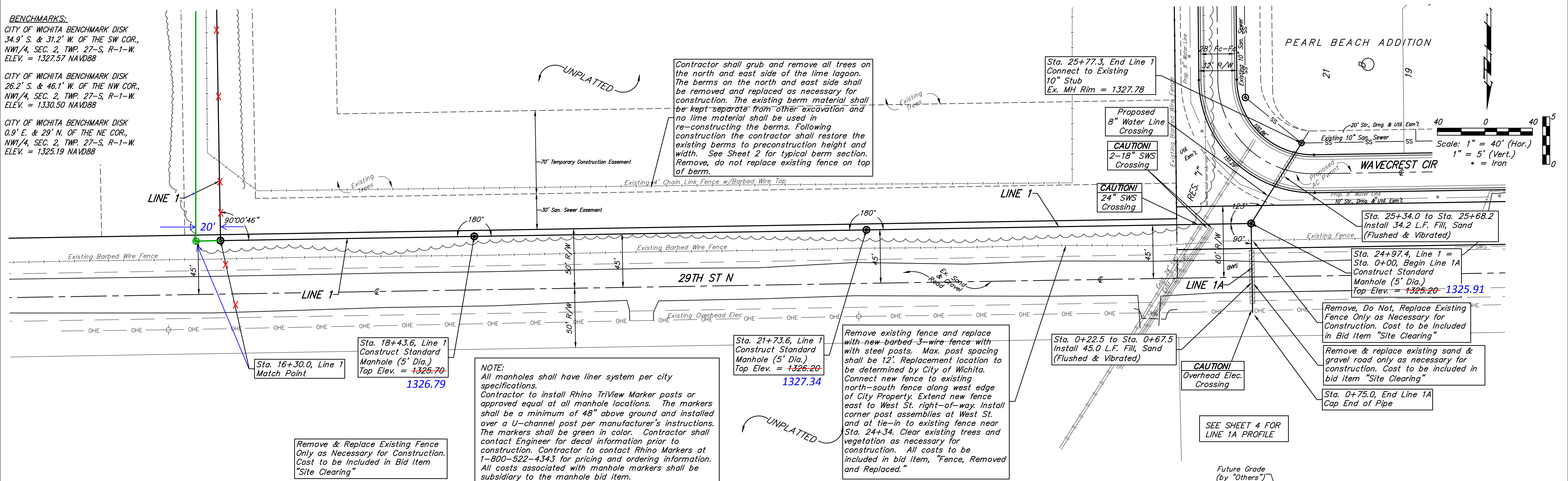


		Sandcrest Addition	
		LINE 1	
Sanitary Sewer Improvements		<small>Baughman Company, P.A. 315 Ellis St. Wichita, KS 67211 P 316-262-7271 F 316-262-0149 ENGINEERING SURVEYING PLANNING LANDSCAPE ARCHITECTURE</small>	
PROJECT NUMBER 468-85046	DESIGN AEG	DRAWN JAK	APPROVED DATE 8/26/16
REVISIONS:	SCALE Noted SHEET		

BENCHMARKS:
 CITY OF WICHITA BENCHMARK DISK
 34.9' S. & 31.2' W. OF THE SW COR.,
 NW1/4, SEC. 2, TWP. 27-S, R-1-W.
 ELEV. = 1327.57 NAVD88

CITY OF WICHITA BENCHMARK DISK
 26.2' S. & 46.1' W. OF THE NW COR.,
 NW1/4, SEC. 2, TWP. 27-S, R-1-W.
 ELEV. = 1330.50 NAVD88

CITY OF WICHITA BENCHMARK DISK
 0.9' E. & 29' N. OF THE NE COR.,
 NW1/4, SEC. 2, TWP. 27-S, R-1-W.
 ELEV. = 1325.19 NAVD88



Baughman Sandcrest Addition
LINE 1 & LINE 1A
 Sanitary Sewer Improvements

Baughman Company, P.A. 315 Ellis St. Wichita, KS 67211 P 316-262-7271 F 316-262-0149
 ENGINEERING | SURVEYING | PLANNING | LANDSCAPE ARCHITECTURE

PROJECT NUMBER: 468-85046
 DESIGN: AEG
 DRAWN: JAK
 APPROVED: [Signature]
 DATE: 8/26/16

REVISIONS:

SCALE: Noted
 SHEET: 5 OF 17

E:\Projects\Pearl Beach_1202\8660\Engineering\SS MAIN_1510E315\SS MAIN.dwg

