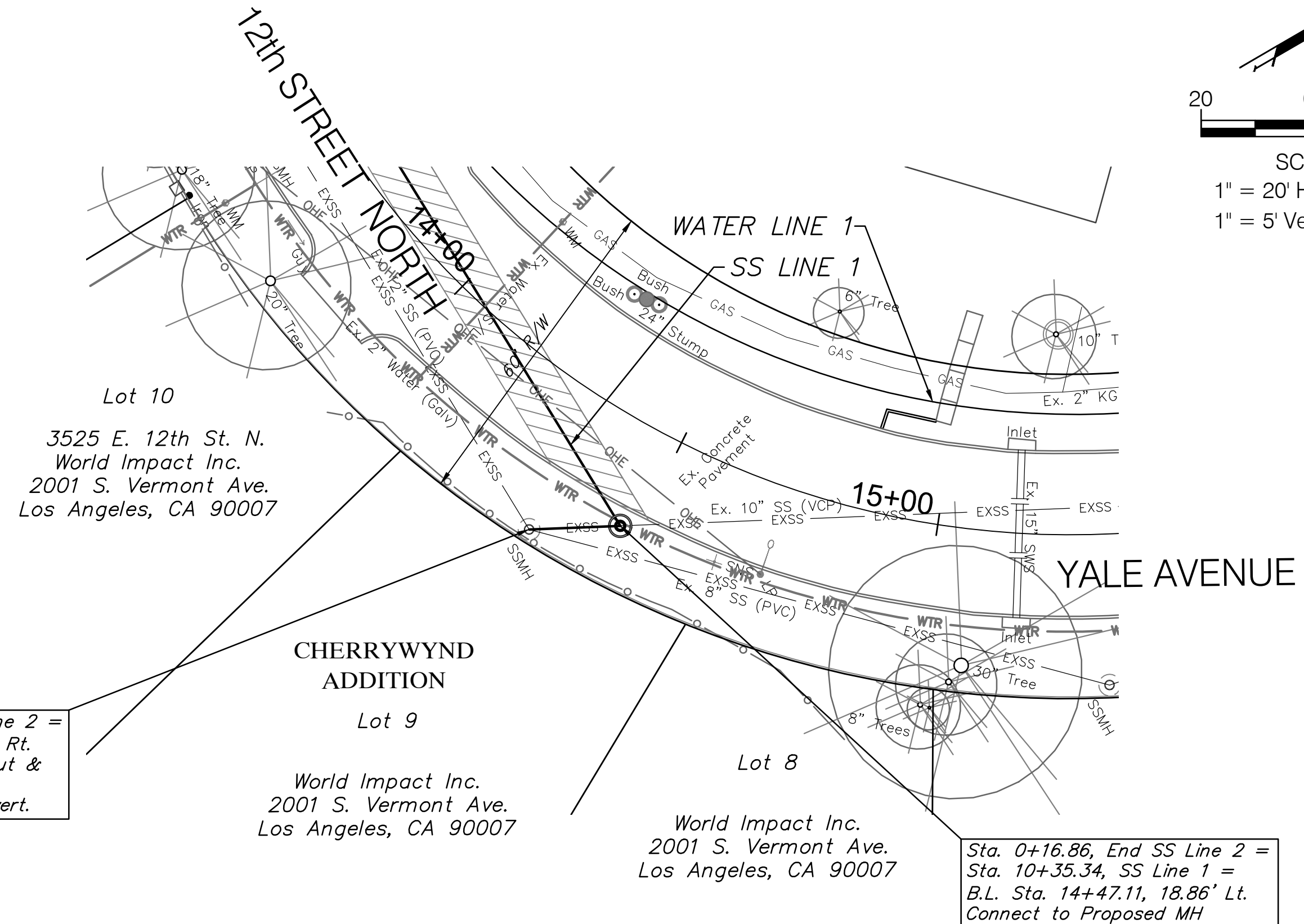
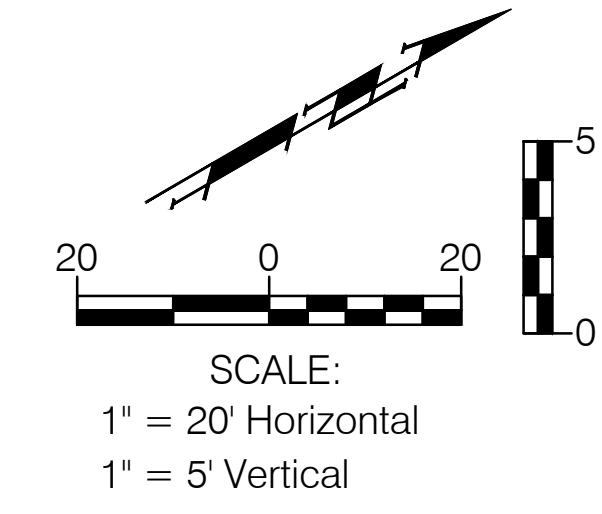


BENCHMARK:
 BM #2 - Chiseled "X" in the South Lane of 12th Street North
 Just West of the Walk to 3501 E. 12th Street North.
 Elev. = 1358.70 (NAVD 88)

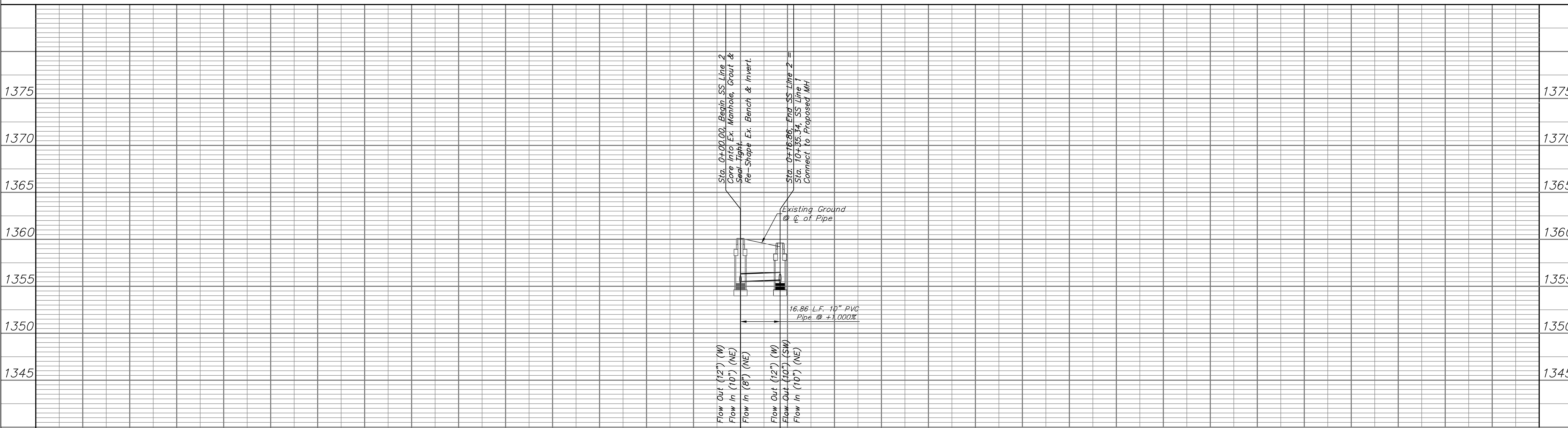


SS Line 2 has been designed to be an overflow pipe for SS Line 1. See Note on Previous Sheet.

Sta. 0+00.00, Begin SS Line 2 =
 B.L. Sta. 14+34.64, 27.83' Rt.
 Core Into Ex. Manhole, Grout &
 Seal Tight.
 Re-Shape Ex. Bench & Invert.

Sta. 0+16.86, End SS Line 2 =
 Sta. 10+35.34, SS Line 1 =
 B.L. Sta. 14+47.11, 18.86' Lt.
 Connect to Proposed MH

Note:
 Pavement, Sidewalks, Etc.
 To Be Removed Are
 Indicated By:



1355.33 = Flow Out (12") (W)
 1355.49 = Flow In (10") (NE)
 1355.36 = Flow In (8") (NE)

1355.33 = Flow Out (12") (W)
 1355.66 = Flow Out (10") (SW)
 1355.54 = Flow In (10") (NE)

Sta. 0+00.00, Begin SS Line 2 =
 Core Into Ex. Manhole, Grout &
 Seal Tight.
 Re-Shape Ex. Bench & Invert.

Sta. 0+16.86, End SS Line 2 =
 Sta. 10+35.34, SS Line 1 =
 Connect to Proposed MH

Existing Ground
 @ c of Pipe

16.86 L.F. 10" PVC
 Pipe @ +1.000%

0+00.00 0+16.86

Drawing File: E:\Projects\Fairmount Park Water & Sewer\Fairmount Base.dwg (SS 01)
 Project No. 16-114597 CAPITAL IMPROVEMENT PROJECT
12TH STREET NORTH SANITARY SEWER
 SS Line 2 - Sta. 0+00.00 to 0+16.86
 FAIRMOUNT PARK ADDITION WATER & SANITARY SEWER IMPROVEMENTS

Baughman Company, P.A.
 315 Ellis St. Wichita, KS 67211 P 316-262-7271 F 316-262-0149
 ENGINEERING | SURVEYING | PLANNING | LANDSCAPE ARCHITECTURE

May 2017
 SHEET
 OF 5
 24