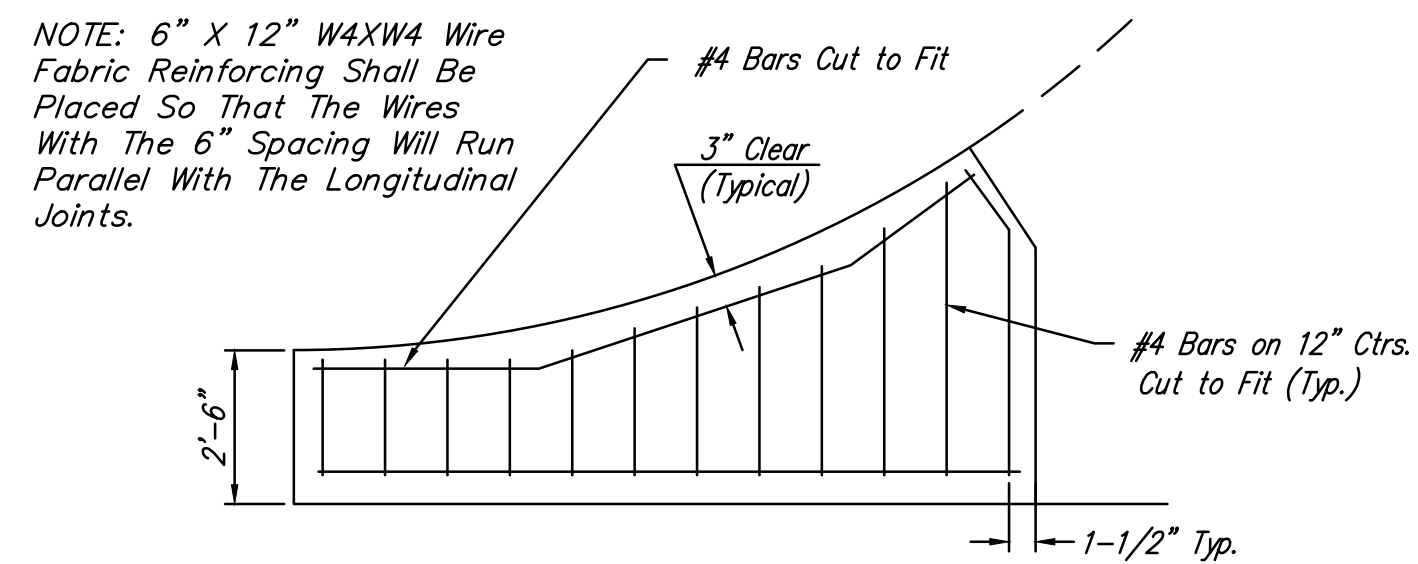


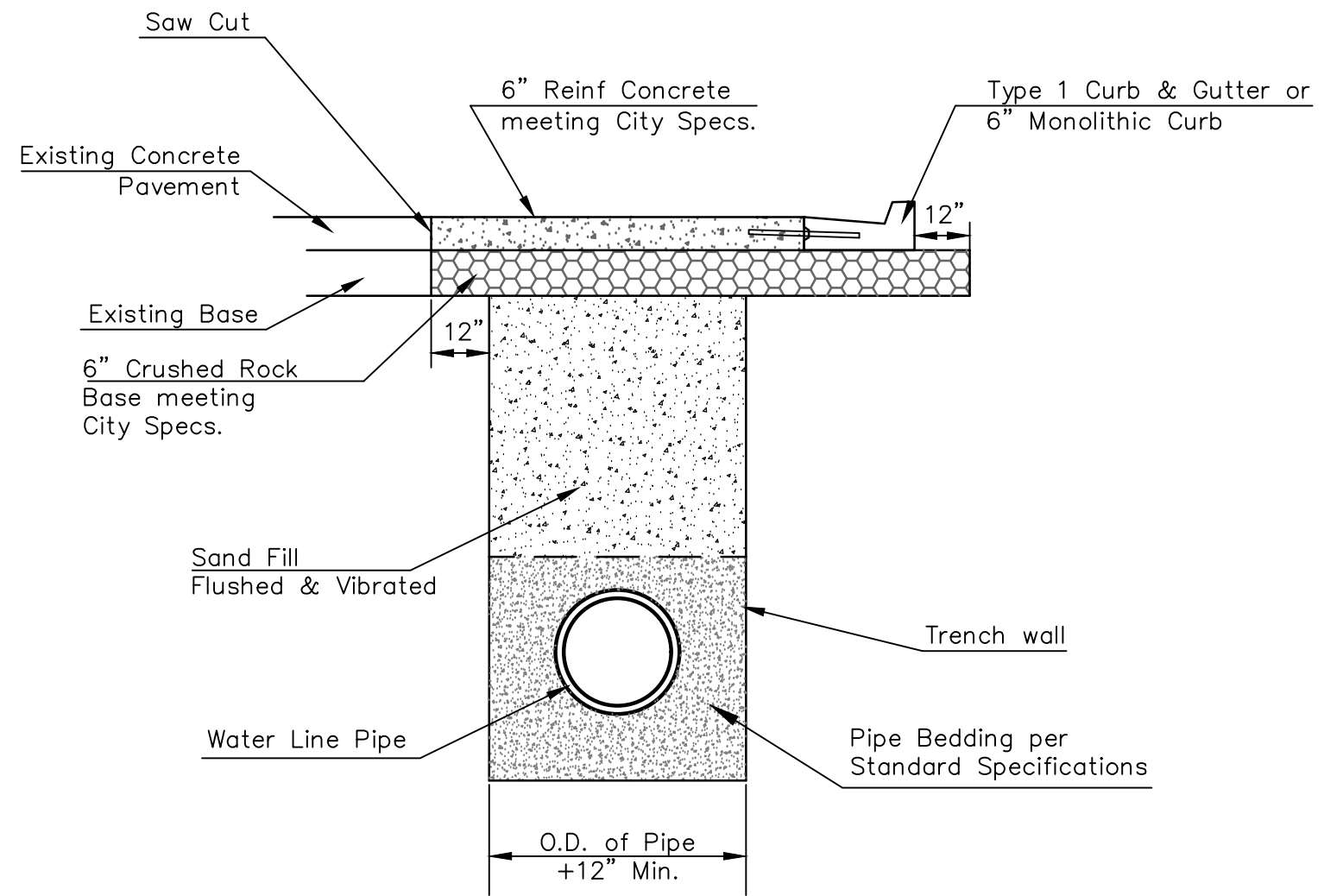
WATER METER REPLACEMENT & ADJUSTMENT TABLE					
House #	Street	W.L. Station	Ex. Offset	Type of Service	Remarks
Water Line 1					
1262 N	Hillside Ave.	1+28.3	34.0' Rt.	Long	
3217 E	12th Street N.	2+26.8	43.6' Rt.	Long	
3223 E	12th Street N.	3+21.7	42.6' Rt.	Long	
3231 E	12th Street N.	4+05.4	44.1' Rt.	Long	
3241 E	12th Street N.	4+40.2	45.8' Rt.	Long	
3251 E	12th Street N.	5+21.1	44.0' Rt.	Long	
3250 E	12th Street N.	5+24.7	3.0' Rt.	Short	
3255 E	12th Street N.	5+68.2	44.3' Rt.	Long	Move Tap 5' East
3261 E	12th Street N.	6+56.9	47.9' Rt.	Long	
3411 E	12th Street N.	7+32.0	47.5' Rt.	Long	
3415 E	12th Street N.	8+52.3	38.4' Rt.	Long	
3441 E	12th Street N.	8+90.1	39.5' Rt.	Long	
3453 E	12th Street N.	9+67.2	40.6' Rt.	Long	
3501 E	12th Street N.	10+70.6	40.0' Rt.	Long	
3507 E	12th Street N.	11+70.1	40.7' Rt.	Long	
3525 E	12th Street N.	12+86.9	42.5' Rt.	Long	
1305 N	Yale Ave.	13+23.7	1.5' Lt.	Short	
1320 N	Yale Ave.	14+40.4	41.5' Rt.	Long	
1334 N	Yale Ave.	15+27.8	43.9' Rt.	Long	
1315 N	Yale Ave.	15+34.8	2.1' Rt.	Short	
1340 N	Yale Ave.	16+22.3	45.6' Rt.	Long	
1325 N	Yale Ave.	16+22.6	2.7' Lt.	Short	
1333 N	Yale Ave.	16+87.6	1.9' Rt.	Short	
1354 N	Yale Ave.	17+72.8	48.6' Rt.	Long	
1360 N	Yale Ave.	18+47.7	50.6' Rt.	Long	Tap Ex. 8" Water
Water Line 2					
3202 E	12th Street N.	0+73.3	38.5' Rt.	Long	
1321 N	Holyoke Ave.	1+29.8	7.2' Lt.	Short	
1327 N	Holyoke Ave.	1+86.7	6.2' Lt.	Short	
1324 N	Holyoke Ave.	2+43.0	35.2' Rt.	Long	
Water Line 4					
3500 E	12th Street N.	0+53.8	42.5' Rt.	Long	
1308 N	Vassar Ave.	0+96.5	42.6' Rt.	Long	
1305 N	Vassar Ave.	1+21.0	1.2' Rt.	Short	
1312 N	Vassar Ave.	1+38.6	43.8' Rt.	Long	
1311 N	Vassar Ave.	1+45.2	2.8' Rt.	Short	
1319 N	Vassar Ave.	2+22.6	5.3' Rt.	Short	
1324 N	Vassar Ave.	2+61.7	45.1' Rt.	Long	
1327 N	Vassar Ave.	2+65.0	5.2' Rt.	Short	
1330 N	Vassar Ave.	3+10.0	47.6' Rt.	Long	
1340 N	Vassar Ave.	3+77.6	47.5' Rt.	Long	
1333 N	Vassar Ave.	3+83.4	4.8' Rt.	Short	
1344 N	Vassar Ave.	4+29.9	48.0' Rt.	Long	
1337 N	Vassar Ave.	4+91.0	5.1' Rt.	Short	

The Proposed Services will replace everything from the new main to the existing water meter, which will remain. The Contractor will be responsible for providing any adapters necessary to connect the new 1" services to the existing 3/8" water meters. All Cost associated with this work shall be SUBSIDIARY to the Service Installation.

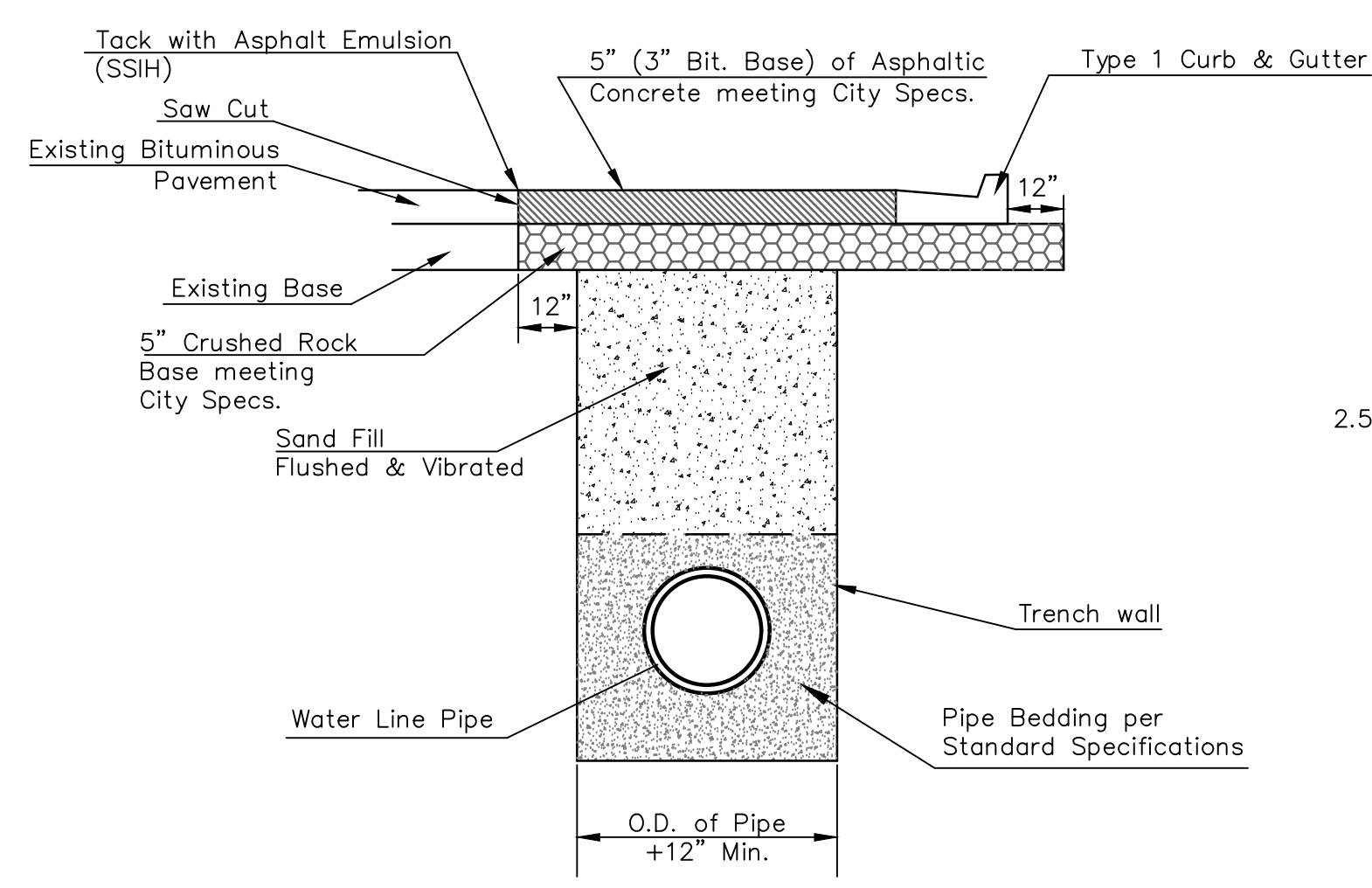
2" WATER SERVICE REPLACEMENT TABLE				
Address	Ex. Service	Prop. B.L. Station	Prop. Offset new Main	Remarks
Maple Grove Cemetery 1000 N. Hillside	2"	7+27.71	21.5' Rt	Install 55 L.F. 2" pipe to Meter*
*—Includes Tracer Wire				



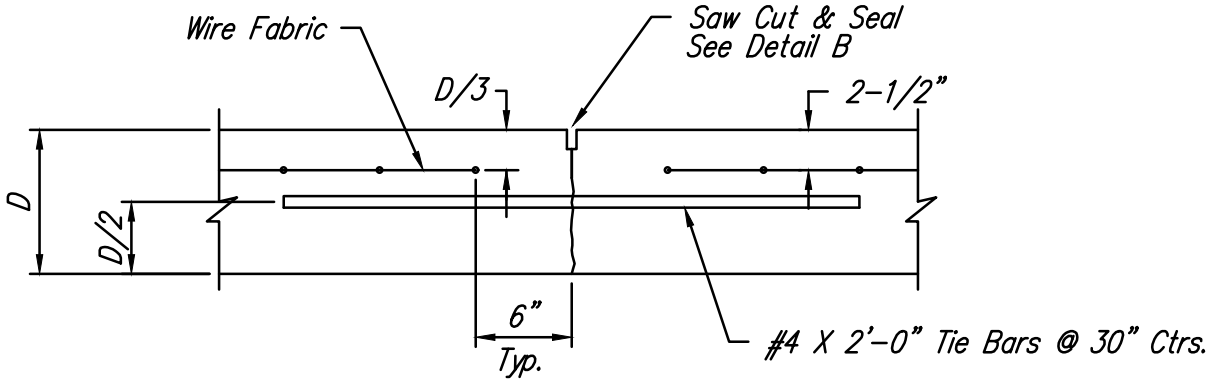
WING REINFORCING DETAIL



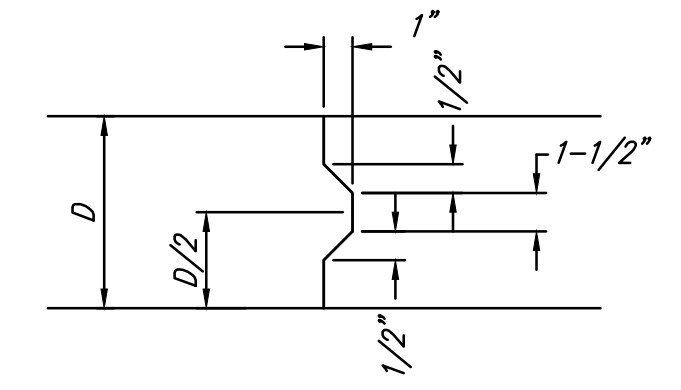
REINF. CONCRETE PAVEMENT REPLACEMENT DETAIL



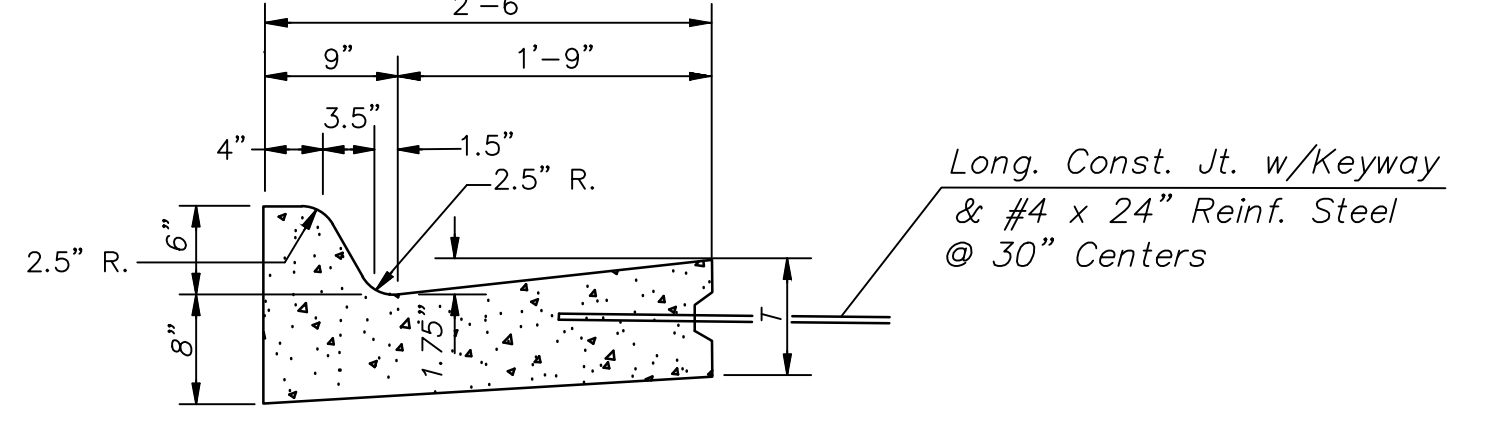
AC PAVEMENT REPLACEMENT DETAIL



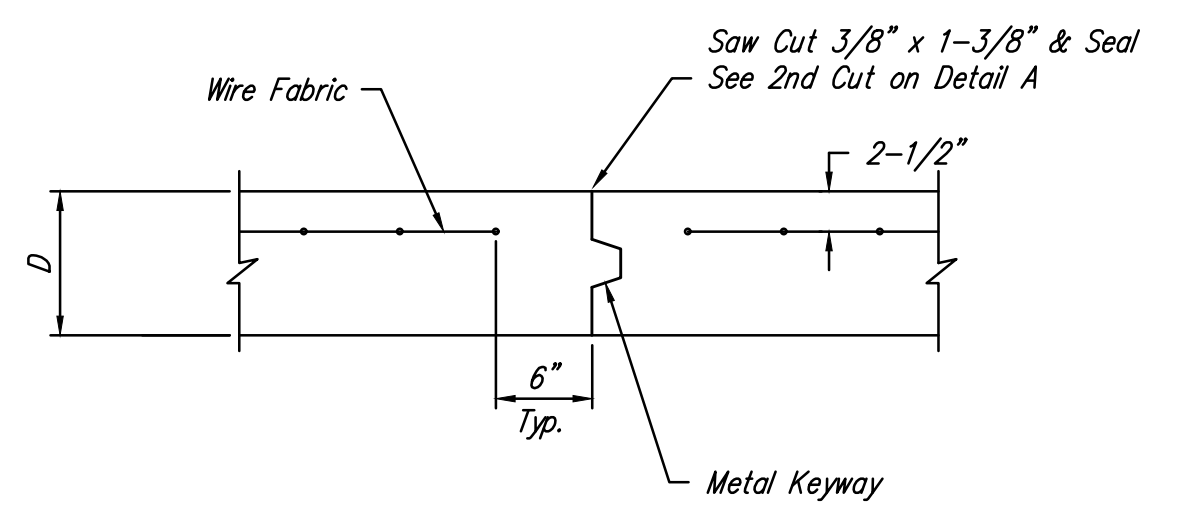
LONGITUDINAL JOINT DETAIL (L.J.)



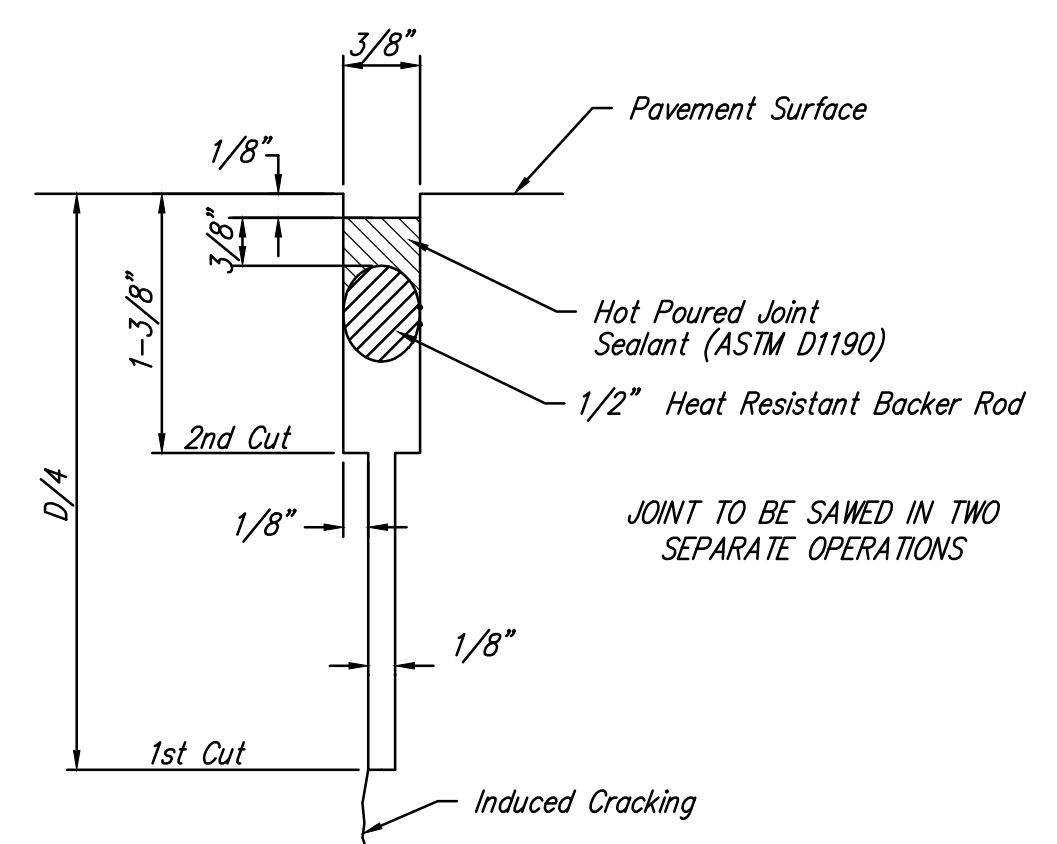
KEYWAY DETAIL



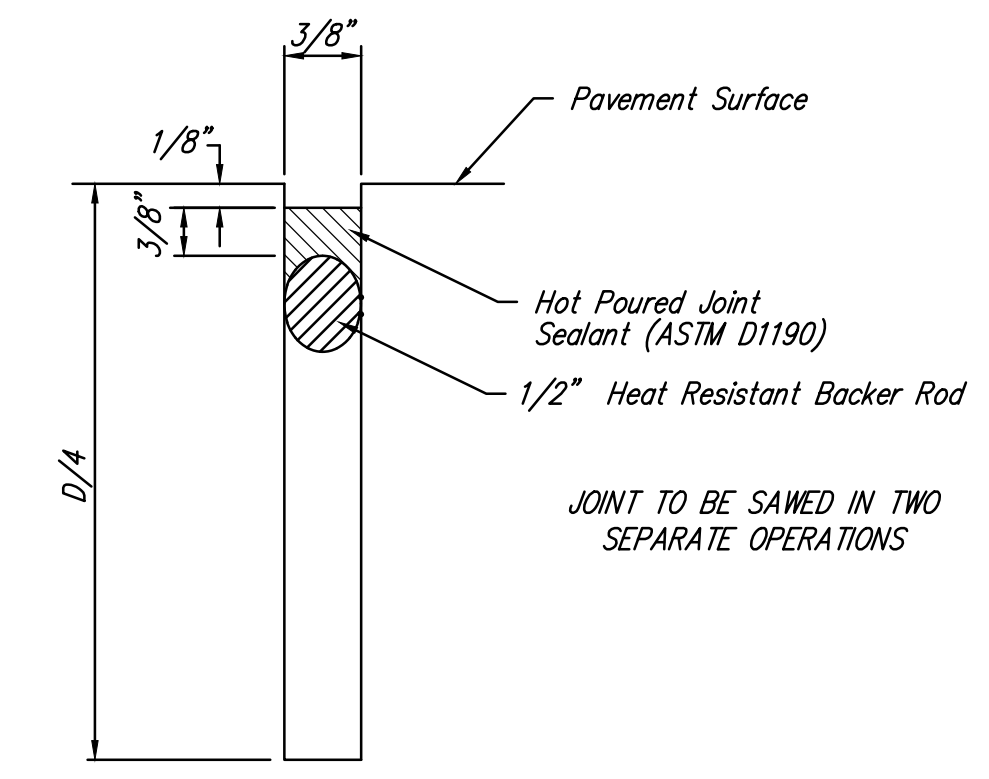
TYPE 1 COMBINED CURB & GUTTER (6")



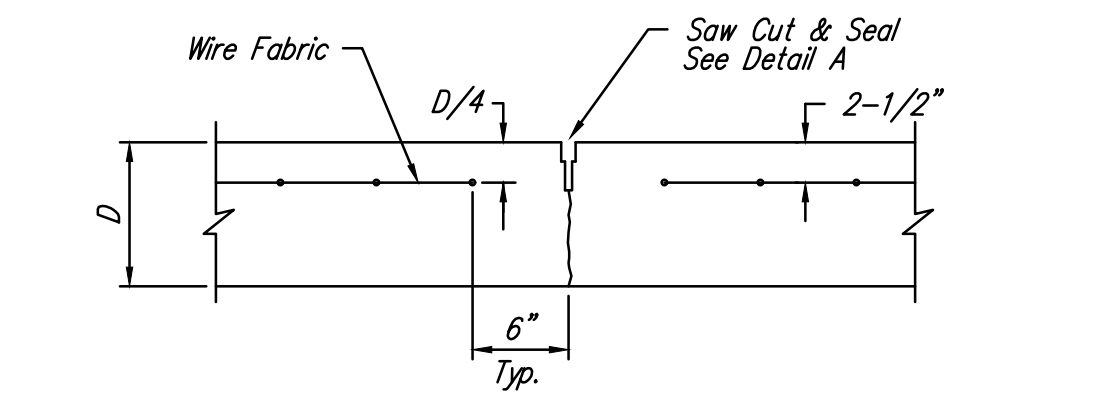
OPTIONAL CONTRACTION JOINT (CONSTRUCTION JOINT)



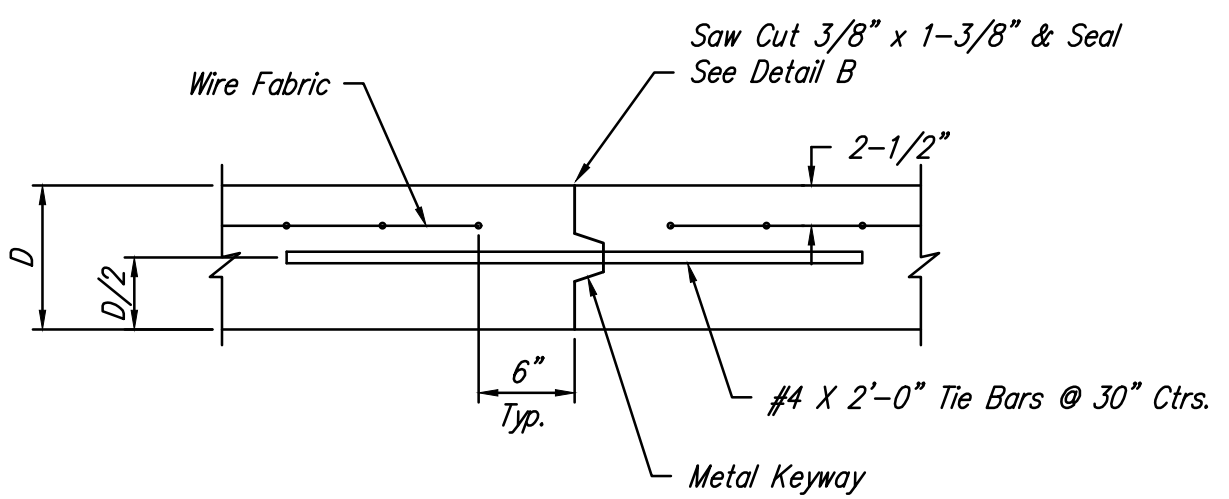
SAW JOINT DETAIL "A"



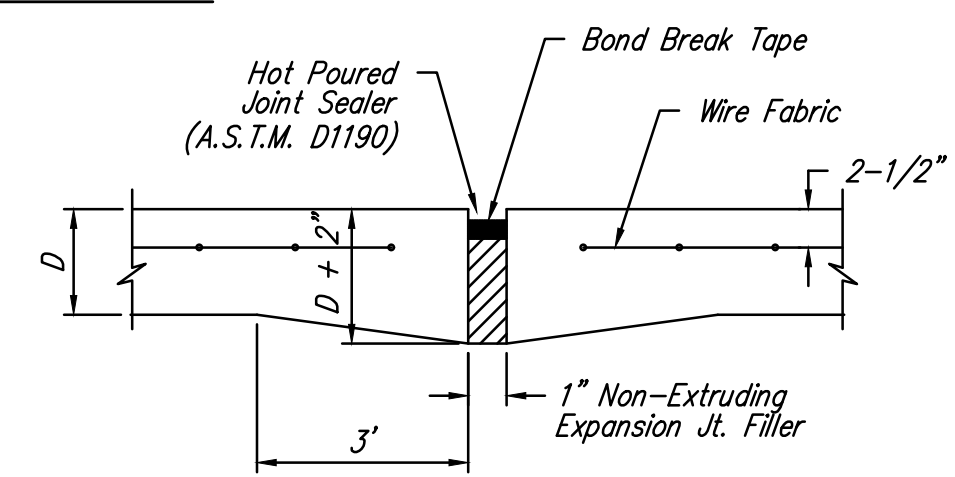
SAW JOINT DETAIL "B"



CONTRACTION JOINT DETAIL (C.J.)



OPTIONAL LONGITUDINAL JOINT DETAIL (L.J.) (CONSTRUCTION JOINT)



EXPANSION JOINT

NOTE: Extra Thickness to be Subsidiary to Price of Square Yards Pavement

Drawing File: E:\Projects\Fairmount Park Water & Sewer\Fairmount Base.dwg (WM Table)
 Design: TPV
 Drawn: STAFF
 Approved: TPV
 Scale: NOTED

Baughman Company, P.A.
 315 Ellis St. Wichita, KS 67211 P 316-262-7271 F 316-262-0149
 ENGINEERING | SURVEYING | PLANNING | LANDSCAPE ARCHITECTURE

