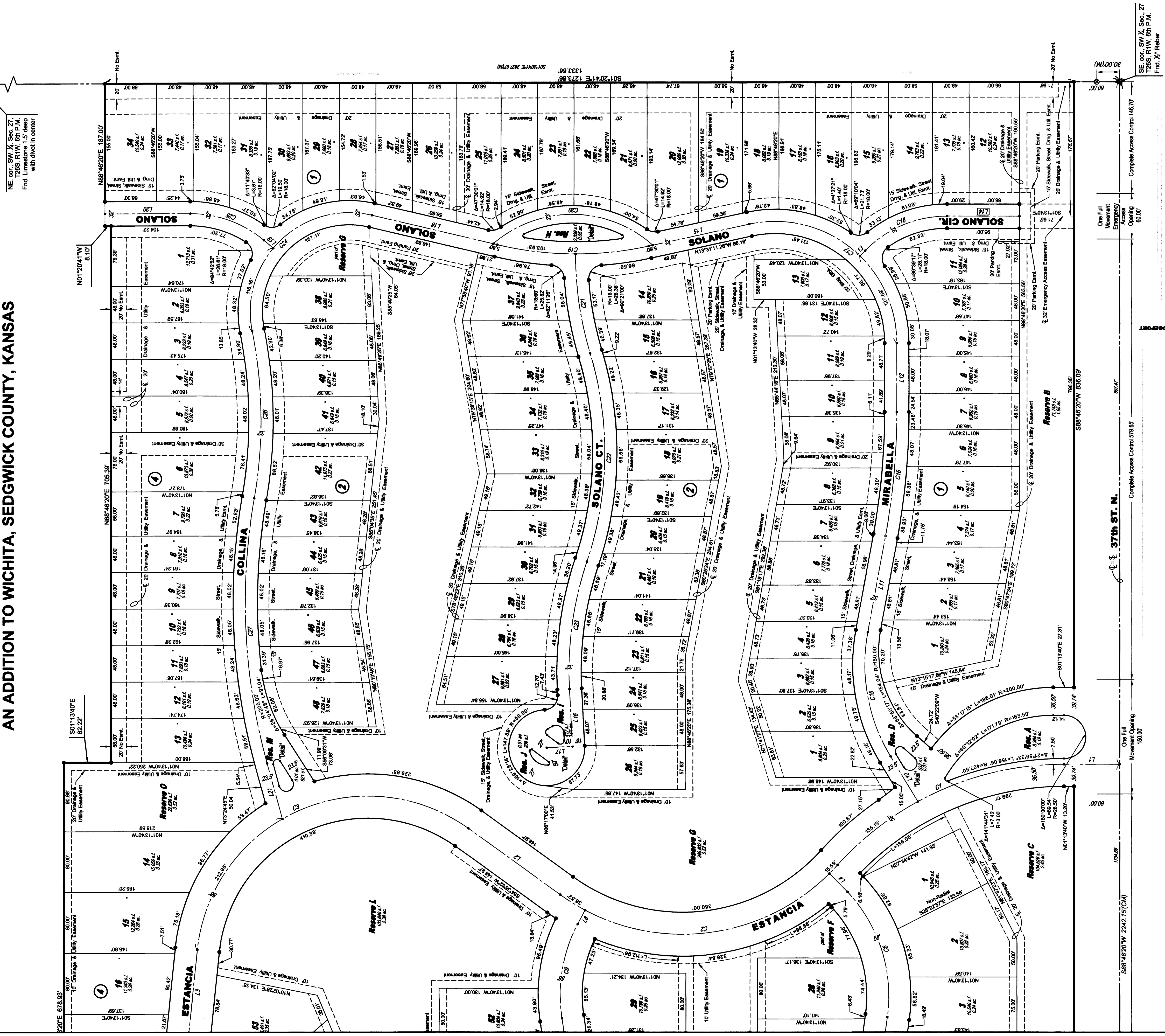


FINAL PLAT

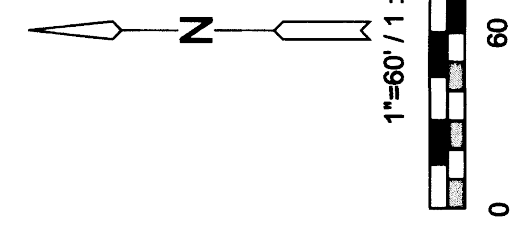
ESTANCIA ADDITION

AN ADDITION TO WICHITA, SEDGWICK COUNTY, KANSAS



NE 1/4 SW 1/4 Sec. 27, T26S R1W 6th P.M. Frd. Limestone 1.5' deep with diolot in center

SE cor., SW 1/4, Sec. 27, T26S, R1W, 6th P.M. Frd. 1/2 Rebar

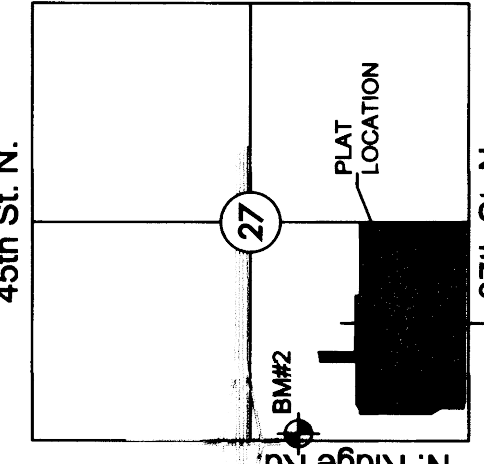


LEGEND

Date of Survey: April 29, 2015

- △ = Section corner monument found
- ⊗ = Found 3/4 rebar w/ MKEC CLS 39 ft. cap
- = Set 3/4 rebar w/ MKEC CLS 39 ft. cap
- (M) = Measured
- (CM) = Calculated from measured
- (D) = Described
- ⊕ = Benchmark
- U.E. = Utility Easement
- D.E. = Drainage Easement

R1W
45th St. N.



VICINITY MAP

MINIMUM PAD ELEVATIONS (LOWEST AREAS)	
LOTS	BLOCK ELEVATION (MAD 88)
1-48	2 1334.1
5, 6, 13, 14, 4	1334.1

BENCHMARK

BM#5 Square cut top of curb on west side of median island and 10 feet north of the south end of said median lying south of K-96 and Ridge Rd. being 338 feet S. of the NW corner SW 1/4, Sec. 27, T26S, R1W, 6th P.M.) Elev. = 1335.00 NAD83

Basis of Bearing: Kansas coordinate system of 1983 south zone grid bearing of N88°46'20"E on the south of the SW 1/4, Sec. 27, T26S, R1W, 6th P.M.
This plat is surveyed and platted on NAD83 using Kansas state plane south zone coordinates, modified to the surface, having a combined adjustment scale factor of 1.00020014401728

