

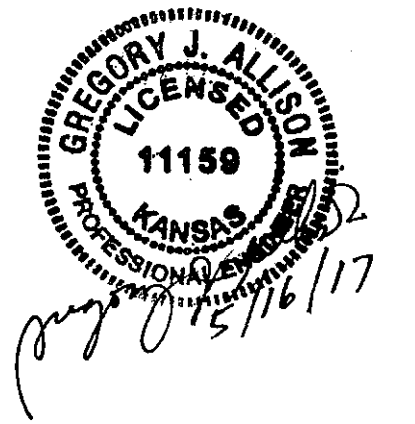
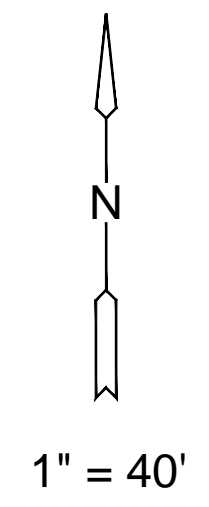
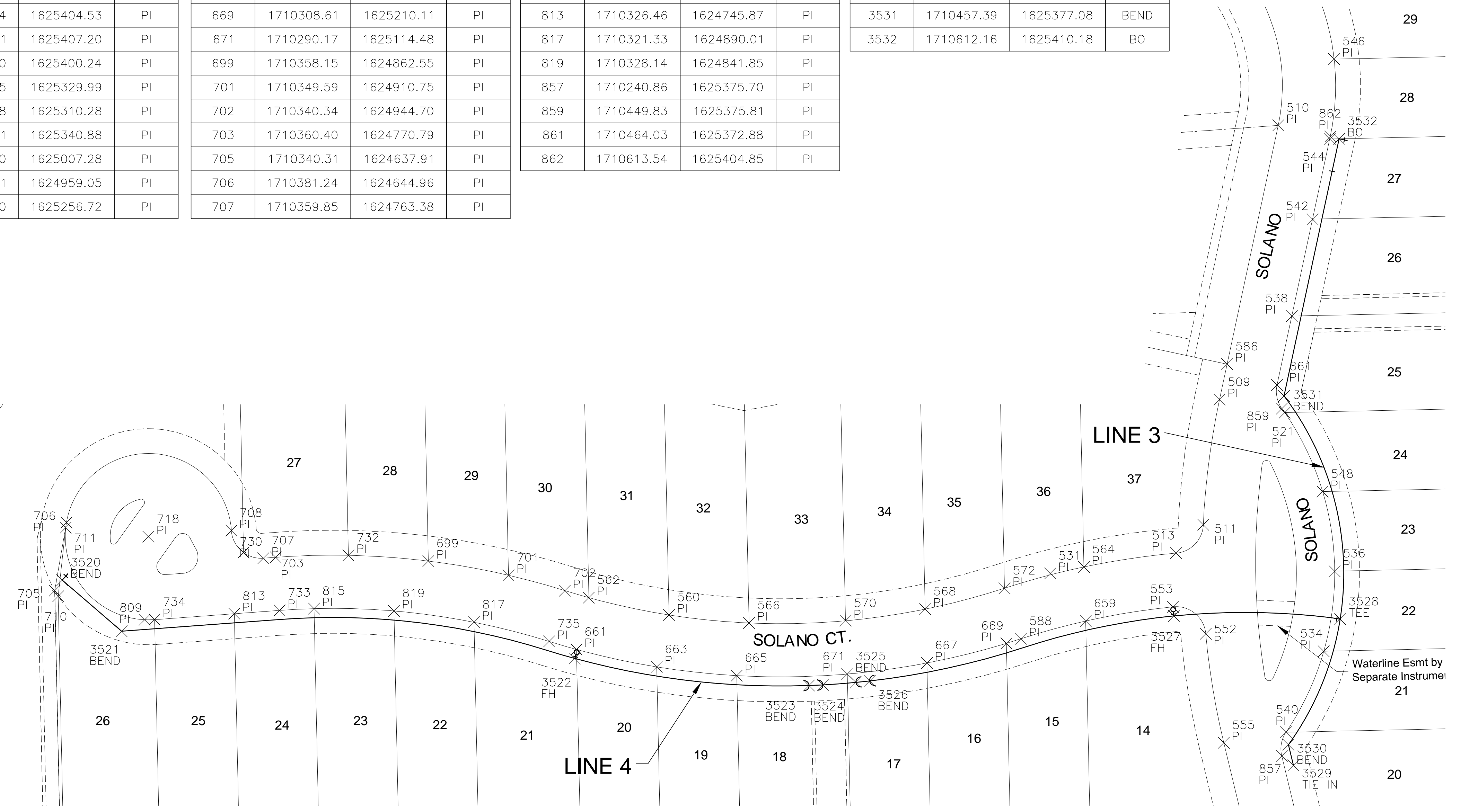
J:\PROJECTS\2017\1401010482 - PREMIER ESTANCIA\DWG\CIVIL\CA\DWG\RESIDENTIAL\PH2\14482_RES_02_P2R.DWG
 PLOTTED: Tuesday, May 16, 2017 @ 11:5AM

PLAT POINTS			
Point #	Northing	Easting	Desc.
509	1710455.21	1625338.27	PI
510	1710620.23	1625373.56	PI
511	1710379.97	1625328.49	PI
513	1710362.90	1625312.10	PI
521	1710447.42	1625377.49	PI
531	1710350.70	1625236.47	PI
534	1710303.89	1625400.94	PI
536	1710352.04	1625407.47	PI
538	1710505.53	1625381.75	PI
540	1710255.13	1625378.27	PI
542	1710563.81	1625394.22	PI
544	1710612.04	1625404.53	PI
546	1710660.11	1625407.20	PI
548	1710399.90	1625400.24	PI
552	1710314.35	1625329.99	PI
553	1710330.58	1625310.28	PI
555	1710248.81	1625340.88	PI
560	1710325.70	1625007.28	PI
562	1710336.11	1624959.05	PI
564	1710354.60	1625256.72	PI

PLAT POINTS			
Point #	Northing	Easting	Desc.
566	1710320.88	1625055.40	PI
568	1710329.20	1625161.24	PI
570	1710322.20	1625113.38	PI
572	1710341.80	1625208.98	PI
586	1710476.59	1625342.84	PI
588	1710311.38	1625218.90	PI
659	1710322.09	1625257.83	PI
661	1710304.96	1624951.62	PI
663	1710294.48	1624999.86	PI
665	1710289.21	1625047.98	PI
667	1710296.80	1625162.35	PI
669	1710308.61	1625210.11	PI
671	1710290.17	1625114.48	PI
699	1710358.15	1624862.55	PI
701	1710349.59	1624910.75	PI
702	1710340.34	1624944.70	PI
703	1710360.40	1624770.79	PI
705	1710340.31	1624637.91	PI
706	1710381.24	1624644.96	PI
707	1710359.85	1624763.38	PI

PLAT POINTS			
Point #	Northing	Easting	Desc.
708	1710376.47	1624744.09	PI
710	1710336.95	1624639.99	PI
711	1710378.24	1624644.53	PI
718	1710372.77	1624694.23	PI
729	1710519.08	1624748.08	PI
730	1710363.27	1624751.42	PI
732	1710361.59	1624814.47	PI
733	1710328.49	1624773.16	PI
734	1710322.90	1624697.93	PI
735	1710309.80	1624935.13	PI
809	1710322.77	1624691.94	PI
813	1710326.46	1624745.87	PI
817	1710321.33	1624890.01	PI
819	1710328.14	1624841.85	PI
857	1710240.86	1625375.70	PI
859	1710449.83	1625375.81	PI
861	1710464.03	1625372.88	PI
862	1710613.54	1625404.85	PI

WATER POINTS			
Point #	Northing	Easting	Desc.
3520	1710346.66	1624642.44	BEND
3521	1710315.92	1624678.12	BEND
3522	1710299.54	1624950.61	FH
3523	1710283.26	1625091.43	BEND
3524	1710283.63	1625099.72	BEND
3525	1710285.12	1625119.66	BEND
3526	1710285.99	1625127.92	BEND
3527	1710325.11	1625310.83	FH
3528	1710323.18	1625410.81	TEE
3529	1710235.25	1625382.70	TIE IN
3530	1710247.61	1625379.73	BEND
3531	1710457.39	1625377.08	BEND
3532	1710612.16	1625410.18	BO



CONTROL POINTS

- CP #100
5/8" rebar with MKEC Aluminum Cap
N = 1709596.07 E = 1624178.12 Elev. = 1334.38
South side of 37th Street N., West of entrance drive to Mid Kansas Pediatric Association at address 6837 W 37th St N.
36 feet NW of fire hydrant
6 feet south of south edge of asphalt
 - CP #101
5/8 inch rebar with MKEC Aluminum Cap
N = 1709656.12 E = 1625269.09 Elev. = 1331.35'
North side of 37th St. N
5 feet north of north edge of asphalt
On extended line to the north with the centerline of Ridgeport Street
 - CP #102
5/8 inch rebar with MKEC Aluminum Cap
N = 1710347.41' E = 1622982.67' Elev. = 1330.50
East Ridge Road in flowline of ditch
45 feet northwest of 3rd powerpole north of 37th Street N
- Horizontal and Vertical Datum:
Horizontal Datum: Kansas Coordinate System 1983 South Zone.
(Horizontal coordinates modified to ground using a scale factor of 1.000120014)
Vertical Datum: NAVD 88

EVERY ATTEMPT HAS BEEN MADE TO INSURE ALL COORDINATE VALUES SHOWN ARE AN ACCURATE AND TRUE REPRESENTATION OF THE CURRENT PLANS. ALL VALUES ARE TO BE CONFIRMED WITH THE FINAL SIGNED PLAN SET BEFORE USE.



PRIVATE WATER DISTRIBUTION PLANS FOR
ESTANCIA ADDITION
 PHASE 2

©2017 MKEC Engineering All Rights Reserved www.mkec.com
 These drawings and their contents, including, but not limited to, all concepts, designs, & ideas are the exclusive property of MKEC Engineering (MKEC), and may not be used or reproduced in any way without the express consent of MKEC.

BUBBLE MAP 2 OF 2

PROJECT NO.	448-90694	
DATE	MAY 2017	
SCALE	1" = 40'	
DESIGNED	DRAWN	CHECKED
DFL	RWB	GJA
NO.	REVISION	DATE