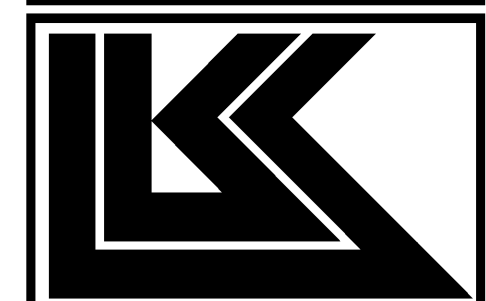


FHWA REGION NO.	STATE	PROJECT NUMBER	FISCAL YEAR	SHEET NUMBER	TOTAL SHEETS
7	KANSAS	TE-0254-01	2005	12	21
FED. AID NO.					

PRINTS ISSUED		
DATE	ITEM	NO.
1/10/05	FIELD CHECK SET	
6/13/05	OFFICE CHECK SET	
9/29/05	REVISED OFFICE CHECK	
11/29/05	FINAL PLANS	
1/22/07	FOR CONSTRUCTION	



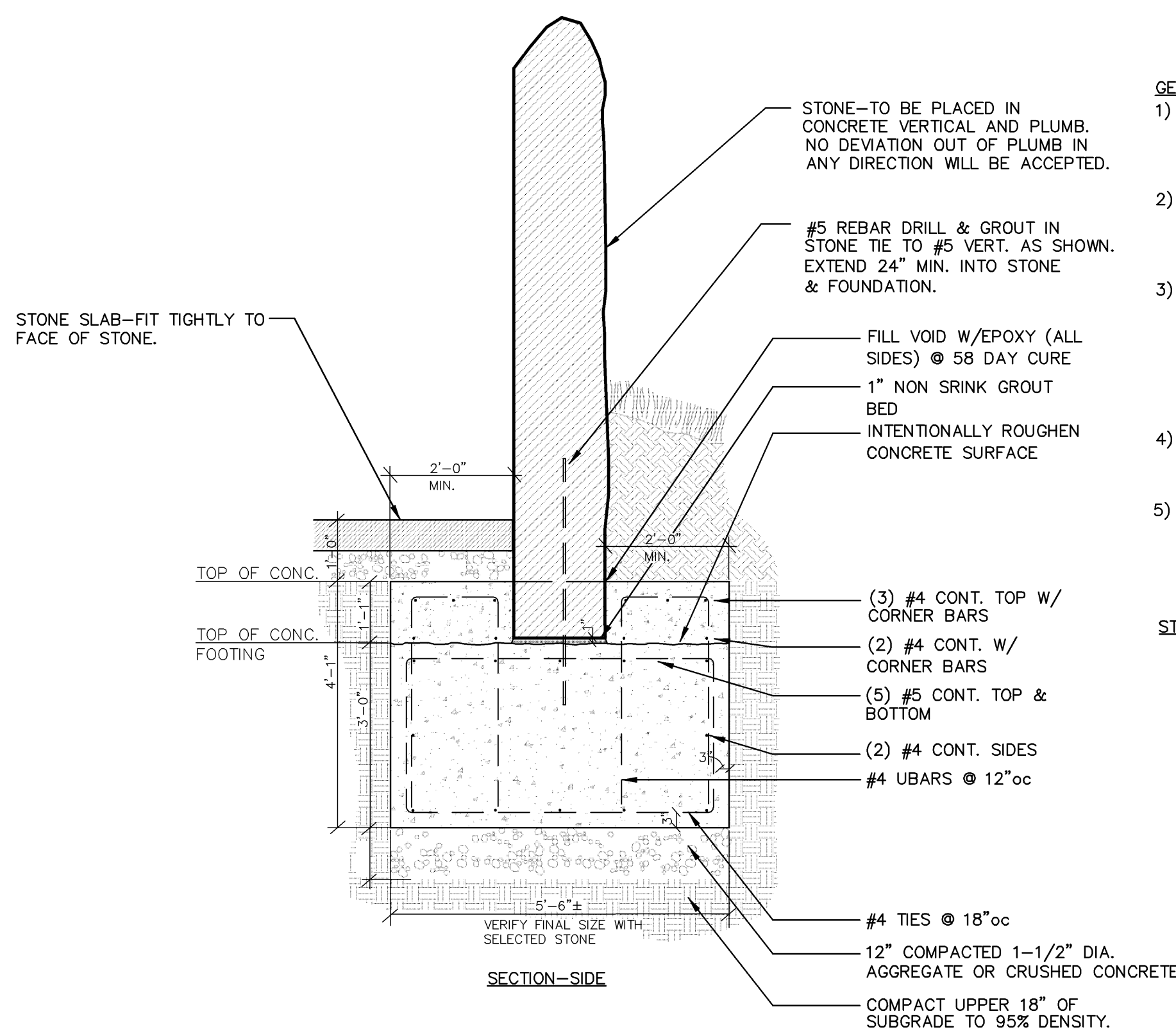
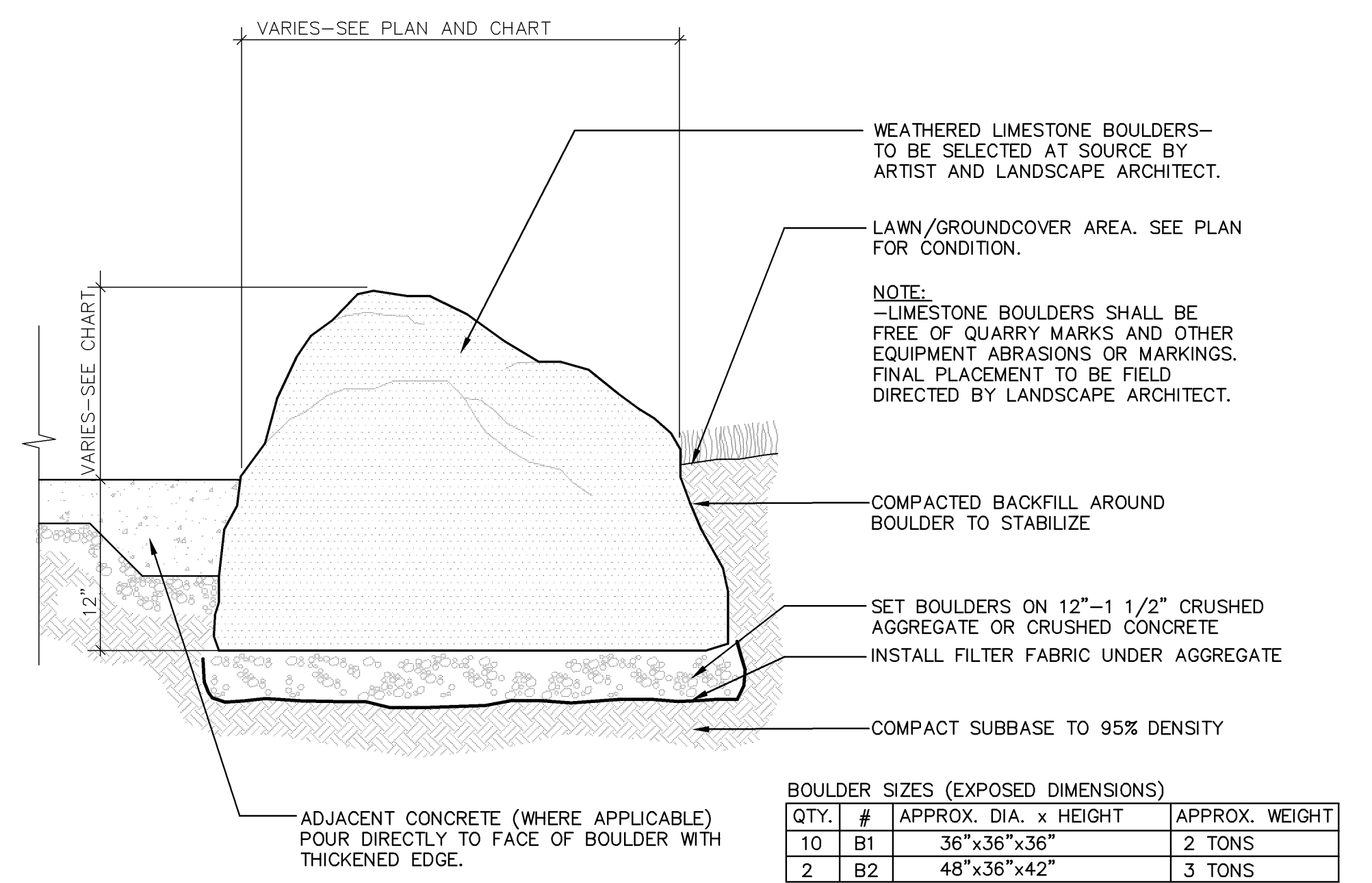
LAW/KINGDON, INC.
 ARCHITECTS ENGINEERS PLANNERS
 LANDSCAPE ARCHITECTS
 345 RIVERVIEW #200, WICHITA, KS 67203
 Phone (316) 268-0230 Fax (316) 268-0205
 Copyright © 2007

DRAWN	CHECKED
JAB	JAB

K-96 TRAILHEAD LANDSCAPE PROJECT
 WICHITA, KANSAS
 GROVE PARK

PROJECT NUMBER 044150

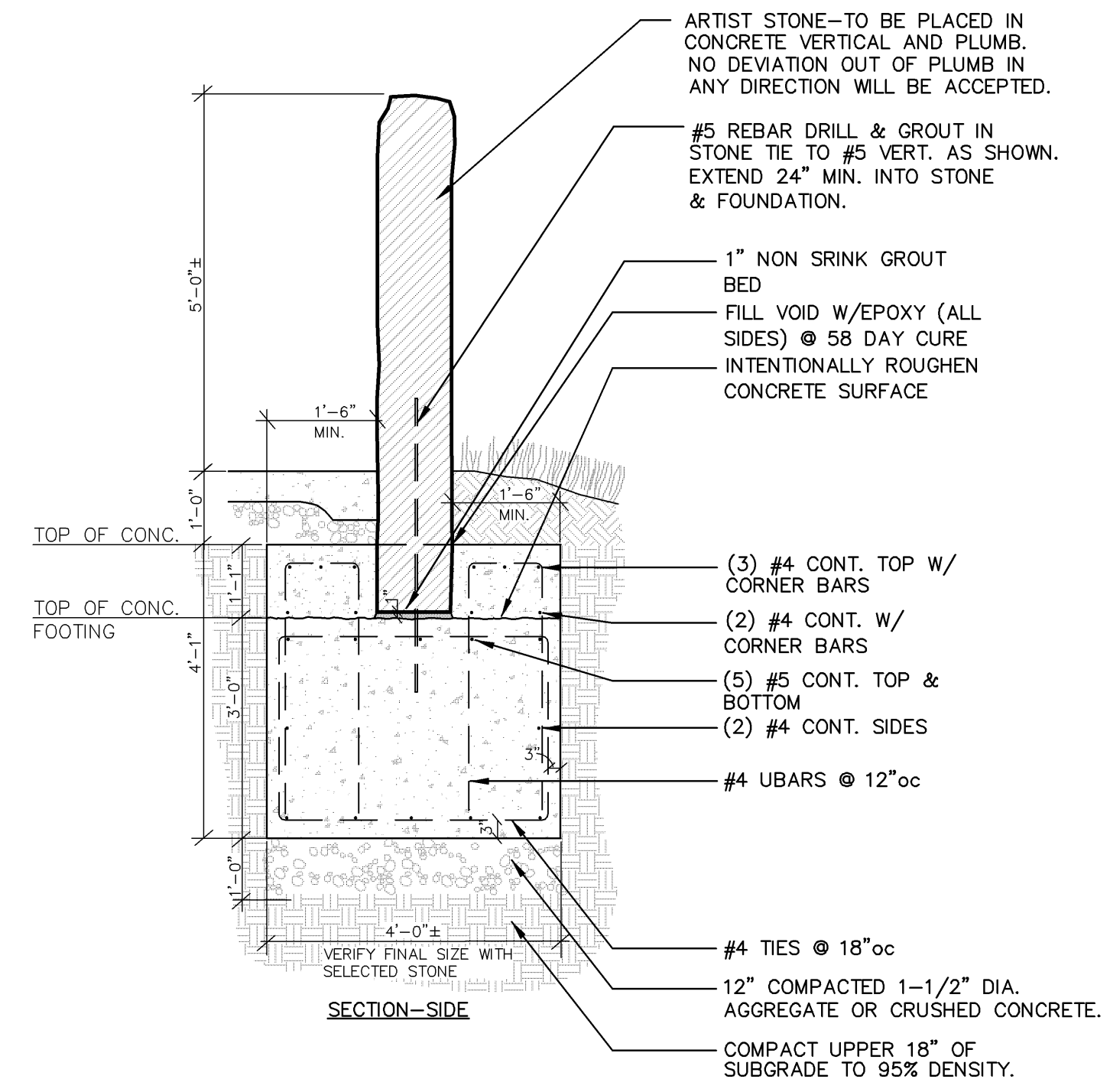
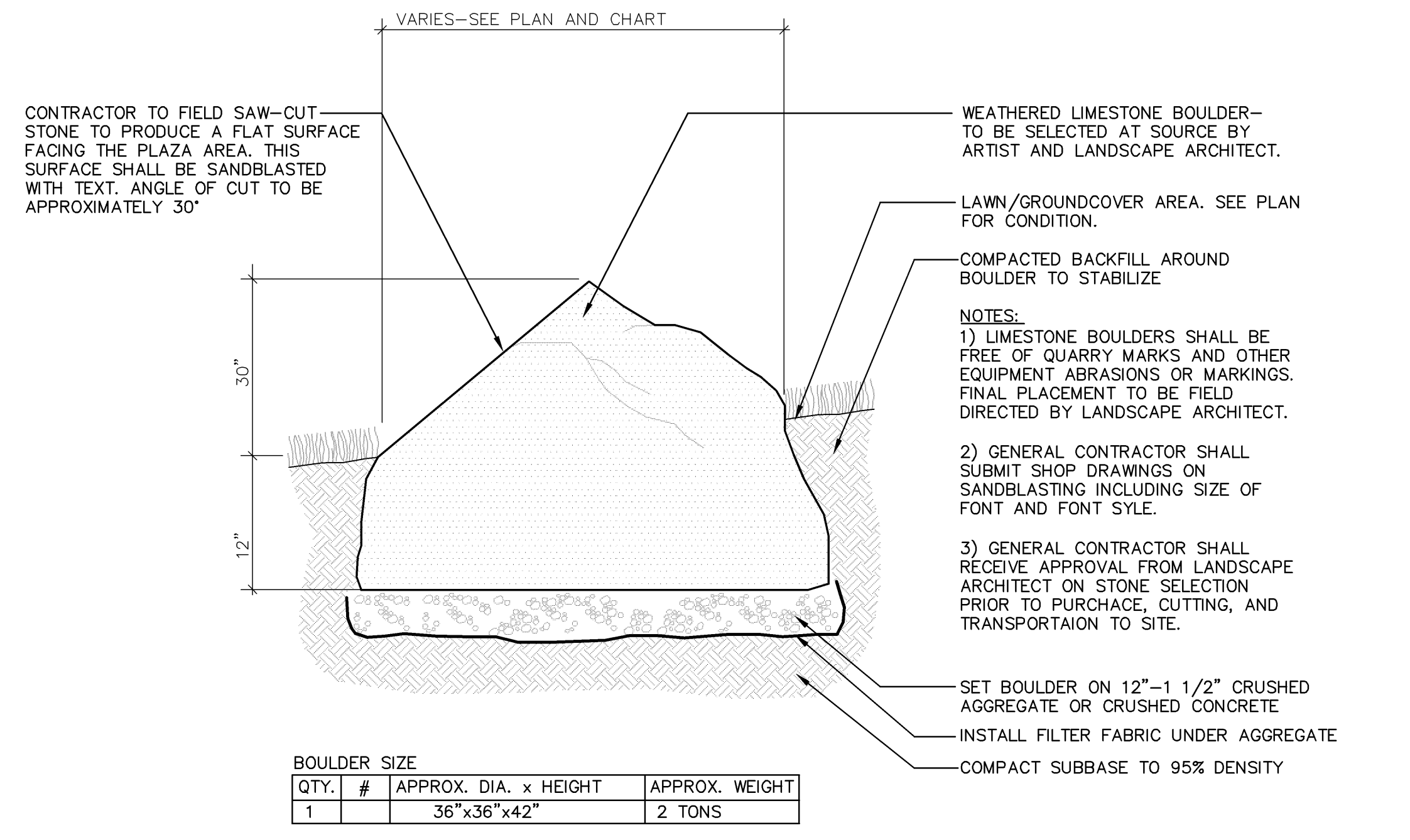
SITE DETAILS
 SHEET TITLE
 SHEET NUMBER
SA3.2
 OF 2 SHEETS



- GENERAL NOTES:**
- 1) FOOTINGS TO BE INSTALLED IN TWO (2) SEPARATE INSTALLATIONS. INITIAL FOOTING TO BE 2" THICK ON PREPARED BASE. FINAL FOOT OF CONCRETE TO BE PLACED WITH STONE INSTALLATION.
 - 2) STONE TO BE PLACED PLUMB IN A VERTICAL POSITION. STABILIZE THE STONES DURING CONCRETE CURING SO THAT THE STONE CANNOT BE MOVED OUT OF PLUMB POSITION.
 - 3) SUPPORT STONE USING LUMBER FRAMING IN SUCH A WAY AS TO ENSURE THE STONE WILL REMAIN IN A PLUMB POSITION. REMOVE FRAME ONLY AFTER APPROVAL FROM OWNER AND LANDSCAPE ARCHITECT. IF MOSAIC STONE IS FOUND TO BE OUT OF PLUMB, THE STONE SHALL BE REMOVED FROM FOOTING, CLEANED, AND RESET IN A NEW FOOTING.
 - 4) IF STONE IS GREATER IN SIZE THAN THAT SHOWN IN THIS DETAIL, CONSULT LANDSCAPE ARCHITECT TO DETERMINE IF INCREASED FOOTING DIMENSIONS ARE NECESSARY.
 - 5) CONCRETE FOOTING: WIDTH: 9"x5'-6"x4'-1" (7.5 cy) CONCRETE TO BE 3500psi REBAR TO BE GRADE 60
- STONE:**
 LIMESTONE STONE
 SIZE: 10'x18'x5' APPROXIMATE WEIGHT: 6 TONS
- FINAL STONE TO BE SELECTED AT THE QUARRY BY THE ARTIST CONSULTANT & LANDSCAPE ARCHITECT.
- *ARTIST* SHALL BE RESPONSIBLE FOR THE PURCHASE OF THE STONE SLAB. THE GENERAL CONTRACTOR SHALL BE RESPONSIBLE FOR DELIVERY AND INSTALLATION.

3 LARGE ARTIST STONE FOUNDATION

(TYPICAL 1 LOCATION) 1/2" = 1'-0"



- GENERAL NOTES:**
- 1) FOOTINGS TO BE INSTALLED IN TWO (2) SEPARATE INSTALLATIONS. INITIAL FOOTING TO BE 3" THICK ON PREPARED BASE. FINAL FOOT OF CONCRETE TO BE PLACED WITH STONE INSTALLATION.
 - 2) STONES TO BE PLACED PLUMB IN A VERTICAL POSITION. STABILIZE THE STONES DURING CONCRETE CURING SO THAT THE STONE CANNOT BE MOVED OUT OF PLUMB POSITION.
 - 3) SUPPORT STONES USING LUMBER FRAMING IN SUCH A WAY AS TO ENSURE THE STONE WILL REMAIN IN A PLUMB POSITION. REMOVE FRAME ONLY AFTER APPROVAL FROM OWNER AND LANDSCAPE ARCHITECT. IF MOSAIC STONE IS FOUND TO BE OUT OF PLUMB, THE STONE SHALL BE REMOVED FROM FOOTING, CLEANED, AND RESET IN A NEW FOOTING.
 - 4) IF STONE IS GREATER IN SIZE THAN THAT SHOWN IN THIS DETAIL, CONSULT LANDSCAPE ARCHITECT TO DETERMINE IF INCREASED FOOTING DIMENSIONS ARE NECESSARY.
 - 5) CONCRETE FOOTING: WIDTH: 7"x4'x4'-1" (4.25 cy) CONCRETE TO BE 3500psi REBAR TO BE GRADE 60
- STONE:**
 LIMESTONE STONES
 SIZE: 7'x12'x4' APPROXIMATE WEIGHT: 2.25 TONS
- FINAL STONE TO BE SELECTED AT THE QUARRY BY THE ARTIST CONSULTANT & LANDSCAPE ARCHITECT.
- *ARTIST* SHALL BE RESPONSIBLE FOR THE PURCHASE OF THE STONE SLAB. THE GENERAL CONTRACTOR SHALL BE RESPONSIBLE FOR DELIVERY AND INSTALLATION.

4 SMALL ARTIST STONE FOUNDATION

(TYPICAL 4 LOCATIONS) 1/2" = 1'-0"

1 LIMESTONE BOULDER

1" = 1'-0"

2 BROKEN STONE BOULDER

1" = 1'-0"