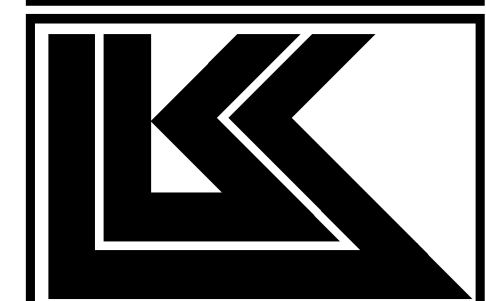


FHWA REGION NO.	STATE	PROJECT NUMBER	FISCAL YEAR	SHEET NUMBER	TOTAL SHEETS
7	KANSAS	TE-0254-01	2005	13	21
FED. AID NO.					

PRINTS ISSUED		
DATE	ITEM	NO.
1/10/05	FIELD CHECK SET	
6/13/05	OFFICE CHECK SET	
9/29/05	REVISED OFFICE CHECK	
11/29/05	FINAL PLANS	
1/22/07	FOR CONSTRUCTION	



LAW/KINGDON, INC.  
ARCHITECTS ENGINEERS PLANNERS  
LANDSCAPE ARCHITECTS  
345 RIVERVIEW #200 WICHITA, KS 67203  
Phone (316) 268-0230 Fax (316) 268-0205  
Copyright © 2007

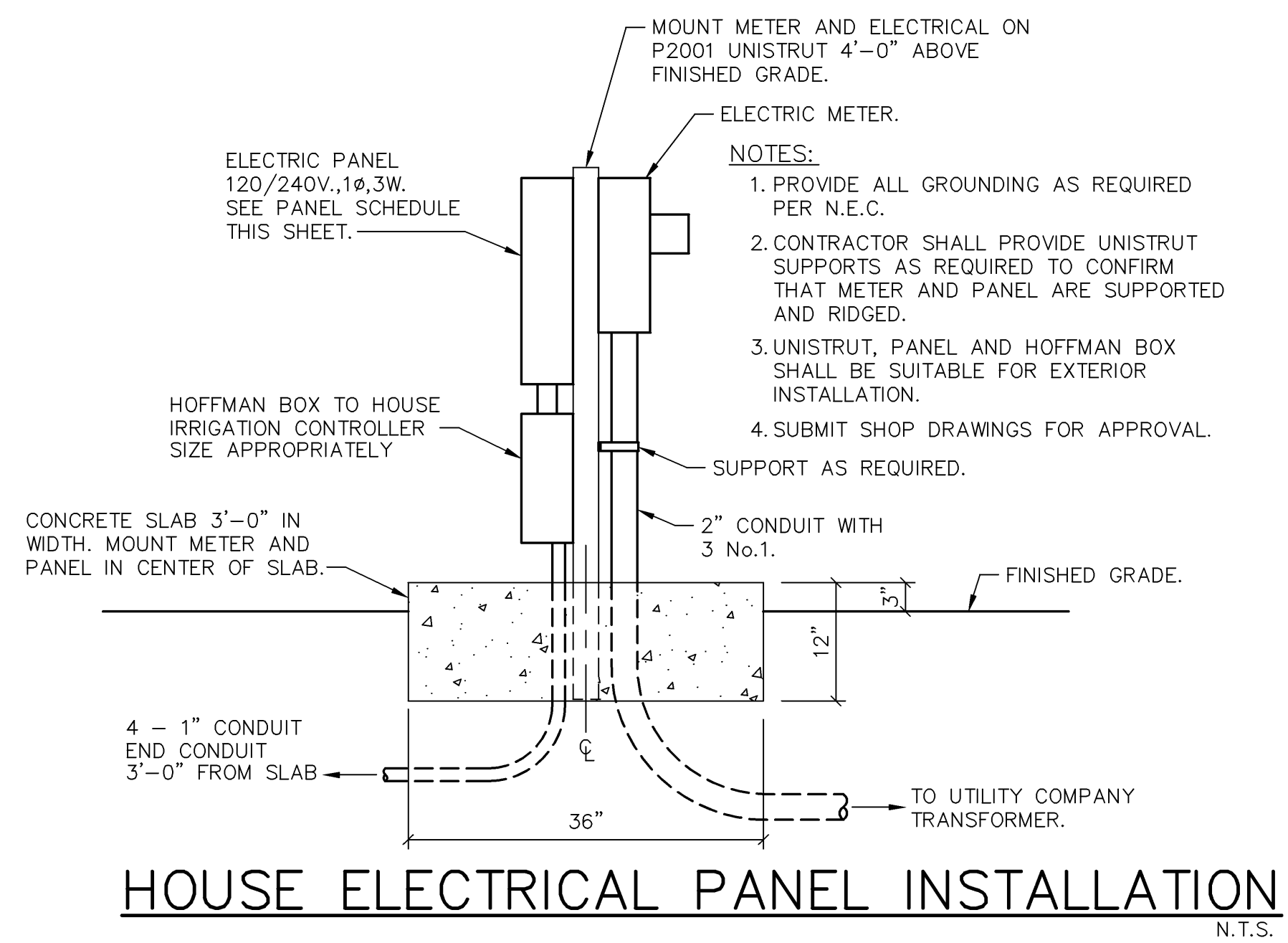
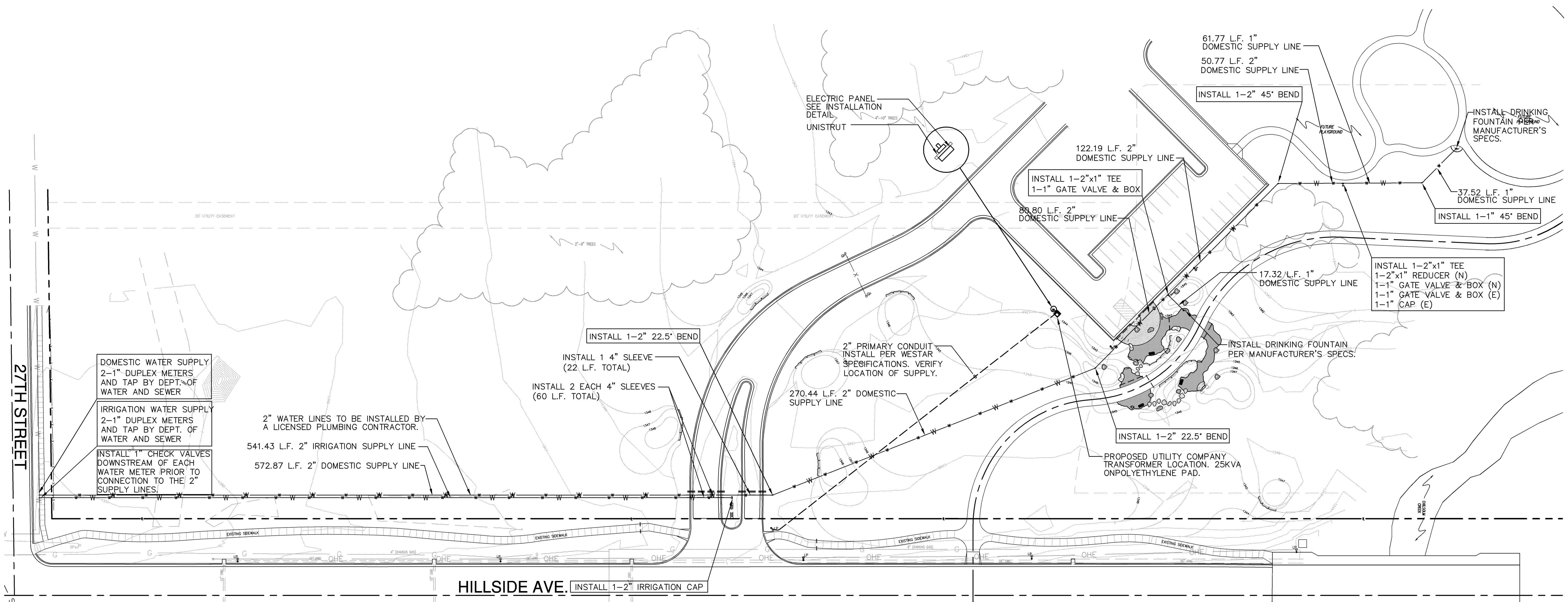
DRAWN	CHECKED
JAB	JAB TR

**K-96 TRAILHEAD LANDSCAPE PROJECT**  
 WICHITA, KANSAS  
 GROVE PARK

PROJECT NUMBER 044150

SITE UTILITY PLAN  
SHEET TITLE  
SHEET NUMBER  
**SU1.1**  
OF 1 SHEETS

**Ruggles & Bohm, P.A.**  
Engineering, Surveying, Land Planning  
824 North Main (316) 264-8008  
Wichita, Kansas 67203 (316) 264-4821 fax  
www.rtkansas.com E-mail: info@rtkansas.com



WITH GROUND BUS		PANEL _____		SURFACE MOUNTED	
TYPE	NEMA-3R NOOD	120/240 V 1 Ø 3 W, SN	Ø A Ø B Ø C	AMP/KVA	DESCRIPTION
1	SITE IRRIGATION	.2	20	20	SPARE
3	SPARE	-	20	20	SPARE
5	SPARE	-	20	20	SPARE
7	SPARE	-	20	20	SPARE
9	SPACE ONLY	-	20	20	SPACE ONLY
11	SPACE ONLY	-	20	20	SPACE ONLY
13	SPACE ONLY	-	20	20	SPACE ONLY
15	SPACE ONLY	-	20	20	SPACE ONLY
17	SPACE ONLY	-	20	20	SPACE ONLY
19	SPACE ONLY	-	20	20	SPACE ONLY
21	SPACE ONLY	-	20	20	SPACE ONLY
23	SPACE ONLY	-	20	20	SPACE ONLY

- SITE ELECTRICAL NOTES:**
1. CONTRACTOR SHALL VISIT THE SITE PRIOR TO BID AND HIMSELF WITH THE SCOPE OF WORK AND EXISTING CONDITIONS. QUESTIONS CONCERNING THE JOB SHALL BE DIRECTED TO FAILURE TO COORDINATE REQUIREMENTS WILL IN NO WAY COORDINATE REQUIREMENTS WILL IN NO WAY RESULT IN ADDITIONAL COMPENSATION BEING PROVIDED TO THE CONTRACTOR.
  2. ALL CONDUIT, CABLE SHEATH, METER ENCLOSURES AND EQUIPMENT SHALL BE GROUNDED IN ACCORDANCE WITH THE REQUIREMENTS OF THE NEC AND WESTAR.
  3. THE CONTRACTOR SHALL PROVIDE ALL TRENCHING, CONDUIT, AND BACKFILLING AND MEET ALL ELECTRICAL UTILITY REQUIREMENTS. VERIFY WITH WESTAR THE INSTALLATION OF THE TRANSFORMER PAD.
  4. CAP ALL CONDUITS AT BOTH ENDS TO KEEP FREE OF DIRT AND DEBRIS. INSTALL PULL LINE AND SECURE BOTH ENDS.
  5. THE CONTRACTOR SHALL BE RESPONSIBLE FOR BACKFILLING TRENCHES AND SITE RESTORATION. THE SELECT BACKFILL MATERIAL MUST NOT CONTAIN ANY SHARP OR FOREIGN OBJECTS. IN ROCKY GROUND LOCATIONS, SEE WESTAR STANDARDS. THE POWER CO. WILL NOT ENERGIZE CONDUCTOR UNTIL THE CONTRACTOR COMPLETES BACKFILL TO WESTAR SATISFACTION.
  6. THE CONTRACTOR SHALL INCLUDE IN THE BID ALL WESTAR UTILITY REQUIREMENTS TO PROVIDE ELECTRIC SERVICE TO THE PROJECT SITE. FAILURE TO COORDINATE REQUIREMENTS WILL IN NO WAY RESULT IN ADDITIONAL COMPENSATION BEING PROVIDED TO THE CONTRACTOR.
  7. THE CONTRACTOR SHALL COORDINATE ALL UNDERGROUND LOCATIONS WITH OTHER TRADES PRIOR TO ANY DIGGING BEING DONE.