

GENERAL NOTES:

1. Contractor will be required to provide notice to utility companies a minimum of Forty-Eight (48) hours prior to any excavation, as follows:

Kansas One-Call 687-2470

The Contractor must notify the following in case of an emergency:

Cox Communications 262-4270
 Kansas Gas Service 1-888-482-4950
 Westar Energy 383-8650
 Aquila Energy 1-800-303-0357
 AT&T 268-2245
 City of Wichita Water Dept. 268-4563
 City of Wichita Sewer Maint. 268-4024
 City of Wichita Storm Sewer Maint. 268-4090
 City of Wichita Traffic Maint. 268-4034

2. Utility service lines, poles, valve boxes, meters, and etcetera are to be adjusted as necessary by others prior to construction unless the plans specifically call for their adjustment by the Contractor or unless the plans specifically identify a utility to be adjusted by its owner during construction. Existing utilities and their location, as shown on the plans, represent the best information obtainable for design. The Contractor will be required to work around existing utilities within the right-of-way which do not conflict with proposed construction.

3. All excess material from channel excavation shall be stockpiled within 500 feet west or south of the extents of channel construction at a location to be determined by the engineer. Stockpile shall be seeded with Rye Grass at 5 lbs./1000 sq. ft. and surrounded with silt fencing (≈3500 L.F.).

4. Trees and shrubs in public right-of-way which are in direct conflict with proposed new construction shall be removed by the Contractor with the Engineer's approval. Trees and shrubs which are not in direct conflict with proposed new construction shall be saved and protected from damage.

5. The Contractor shall be responsible for preserving property irons. The Contractor will be required to re-establish any property irons which are damaged or destroyed by his construction operations. Such irons shall be re-established by a licensed land surveyor in accordance with state laws.

6. At conclusion of construction, an as-built survey will be completed by the engineer. The contractor will be required to finish and smooth grade all locations as necessary that are not within ±0.3' of plan grade. The contractor shall include all costs associated with the regrading and/or remobilization in the bid item "Channel Excavation."

7. All existing and proposed erosion control measures including silt fencing, erosion control mat, straw bales, inlet barriers, and const. entrance shall be maintained throughout construction by the contractor and until project is accepted by the City of Wichita. The on-site engineer shall complete weekly reports on the status of erosion control measures. The contractor shall be required to comply with maintenance and/or replacement of erosion control measures as determined by the on-site engineer until project is accepted by City of Wichita.

8. The Contractor shall protect traffic by use of proper and necessary flags, lights, signals, barricades or other warning devices as needed, all in accordance with the latest edition of the Manual On Uniform Traffic Control Devices, U.S. Department of Transportation, Federal Highway Administration. Cost to be included in lump sum bid item "Traffic Control."

9. All areas disturbed during construction shall be seeded, mulched, and fertilized as follows (Permanent Seeding):

Seed: Kansas Premium Fescue Blend: 8 lbs./1000 sq. ft.
 Annual Rye Grass: 2 lbs./1000 sq. ft.
 Mulch: Prairie Hay: 2 tons/acre (no mulch required in areas where Erosion Control Matting is installed)
 Fertilizer: 12-24-12: 850 lbs./acre

All costs associated with seeding, mulching, and fertilizing shall be included in bid item "Project Seeding." All seeding operations shall conform to City of Wichita Standard Specifications.

10. Best available topsoil shall be stripped and stockpiled separately. Channel bottom and side slopes shall be overexcavated 9" and replaced with 9" of best available topsoil. Topsoil shall be compacted to a minimum of 90% Standard Proctor Density. Cost of overexcavation is incidental to Lump Sum Bid Item "Channel Excavation."

11. Abandoned dewatering wells will be encountered during construction of the channel. Contractor shall cut or break well pipe at least 2 feet below proposed grade. All costs associated with cutting or breaking dewatering wells shall be included in "Site Clearing and Restoration."

11. See Special Provisions for Required Construction Completion Date and related Incentives/Damages.

STORM WATER DRAIN #307 to serve NORTHGATE ADDITION & UNPLATTED TRACT "B"

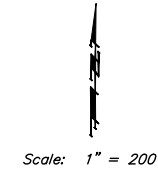
CITY OF WICHITA, KANSAS
James L. Armour, P.E. City Engineer

Project Number
468-84253

O.C.A. Number
751445

Sheet Index

Title Sheet	1
Channel Plan	2-7
RCBC Plan	8
Const. Phasing & Shoo-fly Plan	9
Traffic Control Detail	10
RCBC Details	11-14
Handrail Details	15
Erosion Control BMP's	16-19
Channel Cross Sections	20,21
Coordinate Sheet	22



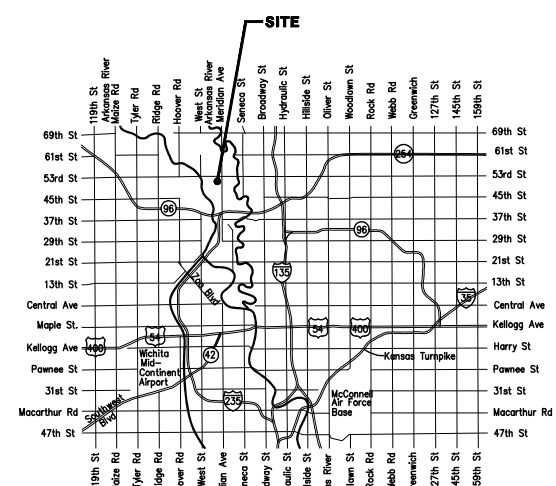
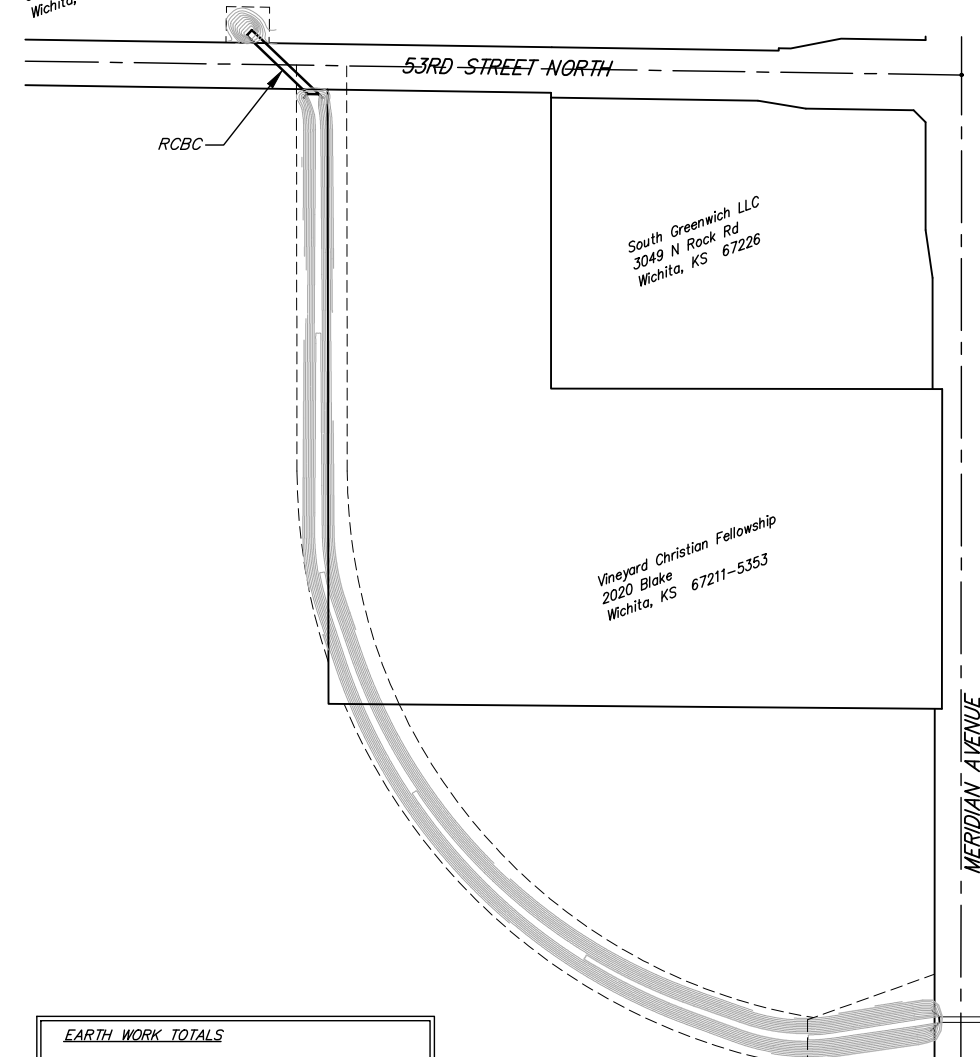
Benchmark

COW Benchmark at the intersection of Meridian and 53rd St N, NE Corner Top of Concrete Headwall.
 44' North of Centerline
 37' East of Centerline
 50.90' NE of Section Corner
 9' NE of and radial to curb
 26' East of Section Line
 Elev. = 1331.37 NGVD29

COW Benchmark at the intersection of Meridian and Keywest, NW Corner, 59' West of Centerline
 32.3' North of Centerline
 11.8' North of N curb line of Keywest
 4.8' NW of center of Power Pole
 Elev. = 1329.36 NGVD29



R & R Realty LLC
 Bldg. 1000
 8100 E 22nd St N
 Wichita, KS 67226-2310



Vicinity Map

EARTH WORK TOTALS		
	C.Y. Excavation	C.Y. Fill
Channel Grading	34,094	-

Earthwork quantities are unadjusted and are for reference only. All cost shall be incidental to "Channel Excavation".



CBB Northlakes LLC
 4647 N Meridian
 Wichita, KS 67204-2401

Baughman
 Baughman Company, P.A. 315 Ellis St. Wichita, KS 67211 P 316-262-7271 F 316-262-0149
 ENGINEERING | SURVEYING | PLANNING | LANDSCAPE ARCHITECTURE

March 2007