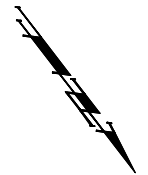


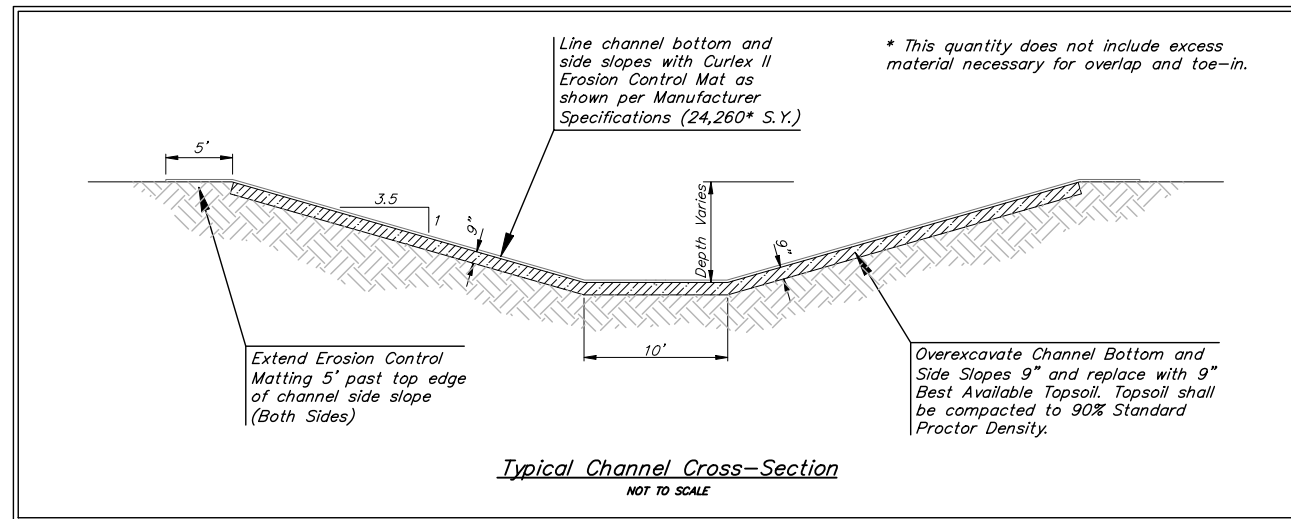
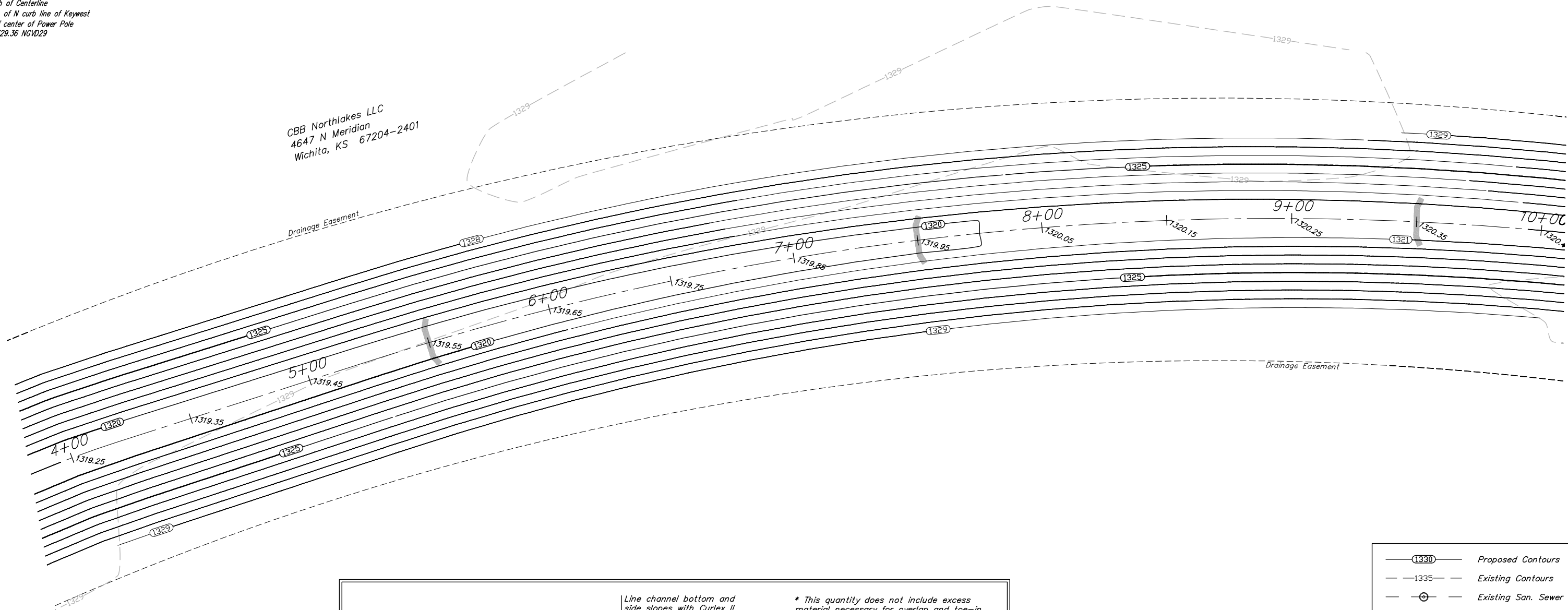
COW Benchmark at the Intersection
of Meridian and 53rd St N, NE Corner,
Top of Concrete Headwall.
44' North of Centerline
37' East of Centerline
50.90' NE of Section Corner
9' NE of and radial to curb
26' East of Section Line
Elev. = 1331.37 NGVD29

COW Benchmark at the intersection
of Meridian and Keywest, NW Corner,
59' West of Centerline
32.3' North of Centerline
11.8' North of N curb line of Keywest
4.8' NW of center of Power Pole
Elev. = 1329.36 NGVD29



Scale: 1" = 20'

CBB Northlakes LLC
4647 N Meridian
Wichita, KS 67204-2401



- Proposed Contours
- Existing Contours
- Existing San. Sewer
- Rip Rap to be installed
- Straw Bale Barriers to be installed (This Project)
- Dewatering Well (Abandoned)

EROSION CONTROL MEASURE	UNITS	QUANTITY
INSTALL STRAW BALE BARRIER	EA	3
INSTALL EROSION CONTROL MATTING	SY	24,260

QUANTITIES ARE FOR INFORMATION ONLY!
CONTRACTOR SHALL VERIFY QUANTITIES PER FINAL BID QUANTITY SHEET.

Baughman Northgate Offsite Drainage
Channel Plan
Storm Water Drain #307

Baughman Company, P.A. 315 8th St. Wichita, KS 67211 P 316-262-7271 F 316-262-0149
ENGINEERING | SURVEYING | PLANNING | LANDSCAPE ARCHITECTURE

PROJECT NUMBER 468-84253	DESIGN RDM/ABG	DRAWN RDM
REVISIONS:	APPROVED ABG	DATE 3-14-07
	SCALE Noted	SHEET

3 OF 22

Northgate\OFFSITE CHANNEL.dwg