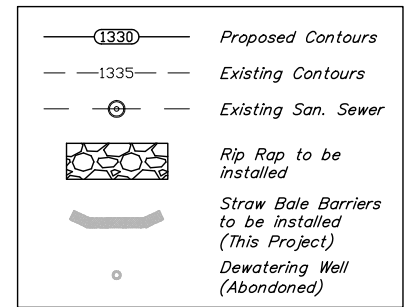
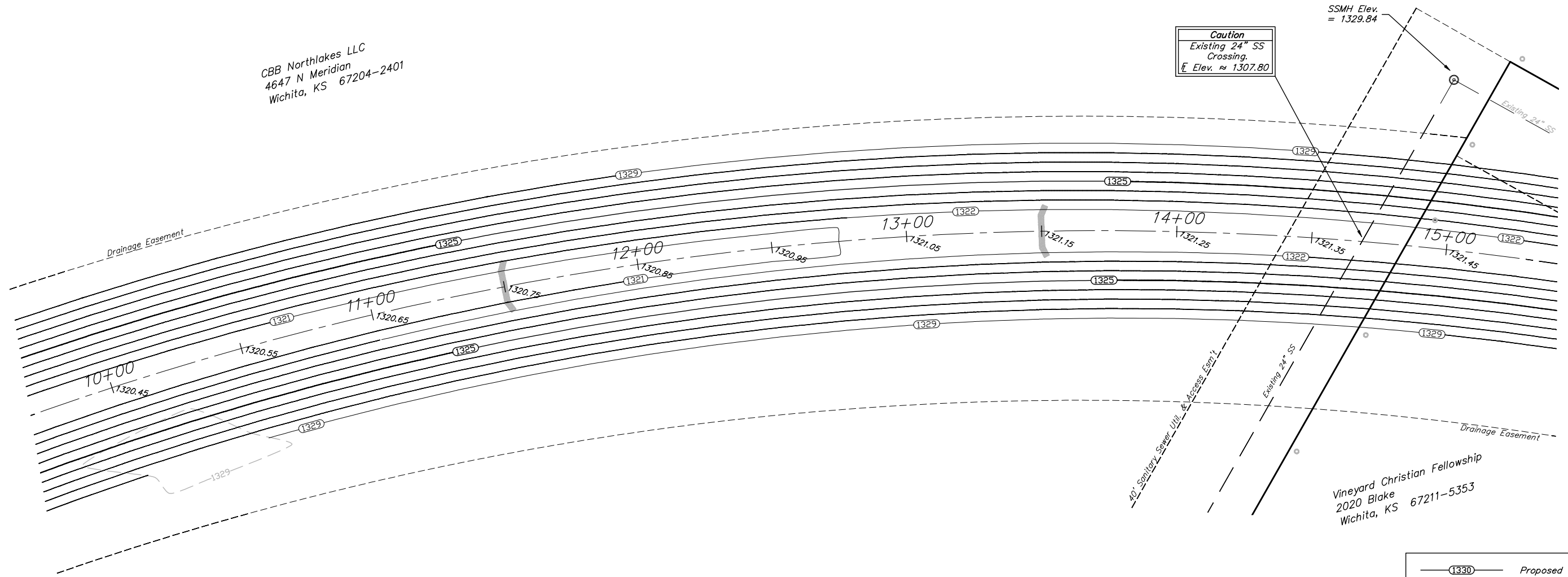


COW Benchmark at the Intersection
of Meridian and 53rd St N, NE Corner,
Top of Concrete Headwall.
44' North of Centerline
37' East of Centerline
50.90' NE of Section Corner
9' NE of and radial to curb
26' East of Section Line
Elev. = 1331.37 NGVD29

COW Benchmark at the intersection
of Meridian and Keywest, NW Corner,
59' West of Centerline
32.3' North of Centerline
11.8' North of N curb line of Keywest
4.8' NW of center of Power Pole
Elev. = 1329.36 NGVD29

CBB Northlakes LLC
4647 N Meridian
Wichita, KS 67204-2401

Scale: 1" = 20'



EROSION CONTROL MEASURE	UNITS	QUANTITY
INSTALL STRAW BALE BARRIER	EA	2

QUANTITIES ARE FOR INFORMATION ONLY!
CONTRACTOR SHALL VERIFY QUANTITIES PER
FINAL BID QUANTITY SHEET.

Baughman Northgate Offsite Drainage
Channel Plan
Storm Water Drain #307

Baughman Company, P.A. 315 8th St. Wichita, KS 67211 P 3162627271 F 3162620149
ENGINEERING | SURVEYING | PLANNING | LANDSCAPE ARCHITECTURE

PROJECT NUMBER 468-64253	DESIGN RDM/ABG	DRAWN RDM
REVISIONS:	APPROVED ABG	DATE 3-14-07
	SCALE Noted	SHEET

4 OF 22

Northgate\OFFSITE CHANNEL.dwg