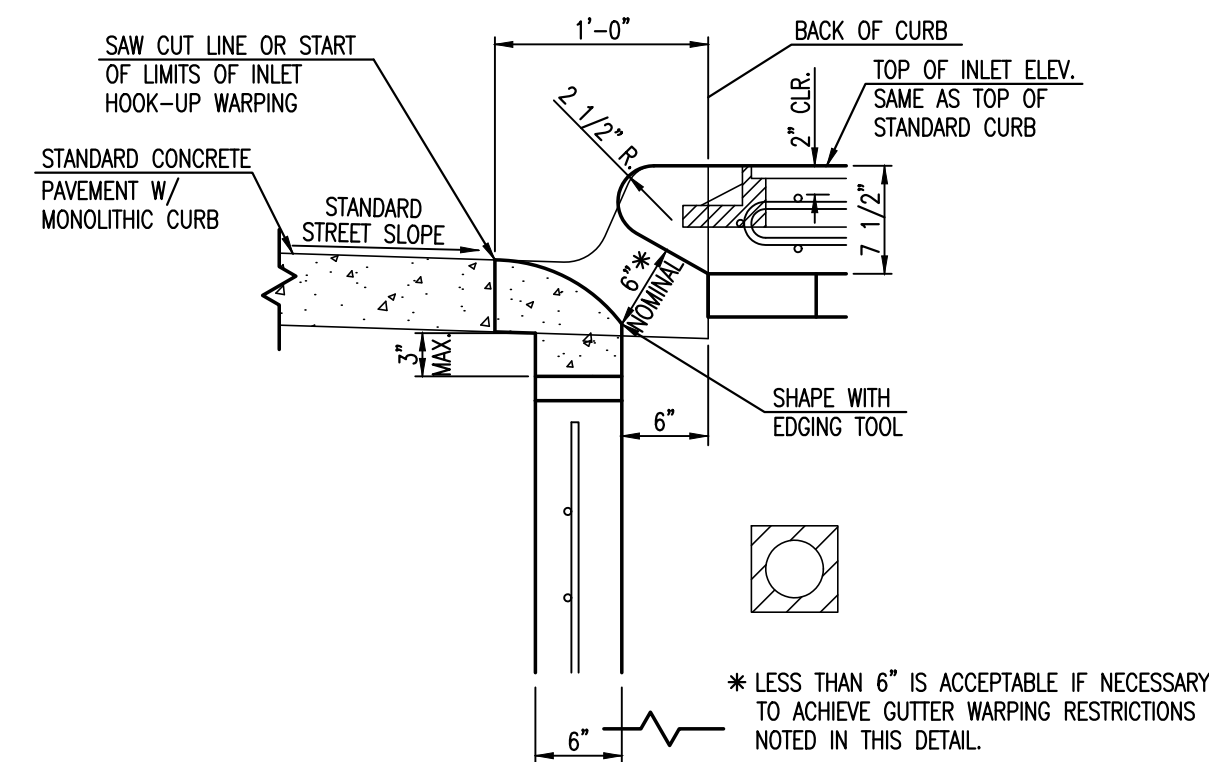


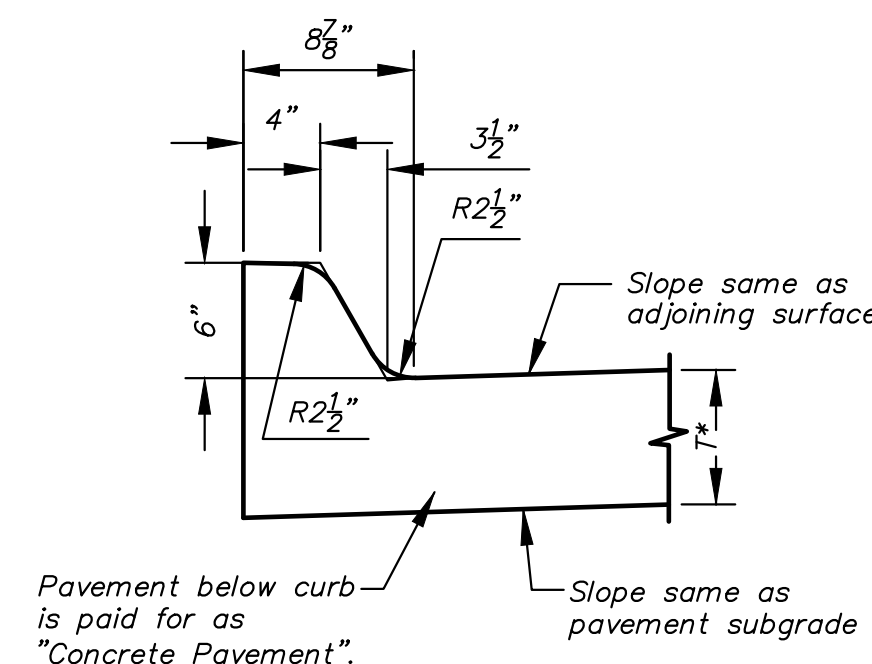
PLOTTED: Tuesday, May 02, 2017 @ 08:18PM

J:\PROJECTS\2017\150104077_COW_17TH STREET REHAB\150177_CADSHTS\06_CIVIL\PAV\17TED03.DWG

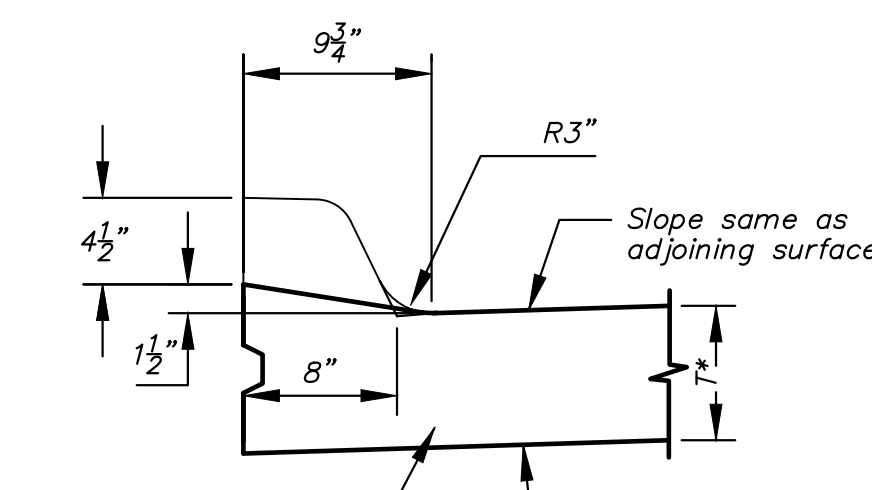


INLET HOOK-UP DETAIL

SCALE: NO SCALE



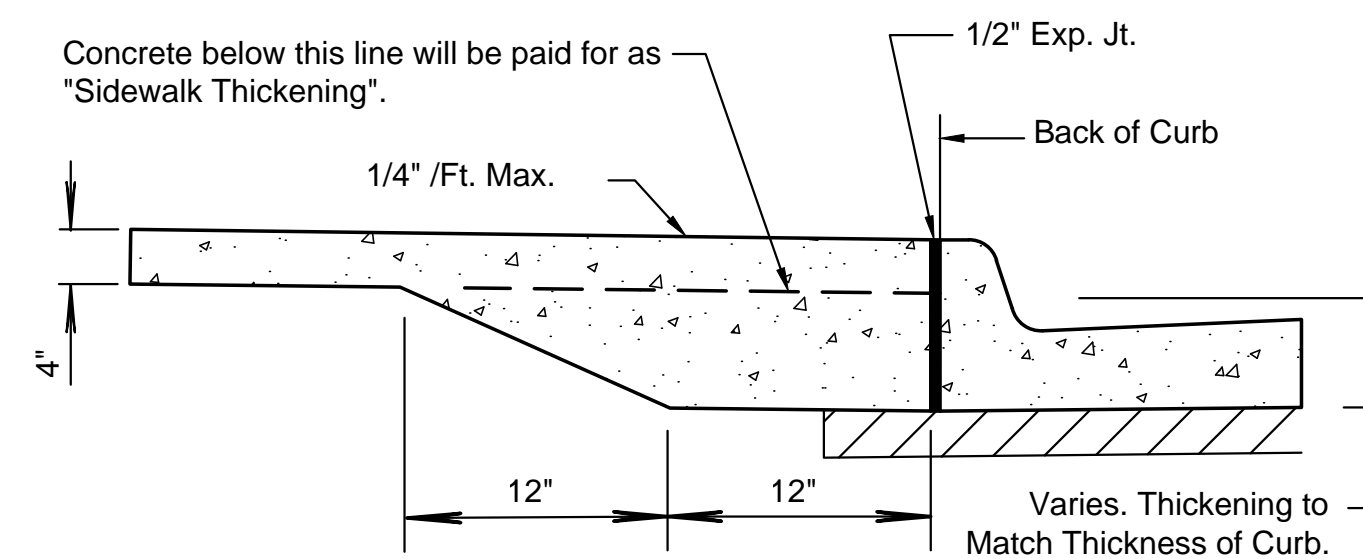
Concrete Curb, Mono Edge (6")



Concrete Curb, Mono Edge (1 1/2")

MONOLITHIC EDGE CURB

SCALE: NO SCALE

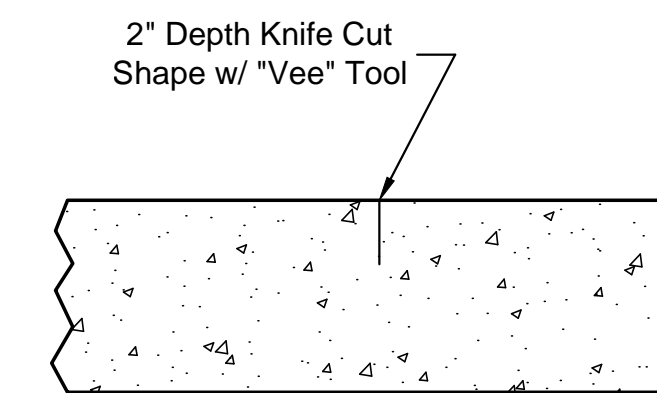


SIDEWALK THICKENING

SCALE: NO SCALE

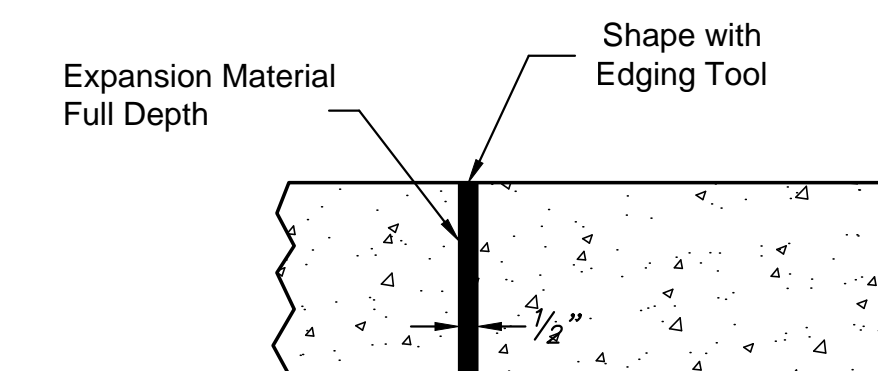
Note: All Sidewalk at Back of Curb Shall Conform to this Detail

NOTE:
Sidewalk shall always have a cross-slope of 1/4 inch per foot or less, even through driveways unless directed otherwise by the Engineer.



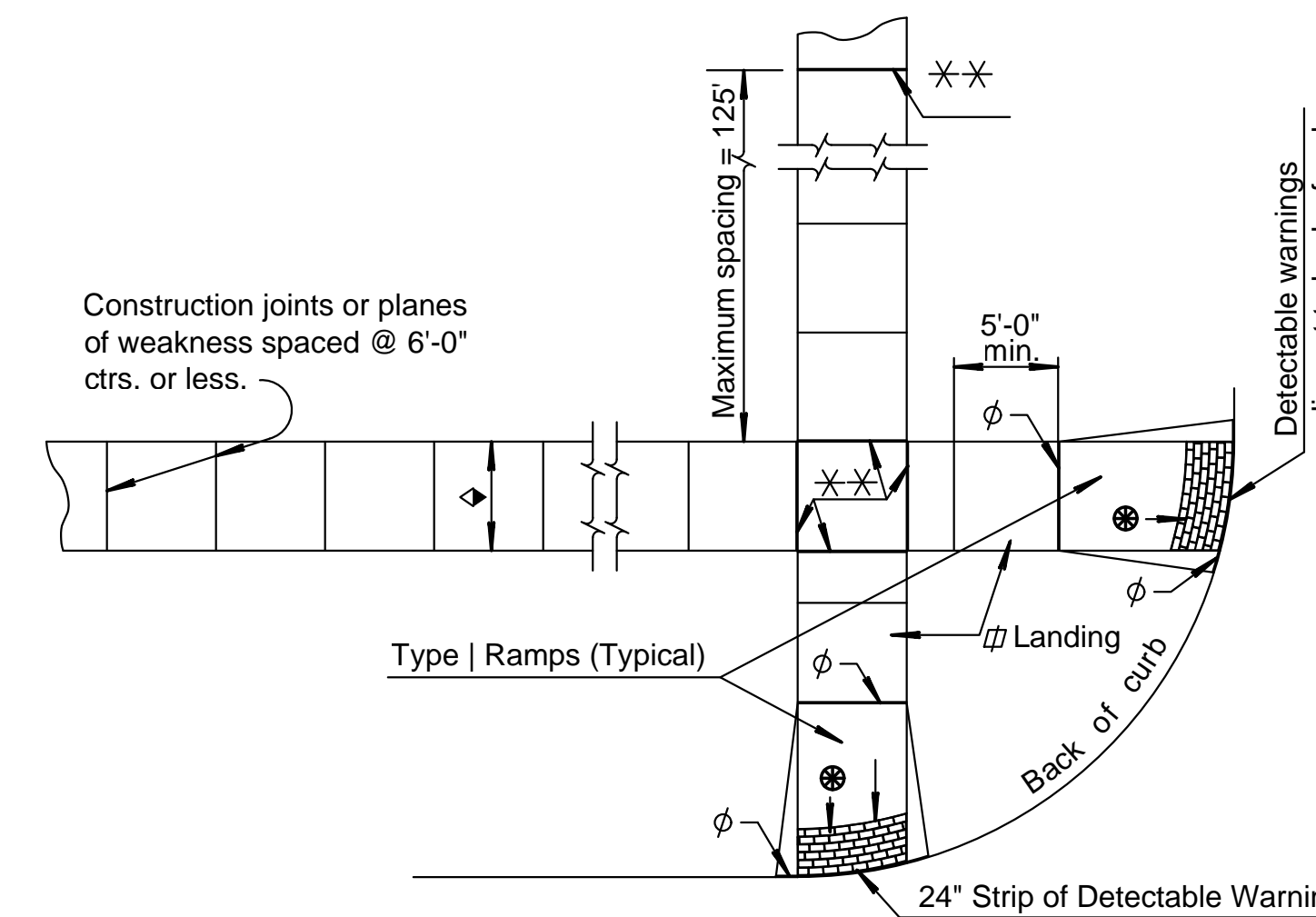
CONTRACTION JOINT (C.J.)

SCALE: NO SCALE



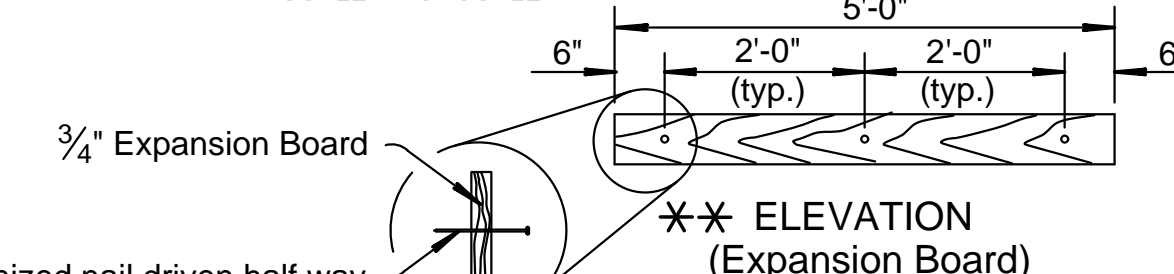
EXPANSION JOINT (E.J.)

SCALE: NO SCALE



TYPICAL SIDEWALK PLAN

SCALE: NO SCALE



For other than 5'-0" (width) use 6" from the end and balanced (3'-0" max.) nail spacing.

- φ Expansion Joint (3/4" board) placed at either back of curb line or at sidewalk back of curb line or at sidewalk line.
- * Expansion joint (3/4" board) located as shown.
- ◇ Variable width (5'-0" min.). Entrance walk to be same width as approach walk. Use sidewalk width of 4'-0" where existing conditions prohibit use of 5'-0".
- ✱ New construction ramp slopes are 12: 1 or flatter. Desirable ramp slopes for existing sites are 12: 1 or flatter. Where space limitations prohibit construction of a 12:1 slope on existing sites, use the following slopes:
8:1 or flatter for a maximum rise of 3 inches
10:1 or flatter for a maximum rise of 6 inches
- ∩ Use a landing slope of 48: 1 or flatter. Landings are the same width as ramp and a minimum 5'-0" in length.
- ∩ Use a counter slope of 20:1 or flatter at the base of sidewalk ramps. See curb and gutter detail sheet.
- ⊗ Detectable warning installation is typical and required on Sidewalk Ramps Type 1, Type 2, Type 3, median ramp crossings and other locations as shown in the plans. See ramp detail sheet.



STREET REHABILITATION FOR
17TH STREET BETWEEN HILLSIDE & OLIVER
WICHITA, KS

©2017
MKEC Engineering
All Rights Reserved
www.mkec.com
These drawings and their contents, including, but not limited to, all concepts, designs, & ideas are the exclusive property of MKEC Engineering (MKEC), and may not be used or reproduced in any way without the express consent of MKEC.

SIDEWALK & CURB DETAILS

PROJECT NO.	472-85215	
DATE	5/3/2017	
SCALE	NONE	
DESIGNED	DRAWN	CHECKED
JRA	WNJ	JRA

NO.	REVISION	DATE

SHEET NO.