

INDEX OF SHEETS

1. TITLE SHEET
2. PLAT
3. TYPICAL SECTIONS
4. PAVING PLANS-LAKE RIDGE
5. PAVING PLAN-LAKE RIDGE COURT
6. PAVING PLAN-LAKE RIDGE COURT
7. VALLEY GUTTER DETAILS
8. MISCELLANEOUS PAVING DETAILS
- 9.-12. EROSION CONTROL DETAILS
13. FOUR CORNER LOT GRADING PLAN
14. SIGNING DETAILS

CITY OF WICHITA, KANSAS

NEIL D. CABLE, P.E., CITY ENGINEER

STREET IMPROVEMENTS

LAKE RIDGE - FROM THE N.L. OF LOT 8, BLOCK 4 TO THE S.L. OF LOT 25, BLOCK 4.
LAKE RIDGE COURT - SERVING LOTS 8 THRU 17, BLOCK 4.
LAKE RIDGE COURT - SERVING LOTS 18 THRU 25, BLOCK 4.
SIDEWALK - ON THE WEST SIDE OF LAKE RIDGE FROM THE N.L. OF LOT 8, BLOCK 4 TO THE S.L. OF LOT 25, BLOCK 4.

IN

FOREST LAKES WEST-PHASE 4

CITY OF WICHITA PROJECT NO. 472-82873
OCA NO. 765787

PROJECT SURVEY CONTROL

- BM # 10 - NORTH RIM SAN. SEWER MANHOLE IN EAST SIDE LOT 35, BLOCK 4, IN FOREST LAKES ADDITION. ELEV.=156.77
- BM # 61 - CHISELED "d" ON TOP OF CURB AT SOUTH END OF MEDIAN, LAKE RIDGE STREET ON NORTH SIDE OF WEST LAKES STREET IN FOREST LAKES WEST ADDITION. ELEV.=154.11
- BM # 100 - CHISELED "d" ON CENTER, WEST EDGE OF CURB INLET, EAST SIDE OF LAKE RIDGE ST., NEAR NW CORNER LOT 16, BLOCK 3, IN FOREST LAKES WEST ADDITION. ELEV.=144.32
- BM # 101 - CHISELED "X" ON NORTH RIM SANITARY SEWER MANHOLE, EAST SIDE OF LAKE RIDGE ST., 100' ± NORTH OF CENTER LAKE RIDGE CT. (SOUTH OF 2) NEAR LOT 20, BLOCK 3, IN FOREST LAKES WEST ADDITION. ELEV.=149.52

GENERAL NOTES

UNDERGROUND UTILITY SERVICE LINES AND OVERHEAD UTILITY POLE LINES ARE TO BE ADJUSTED AS NECESSARY BY OTHERS PRIOR TO CONSTRUCTION UNLESS THE PLANS SPECIFICALLY CALL FOR THEIR ADJUSTMENT BY THE CONTRACTOR. EXISTING UTILITIES AND THEIR LOCATION, AS SHOWN ON THE PLANS, REPRESENT THE BEST INFORMATION OBTAINABLE FOR DESIGN. LOCATION INFORMATION HAS BEEN OBTAINED FROM THE VARIOUS UTILITY COMPANIES AND IS EITHER FROM COMPANY RECORD DRAWINGS OR COMPANY PROVIDED FIELD LOCATIONS. THE CONTRACTOR WILL BE REQUIRED TO WORK AROUND EXISTING UTILITIES WITHIN THE RIGHT-OF-WAY WHICH DO NOT CONFLICT WITH PROPOSED CONSTRUCTION.

TREES AND SHRUBS IN PUBLIC RIGHT-OF-WAY WHICH ARE IN DIRECT CONFLICT WITH PROPOSED NEW CONSTRUCTION SHALL BE REMOVED BY THE CONTRACTOR WITH THE ENGINEER'S APPROVAL. TREES AND SHRUBS WHICH ARE NOT IN DIRECT CONFLICT WITH PROPOSED NEW CONSTRUCTION SHALL BE SAVED AND PROTECTED FROM DAMAGE.

RUBBLE FROM THE REMOVAL OF MISCELLANEOUS STRUCTURES SHALL BE DISPOSED OF ON SITES TO BE PROVIDED BY THE CONTRACTOR AND APPROVED AS NOTED BELOW.

ALL DISPOSAL SITES MUST BE APPROVED BY THE KANSAS DEPARTMENT OF HEALTH AND ENVIRONMENT. MATERIAL EITHER STOCKPILED OR DISPOSED OF IN A FLOOD PLAIN WOULD REQUIRE A KANSAS STATE BOARD OF AGRICULTURE PERMIT. ANY MATERIAL DUMPED IN WATERS OF THE UNITED STATES OR WETLANDS IS SUBJECT TO U.S. CORPS OF ENGINEERS PERMITTING REGULATIONS. ANY MATERIAL BURIED OR STOCKPILED BEYOND APPROVED CONSTRUCTION LIMITS WOULD REQUIRE ADDITIONAL ARCHEOLOGICAL INVESTIGATIONS UNLESS BURIED IN A PREVIOUSLY APPROVED BORROW LOCATION.

CONTRACTOR SHALL SATISFY HIMSELF OF SURFACE AND SUBSURFACE CONDITIONS PRIOR TO BIDDING.

TEMPORARY SURFACING MATERIAL (ROCK, ASPHALT, ETC.) MAY HAVE BEEN PLACED WITHIN STREET RIGHTS-OF-WAY FOR HAUL ROADS AND TEMPORARY ACCESS. CONTRACTOR SHALL FIELD VERIFY EXISTING CONDITIONS TO DETERMINE EXTENT, IF ANY, OF SUCH SURFACING. CONTRACTOR SHALL REMOVE SAID TEMPORARY SURFACING IN THE SAME MANNER AS NOTED ABOVE FOR RUBBLE. THIS REMOVAL SHALL BE SUBSIDIARY TO "EXCAVATION".

CONTRACTOR SHALL PROVIDE A MINIMUM FORTY-EIGHT (48) HOUR ADVANCE NOTICE (EXCLUDING WEEKENDS AND HOLIDAYS) PRIOR TO BEGINNING ANY EXCAVATION, TO KANSAS ONE-CALL SYSTEM, A UTILITY LOCATION SERVICE, AT (316) 687-2470 TO REQUEST THE FOLLOWING UTILITY COMPANIES TO LOCATE ALL EXISTING LINES WITHIN THE PROJECT AREA: WESTAR ENERGY, SOUTHWESTERN BELL TELEPHONE, COX COMMUNICATIONS, CITY OF WICHITA SEWER MAINTENANCE AND CITY OF WICHITA WATER DEPARTMENT.

THE CONTRACTOR SHALL BE RESPONSIBLE FOR PRESERVING PROPERTY IRONS. THE CONTRACTOR WILL BE REQUIRED TO RE-ESTABLISH ANY PROPERTY IRONS WHICH ARE DAMAGED OR DESTROYED BY HIS CONSTRUCTION OPERATIONS. SUCH IRONS SHALL BE RE-ESTABLISHED BY A LICENSED LAND SURVEYOR IN ACCORDANCE WITH STATE LAWS.

THE WATER DEPARTMENT SHALL FIELD LOCATE WATER VALVES ONE TIME DURING CONSTRUCTION WHEN REQUESTED BY THE CONTRACTOR. IT SHALL BE THE CONTRACTOR'S RESPONSIBILITY TO PRESERVE SUCH FIELD LOCATIONS DURING THE CONSTRUCTION PROCESS. WATER VALVES, WATER VALVE BOXES OR FIRE HYDRANTS DAMAGED DURING CONSTRUCTION SHALL BE REPAIRED BY THE CONTRACTOR AT HIS OWN EXPENSE.

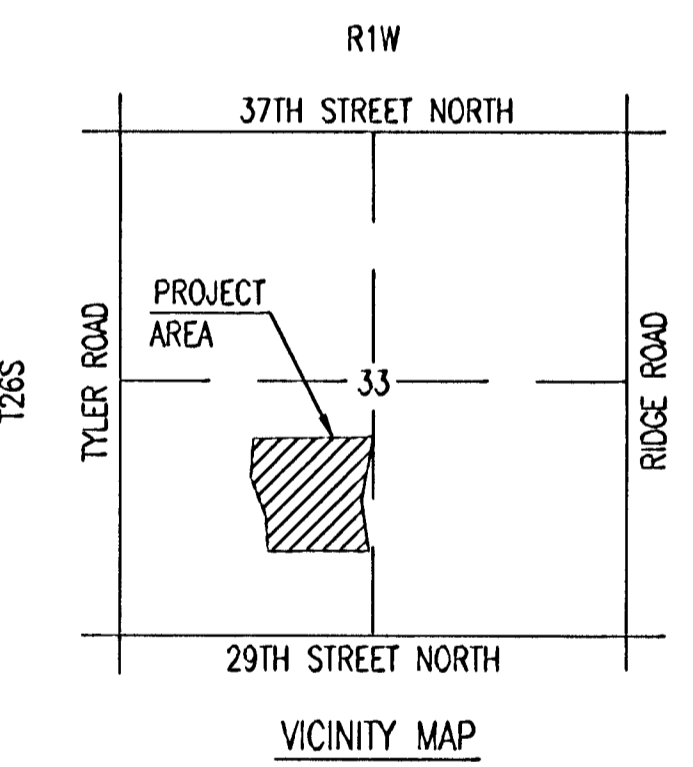
THE CONTRACTOR SHALL ADJUST WATER VALVE BOXES AS DIRECTED BY THE ENGINEER. THIS WORK TO BE SUBSIDIARY TO OTHER BID ITEMS.

THE CONTRACTOR SHALL PERMANENT SEED, FERTILIZE AND MULCH UNPAVED AREAS OF STREET RIGHT-OF-WAY AND ANY OTHER AREAS DISTURBED BY HIS CONSTRUCTION OPERATIONS IN ACCORDANCE WITH THE CITY OF WICHITA STANDARD SPECIFICATIONS. THIS WORK SHALL BE PAID FOR AT THE CONTRACT LUMP SUM PRICE BID FOR "PROJECT SEEDING".

THIS PROJECT DOES NOT INCLUDE ANY PROVISIONS FOR CONSTRUCTION OF DRIVEWAYS.

EROSION CONTROL (BMP'S). THE CONTRACTOR SHALL INSTALL AND/OR MAINTAIN EROSION CONTROL METHODS AS SPECIFIED ON SHEET NO. 9. THE FOLLOWING QUANTITIES ARE ESTIMATED AND SHALL CONSIDERED THE MINIMUM EFFORT REQUIRED. INSTALLATION OF THESE BMP'S DOES NOT RELIEVE THE CONTRACTOR OF THE RESPONSIBILITY OF ABATING SOIL EROSION.

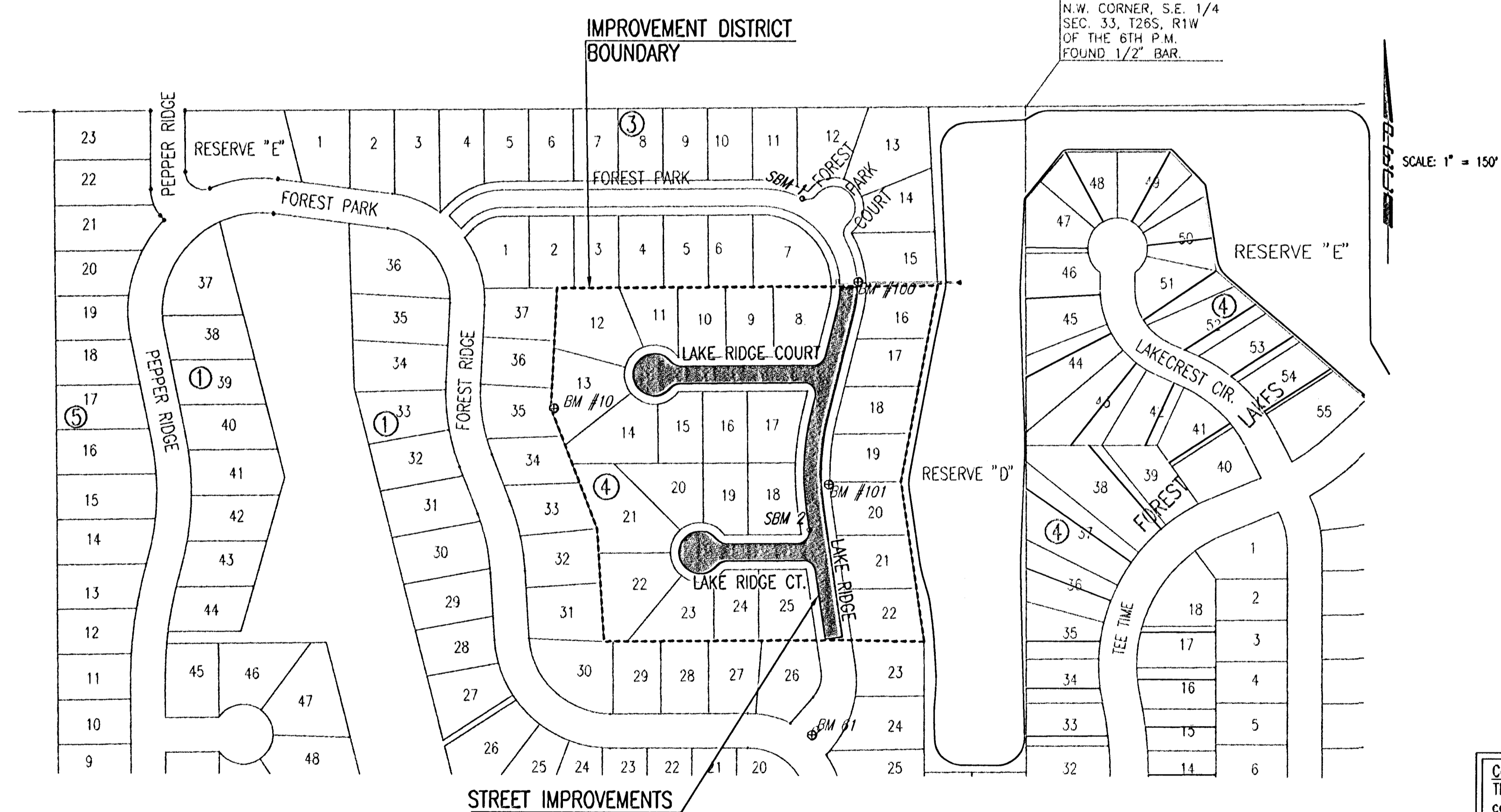
CONSTRUCTION ENTRANCE 1 EACH
 BACK OF CURB PROTECTION 2,290 LF.



EARTHWORK

The Contractor shall fine grade and recompact all street subgrade placed by Project # 468-82771 as required for the proposed pavement, or as directed by the Engineer. Curb backfill shall be furnished, placed, and compacted by the Contractor. This work shall be considered incidental to the lump sum bid item "Street Grading".

PROJECT LENGTH =1099.30 LIN. FT.



SCALE: 1" = 150'

SUBDIVISION BENCH MARKS (SBM)				
NO.	STREET AND STATION	FROM CL	DESCRIPTION	ELEVATION
1	FOREST PARK, STA. 56+22.78	14.5' LT.	N. END, WEST RETURN, FOREST PARK CT.	----
2	LAKE RIDGE, STA. 62+04.90	14.5' RT.	N. END, NORTH RETURN, LAKE RIDGE CT.	----

THE COST OF BENCH MARK DISC, INCLUDING INSTALLATION, SHALL BE INCIDENTAL TO THE CURB.

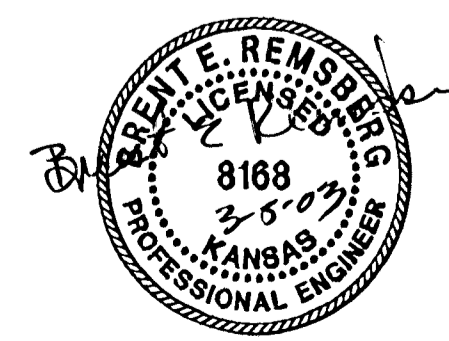
MARCH 2003

PLANS PREPARED BY
PROFESSIONAL ENGINEERING CONSULTANTS, P.A.
ENGINEERS
WICHITA, KANSAS

Construction Sequence Notes
 The Contractors for the Forest Lakes West Phase 4 Waterline and Street construction projects shall coordinate their efforts to complete the work as follows:

Waterline Construction
 The Contractor shall complete the Forest Lakes West Phase 4 Waterline project (448-89205) by May 02, 2003.

Street Construction
 The Contractor shall complete the Forest Lakes West Phase 4 Street project (472-82783) by June 06, 2003.



DSNR: BER OPER: BUS SCALE: 1=150.00
 C:\2001\01372\007\strtitle 03-05-2003 09:58:35 am