

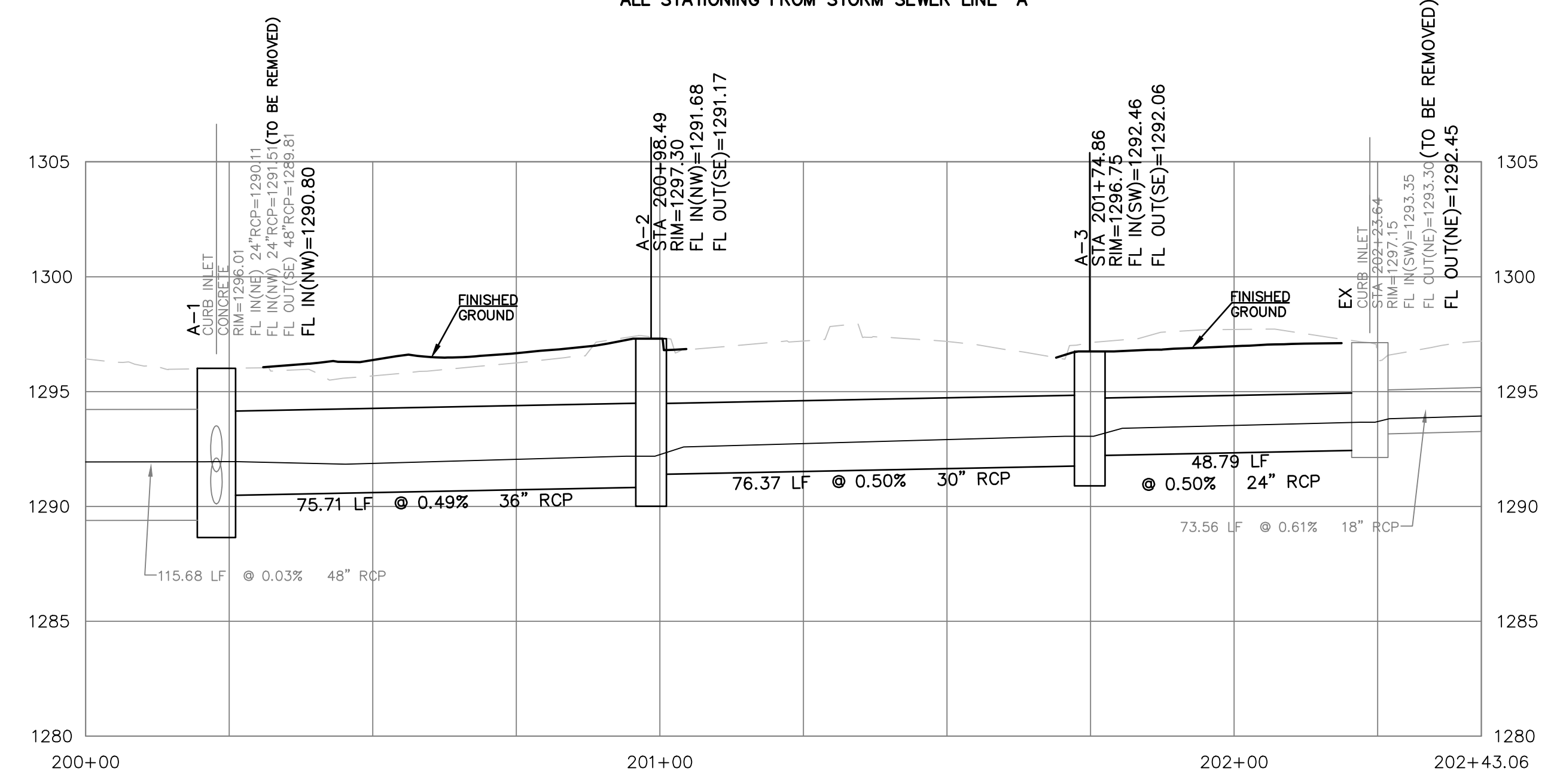
A-1, STA 200+22.78
 REPLACE CURB INLET WITH
 SOLID TOP
 N 1688111.5054, E 1645451.8734
 NORTHING AND EASTING TAKEN
 AT NEW FLOWLINE TIE IN

SANITARY SEWER MANHOLE
 BRICK
 RIM=1298.85
 FL IN(NE) 6"VCP=1292.95
 FL IN(SE) 10"VCP=1292.50
 FL OUT(NW) 10"VCP=1292.45

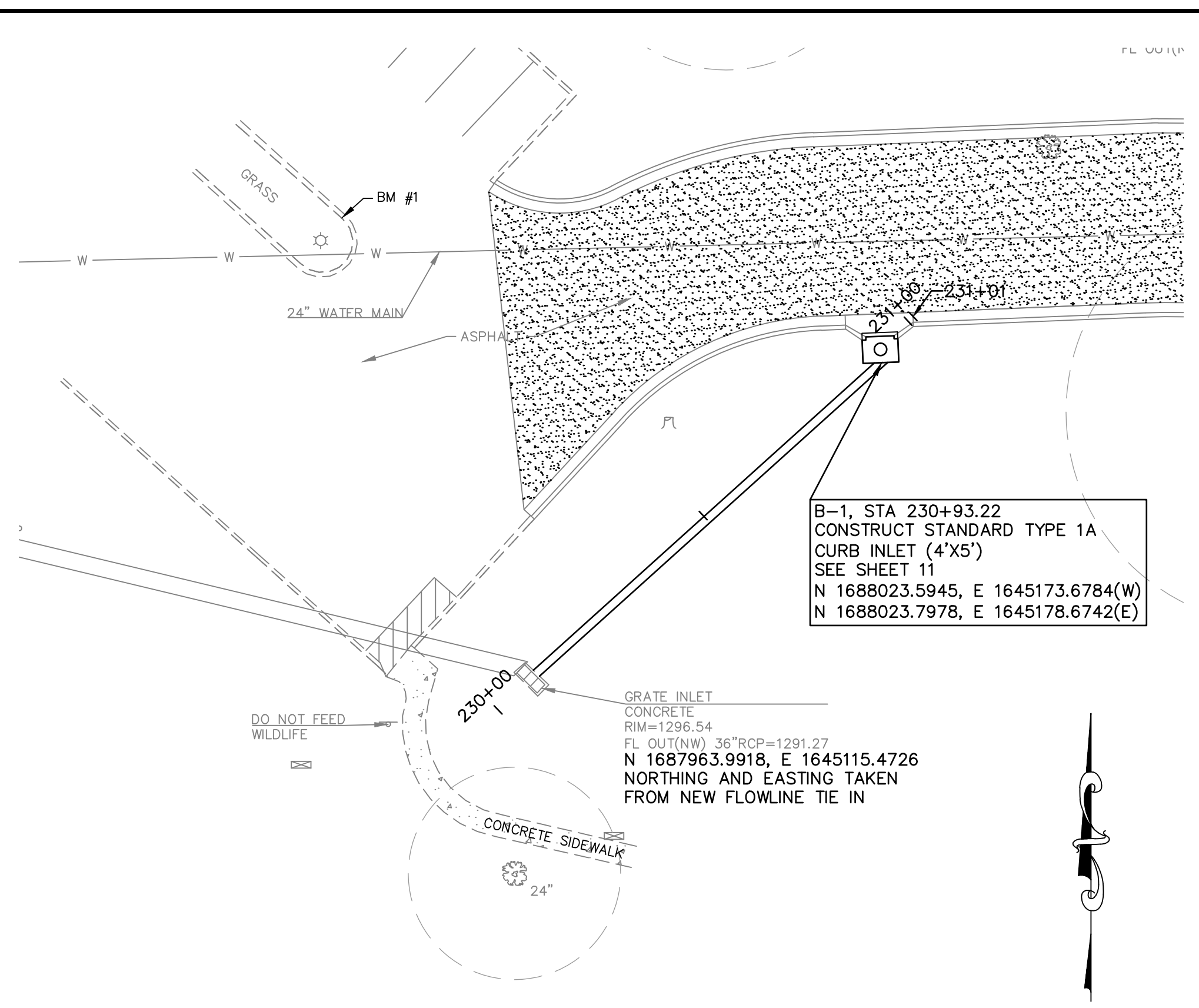
A-2, STA 200+98.49
 CL STA 30+81.25, 33.06' RT
 CONSTRUCT STANDARD TYPE 1A
 CURB INLET (4'X10')
 SEE SHEET 11
 N 1688171.0356, E 1645411.1354(N)
 N 1688161.7543, E 1645407.4130(S)

A-3, STA 201+74.86
 CL STA 30+85.39, 43.20' LT
 CONSTRUCT STANDARD TYPE 1A
 CURB INLET (4'X5')
 SEE SHEET 11
 N 1688198.9619, E 1645344.3243(N)
 N 1688194.2435, E 1645342.6699(S)

STORM SEWER LINE "A"
 ALL STATIONING FROM STORM SEWER LINE "A"



SCALE:
 PLAN: 1"=20'
 PROFILE: 1"=20' HORIZ.
 1"=5' VERT.



B-1, STA 230+93.22
 CONSTRUCT STANDARD TYPE 1A
 CURB INLET (4'X5')
 SEE SHEET 11
 N 1688023.5945, E 1645173.6784(W)
 N 1688023.7978, E 1645178.6742(E)

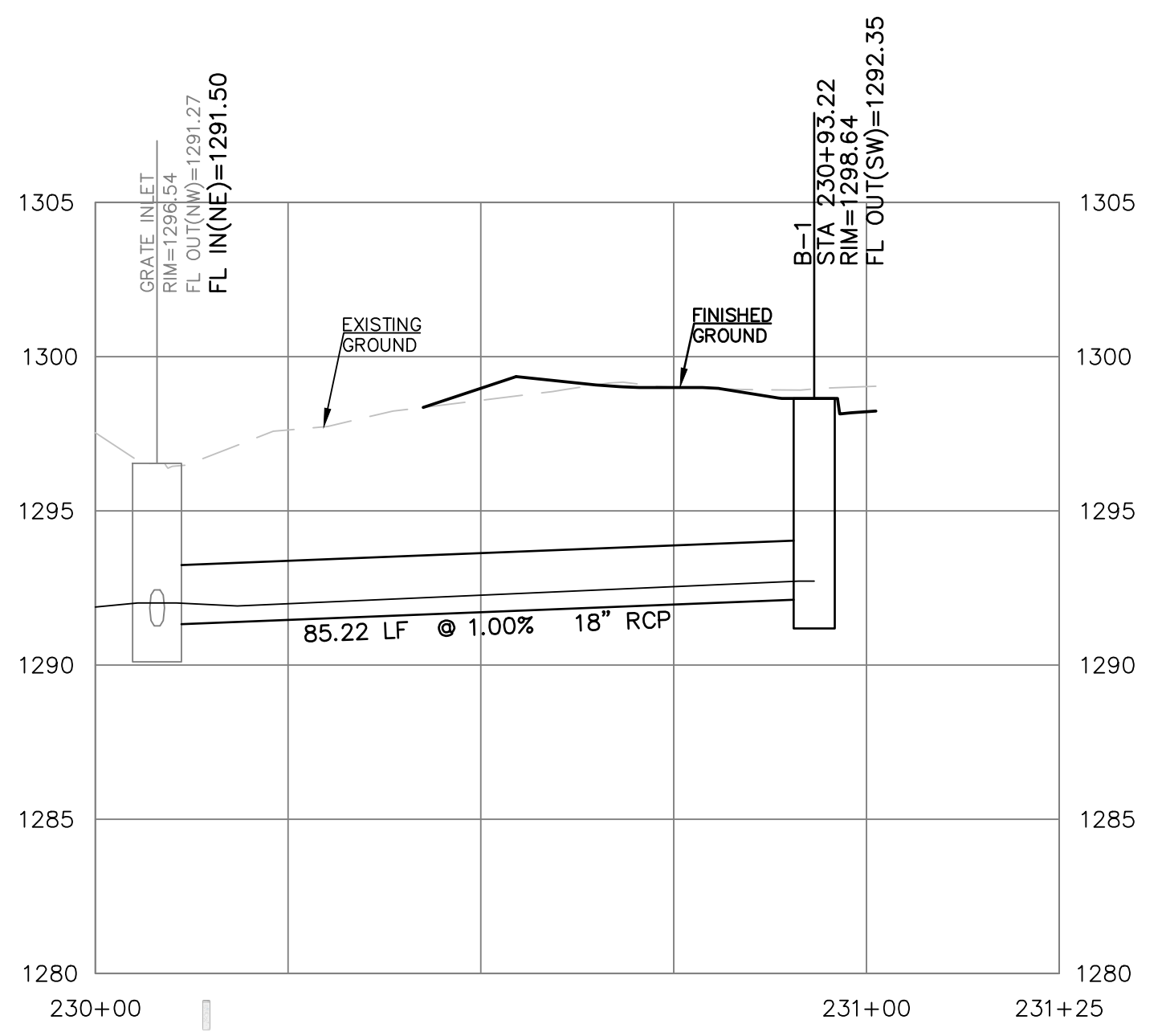
GRATE INLET
 CONCRETE
 RIM=1296.54
 FL OUT(NW) 36"RCP=1291.27
 N 1687963.9918, E 1645115.4726
 NORTHING AND EASTING TAKEN
 FROM NEW FLOWLINE TIE IN

SCALE:
 PLAN: 1"=20'
 PROFILE: 1"=20' HORIZ.
 1"=5' VERT.

NOTES:

- CONTRACTOR SHALL REPAIR INLET WHERE EXISTING PIPE HAS BEEN REMOVED PER CITY STANDARDS
- CONTRACTOR TO REPAIR FLOWLINE OF INLET IF REQUIRED FOR TIE-IN.

STORM SEWER LINE "B"
 ALL STATIONING FROM STORM SEWER LINE "B"



| | |
|-------------|-------------|
| PROJ. NO. | F18D0205 |
| DESIGNER | KDB |
| CFN | 0205DPP |
| SHEET | 10 OF 36 |
| REV | 0 |
| DATE | 6-7-17 |
| DESCRIPTION | DSN DWN CHK |

1104 E. 12TH AVENUE
 EMPORIA, KANSAS 66801
 PH. (620) 208-5240 | FAX (785) 762-7744
 emp@kveeng.com | www.kveeng.com

KAW VALLEY ENGINEERING
 KAW VALLEY ENGINEERING, INC. IS AUTHORIZED TO OFFER ENGINEERING SERVICES BY KANSAS STATE CERTIFICATE OF AUTHORIZATION # E-113. EXPIRES 12/31/18

CENTRAL AND NIMS SIGNALIZATION
PROJECT NUMBER 472-85280
WICHITA, KANSAS

STORM SEWER LINE "A" & "B" - PLAN & PROFILE

THIS DRAWING SHALL NOT BE UTILIZED BY ANY PERSON, FIRM, OR CORPORATION IN WHOLE OR IN PART WITHOUT THE SPECIFIC PERMISSION OF KAW VALLEY ENGINEERING, INC.