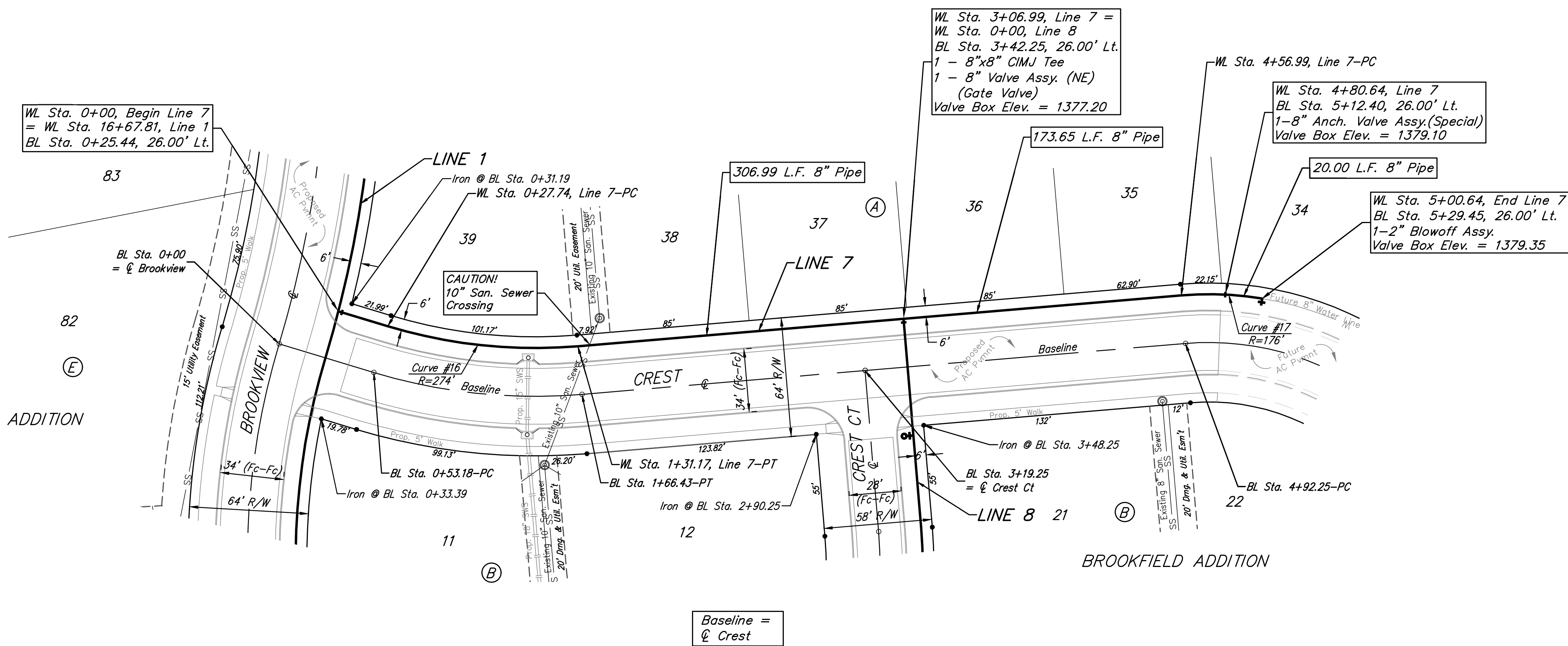
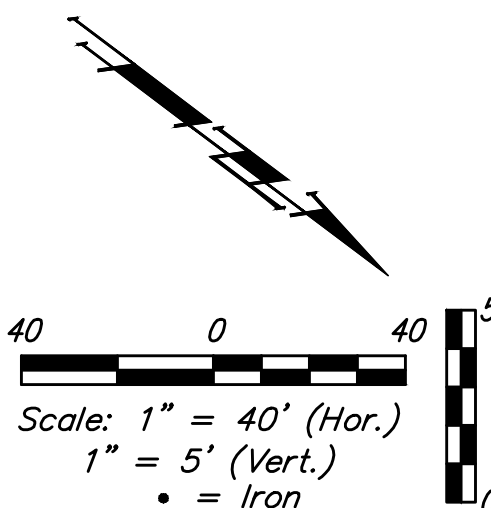


BENCHMARKS:
 RR spike in asphalt, SW COR., N1/2, SW1/4, Sec. 34, TWP. 26-S, R-2-E. Elev. = 1400.59 NAVD88

RR spike in E. face of power pole, 174± N. of S. line, N1/2, SW1/4 & 49± E. of W. line, SW1/4, Sec. 34, TWP. 26-S, R-2-E. Elev. = 1398.64 NAVD88

RR spike in S. face of power pole, 294± S. of N. line, SW1/4, & 48± E. of W. line, SW1/4, Sec. 34, TWP. 26-S, R-2-E. Elev. = 1386.14 NAVD88



Curve #16
 Curve Data Based on Centerline of Pipe
 Rad. = 274' Delta = 21°37'45" Tangent = 52.34'
 Arc = 103.43' L.C. = 102.82' Def./Ft. = 6.27357 Min.

Station	Arc	Chord 8' Left	Defl.	Total Defl.
0+27.74	-	-	0°00'00"	0°00'00"
0+50.00	22.26'	21.61'	2°19'39"	2°19'39"
0+75.00	25.00'	24.26'	2°36'50"	4°56'29"
1+00.00	25.00'	24.26'	2°36'51"	7°33'20"
1+25.00	25.00'	24.26'	2°36'50"	10°10'10"
1+31.17	6.17'	5.99'	0°38'42"	10°48'52"

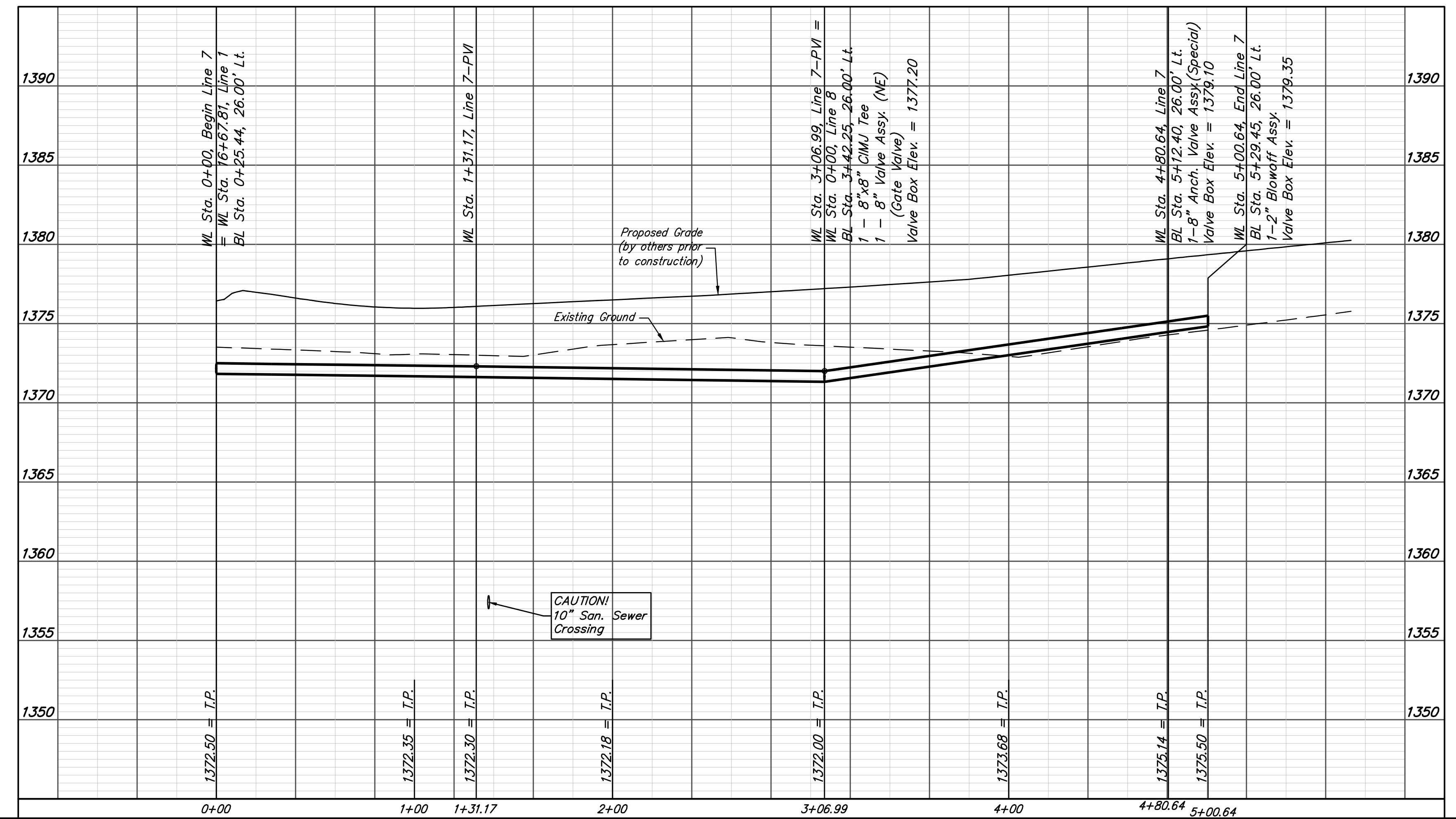
Curve #17
 Curve Data Based on Centerline of Pipe
 Rad. = 176' Delta = 14°12'29" Tangent = 21.93'
 Arc = 43.65' L.C. = 43.53' Def./Ft. = 9.76499 Min.

Station	Arc	Chord 8' Left	Defl.	Total Defl.
4+56.99	-	-	0°00'00"	0°00'00"
4+75.00	18.01'	18.82'	2°55'52"	2°55'52"
5+00.64	25.64'	26.78'	4°10'22"	7°06'14"

BROOKFIELD ADDITION

BROOKFIELD ADDITION

Baseline =
 C Crest



	Brookfield Addition - Phase I	
	LINE 7 Water Distribution System	
Baughman Company, P.A. 315 Ellis St. Wichita, KS 67211 P 316-262-7271 F 316-262-0149 ENGINEERING SURVEYING PLANNING LANDSCAPE ARCHITECTURE		
PROJECT NUMBER 448-90787	DESIGN AEG	DRAWN JAK
REVISIONS:	APPROVED	DATE 6/30/17
	SCALE Noted	SHEET 11 OF 21