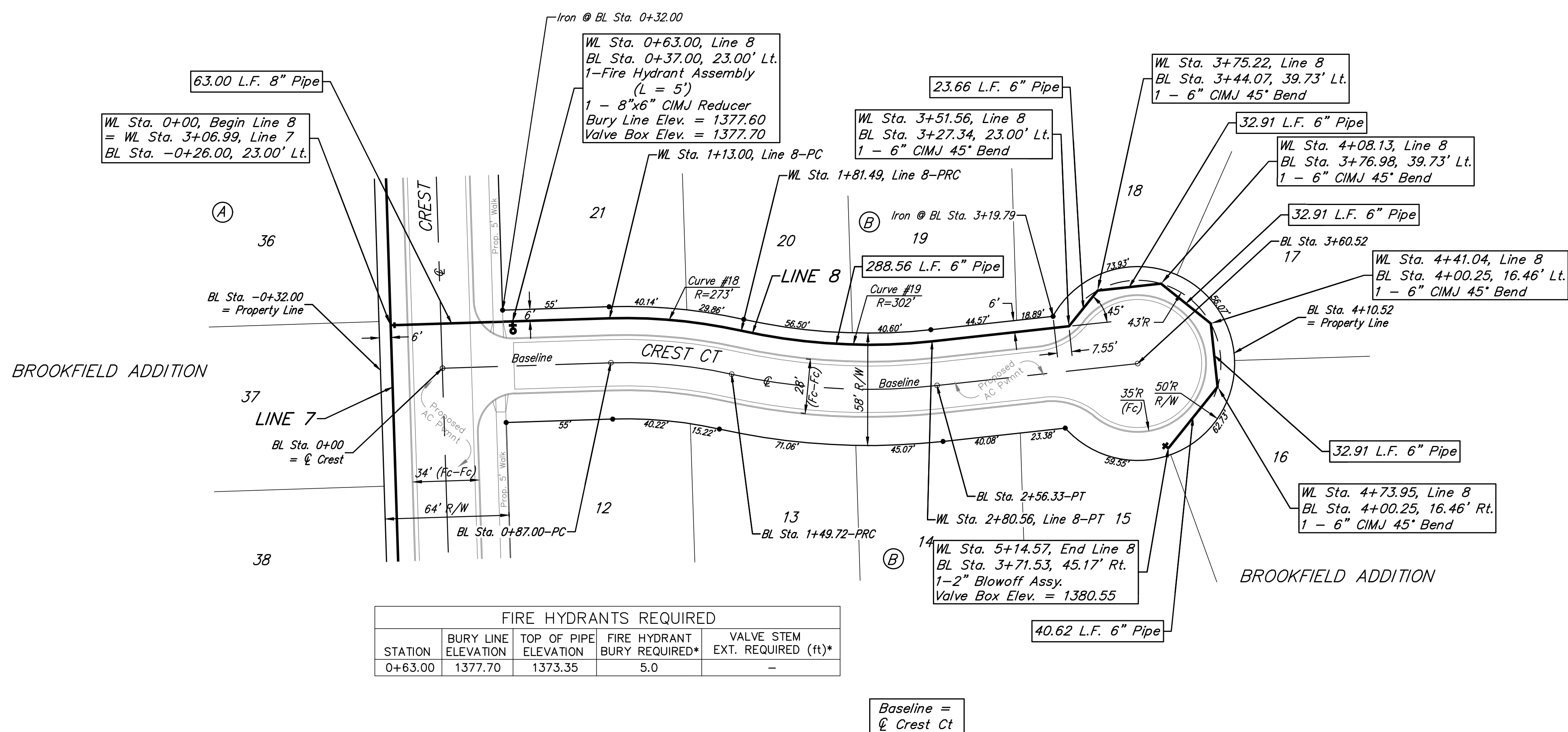


BENCHMARKS:
 RR spike in asphalt, SW COR., N1/2, SW1/4, Sec. 34, TWP. 26-S, R-2-E. Elev. = 1400.59 NAVD88

RR spike in E. face of power pole, 174± N. of S. line, N1/2, SW1/4 & 49± E. of W. line, SW1/4, Sec. 34, TWP. 26-S, R-2-E. Elev. = 1398.64 NAVD88

RR spike in S. face of power pole, 294± S. of N. line, SW1/4, & 48± E. of W. line, SW1/4, Sec. 34, TWP. 26-S, R-2-E. Elev. = 1386.14 NAVD88



FIRE HYDRANTS REQUIRED				
STATION	BURY LINE ELEVATION	TOP OF PIPE ELEVATION	FIRE HYDRANT BURY REQUIRED*	VALVE STEM EXT. REQUIRED (ft)*
0+63.00	1377.70	1373.35	5.0	-

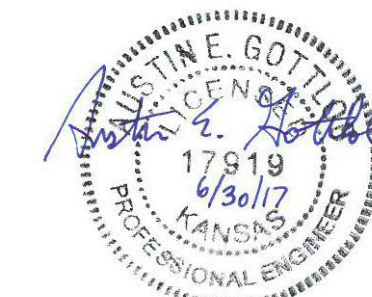
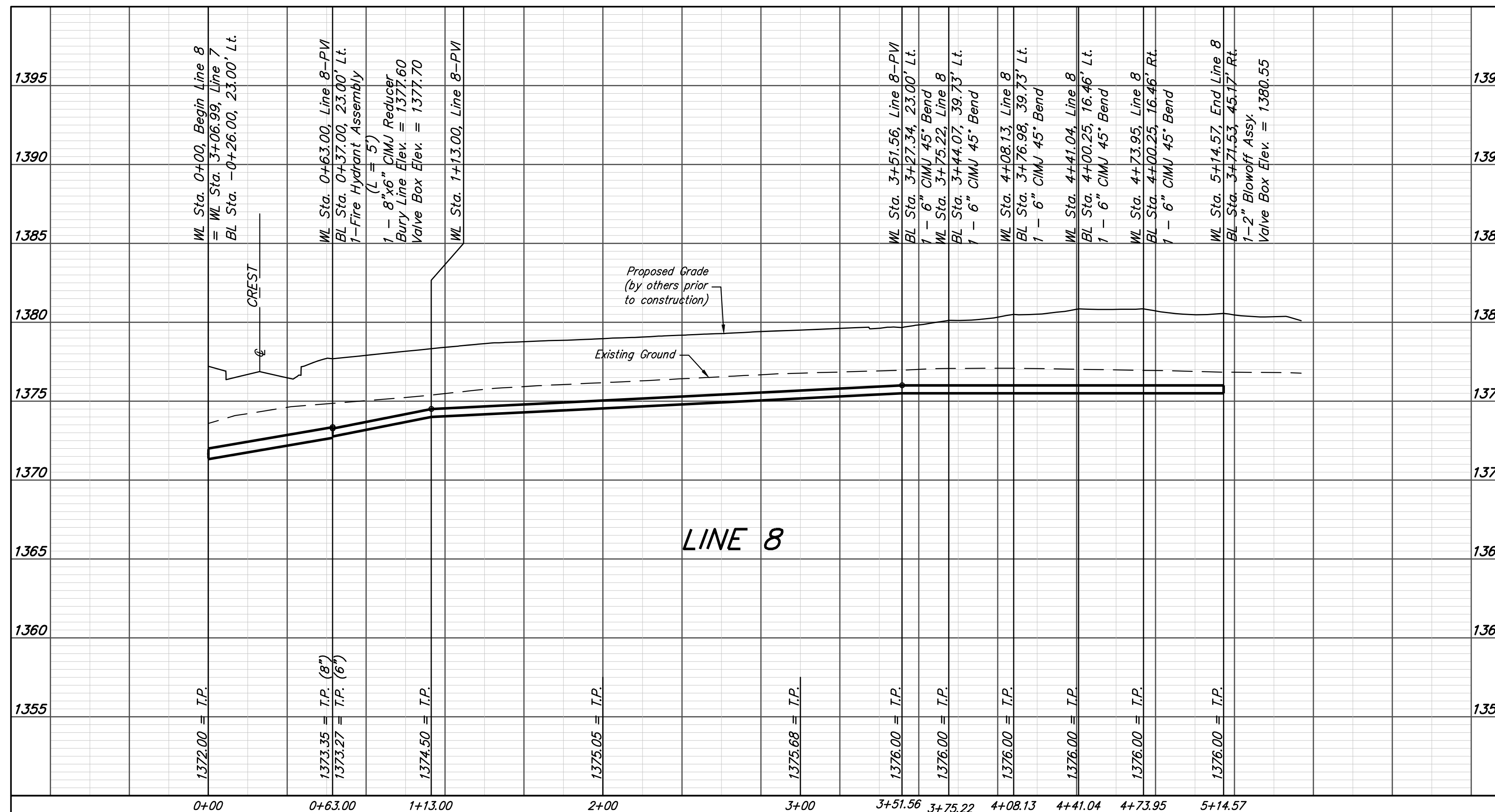
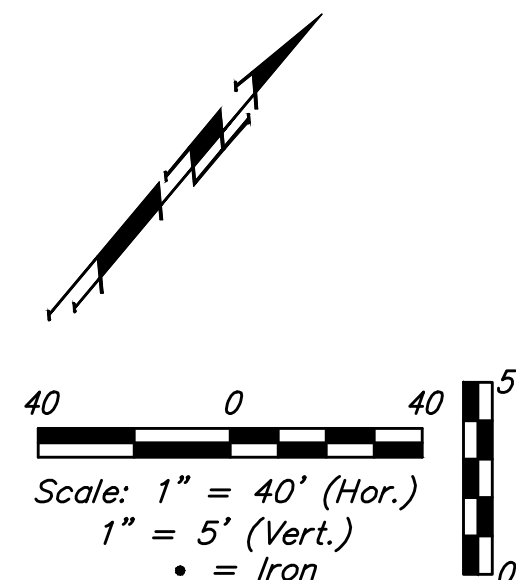
Baseline =
 ☉ Crest Ct

Curve #18
 Curve Data Based on Centerline of Pipe
 Rad. = 273' Delta = 142°27' Tangent = 34.43'
 Arc = 68.49' L.C. = 68.31' Def./Ft. = 6.29617 Min.

Station	Arc	Chord 8' Left	Defl.	Total Defl.
1+13.00	-	-	0°00'00"	0°00'00"
1+25.00	12.00'	12.35'	1°15'33"	1°15'33"
1+50.00	25.00'	25.72'	2°37'25"	3°52'58"
1+75.00	25.00'	25.72'	2°37'24"	6°30'22"
1+81.49	6.49'	6.68'	0°40'52"	7°11'14"

Curve #19
 Curve Data Based on Centerline of Pipe
 Rad. = 302' Delta = 18°47'45" Tangent = 49.98'
 Arc = 99.07' L.C. = 98.63' Def./Ft. = 5.69168 Min.

Station	Arc	Chord 8' Left	Defl.	Total Defl.
1+81.49	-	-	0°00'00"	0°00'00"
2+00.00	18.51'	18.02'	1°45'21"	1°45'21"
2+25.00	25.00'	24.33'	2°22'18"	4°07'39"
2+50.00	25.00'	24.33'	2°22'17"	6°29'56"
2+75.00	25.00'	24.33'	2°22'18"	8°52'14"
2+80.56	5.56'	5.41'	0°31'39"	9°23'53"



	Brookfield Addition - Phase I	
	LINE 8	
Water Distribution System		
<small>Baughman Company, P.A. 315 Ellis St. Wichita, KS 67211 P 316-262-7271 F 316-262-0149 ENGINEERING SURVEYING PLANNING LANDSCAPE ARCHITECTURE</small>		
PROJECT NUMBER 448-90787	DESIGN AEG	DRAWN JAK
REVISIONS:	APPROVED	DATE 6/30/17
	SCALE Noted	SHEET 12 OF 21