

BENCHMARKS:
 RR spike in asphalt, SW COR., N1/2, SW1/4, Sec. 34, TWP. 26-S, R-2-E. Elev. = 1400.59 NAVD88

RR spike in E. face of power pole, 174± N. of S. line, N1/2, SW1/4 & 49± E. of W. line, SW1/4, Sec. 34, TWP. 26-S, R-2-E. Elev. = 1398.64 NAVD88

RR spike in S. face of power pole, 294± S. of N. line, SW1/4, & 48± E. of W. line, SW1/4, Sec. 34, TWP. 26-S, R-2-E. Elev. = 1386.14 NAVD88

Curve #1
 Curve Data Based on Centerline of Pipe
 Rad. = 251' Delta = 13°59'25" Tangent = 30.80'
 Arc = 61.29' L.C. = 61.14' Def./Ft. = 6.84791 Min.

Station	Arc	Chord 8' Right	Defl.	Total Defl.
0+48.85	-	-	0°00'00"	0°00'00"
0+50.00	1.15'	1.19'	0°07'53"	0°07'53"
0+75.00	25.00'	25.79'	2°51'11"	2°59'04"
1+00.00	25.00'	25.79'	2°51'12"	5°50'16"
1+10.14	10.14'	10.46'	1°09'26"	6°59'42"

Curve #2
 Curve Data Based on Centerline of Pipe
 Rad. = 1026' Delta = 26°42'55" Tangent = 243.63'
 Arc = 478.39' L.C. = 474.07' Def./Ft. = 1.67532 Min.

Station	Arc	Chord 8' Right	Defl.	Total Defl.
1+10.14	-	-	0°00'00"	0°00'00"
1+25.00	14.86'	14.98'	0°24'54"	0°24'54"
1+50.00	25.00'	25.19'	0°41'53"	1°06'47"
1+56.88	6.88'	6.93'	0°11'31"	1°18'18"
1+75.00	18.12'	18.26'	0°30'22"	1°48'40"
2+00.00	25.00'	25.19'	0°41'53"	2°30'33"
2+25.00	25.00'	25.19'	0°41'53"	3°12'26"
2+50.00	25.00'	25.19'	0°41'53"	3°54'19"
2+75.00	25.00'	25.19'	0°41'53"	4°36'12"
3+00.00	25.00'	25.19'	0°41'53"	5°18'05"
3+25.00	25.00'	25.19'	0°41'53"	5°59'58"
3+50.00	25.00'	25.19'	0°41'53"	6°41'51"
3+75.00	25.00'	25.19'	0°41'53"	7°23'44"
3+92.86	17.86'	18.00'	0°29'55"	7°53'39"
4+00.00	7.14'	7.20'	0°11'58"	8°05'37"
4+25.00	25.00'	25.19'	0°41'53"	8°47'30"
4+50.00	25.00'	25.19'	0°41'53"	9°29'23"
4+75.00	25.00'	25.19'	0°41'53"	10°11'16"
5+00.00	25.00'	25.19'	0°41'53"	10°53'09"
5+25.00	25.00'	25.19'	0°41'52"	11°35'01"
5+50.00	25.00'	25.19'	0°41'53"	12°16'54"
5+75.00	25.00'	25.19'	0°41'53"	12°58'47"
5+88.53	13.53'	13.64'	0°22'41"	13°21'28"

WL Sta. 0+00, Begin Line 1
 BL Sta. 0+50.00, 37.50' Rt.
 Connect to Existing 8" Valve and Extend 8" Pipe South.
 Contractor to Verify Depth & Location of Prop. 16" Water Line Prior to Construction.

CAUTION!
 8" San. Sewer Crossing

NOTE: Tee and Valve to be installed by 37th ST Watermain project.

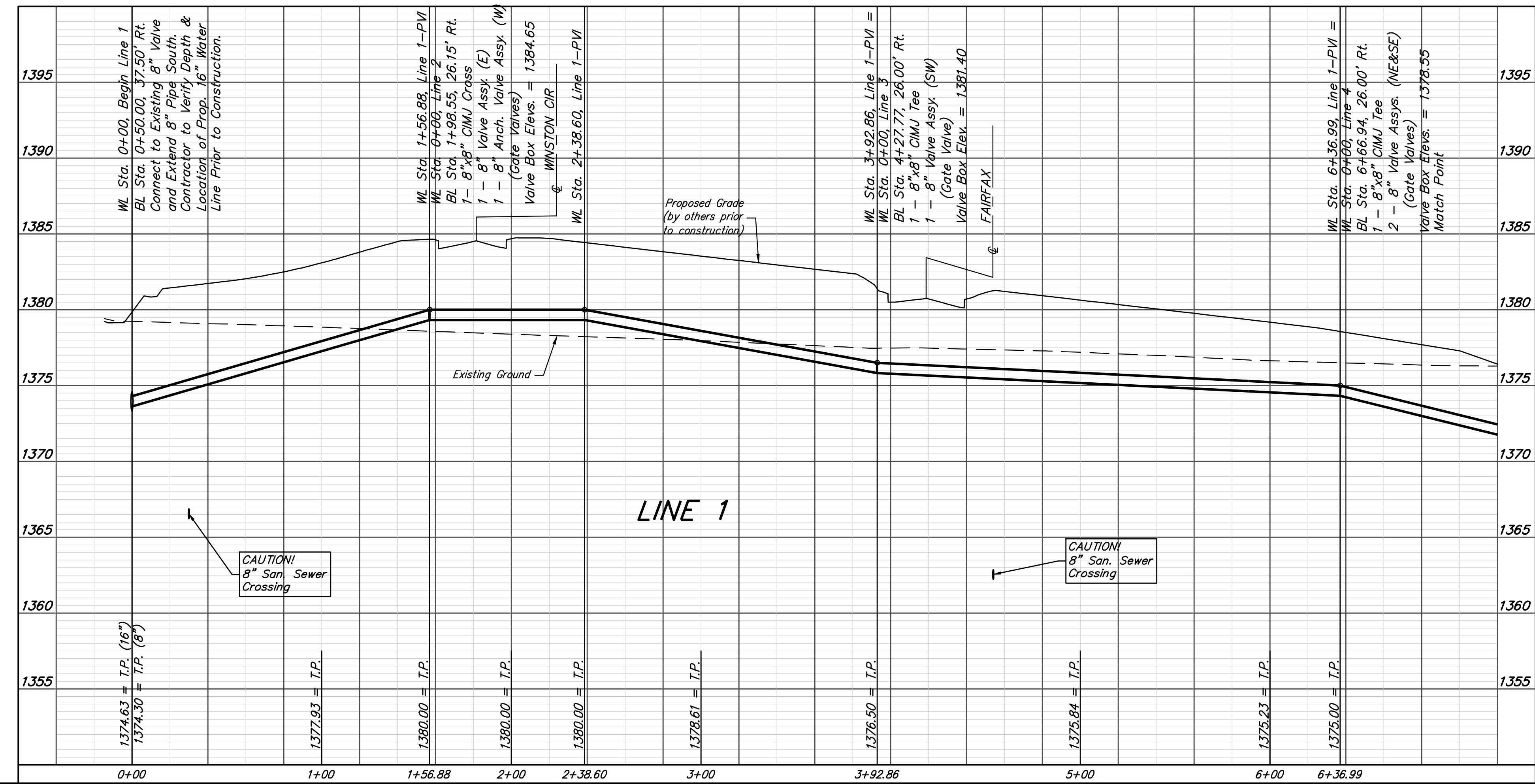
WL Sta. 1+56.88, Line 1 =
 WL Sta. 0+00, Line 2
 BL Sta. 1+98.55, 26.15' Rt.
 1 - 8"x8" CIMJ Cross
 1 - 8" Valve Assy. (E)
 1 - 8" Anch. Valve Assy. (W) (Gate Valves)
 Valve Box Elevs. = 1384.65

Baseline =
 Q Bristol

WL Sta. 3+92.86, Line 1 =
 WL Sta. 0+00, Line 3
 BL Sta. 4+27.77, 26.00' Rt.
 1 - 8"x8" CIMJ Tee
 1 - 8" Valve Assy. (SW) (Gate Valve)
 Valve Box Elev. = 1381.40

Baseline =
 Q Bristol

WL Sta. 6+36.99, Line 1 =
 WL Sta. 0+00, Line 4
 BL Sta. 6+66.94, 26.00' Rt.
 1 - 8"x8" CIMJ Tee
 2 - 8" Valve Assys. (NE&SE) (Gate Valves)
 Valve Box Elevs. = 1378.55
 Match Point



Baughman Brookfield Addition - Phase I
LINE 1
 Water Distribution System

Baughman Company, P.A. 315 Ellis St. Wichita, KS 67211 P 316-262-7271 F 316-262-0149
 ENGINEERING | SURVEYING | PLANNING | LANDSCAPE ARCHITECTURE

PROJECT NUMBER: 448-90787
 DESIGN: AEG
 DRAWN: JAK
 APPROVED: [Signature]
 DATE: 6/30/17

REVISIONS:

SCALE: Noted
 SHEET: 4 OF 21

E:\Projects\BrookfieldAddition_1604P190\Engineering\Phase I\WTR_1608E541\WTR_PLANS.dwg