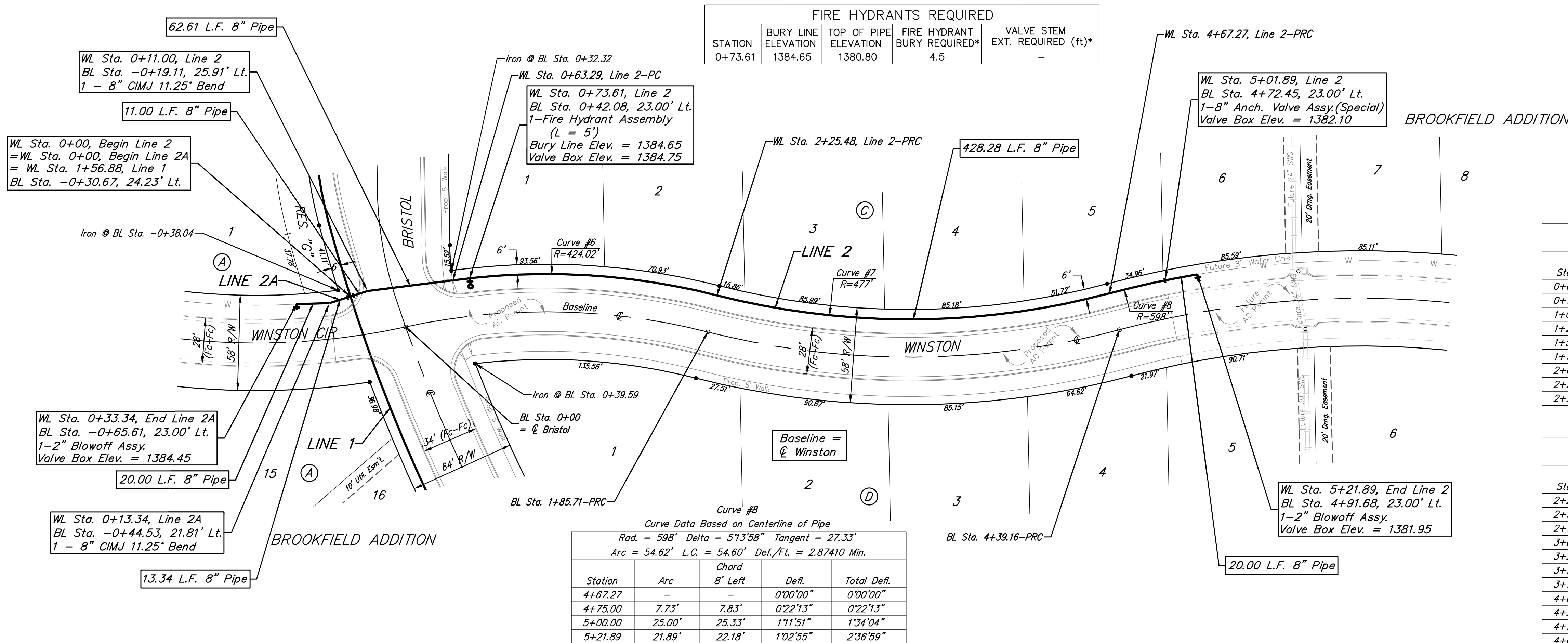


BENCHMARKS:
 RR spike in asphalt, SW COR., N1/2, SW1/4, Sec. 34, TWP. 26-S, R-2-E. Elev. = 1400.59 NAVD88

RR spike in E. face of power pole, 174± N. of S. line, N1/2, SW1/4 & 49± E. of W. line, SW1/4, Sec. 34, TWP. 26-S, R-2-E. Elev. = 1398.64 NAVD88

RR spike in S. face of power pole, 294± S. of N. line, SW1/4, & 48± E. of W. line, SW1/4, Sec. 34, TWP. 26-S, R-2-E. Elev. = 1386.14 NAVD88



FIRE HYDRANTS REQUIRED				
STATION	BURY LINE ELEVATION	TOP OF PIPE ELEVATION	FIRE HYDRANT BURY REQUIRED*	VALVE STEM EXT. REQUIRED (ft)*
0+73.61	1384.65	1380.80	4.5	-

Curve #6
 Curve Data Based on Centerline of Pipe
 Rad. = 424.02' Delta = 21°54'59" Tangent = 82.10'
 Arc = 162.19' L.C. = 161.21' Def./Ft. = 4.05384 Min.

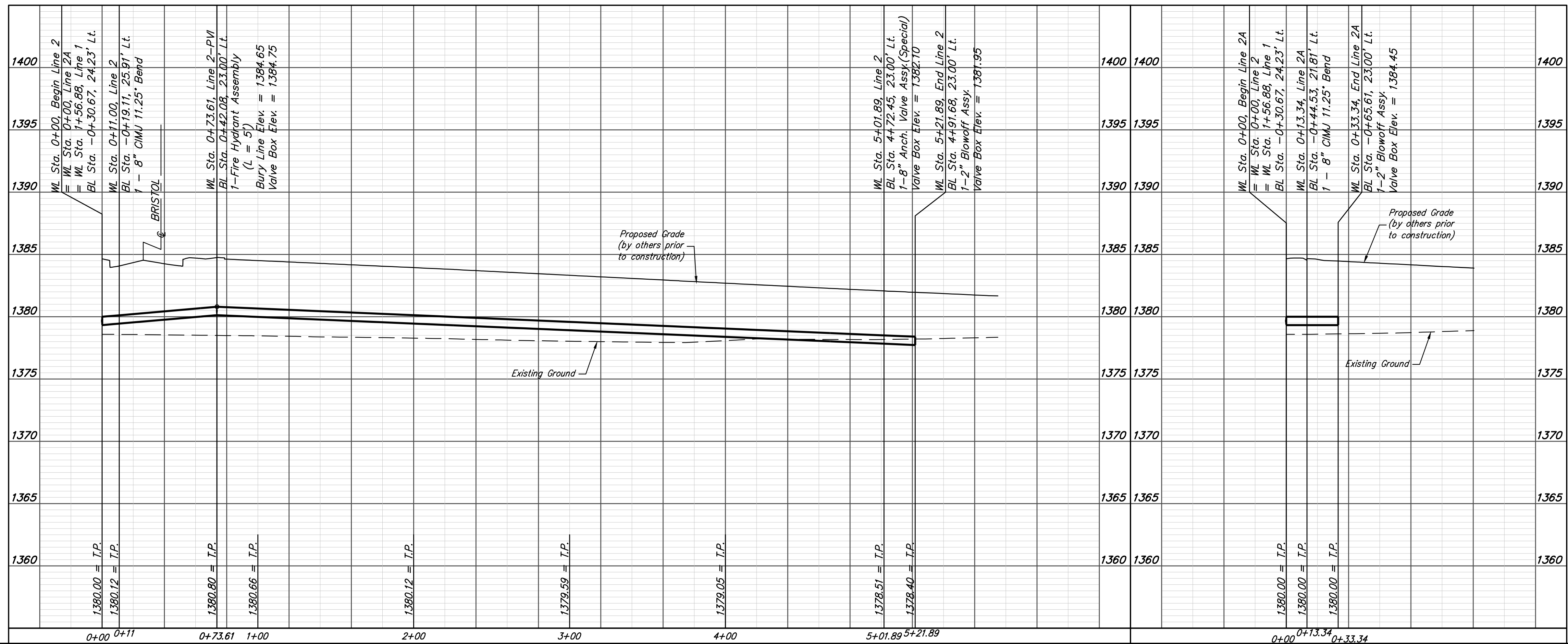
Station	Arc	Chord 8' Left	Defl.	Total Defl.
0+63.29	-	-	0°00'00"	0°00'00"
0+75.00	11.71'	11.93'	0°47'28"	0°47'28"
1+00.00	25.00'	25.47'	1°41'21"	2°28'49"
1+25.00	25.00'	25.47'	1°41'21"	4°10'10"
1+50.00	25.00'	25.47'	1°41'20"	5°51'30"
1+75.00	25.00'	25.47'	1°41'21"	7°32'51"
2+00.00	25.00'	25.47'	1°41'21"	9°14'12"
2+25.00	25.00'	25.47'	1°41'21"	10°55'33"
2+25.48	0.48'	0.49'	0°01'57"	10°57'30"

Curve #7
 Curve Data Based on Centerline of Pipe
 Rad. = 447' Delta = 29°02'36" Tangent = 115.78'
 Arc = 241.79' L.C. = 224.17' Def./Ft. = 3.60354 Min.

Station	Arc	Chord 8' Left	Defl.	Total Defl.
2+25.48	-	-	0°00'00"	0°00'00"
2+50.00	24.52'	22.56'	1°28'22"	1°28'22"
2+75.00	25.00'	23.01'	1°30'05"	2°58'27"
3+00.00	25.00'	23.01'	1°30'05"	4°28'32"
3+25.00	25.00'	23.01'	1°30'05"	5°58'37"
3+50.00	25.00'	23.01'	1°30'06"	7°28'43"
3+75.00	25.00'	23.01'	1°30'05"	8°58'48"
4+00.00	25.00'	23.01'	1°30'05"	10°28'53"
4+25.00	25.00'	23.01'	1°30'06"	11°58'59"
4+50.00	25.00'	23.01'	1°30'05"	13°29'04"
4+67.27	17.27'	15.89'	1°02'14"	14°31'18"

Curve #8
 Curve Data Based on Centerline of Pipe
 Rad. = 598' Delta = 5°13'58" Tangent = 27.33'
 Arc = 54.62' L.C. = 54.60' Def./Ft. = 2.87410 Min.

Station	Arc	Chord 8' Left	Defl.	Total Defl.
4+67.27	-	-	0°00'00"	0°00'00"
4+75.00	7.73'	7.83'	0°22'13"	0°22'13"
5+00.00	25.00'	25.33'	1°11'51"	1°34'04"
5+21.89	21.89'	22.18'	1°02'55"	2°36'59"



Baughman Brookfield Addition - Phase 1
LINE 2 & LINE 2A
 Water Distribution System

Baughman Company, P.A. 315 Ellis St. Wichita, KS 67211 P 316-262-7271 F 316-262-0149
 ENGINEERING | SURVEYING | PLANNING | LANDSCAPE ARCHITECTURE

PROJECT NUMBER: 448-90787
 DESIGN: AEG
 DRAWN: JAK
 APPROVED: [Signature]
 DATE: 6/30/17

REVISIONS:

SCALE: Noted
 SHEET: **7 OF 21**