

BENCHMARKS:
 RR spike in asphalt, SW COR., N1/2, SW1/4, Sec. 34, TWP. 26-S, R-2-E. Elev. = 1400.59 NAVD88

RR spike in E. face of power pole, 174± N. of S. line, N1/2, SW1/4 & 49± E. of W. line, SW1/4, Sec. 34, TWP. 26-S, R-2-E. Elev. = 1398.64 NAVD88

RR spike in S. face of power pole, 294± S. of N. line, SW1/4, & 48± E. of W. line, SW1/4, Sec. 34, TWP. 26-S, R-2-E. Elev. = 1386.14 NAVD88

Curve #9
 Curve Data Based on Centerline of Pipe
 Rad. = 488.71' Delta = 9°29'00" Tangent = 40.54'
 Arc = 80.89' L.C. = 80.80' Def./Ft. = 3.51712 Min.

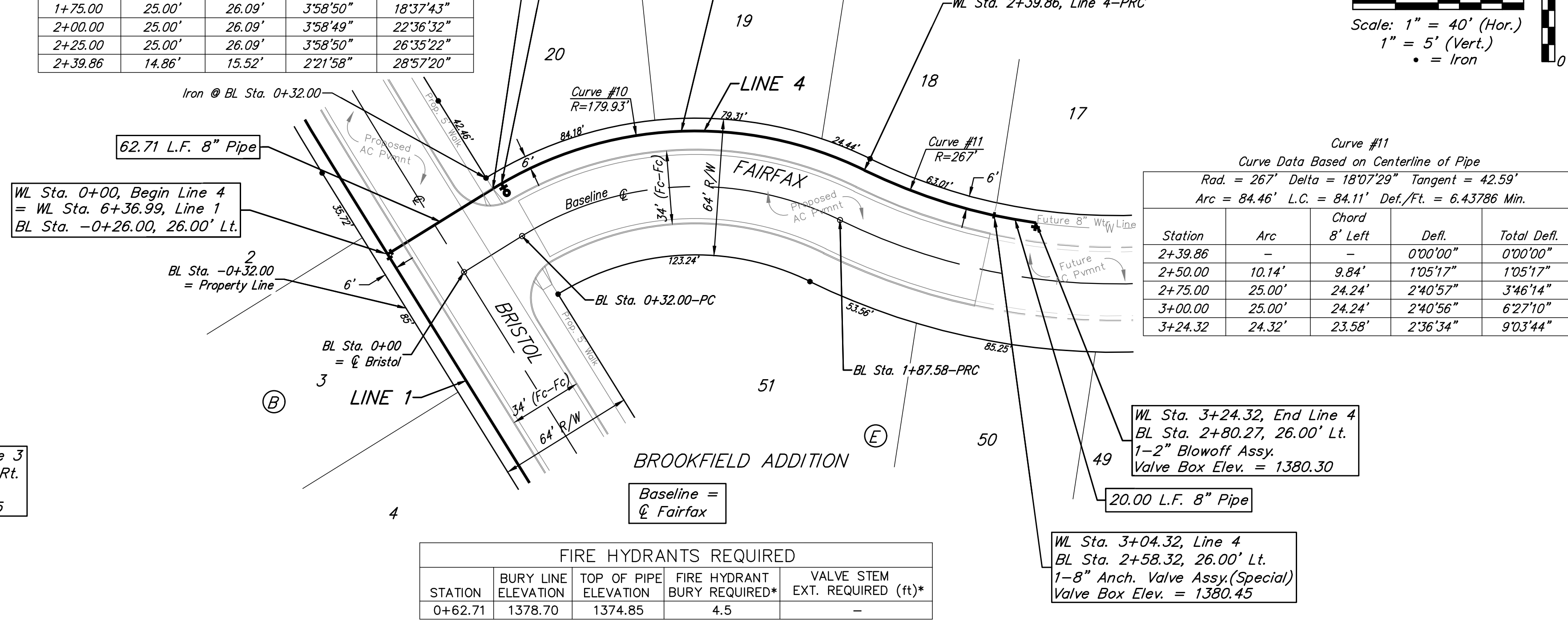
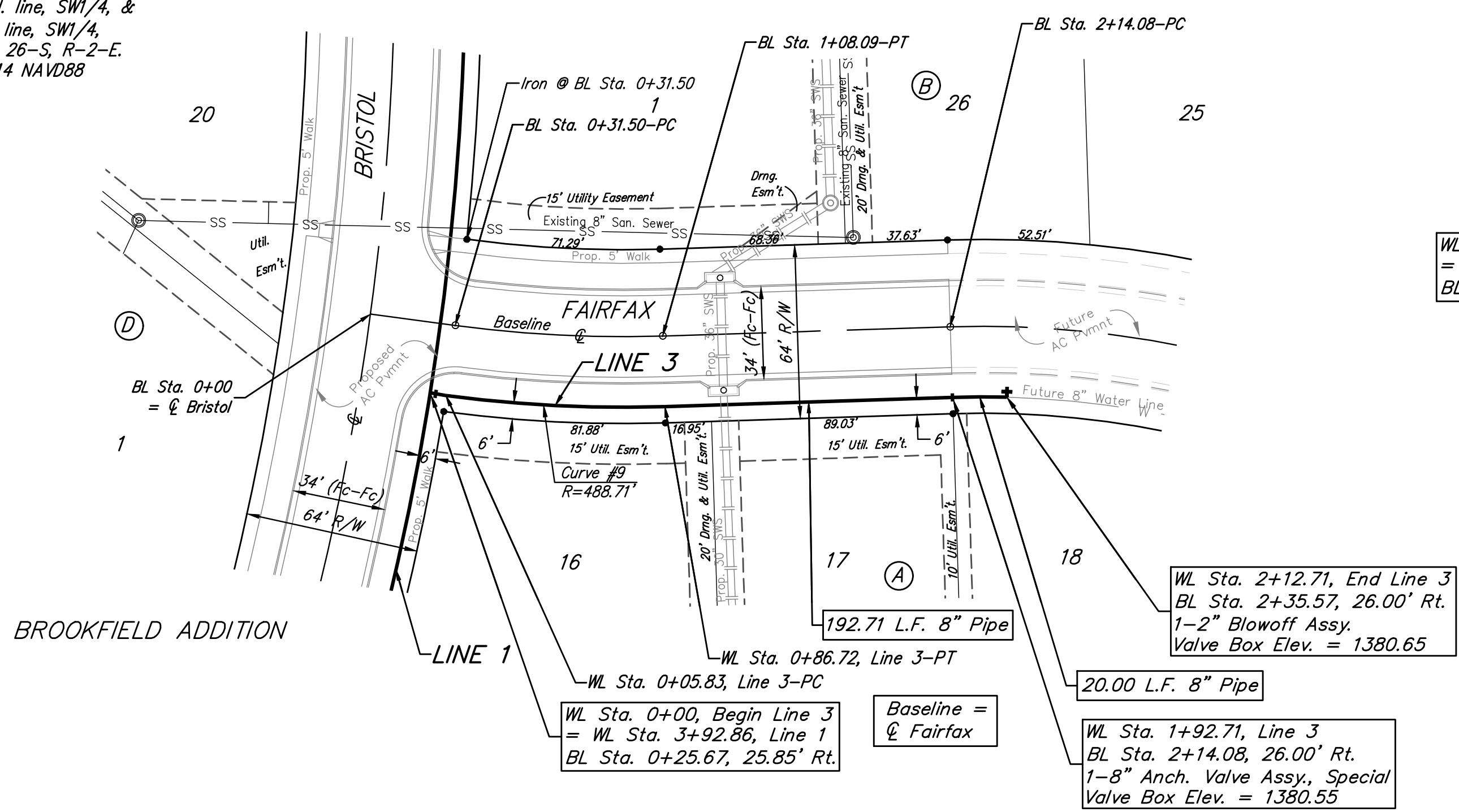
Station	Arc	Chord 8' Right	Defl.	Total Defl.
0+05.83	-	-	0°00'00"	0°00'00"
0+25.00	19.17'	19.48'	1°07'25"	1°07'25"
0+50.00	25.00'	25.41'	1°27'56"	2°35'21"
0+75.00	25.00'	25.41'	1°27'56"	4°03'17"
0+86.72	11.72'	11.91'	0°41'13"	4°44'30"

Curve #10
 Curve Data Based on Centerline of Pipe
 Rad. = 179.93' Delta = 57°54'39" Tangent = 99.55'
 Arc = 181.86' L.C. = 174.22' Def./Ft. = 9.55309 Min.

Station	Arc	Chord 8' Left	Defl.	Total Defl.
0+58.00	-	-	0°00'00"	0°00'00"
0+62.71	4.71'	4.92'	0°45'00"	0°45'00"
0+75.00	12.29'	12.83'	1°57'24"	2°42'24"
1+00.00	25.00'	26.09'	3°58'50"	6°41'14"
1+25.00	25.00'	26.09'	3°58'49"	10°40'03"
1+50.00	25.00'	26.09'	3°58'50"	14°38'53"
1+75.00	25.00'	26.09'	3°58'50"	18°37'43"
2+00.00	25.00'	26.09'	3°58'49"	22°36'32"
2+25.00	25.00'	26.09'	3°58'50"	26°35'22"
2+39.86	14.86'	15.52'	2°21'58"	28°57'20"

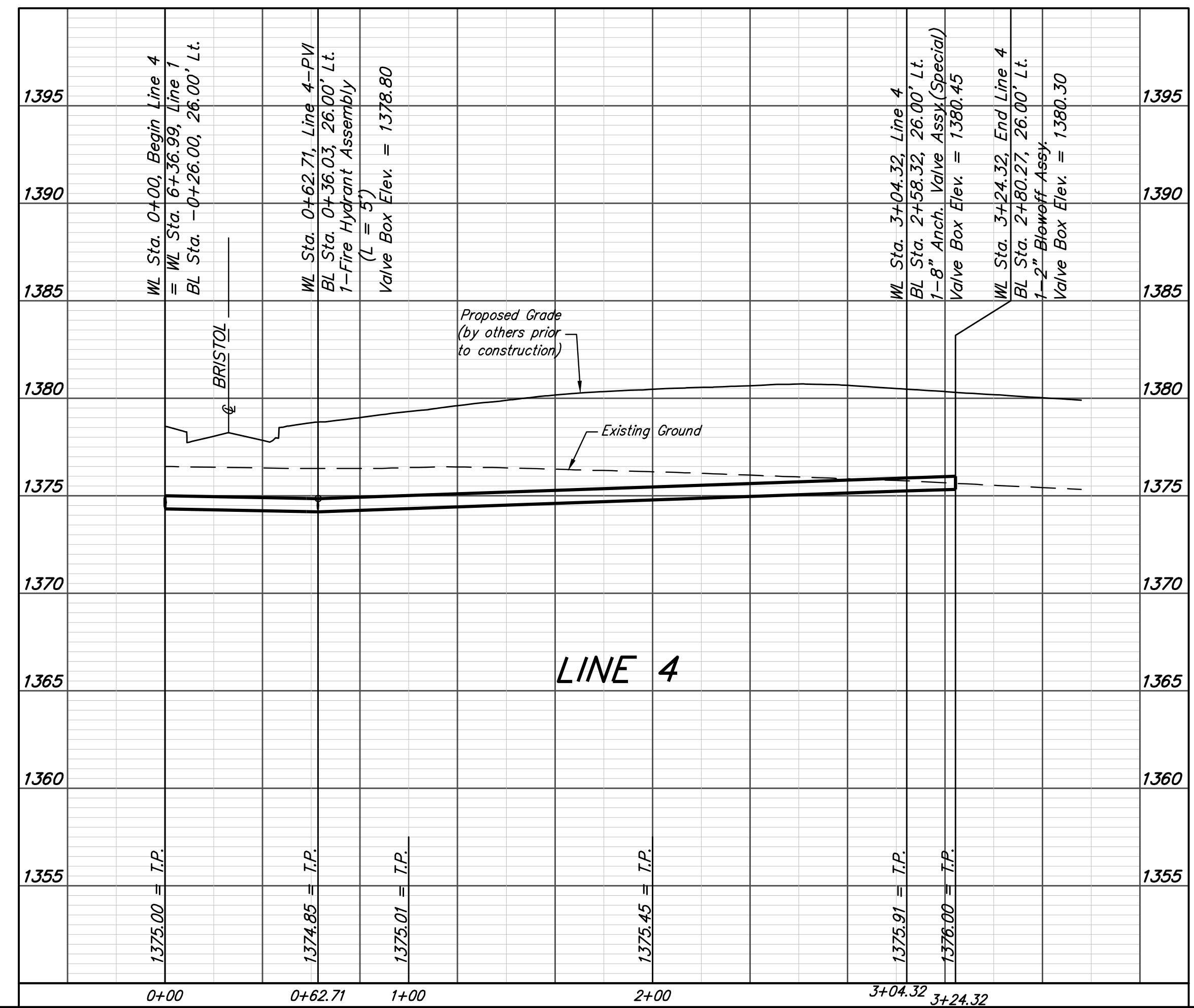
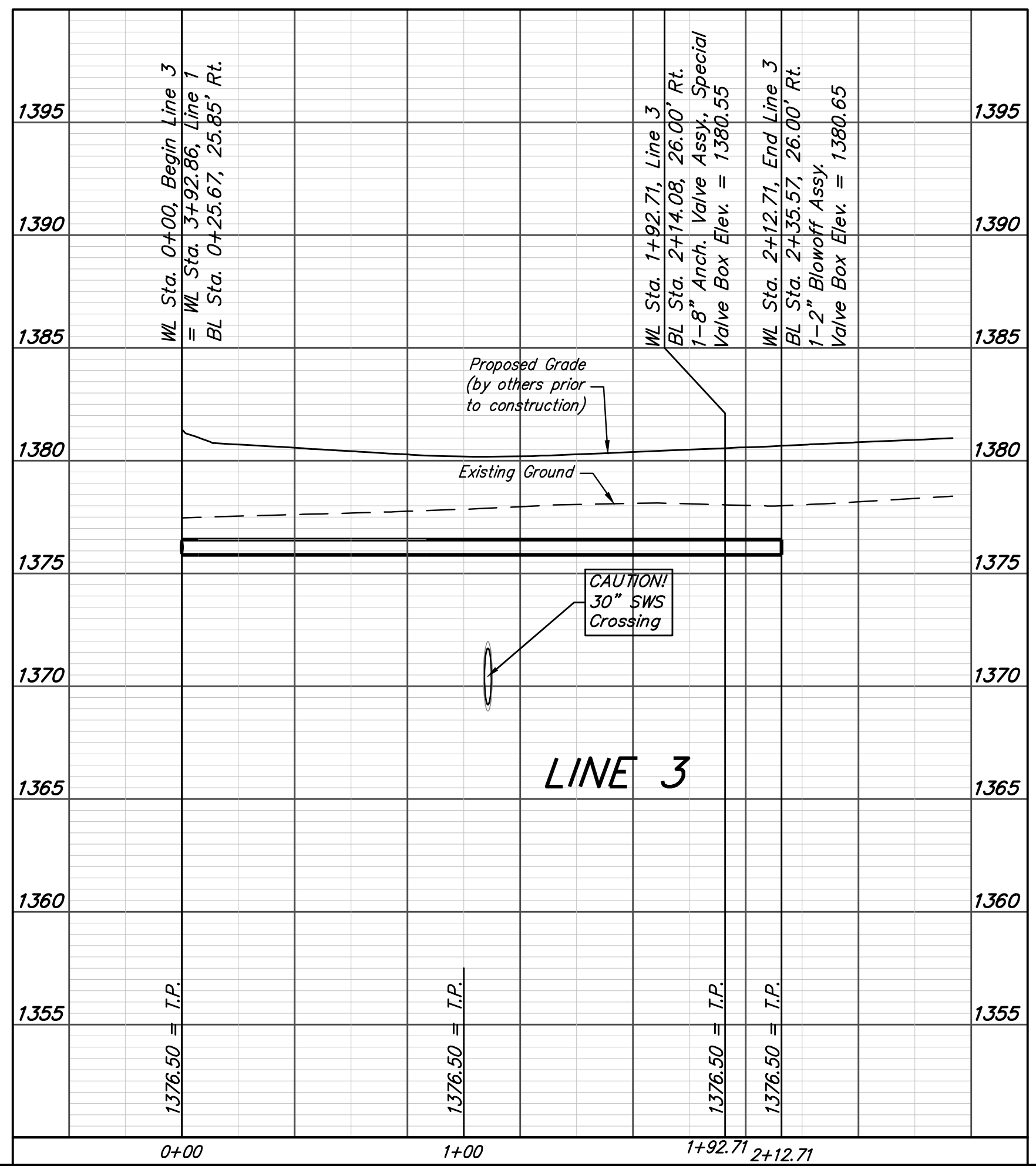
Curve #11
 Curve Data Based on Centerline of Pipe
 Rad. = 267' Delta = 18°07'29" Tangent = 42.59'
 Arc = 84.46' L.C. = 84.11' Def./Ft. = 6.43786 Min.

Station	Arc	Chord 8' Left	Defl.	Total Defl.
2+39.86	-	-	0°00'00"	0°00'00"
2+50.00	10.14'	9.84'	1°05'17"	1°05'17"
2+75.00	25.00'	24.24'	2°40'57"	3°46'14"
3+00.00	25.00'	24.24'	2°40'56"	6°27'10"
3+24.32	24.32'	23.58'	2°36'34"	9°03'44"



FIRE HYDRANTS REQUIRED

STATION	BURY LINE ELEVATION	TOP OF PIPE ELEVATION	FIRE HYDRANT BURY REQUIRED*	VALVE STEM EXT. REQUIRED (ft)*
0+62.71	1378.70	1374.85	4.5	-



Baughman Brookfield Addition - Phase I
LINE 3 & LINE 4
 Water Distribution System

Baughman Company, P.A. 315 Ellis St. Wichita, KS 67211 P 316-262-7271 F 316-262-0149
 ENGINEERING | SURVEYING | PLANNING | LANDSCAPE ARCHITECTURE

PROJECT NUMBER: 448-90787
 DESIGN: AEG
 DRAWN: JAK
 APPROVED: [Signature]
 DATE: 6/30/17

REVISIONS:

SCALE: Noted
 SHEET: **8 OF 21**

E:\Projects\BrookfieldAddition_1604P190\Engineering\Phase I\WTR_1608-E541\WTR_PLANS.dwg