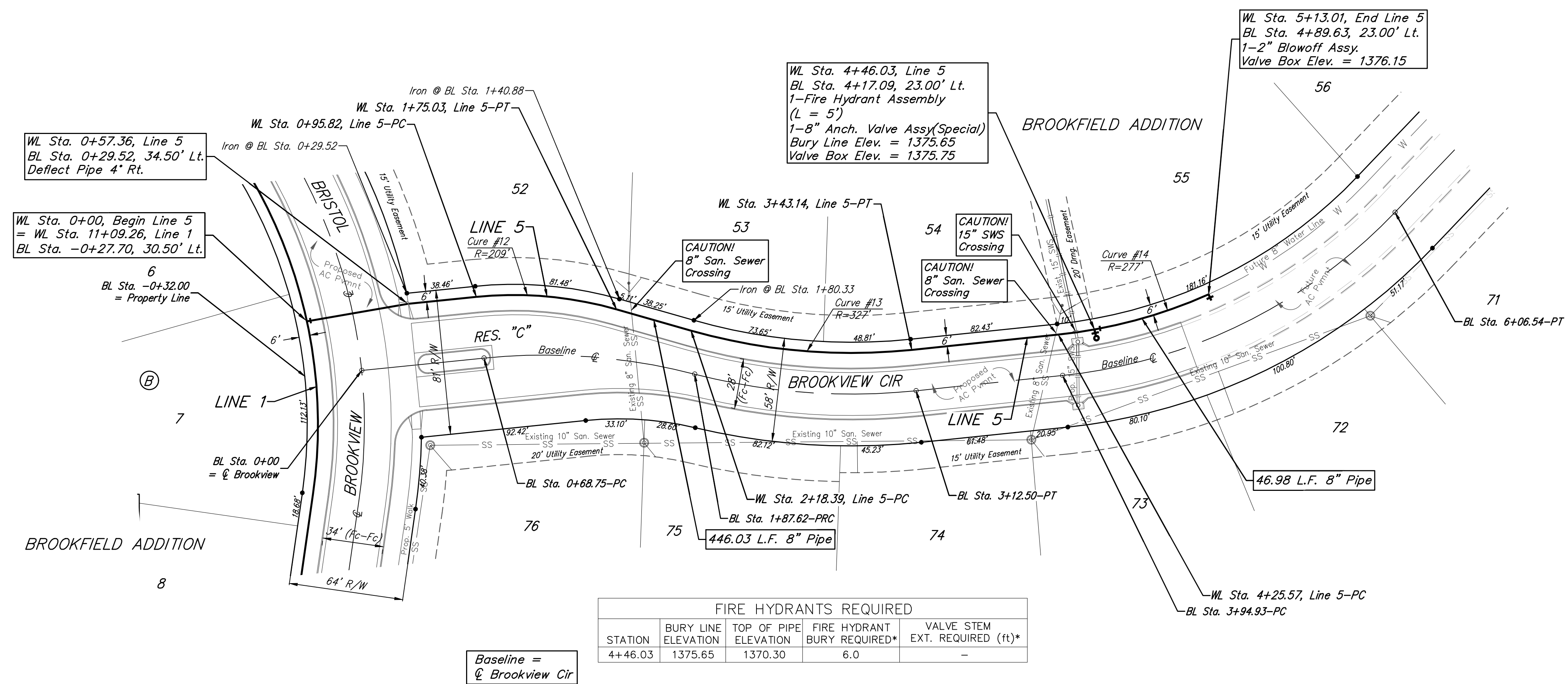


BENCHMARKS:
 RR spike in asphalt, SW COR., N1/2, SW1/4, Sec. 34, TWP. 26-S, R-2-E. Elev. = 1400.59 NAVD88

RR spike in E. face of power pole, 174± N. of S. line, N1/2, SW1/4 & 49± E. of W. line, SW1/4, Sec. 34, TWP. 26-S, R-2-E. Elev. = 1398.64 NAVD88

RR spike in S. face of power pole, 294± S. of N. line, SW1/4, & 48± E. of W. line, SW1/4, Sec. 34, TWP. 26-S, R-2-E. Elev. = 1386.14 NAVD88



Curve #12
 Curve Data Based on Centerline of Pipe
 Rad. = 209' Delta = 21°42'54" Tangent = 40.09'
 Arc = 79.21' L.C. = 78.74' Def./Ft. = 8.22434 Min.

Station	Arc	Chord	8' Left	Defl.	Total Defl.
0+95.82	-	-	0'00"00"	0'00"00"	0'00"00"
1+00.00	4.18'	4.34'	0'34'23"	0'34'23"	0'34'23"
1+25.00	25.00'	25.94'	3'25'36"	3'59'59"	3'59'59"
1+50.00	25.00'	25.94'	3'25'37"	7'25'36"	7'25'36"
1+75.03	25.03'	25.97'	3'25'51"	10'51'27"	10'51'27"

Curve #13
 Curve Data Based on Centerline of Pipe
 Rad. = 327' Delta = 21°51'29" Tangent = 63.14'
 Arc = 124.75' L.C. = 123.99' Def./Ft. = 5.25645 Min.

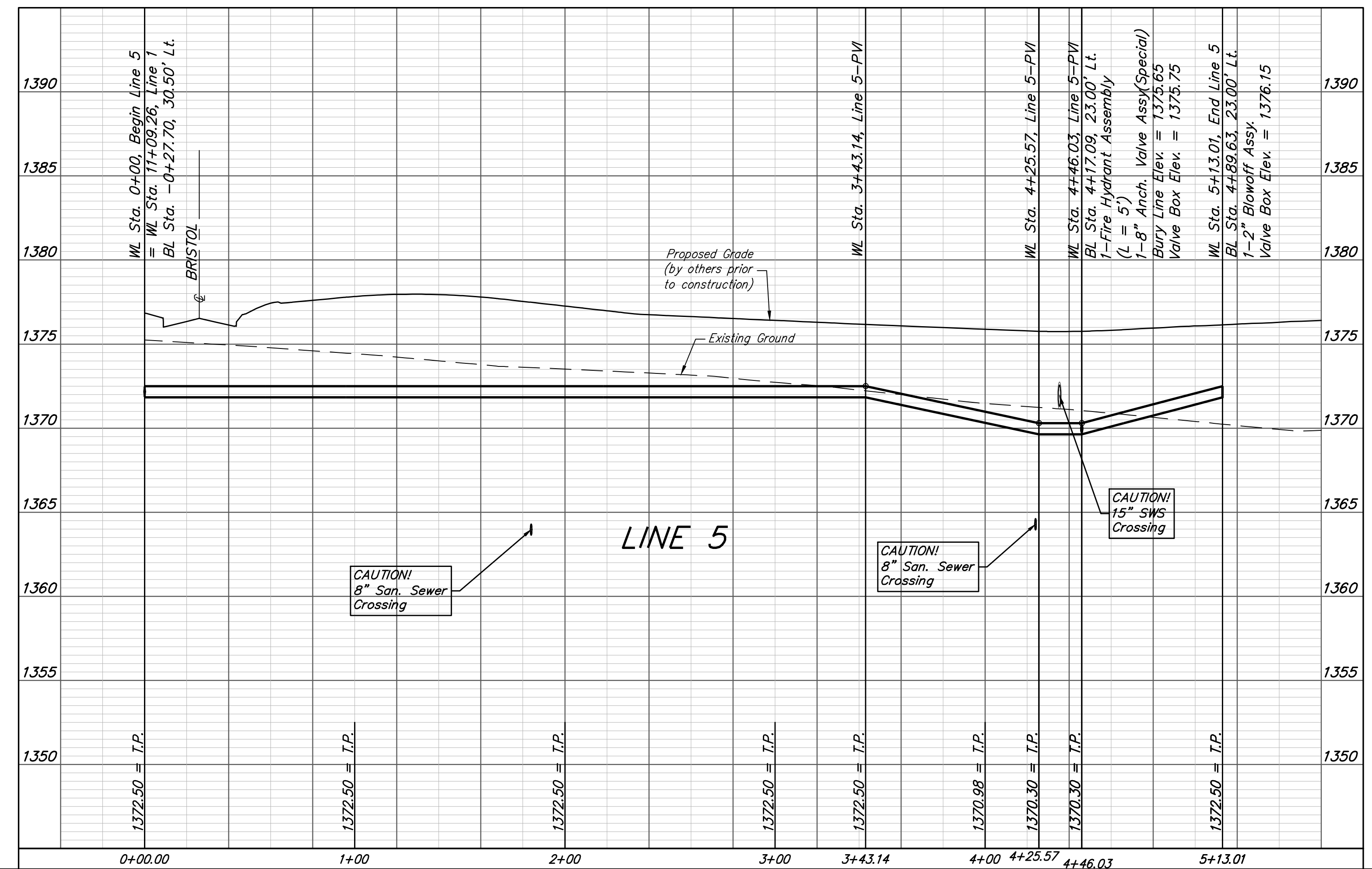
Station	Arc	Chord	8' Left	Defl.	Total Defl.
2+18.39	-	-	0'00"00"	0'00"00"	0'00"00"
2+25.00	6.61'	6.45'	0'34'45"	0'34'45"	0'34'45"
2+50.00	25.00'	24.38'	2'11'24"	2'46'09"	2'46'09"
2+75.00	25.00'	24.38'	2'11'25"	4'57'34"	4'57'34"
3+00.00	25.00'	24.38'	2'11'25"	7'08'59"	7'08'59"
3+25.00	25.00'	24.38'	2'11'24"	9'20'23"	9'20'23"
3+43.14	18.14'	17.69'	1'35'22"	10'55'45"	10'55'45"

Curve #14
 Curve Data Based on Centerline of Pipe
 Rad. = 277' Delta = 18°05'10" Tangent = 44.09'
 Arc = 87.44' L.C. = 87.08' Def./Ft. = 6.20521 Min.

Station	Arc	Chord	8' Left	Defl.	Total Defl.
4+25.57	-	-	0'00"00"	0'00"00"	0'00"00"
4+46.03	20.46'	19.86'	2'06'58"	2'06'58"	2'06'58"
4+50.00	3.97'	3.86'	0'24'38"	2'31'36"	2'31'36"
4+75.00	25.00'	24.27'	2'35'07"	5'06'43"	5'06'43"
4+93.01	18.01'	17.49'	1'51'46"	6'58'29"	6'58'29"
5+00.00	6.99'	6.79'	0'43'22"	7'41'51"	7'41'51"
5+13.01	13.01'	12.63'	1'20'44"	9'02'35"	9'02'35"

FIRE HYDRANTS REQUIRED

STATION	BURY LINE ELEVATION	TOP OF PIPE ELEVATION	FIRE HYDRANT BURY REQUIRED*	VALVE STEM EXT. REQUIRED (ft)*
4+46.03	1375.65	1370.30	6.0	-



Baughman Brookfield Addition - Phase I
LINE 5
 Water Distribution System

Baughman Company, P.A. 315 Ellis St. Wichita, KS 67211 P 316-262-7271 F 316-262-0149
 ENGINEERING | SURVEYING | PLANNING | LANDSCAPE ARCHITECTURE

PROJECT NUMBER: 448-90787 DESIGN: AEG DRAWN: JAK
 APPROVED: DATE: 6/30/17

REVISIONS:

SCALE: Noted SHEET: **9 OF 21**

\\Projects\Brookfield Addition_1604P190\Engineering\Phase I\WTR_1608E542\WTR PLANS.dwg