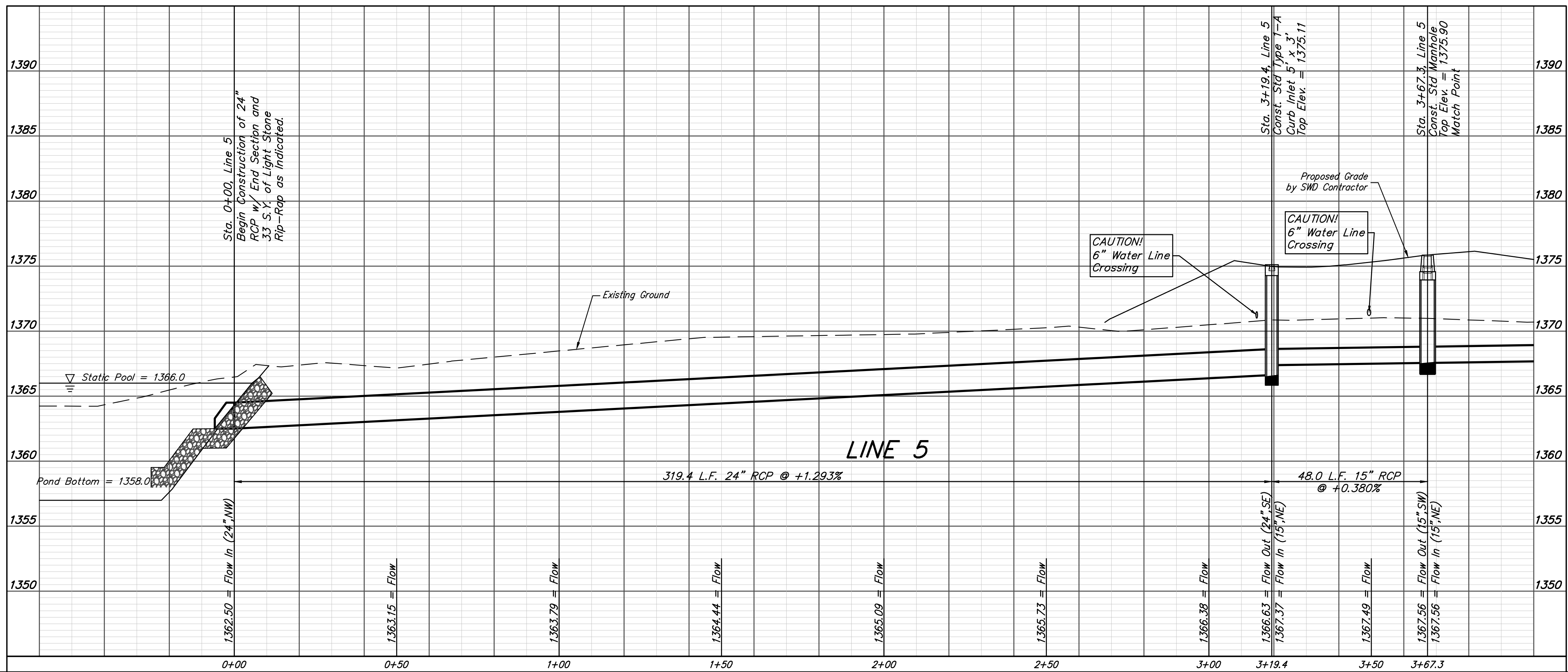
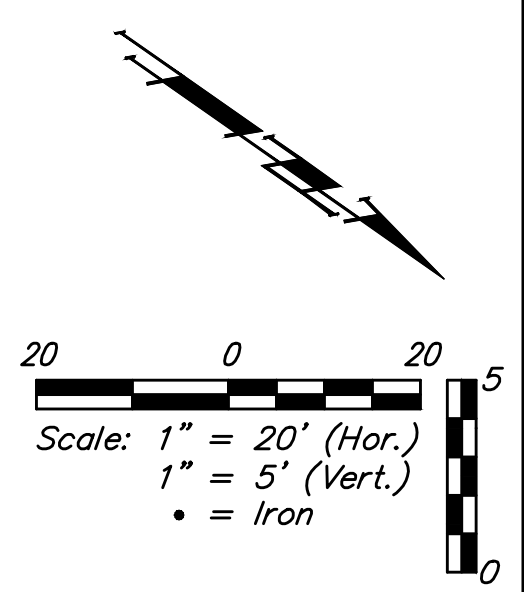
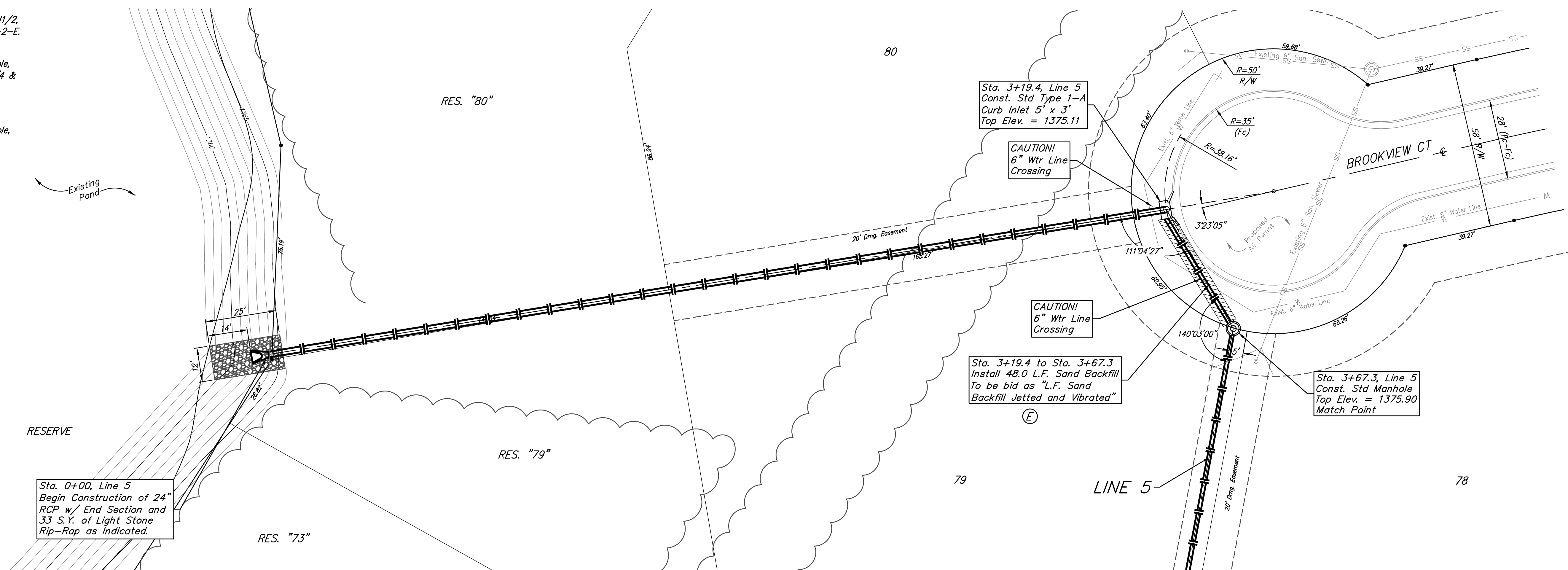


**BENCHMARKS:**  
 RR spike in asphalt, SW COR., N1/2, SW1/4, Sec. 34, TWP. 26-S, R-2-E. Elev. = 1400.59 NAVD88  
 RR spike in E. face of power pole, 174± N. of S. line, N1/2, SW1/4 & 49± E. of W. line, SW1/4, Sec. 34, TWP. 26-S, R-2-E. Elev. = 1398.64 NAVD88  
 RR spike in S. face of power pole, 294± S. of N. line, SW1/4, & 48± E. of W. line, SW1/4, Sec. 34, TWP. 26-S, R-2-E. Elev. = 1386.14 NAVD88



|   |                |                                |                 |
|---|----------------|--------------------------------|-----------------|
| <b>Baughman</b>   |                | Brookfield Addition - Phase I  |                 |
|   |                | <b>LINE 5</b>                  |                 |
|   |                | Storm Water Sewer Improvements |                 |
| Baughman Company, P.A. 315 Ellis St. Wichita, KS 67211 P 316-262-7271 F 316-262-0149<br>ENGINEERING   SURVEYING   PLANNING   LANDSCAPE ARCHITECTURE |                |                                |                 |
| PROJECT NUMBER<br>472-85344   | DESIGN<br>AEG  | DRAWN<br>JAK                   |                 |
| REVISIONS:  | APPROVED       | DATE<br>6/30/17                |                 |
|   | SCALE<br>Noted |                                |                 |
|   | SHEET          |                                | <b>26 OF 56</b> |

E:\Projects\Brookfield Addition - 1604F190\Engineering\Phase I\STR\_1608E541\SW\PLANS.dwg