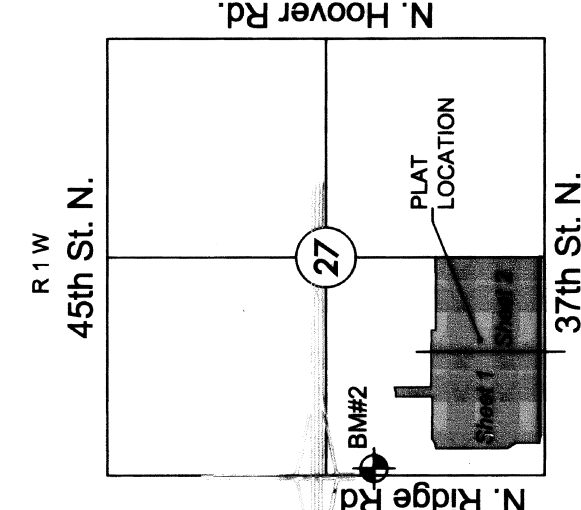


FINAL PLAT

ESTANCIA ADDITION

AN ADDITION TO WICHITA, SEDGWICK COUNTY, KANSAS

A=16°23'29"
R=400.00
L=144.04'
CB=180°13'08"E



VICINITY MAP



Date of Survey, April 29, 2015

LEGEND

- △ = Section corner monument found
- ⊙ = Found 3/4" rebar w/ MKEC CLS 39 id. cap
- = Set 3/4" rebar w/ MKEC CLS 39 id. cap
- (M) = Measured
- (CM) = Calculated from measured
- (D) = Described
- ⊙ = Benchmark
- U.E. = Utility Easement
- D.E. = Drainage Easement

1"=60' / 1:720



Basis of Bearing: Kansas coordinate system of 1983
south zone grid bearing of N88°46'20"E on the south
line of the SW 1/4, Sec. 27, T26S, R1W, 6th P.M.
This plat is surveyed and platted on NAD83 using
Kansas state plane south zone coordinates, modified to
the surface, having a combined adjustment scale factor
of 1.000120014401728

BENCHMARK

BM#2
Square cut top of curb on west side of median island
and 10 foot north of the south end of said median lying
south of K-96 and Ridge Rd. (being 336 feet S. of the
NW corner SW 1/4, Sec. 27, T26S, R1W, 6th P.M.)
Elev. = 1335.80 NAVD88

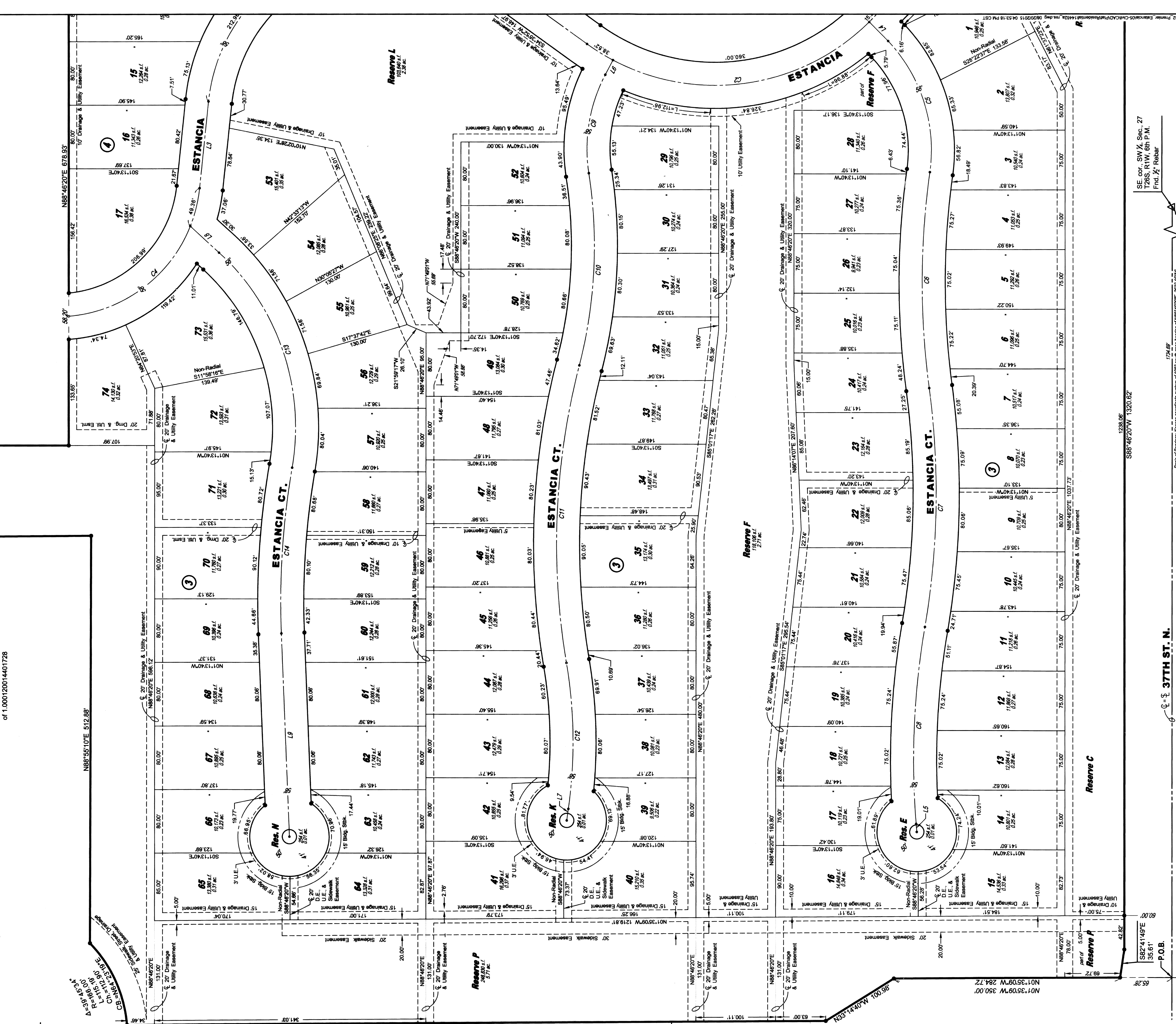
| MINIMUM ROAD ELEVATIONS (LOWEST FORMAS) | LOTS | BLOCK ELEVATION M412.69 |
|--|------|----------------------------|
| 15 - 41 | 3 | 1334.1 |
| 49 - 56 | 3 | 1334.1 |
| 64 - 74 | 3 | 1334.1 |

NW cor., SW 1/4,
Sec. 27, T26S,
R1W, 6th P.M.
Frd. 1" Cut

P.O.C.
SW cor., SW 1/4, Sec. 27,
T26S, R1W, 6th P.M.
Frd. Mag nail in asphalt
roadway

P.O.B.
S88°46'20"W 1320.82'

SE cor., SW 1/4, Sec. 27,
T26S, R1W, 6th P.M.
Frd. 1" Rebar



37TH ST. N.

