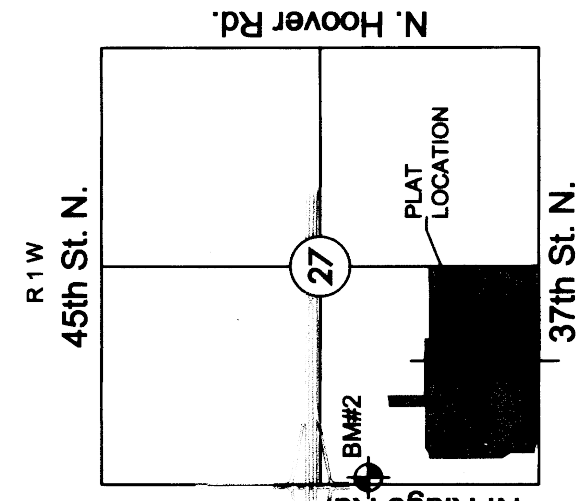


# FINAL PLAT

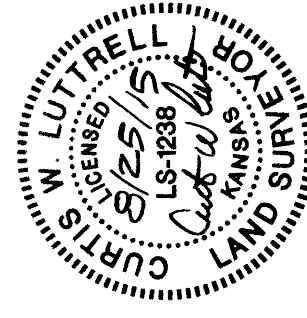
## ESTANCIA ADDITION

AN ADDITION TO WICHITA, SEDGWICK COUNTY, KANSAS

A=16°23'29"  
R=400.00  
L=144.04'  
CB=180°13'08"E



VICINITY MAP



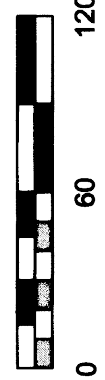
### LEGEND

- △ = Section corner monument found
- ⊙ = Found 3/4" rebar w/ MKEC CLS 39 id. cap
- = Set 3/4" rebar w/ MKEC CLS 39 id. cap
- = Measured
- (CM) = Calculated from measured
- (D) = Described
- ⊕ = Benchmark
- U.E. = Utility Easement
- D.E. = Drainage Easement

Date of Survey, April 28, 2015

△ = Section corner monument found  
 ⊙ = Found 3/4" rebar w/ MKEC CLS 39 id. cap  
 ● = Set 3/4" rebar w/ MKEC CLS 39 id. cap  
 ○ = Measured  
 (CM) = Calculated from measured  
 (D) = Described  
 ⊕ = Benchmark  
 U.E. = Utility Easement  
 D.E. = Drainage Easement

1"=60' / 1:720



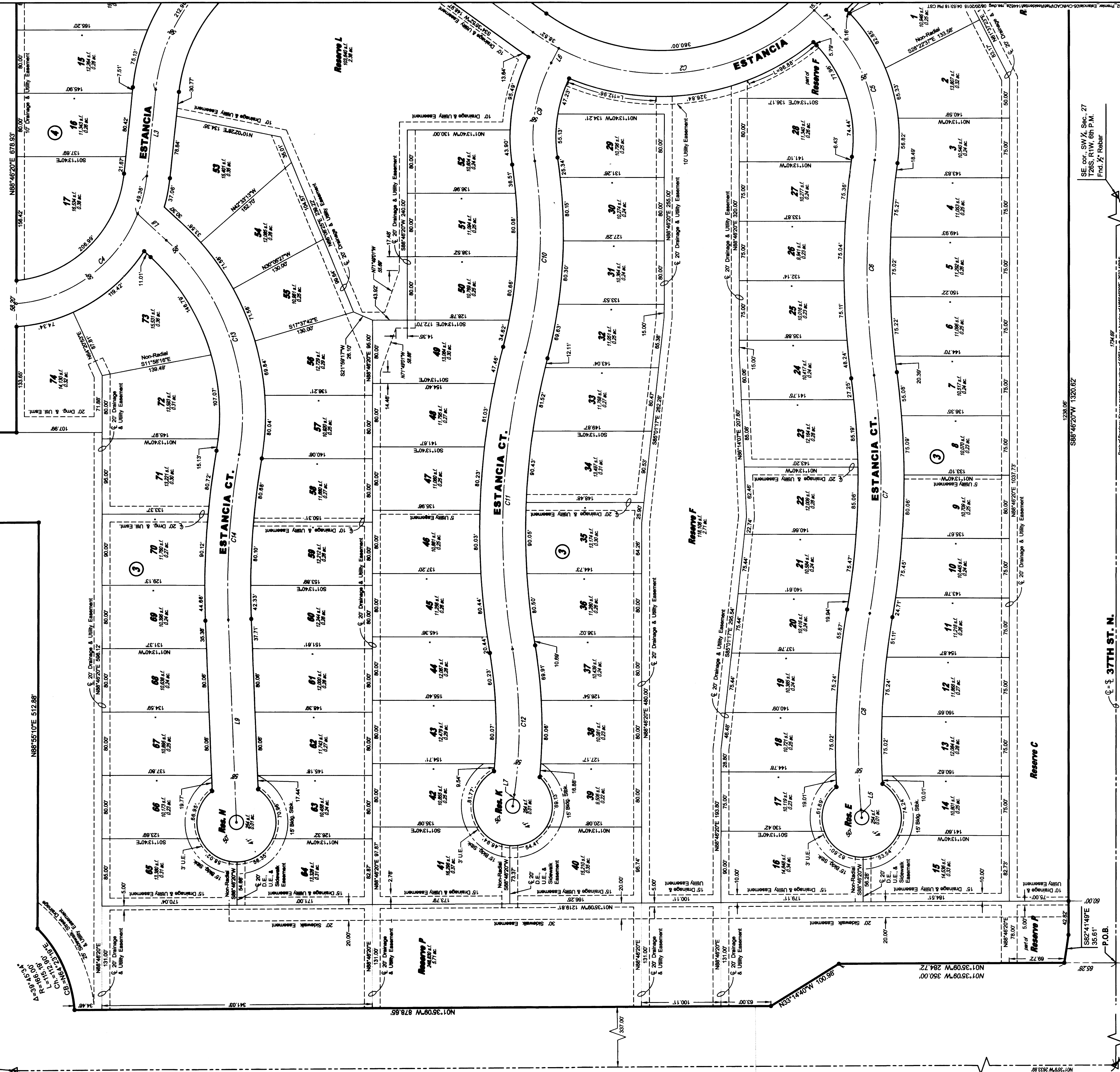
Basis of Bearing: Kansas coordinate system of 1983  
 south zone grid bearing of N88°46'20"E on the south  
 line of the SW 1/4, Sec. 27, T26S, R1W, 6th P.M.  
 This plat is surveyed and platted on NAD83 using  
 Kansas state plane south zone coordinates, modified to  
 the surface, having a combined adjustment scale factor  
 of 1.000120014401728

### BENCHMARK

BM#2  
 Square cut top of curb on west side of median island  
 and 10 foot north of the south end of said median lying  
 south of K-96 and Ridge Rd. (being 336 feet S. of the  
 NW corner SW 1/4, Sec. 27, T26S, R1W, 6th P.M.)  
 Elev. = 1335.80 NAVD88

MINIMUM ROAD ELEVATIONS (LOWEST POINTS)	LOTS	BLOCK ELEVATION	MINIMUM ROAD ELEVATIONS (LOWEST POINTS)		
45-41	3	1334.1	48-56	3	1334.1
64-74	3	1334.1			

NW cor., SW 1/4,  
 Sec. 27, T26S,  
 R1W, 6th P.M.  
 Fnd. 3" CUI



Q-S 37TH ST. N.

P.O.C.  
 SW cor., SW 1/4, Sec. 27,  
 T26S, R1W, 6th P.M.  
 Fnd. 3" Mag nail in asphalt  
 roadway

State of Kansas, Sedgwick County, Wichita, Kansas  
 Complete Access Control 1308.05  
 State of Kansas, Sedgwick County, Wichita, Kansas  
 Complete Access Control 1308.05

