

FINAL PLAT ESTANCIA ADDITION AN ADDITION TO WICHITA, SEDGWICK COUNTY, KANSAS

NE 1/4 SW 1/4 Sec. 27,
T26S R1W 6th P.M.
Fnd. Limestone 1.5' deep
with diolite in center



SE cor., SW 1/4, Sec. 27,
T26S, R1W, 6th P.M.
Fnd. 1/2 Rebar

Complete Access Control 146.70'

One Full
Movement
Emergency
Access
Opening
80.00'

One Full
Movement
Emergency
Access
Opening
80.00'

Complete Access Control 579.85'

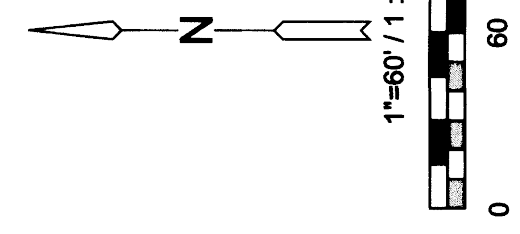
One Full
Movement
Emergency
Access
Opening
150.00'

SE cor., SW 1/4, Sec. 27,
T26S, R1W, 6th P.M.
Fnd. 1/2 Rebar

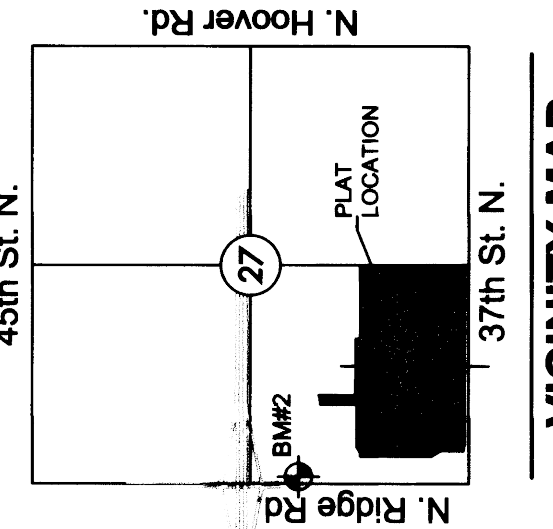
BENCHMARK

BM#5 Square cut top of curb on west side of median island and 10 feet north of the south end of said median lying south of K-96 and Ridge Rd. being 338 feet S. of the NW corner SW 1/4, Sec. 27, T26S, R1W, 6th P.M.) Elev. = 1335.80 NAVD85

MINIMUM PAD ELEVATIONS (LOWEST AREAS)	LOTS	BLOCK ELEVATION	AVOID REB
	1-48	2	1334.1
	5, 6, 13, 14	4	1334.1



- LEGEND**
- Date of Survey: April 29, 2015
- △ = Section corner monument found
 - ⊙ = Found 3/4 rebar w/ MKEC CLS 39 ft. cap
 - ⊙ = Set 3/4 rebar w/ MKEC CLS 39 ft. cap
 - (M) = Measured
 - (CM) = Calculated from measured
 - (D) = Described
 - ⊙ = Benchmark
 - U.E. = Utility Easement
 - D.E. = Drainage Easement



Basis of Bearing: Kansas coordinate system of 1983 south zone grid bearing of N88°46'20"E on the south of the SW 1/4, Sec. 27, T26S, R1W, 6th P.M.

The plat is surveyed and platted on NAD83 using Kansas state plane south zone coordinates, modified to the surface, having a combined adjustment scale factor of 1.00020014401728

