

STATE OF KANSAS

DEPARTMENT OF TRANSPORTATION



PLAN AND PROFILE OF PROPOSED

CENTRAL BRIDGE AT TARA

FEDERAL AID PROJECT

WICHITA, SEDGWICK COUNTY

CITY PROJECT NO. 472-83801 OCA 715896

STATE	PROJECT NO.	YEAR	SHEET NO.	TOTAL SHEETS
KANSAS	87 N-0203-01	2003	1	48

PROJ. NO. 87 N-0203-01  
BHM - N020 (301)

GRADING AND SURFACING  
STORM SEWER  
SIGNING AND PAVEMENT MARKING  
SEEDING  
BRIDGE

SCALE 1 : 1 000

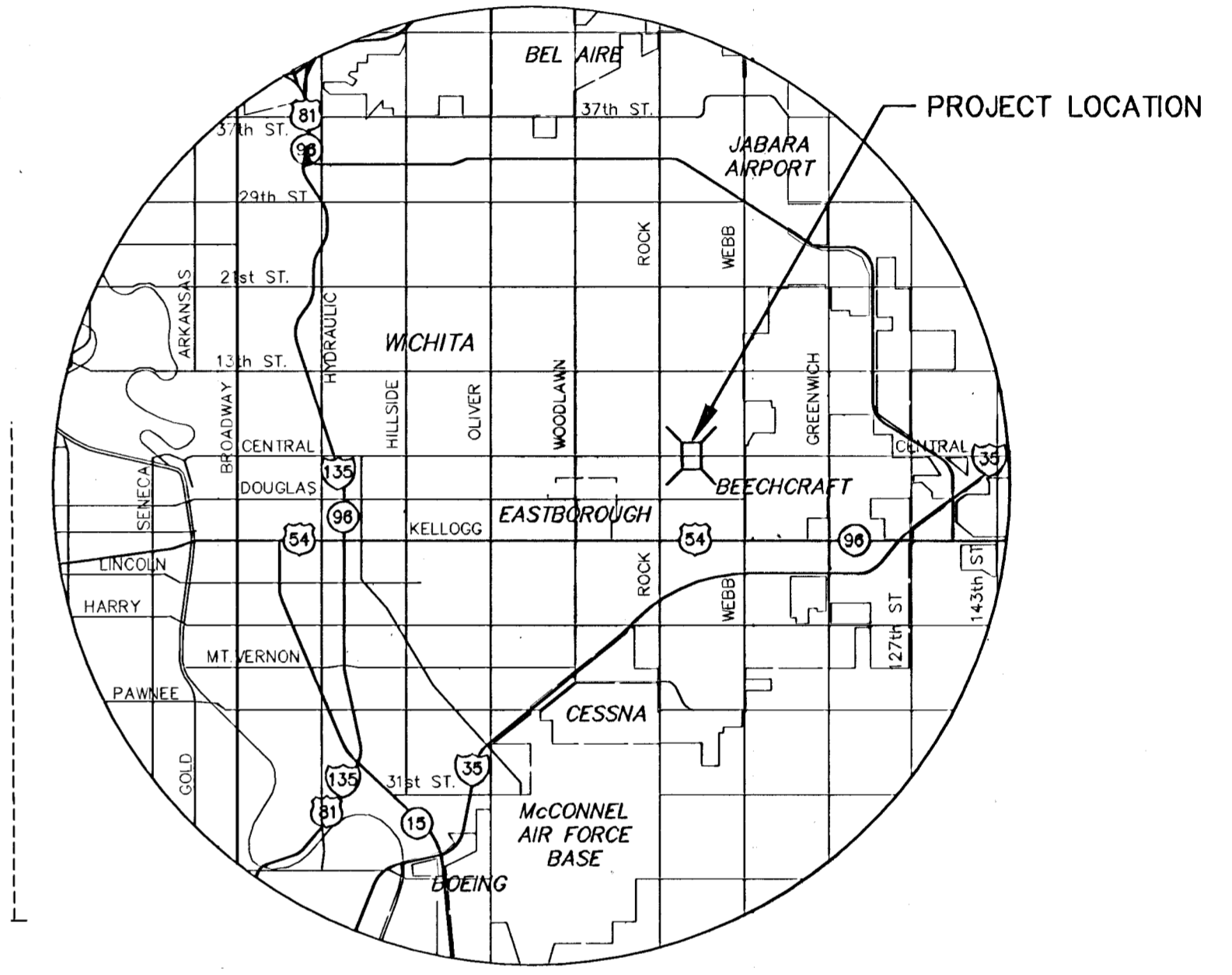
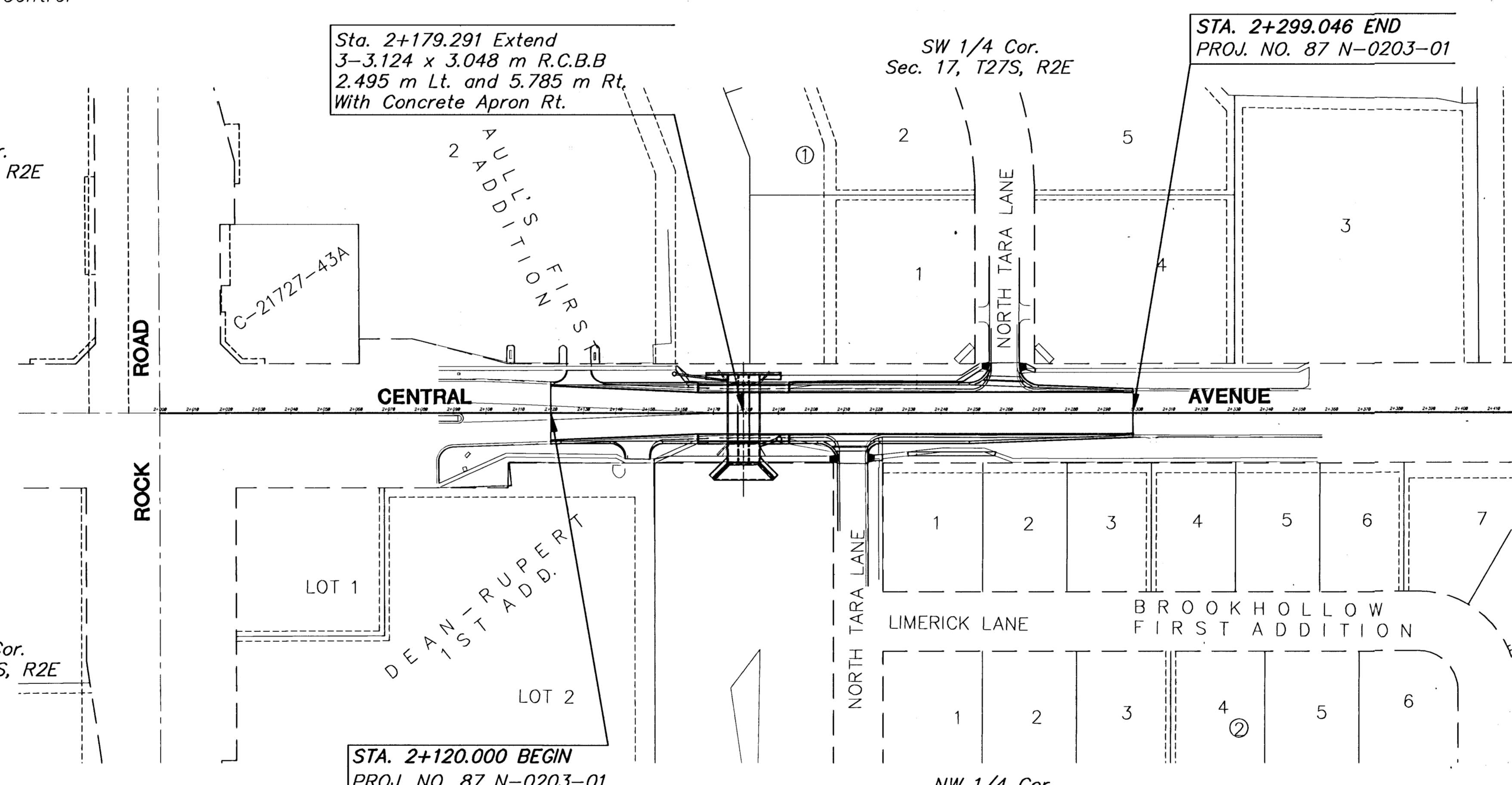
DATE	12-18-01
BY	MKEC
SURVEYED	DPG, JM
CAD TECHNICIAN	KUS, JA
DESIGNERS	TITSMORTH
SQUAD	

INDEX OF SHEETS

SHEET NO.	DESCRIPTION
1	Title Sheet
2	Typical Sections
3-6	Plan and Profile
7-13	Pavement Details
14	Inlet and Manhole Details
15	Contour Map
16-19	RCBB Details
20	RCB Auxiliary Details
21	Culvert Extensions (Typical)
22	Handrail Details
23	Bridge Excavation
24	Supports and Spacers for Reinforcing Steel
25	Bridge Plaque Detail
26	Summary of Quantities
27-33	Temporary Project Water Pollution Control
34	Seeding
35-37	Signing and Pavement Marking
38	Construction Sequence
38.001-43	Traffic Control
44-48	Cross Sections

DESIGN DESIGNATION

AADT (1999)	=	16,659
AADT (2029)	=	22,250
DHV	=	10 %
D	=	60 %
T	=	10 %
V	=	65 KPH
Control of Access	=	PARTIAL
Clear Zone	=	0.5 m



LOCATION MAP  
POPULATION: 310,238

NOTE: Traffic to be carried through construction. Refer to Traffic Control sheets.



PREPARED & SUBMITTED BY  
MKEC ENGINEERING CONSULTANTS, INC.  
WICHITA, KANSAS

All Dimensions shown, without a SI suffix, are in millimeters. All elevations shown are in meters.

G:\CIVIL\079\TITLE\079SE1.DWG 01/07/03 09:48:42 PM CST

CONVENTIONAL SIGNS	DESCRIPTION
	COUNTY LINE
	CITY LIMITS
	STATE OR NATIONAL LINE
	TOWNSHIP, SECTION or GRANT LINE
	PROPERTY LINE
	HIGHWAY FENCE
	EXISTING FENCE
	GUARD FENCE
	CONSTRUCTION LIMITS
	RIGHT OF WAY LINE
	TRAVELED WAY
	RAILROADS
	CENTER LINE OF PROJECT
	TERRACE
	CULVERTS
	DROP INLET & STORM SEWER
	ACCESS CONTROL
	POWER POLE
	TELEPHONE POLE
	MARSH
	HEDGE
	TREES
	PROFILE ELEVATION
	STREAM or CREEK

GROSS LENGTH OF PROJECT	=	179.046 m
EXCEPTIONS	=	None
ADDITIONS	=	None
NET LENGTH OF PROJECT	=	179.046 m
NET LENGTH OF BRIDGES	=	10.265 m
NET LENGTH OF ROAD	=	179.046 m

APPROVED - DATE 9-10-03  
*Neil D. Cable*  
NEIL D. CABLE  
CITY ENGINEER  
PROJECT NO. 87 N-0203-01

RECOM. FOR APPROVAL-DATE
CHIEF, BUREAU OF LOCAL PROJECTS KANSAS DEPARTMENT OF TRANSPORTATION
APPROVED - DATE
STATE TRANSPORTATION ENGINEER KANSAS DEPARTMENT OF TRANSPORTATION