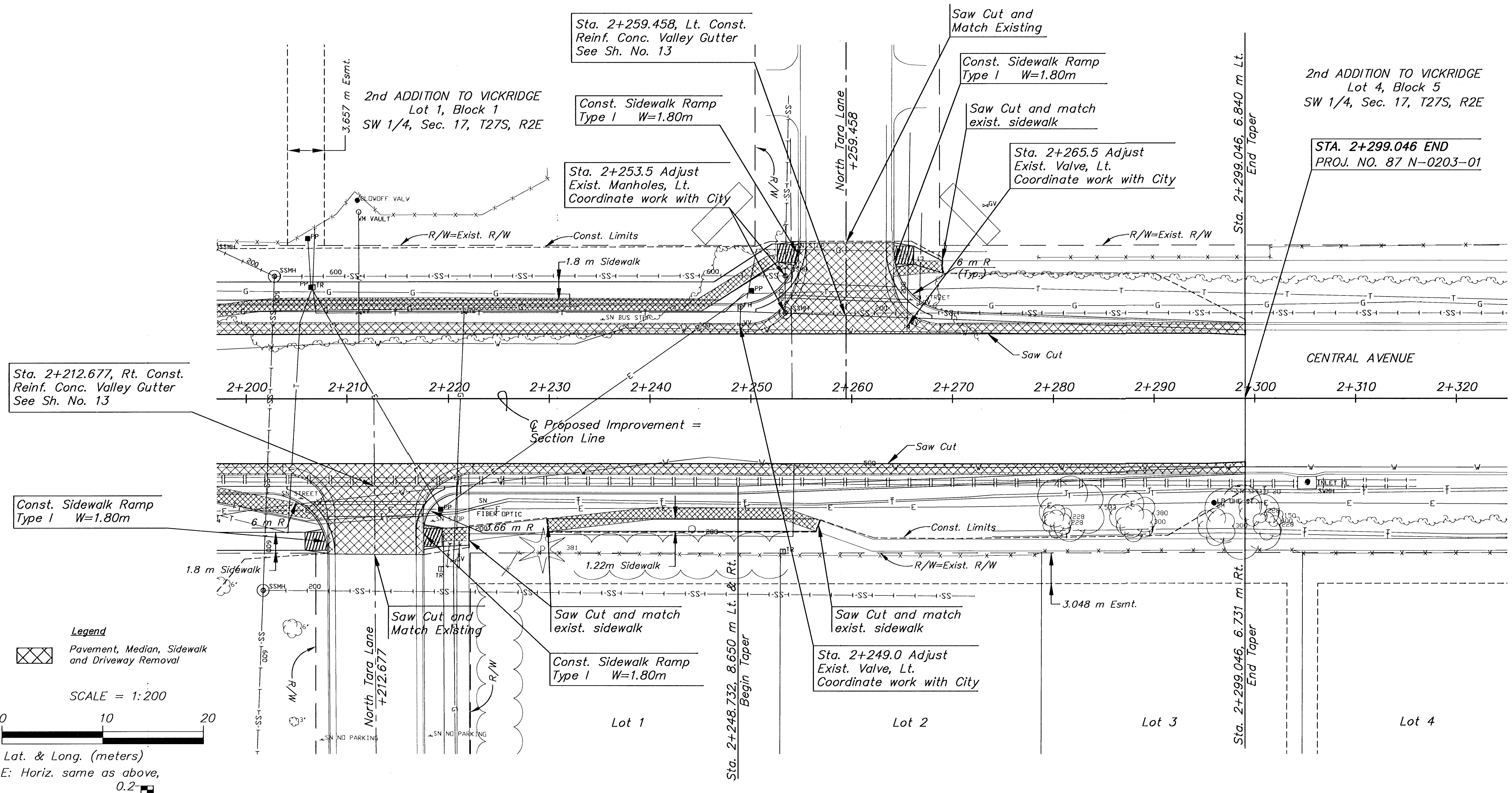
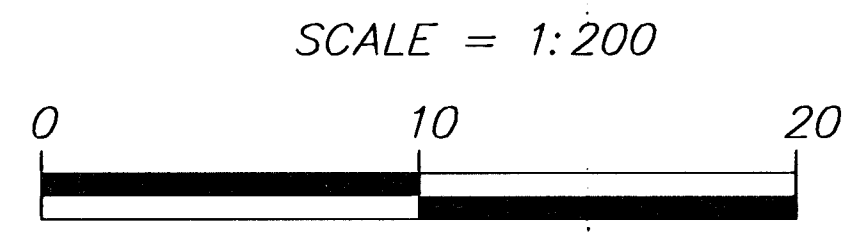


STATE	PROJECT NO.	YEAR	SHEET NO	TOTAL SHEETS
KANSAS	87 N-0203-01	2003	5	48

BY	DATE
REFERENCES NOTED	REFERENCES CHECKED



**Legend**  
 Pavement, Median, Sidewalk and Driveway Removal



PLAN: Lat. & Long. (meters)  
 PROFILE: Horiz. same as above,  
 Vert. SCALE: 1:20

**UTILITY OWNERS**

- TV - Cox Communications (316)262-4270
- G - Kansas Gas Service (316) 832-3122
- E - KGE (316) 261-6552
- SS - City of Wichita Water & Sewer Dept. (316) 268-4555
- SWS - City of Wichita Water & Sewer Dept. (316) 268-4555
- T - Southwestern Bell Telephone Co. (316) 268-2245
- W - City of Wichita Water & Sewer Dept. (316) 268-4555

BM RR Spike in N. Face of 1st PP E. of North Tara on S. side of Central STA. 2+295.930, 10.310 m South. Elev. = 412.241

BM RR Spike in NE Face of PP on S. side of Central and 2nd PP E. of Rock Road STA. 2+070.752, 17.202 m South. Elev. = 411.470

BM City of Wichita BM Disk set in NE Cor. of RCBB on Headwall at Tara and Gypsum Creek STA. 2+184.199, 9.323 m North. Elev. = 409.685

2				
1				
NO.	DATE	REVISIONS	BY	APP'D
KANSAS DEPARTMENT OF TRANSPORTATION				
<b>CENTRAL BRIDGE AT TARA</b>				
<b>STA. 2+200 TO STA. 2+300</b>				
PROJ. NO. 87 N-0203-01			SEDGWICK CO.	
<b>MKEC ENGINEERING CONSULTANTS, INC.</b>				
WICHITA, KANSAS				
DESIGNED BY:	KJS	CHECKED BY:	KJS	
DRAWN BY:	RSB	DATE:	JAN. 2003	SHEET 5 OF 48

G:\CIVIL\00095\PAVE\00095E.DWG 01/16/2003 04:44:21 PM CST