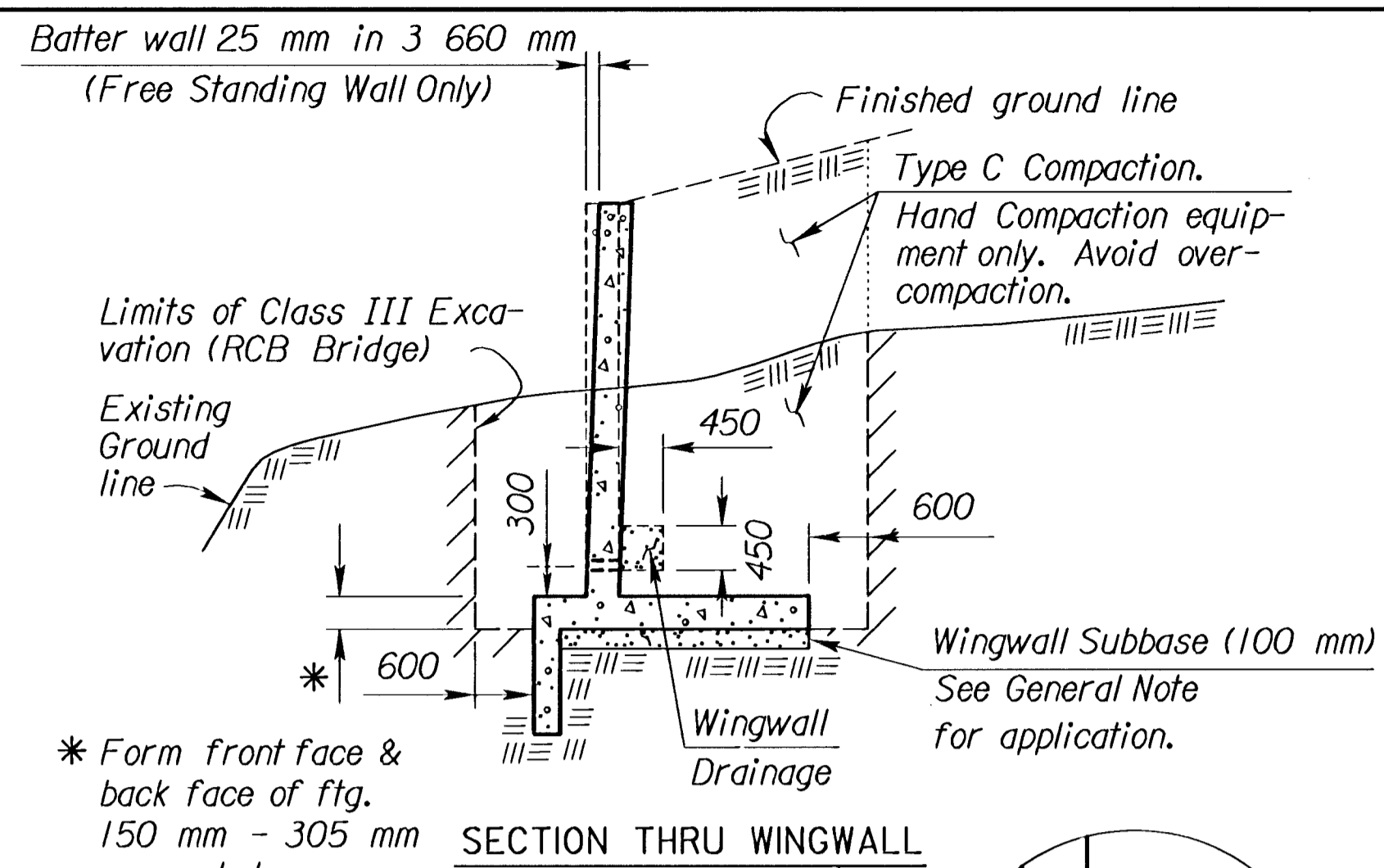
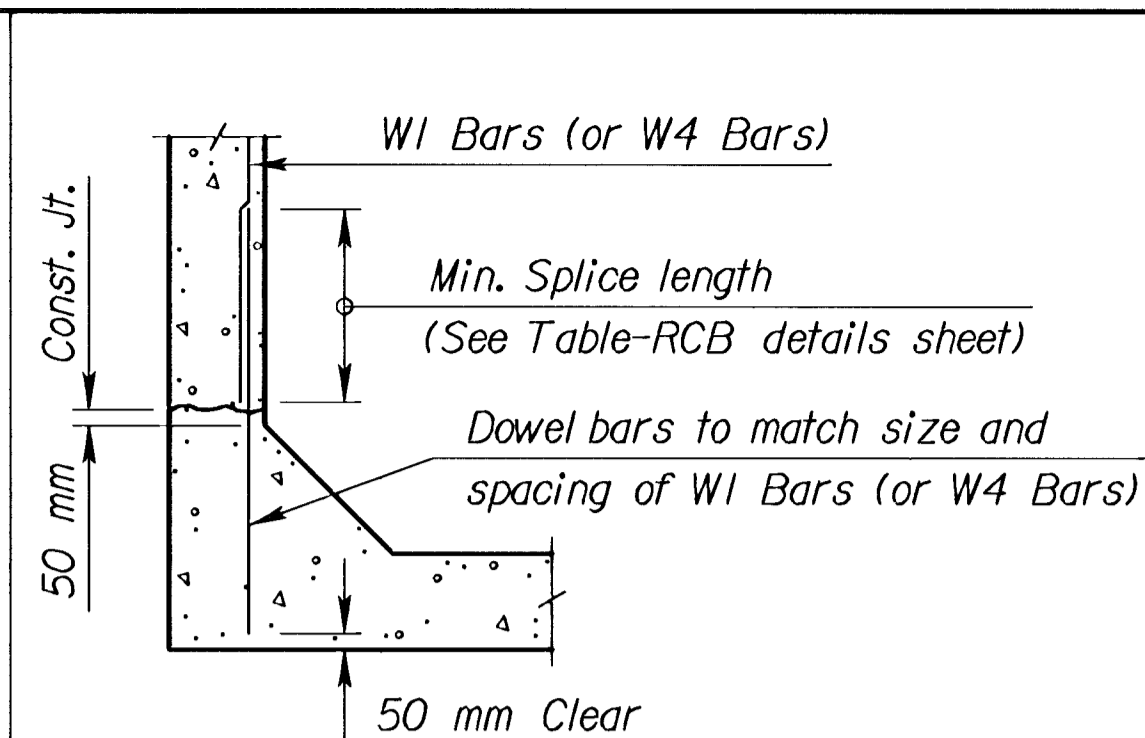


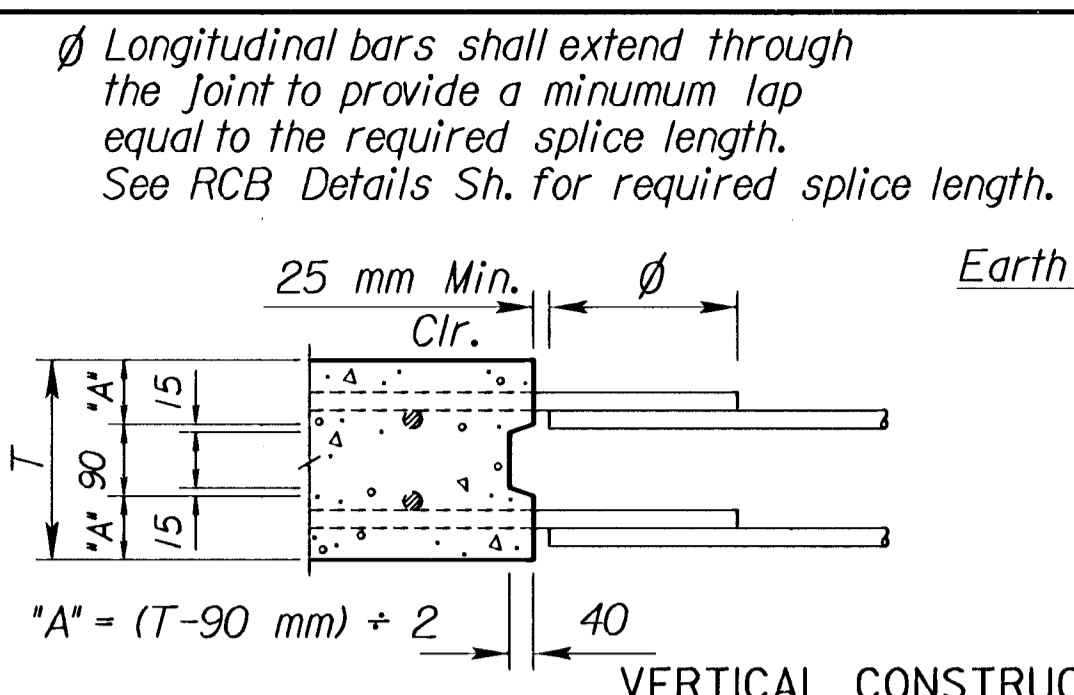
STATE	PROJECT NO.	YEAR	SHEET NO.	TOTAL SHEETS
KANSAS	87 N-0203-01	2003	20	48



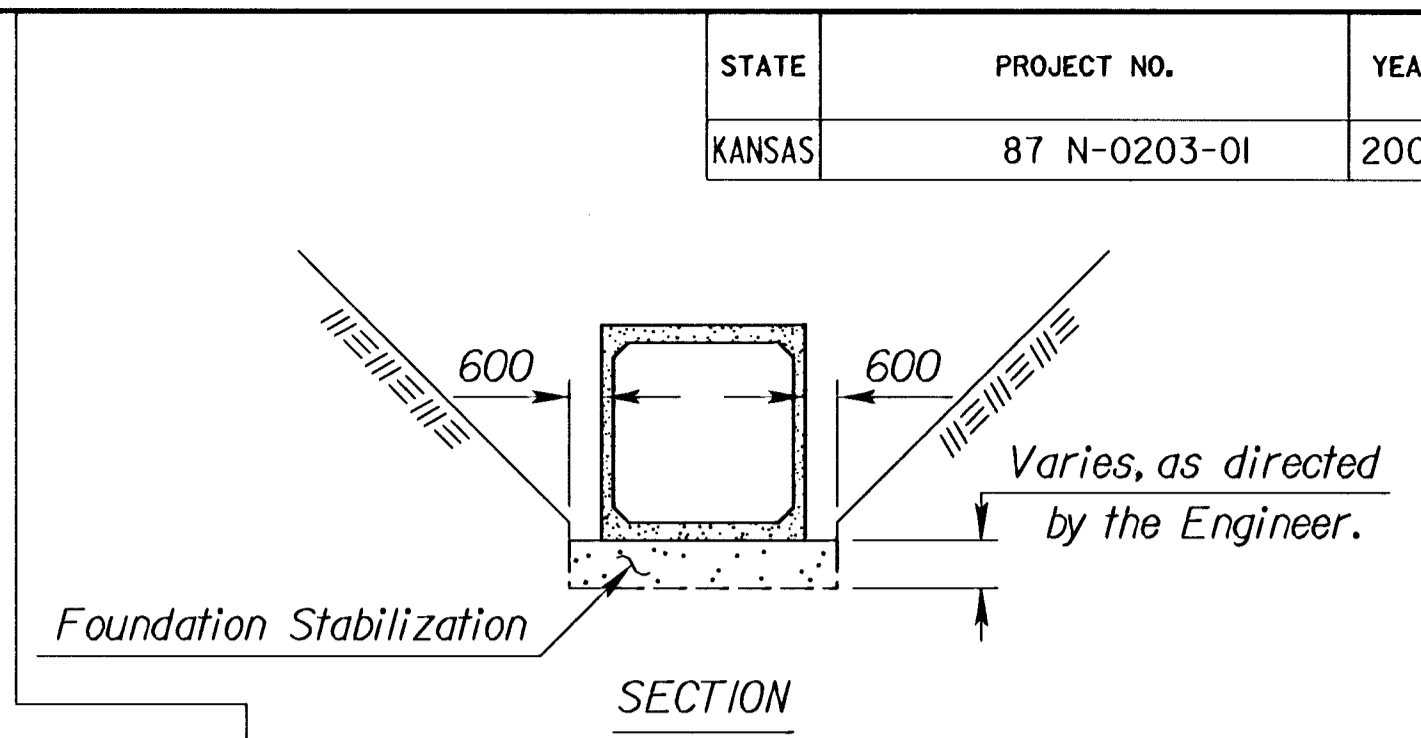
SECTION THRU WINGWALL



OPTIONAL BAR DETAIL



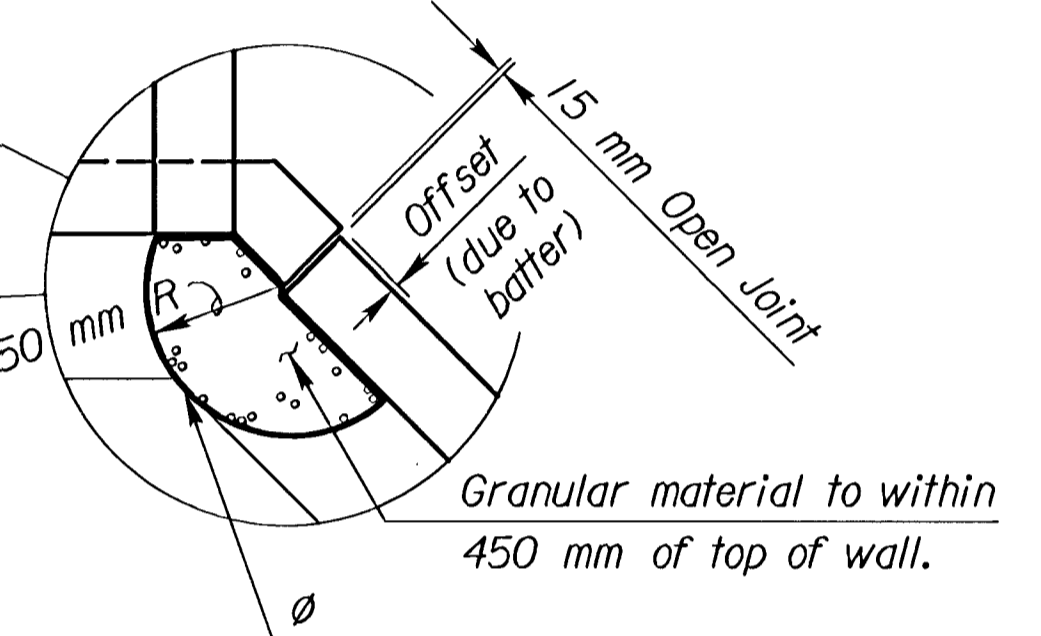
VERTICAL CONSTRUCTION JOINTS



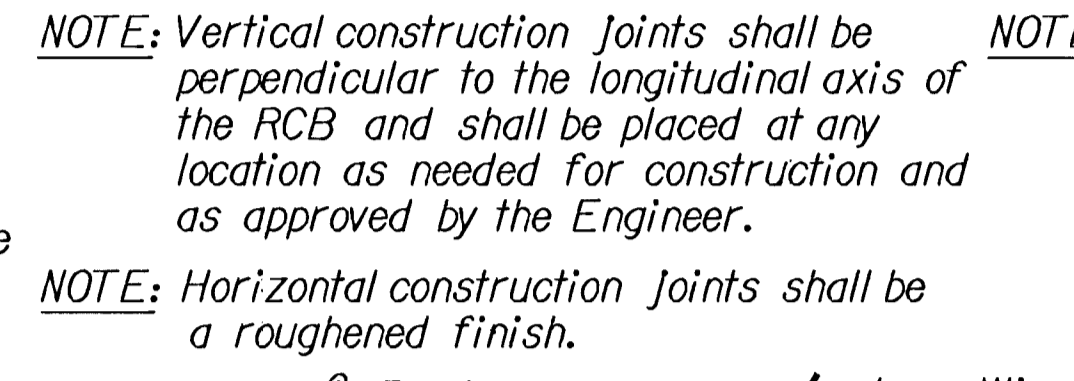
SECTION



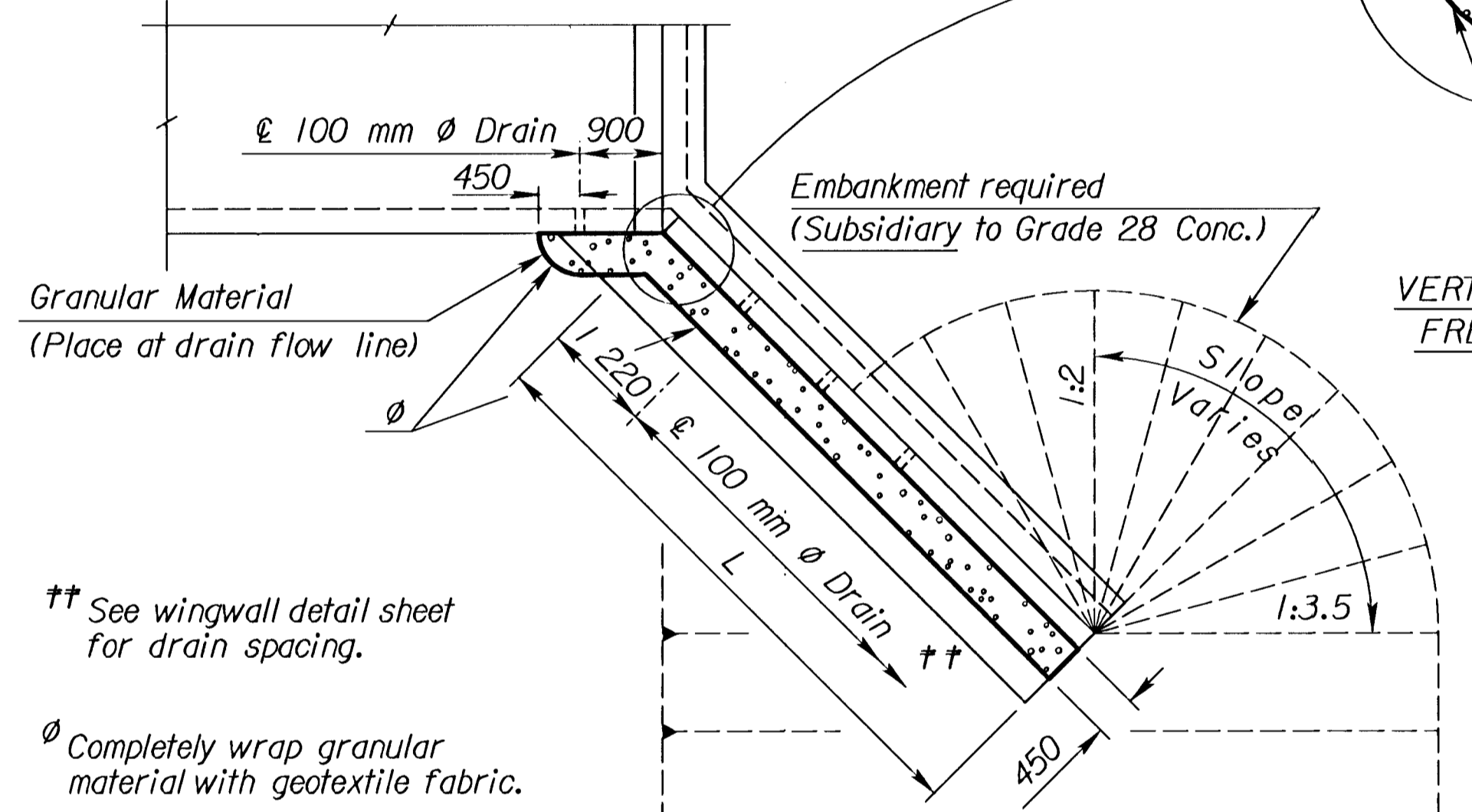
OPTIONAL STRIP DRAIN Detail 'A'



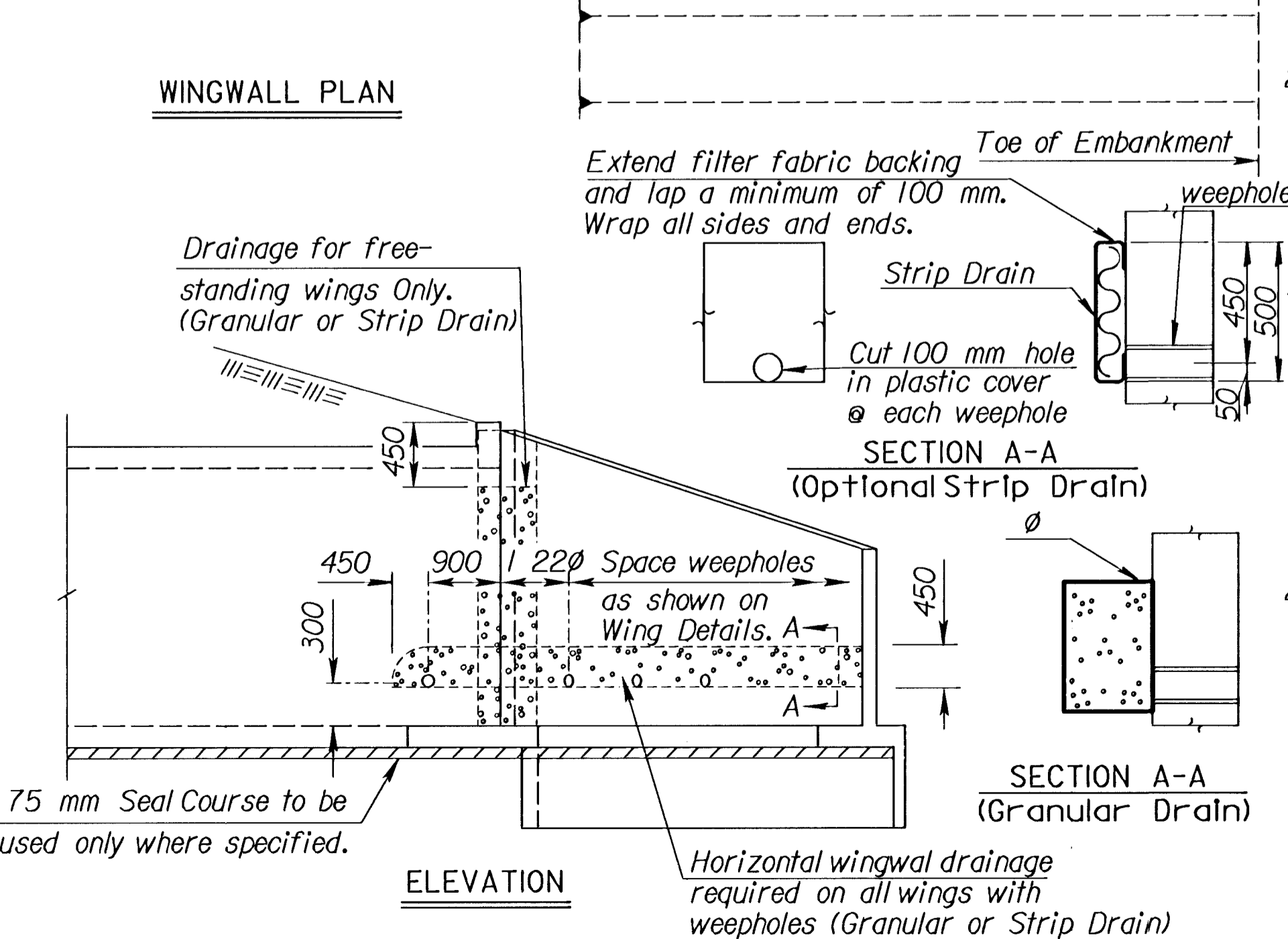
VERTICAL WINGWALL DRAINAGE FOR FREE-STANDING WINGWALLS ONLY



PLAN VIEW SKEWED R.C.B.



WINGWALL PLAN



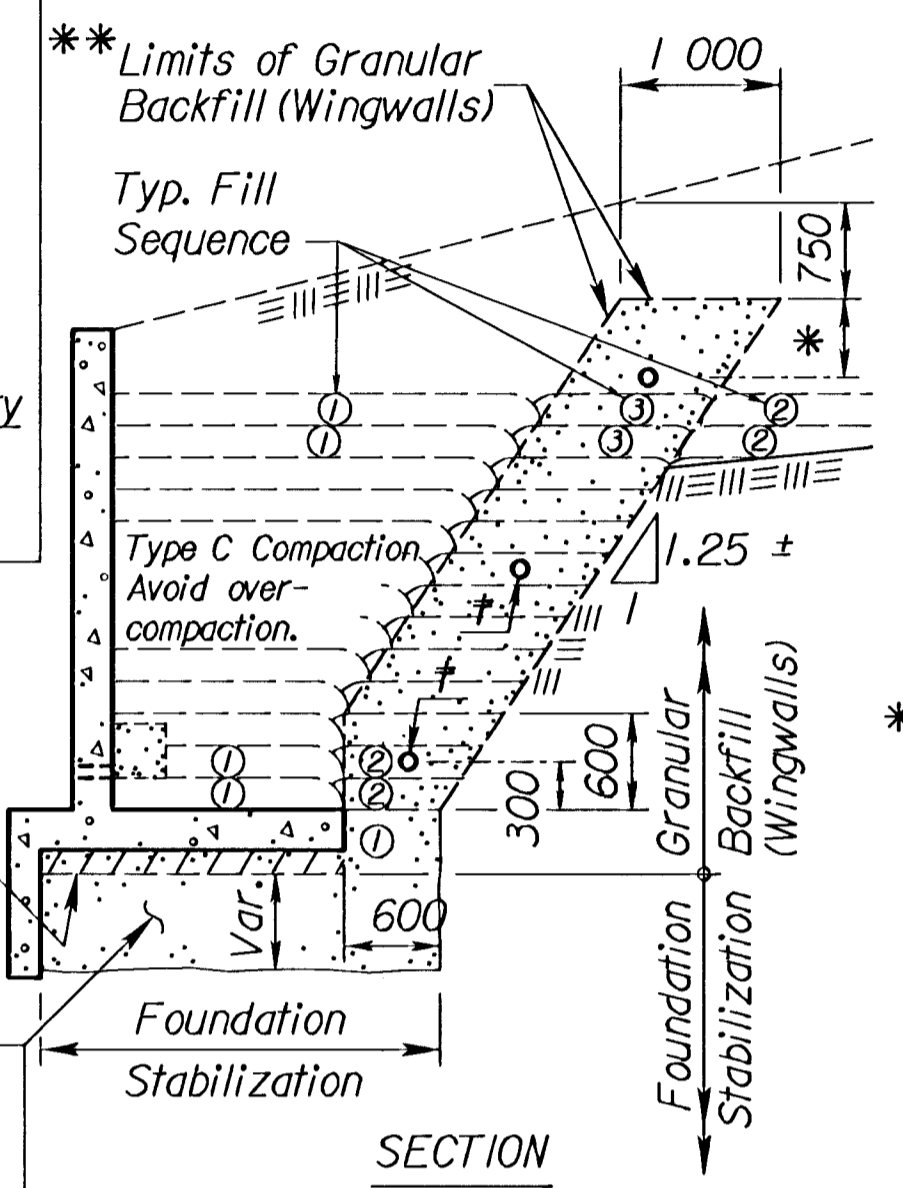
ELEVATION

GENERAL NOTES

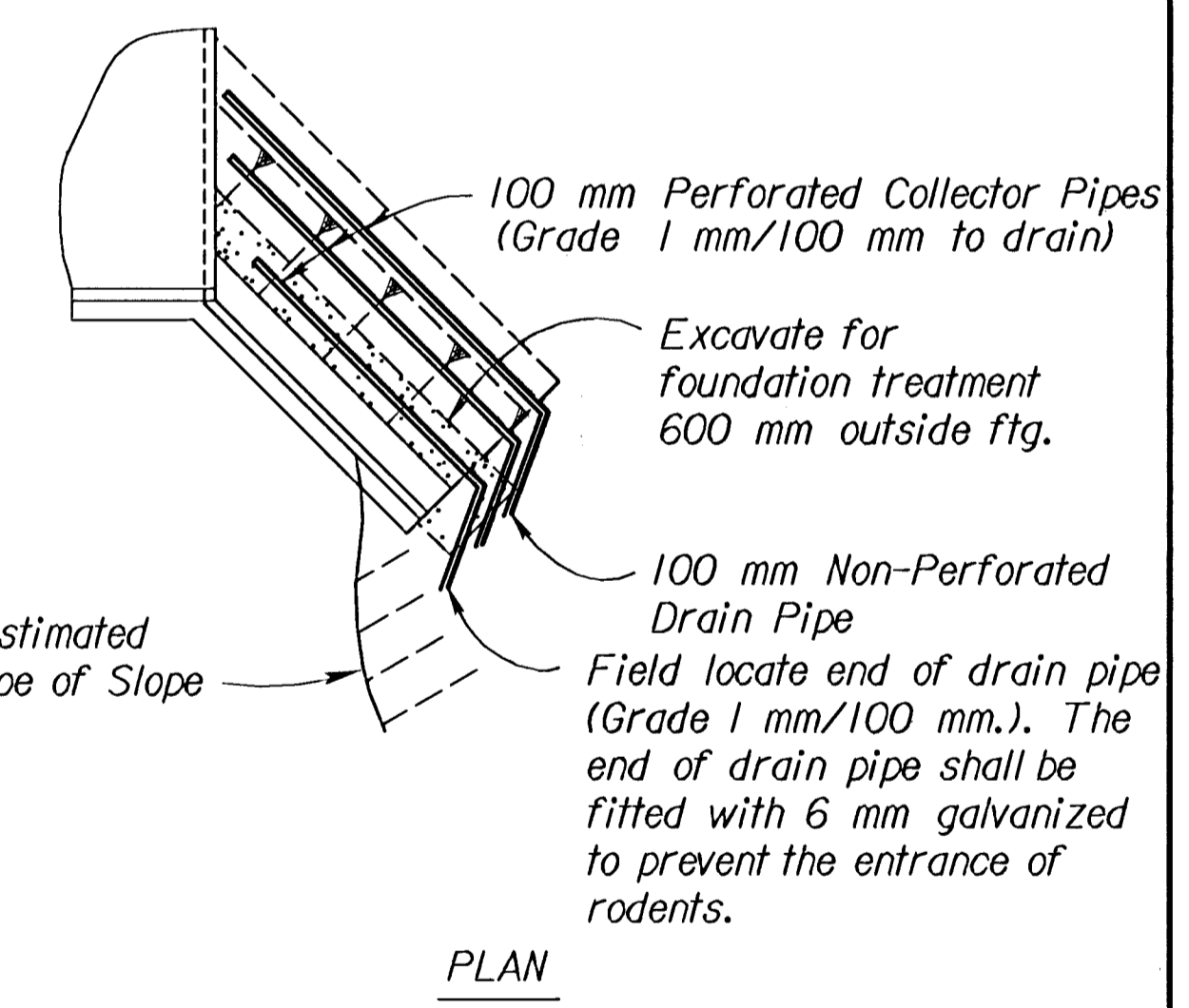
- Wingwall Drainage:**
- All wingwalls with weepholes shall have horizontal wingwall drainage as shown. Free-standing wingwalls shall also have the vertical wingwall drainage. Strip drains may be used in lieu of aggregate. See KDOT Specifications for "Abutment Strip Drains" for strip drain requirements.
 - Construction and materials for wingwall drainage, including weepholes, geotextile fabric, granular material, and strip drain shall be subsidiary to the bid item, "Grade 28 Concrete". Granular material for wingwall drainage shall conform to the requirements of UD-1. Weepholes may be a formed opening or corrugated polyethylene tubing.
- Wingwall Subbase:**
- Wingwall subbase shall be constructed at all wingwall footings to assure the assumed coefficient of friction between the concrete footing and the foundation, with the following exceptions:
 - Wingwall subbase will not be required for footings on RCB's 1.830 m or less in height unless otherwise determined by the Engineer.
 - The subbase will also not be required for footings founded on rock or clean, granular material as determined by the Engineer.
 - Subbase shall consist of 100 mm compacted granular material consisting of commercial grade clean sand or UD-1 material. All excavation, material and labor necessary to construct the wingwall subbase shall be subsidiary to "Grade 28 Concrete".
- Seal Course:**
- Seal Course consisting of 75 mm minimum of Commercial Grade Concrete shall be constructed to the limits directed by the Engineer. No reinforcing in the floor of the slab or wall footing shall be placed until the Seal Course has gained sufficient strength to permit working upon it without injury.

GENERAL NOTES

- Foundation Stabilization:**
- At sites where the wingwall footing or culvert floor is located within the limits of an existing streambed or is founded on unsuitable material, the Engineer will determine the depth of Foundation Stabilization.
 - Foundation Stabilization may be required under the box and/or wingwalls as directed by the Engineer. The granular material placed for foundation stabilization shall be measured and paid for at the contract price per cubic yard for "Foundation Stabilization". Material for Foundation Stabilization shall be suitable backfill material as approved by the Engineer. The excavation for the placement of granular material shall be subsidiary to the bid item, "Foundation Stabilization".
- Granular Backfill (Wingwalls):**
- In locations where the material behind the wingwall consist of soils judged as high plasticity clays, fat clays, expansive clays or organic clays, Granular Backfill (Wingwalls) shall be used. Granular Backfill construction may be used separately or combined with Foundation Stabilization as directed by the Engineer.
 - Measurement for the bid item, "Granular Backfill (Wingwalls)", shall be measured in m³ to the theoretical limits as shown Drainage pipe, rodent screens, and excavation shall be subsidiary to the bid item, "Granular Backfill (Wingwalls)".
 - Material for Granular Backfill (Wingwalls) shall conform to the requirements of UD-1 or BD-1. Drainage Pipe shall be corrugated polyethylene tubing conforming to KDOT Specifications.



SECTION



PLAN

GRANULAR BACKFILL AND FOUNDATION STABILIZATION

NO.	DATE	REVISIONS	BY	APP'D
5	5/15/02	Removed Wing Height Stipulation	RAM	KFH
4	3/19/02	Concrete from Class to Grade	RAM	KFH
3	3-28-97	Wrap granular drains	RAM	KFH
2	9-20-96	Strip drain & bentonite joints	RAM	KFH
1	10-2-91	Change drainage details	RAM	KFH

KANSAS DEPARTMENT OF TRANSPORTATION

RCB AUXILIARY DETAILS

DESIGNED	CHECKED	DATE	APP'D	DESIGNED	CHECKED	DATE	APP'D
RAM	RRR	6/4/02	APP'D	RRR	RRR	6/4/02	APP'D

DESIGN CK. RRR DETAIL CK. RRR QUAN. CK. TRACED CK. TRACE CK.

Std. Base File: br0203.sld
 Plotted By: mark
 File: g:\CIVIL\01079\DWG\br0203i.dgn
 Plot Date: 07/27/03