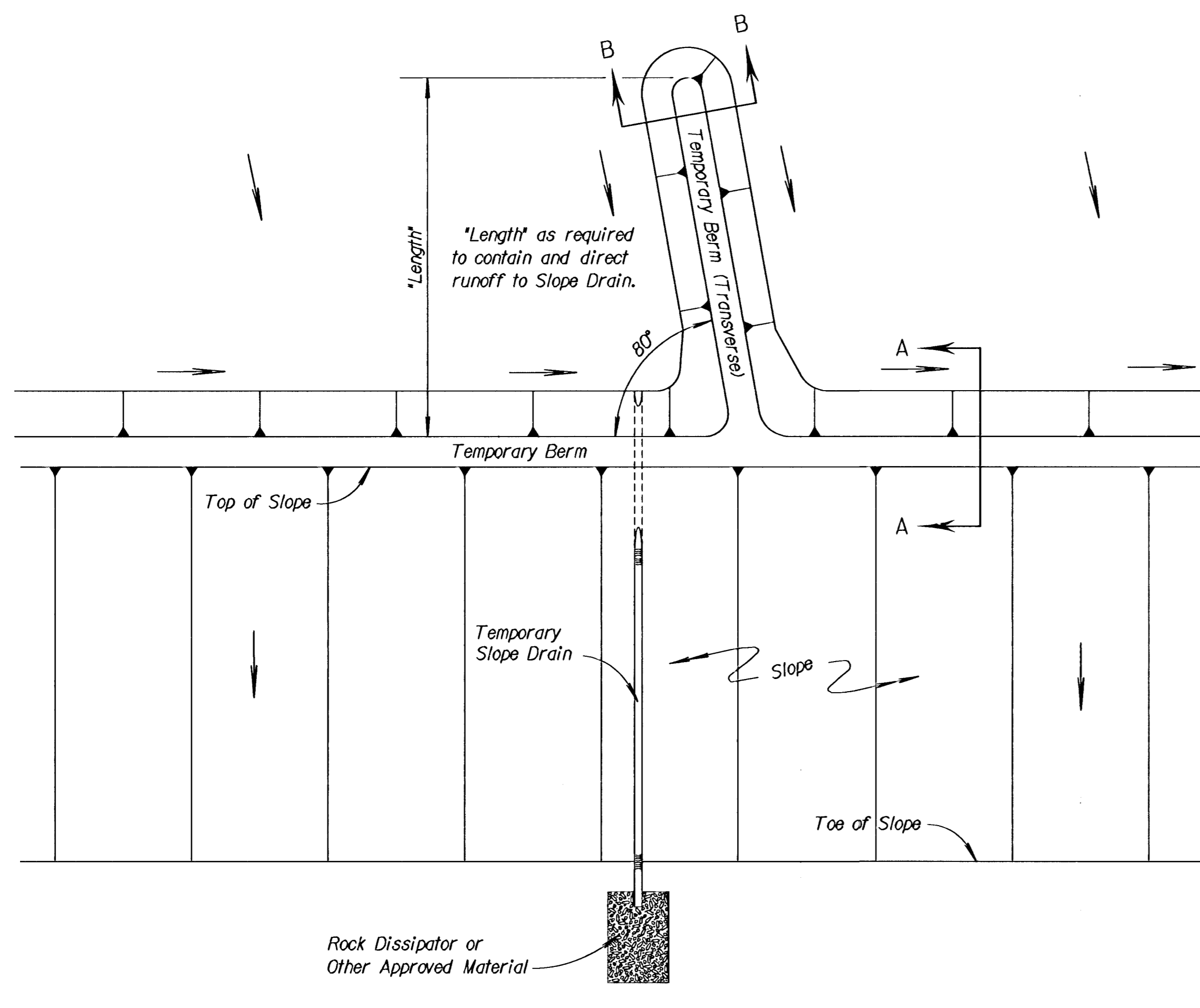
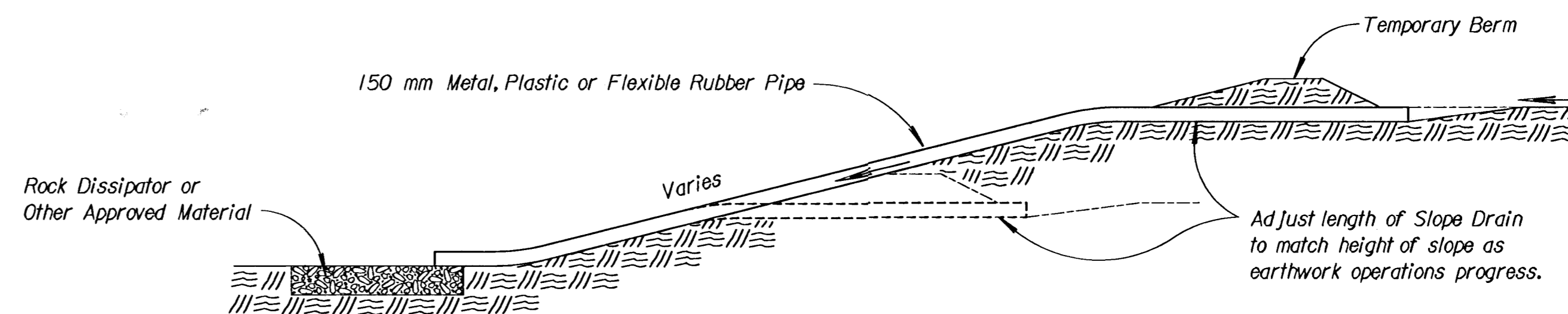


STATE	PROJECT NO.	YEAR	SHEET NO.	TOTAL SHEETS
KANSAS	87 N-0203-01	2003	28	48

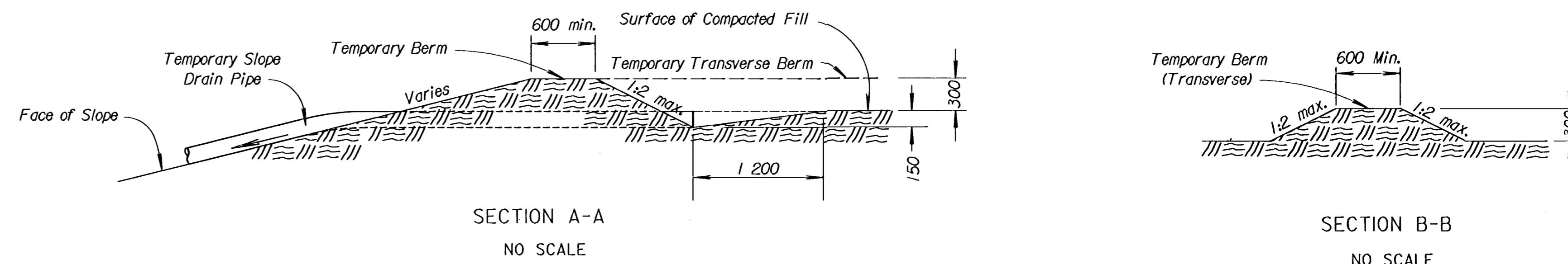
- NOTES:
- 1) Temporary Slope Drain and Temporary Berm may be used on either project foreslopes or project backslopes.
  - 2) Discharge of Slope Drains shall be into stabilized ditch or area, or into Sediment Basin.
  - 3) Pipe shall be secured in place as approved by Engineer.



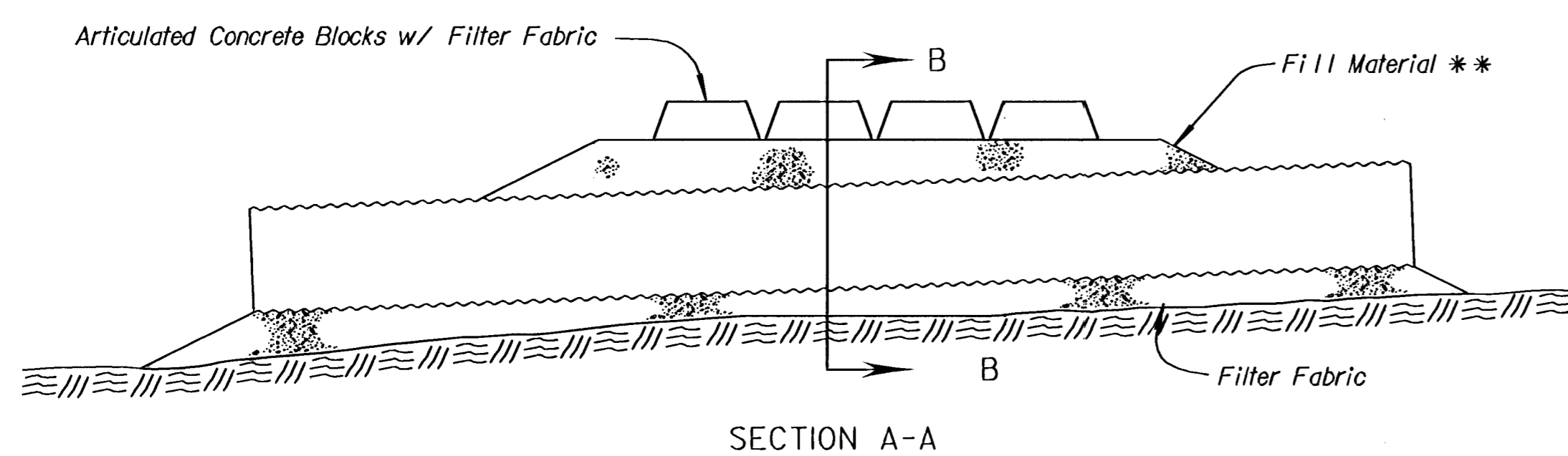
TYPICAL PLAN VIEW OF  
TEMPORARY BERM AND  
TEMPORARY SLOPE DRAIN  
NO SCALE



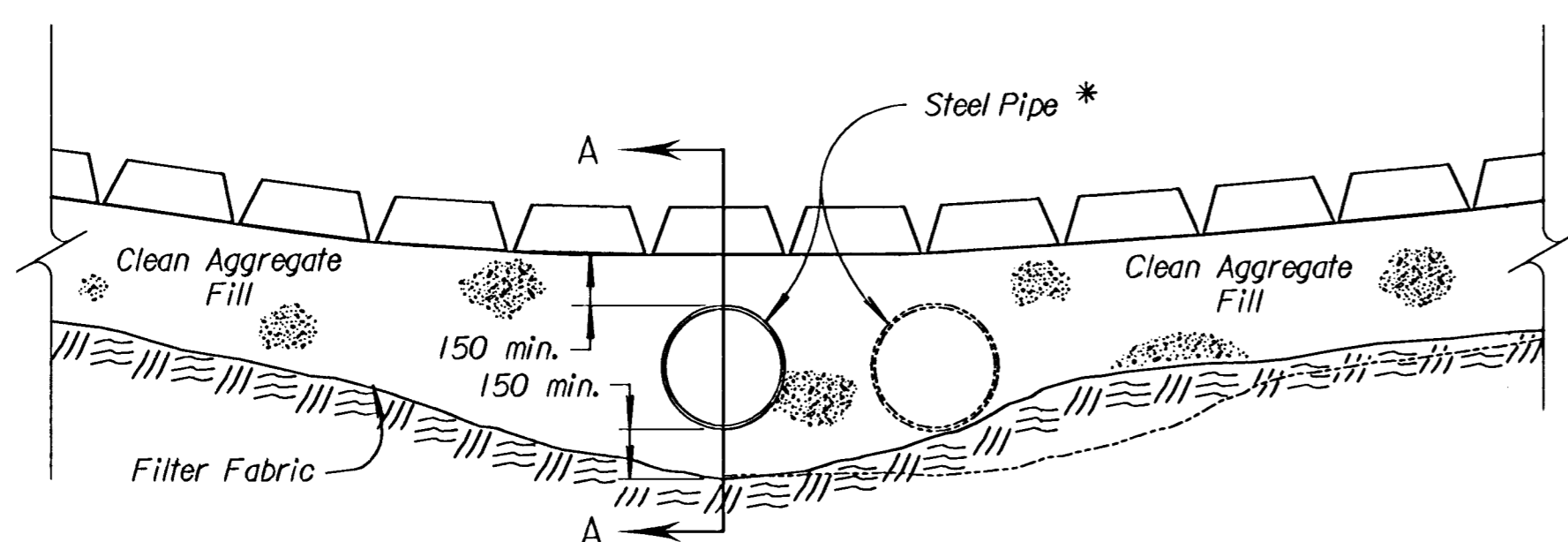
TYPICAL PROFILE OF TEMPORARY SLOPE DRAIN  
NO SCALE



TYPICAL PROFILE OF TEMPORARY BERM  
NO SCALE



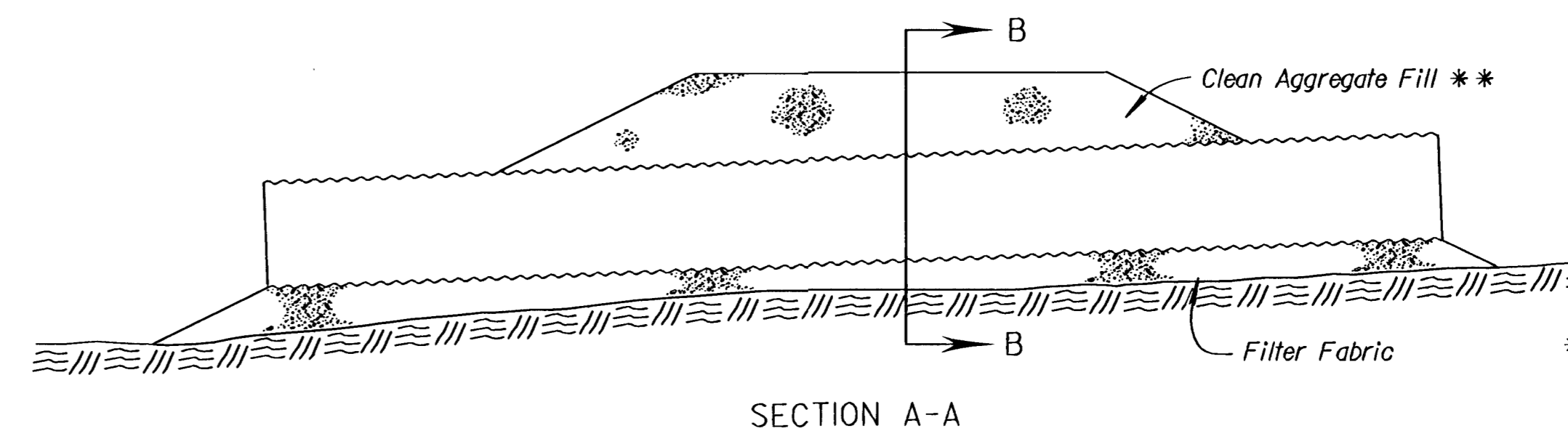
SECTION A-A



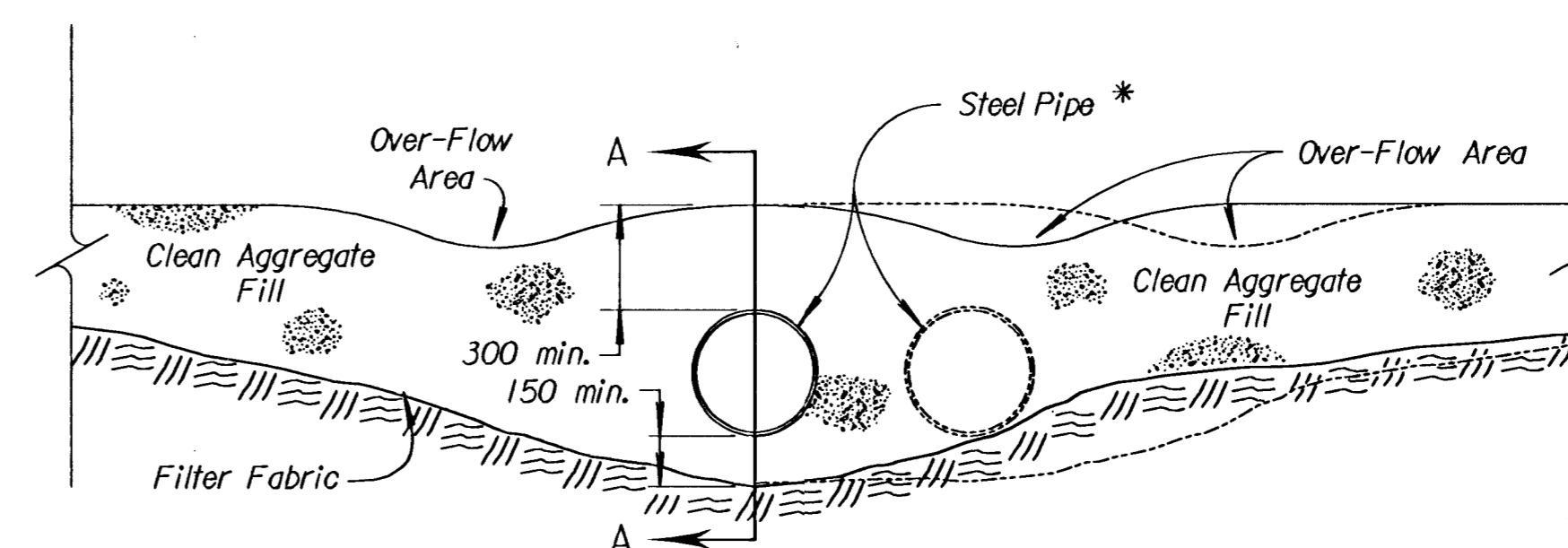
SECTION B-B

TEMPORARY STREAM CROSSING (ARTICULATED CONCRETE BLOCKS)  
NO SCALE

\* NOTE:  
Quantity, length and diameter  
of steel pipe to be determined  
by design flow calculations.



SECTION A-A



SECTION B-B

TEMPORARY STREAM CROSSING (AGGREGATE)  
NO SCALE

\* NOTE:  
Quantity, length and diameter  
of steel pipe to be determined  
by design flow calculations.

3				
2				
1	5/10/99	Revised Standard	WCL	RDR
NO.	DATE	REVISIONS	BY	APP'D
<b>KANSAS DEPARTMENT OF TRANSPORTATION</b>				
<b>TEMPORARY EROSION AND POLLUTION CONTROL</b>				
<b>TEMPORARY SLOPE DRAIN</b>				
<b>TEMPORARY STREAM CROSSING (AGGREGATE)</b>				
<b>TEMP. STREAM CROSS. (ARTC. CONC. BLOCKS)</b>				
<b>LA852B SI</b>				
F.H.W.A. APPROVAL	5/20/99	APP'D	Richard D. Ross	
DESIGNED	WCL	DETAILED	WCL	QUANTITIES
DESIGN CK.	RDR	DETAIL CK.	RDR	QUAN. CK.
			TRACED	WCL
			TRACE CK.	RDR