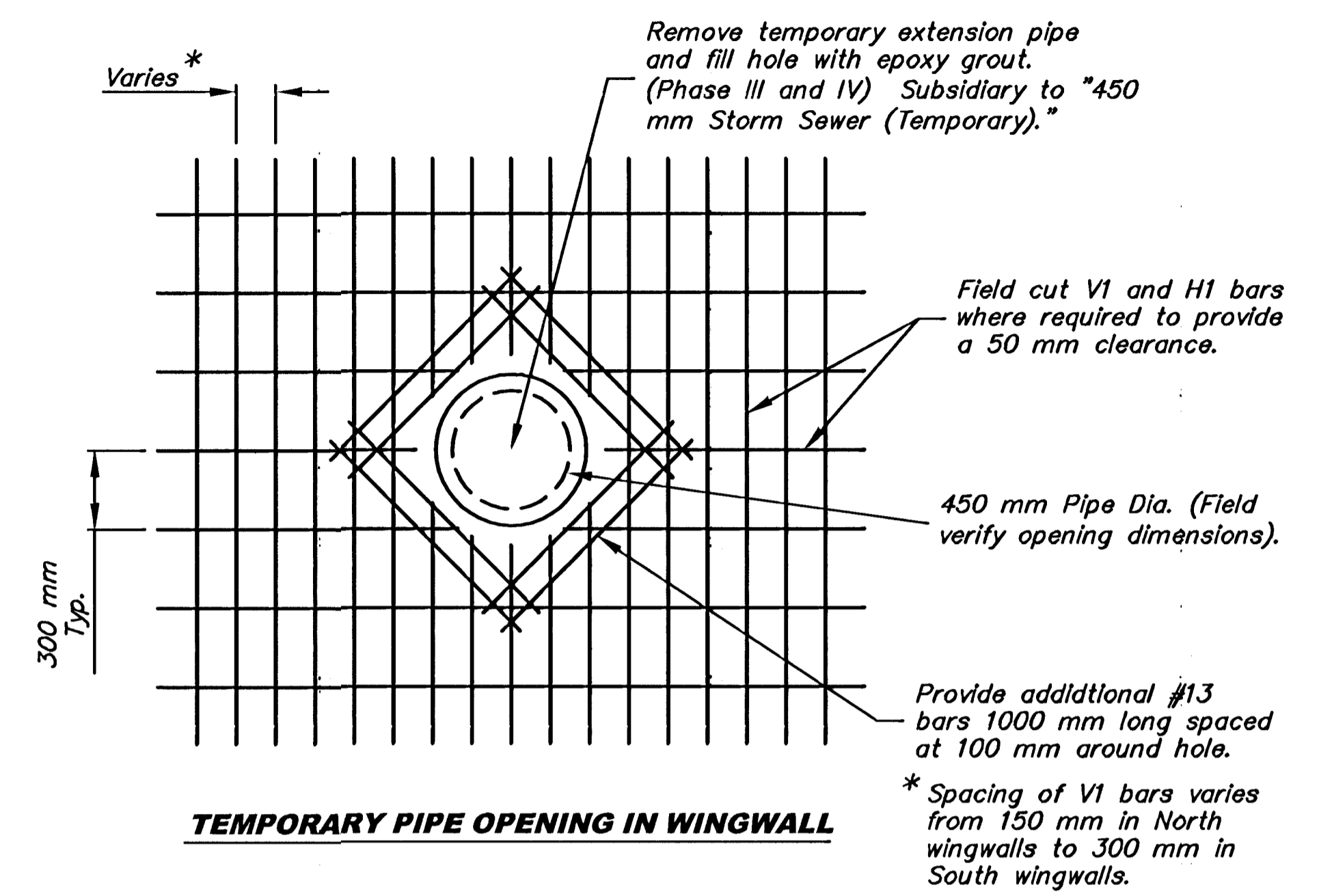
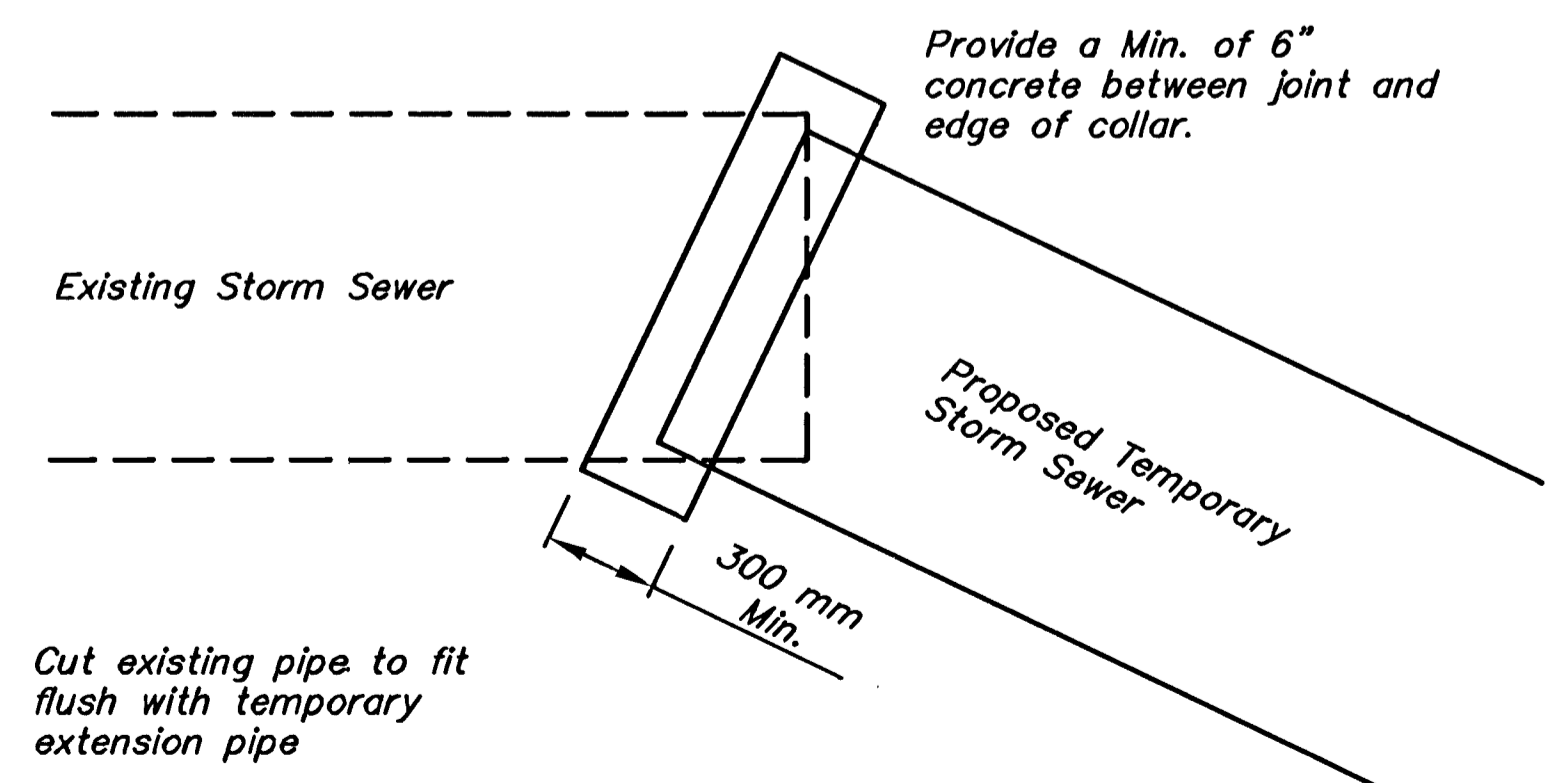
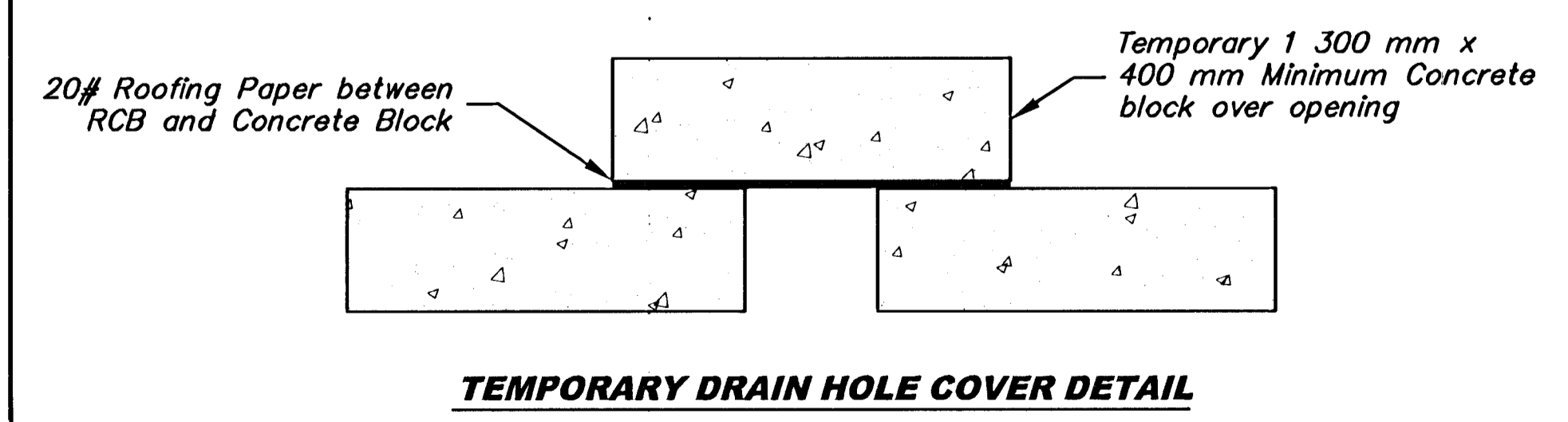
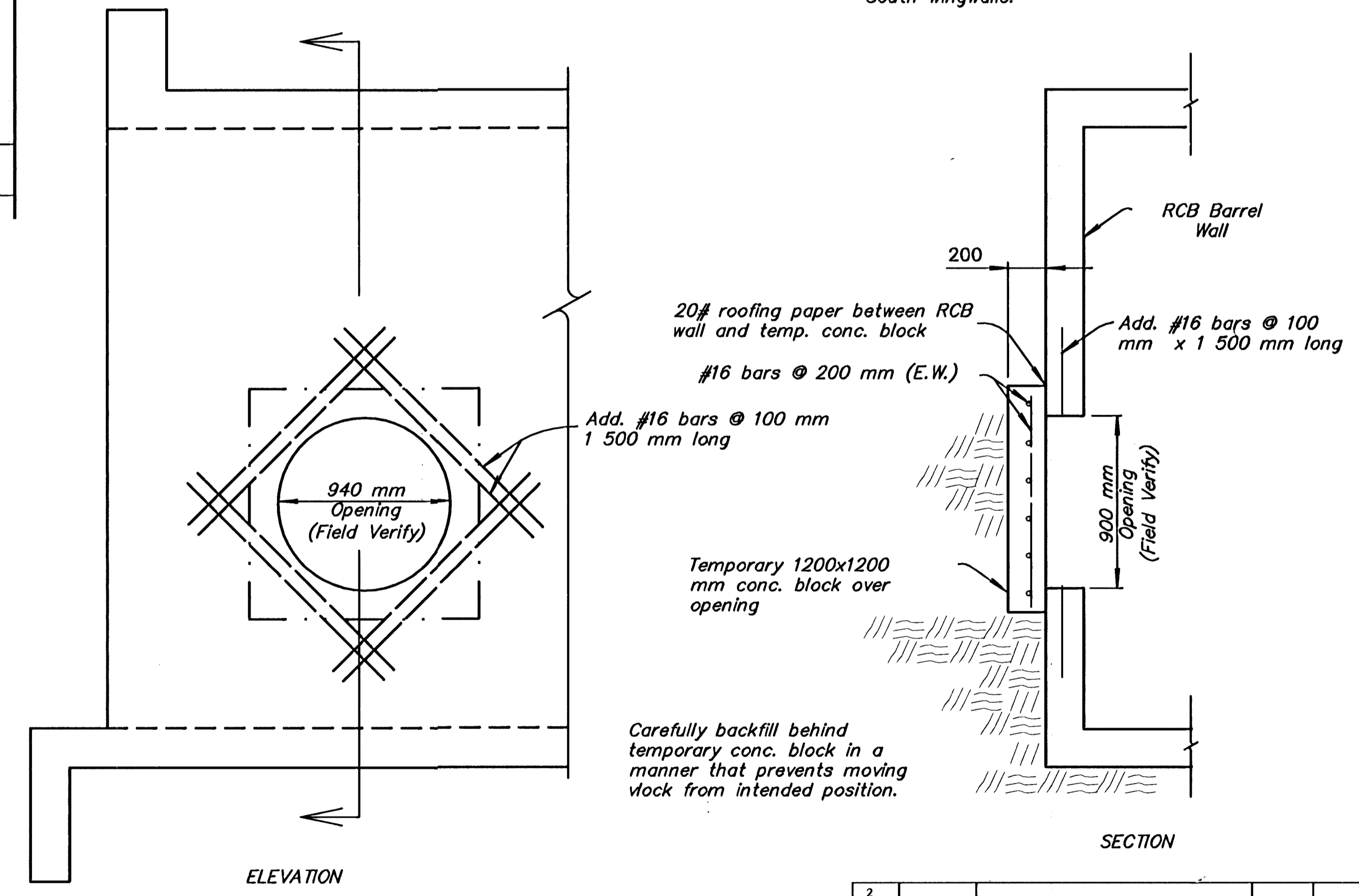
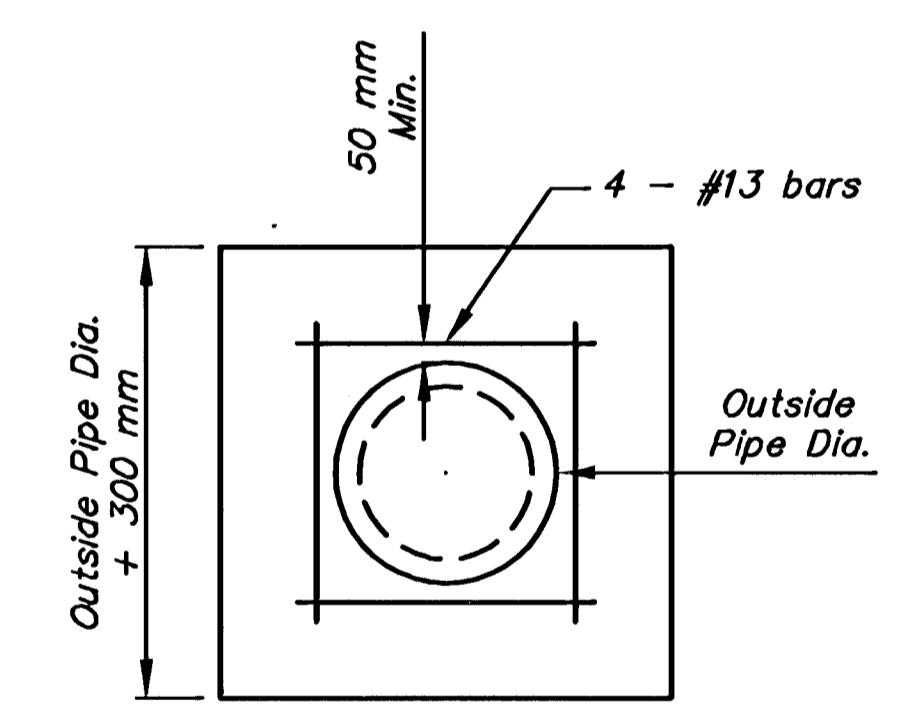


STATE	PROJECT NO.	YEAR	SHEET NO	TOTAL SHEETS
KANSAS	87 N-0203-01	2003	38	48

Phase	Handling of Traffic	Major Construction Items
I	All lanes remain open Close sidewalk on south side of Central between station 2+152 and station 2+208	Construct RCB extension on south side of Central Construct temporary storm sewer connections on the south side of Central Construct new sidewalk on south side of Central between station 2+152 and station 2+208
II	All lanes remain open Close sidewalk on north side of Central between station 2+134 and station 2+252	Construct RCB extension on north side of Central Construct temporary storm sewer connections on the north side of Central and proposed permanent storm sewer on the north side of Central
III	Outside west-bound lane on Central closed All other lanes remain open Sidewalk closure made at beginning of phase II still maintained	Construct aggregate base, asphaltic concrete base course and combined curb and gutter on north side Construct sidewalk, driveway and side-street improvements on north side of Central
IV	Outside east-bound lane on Central closed All other lanes remain open	Construct aggregate base, asphaltic concrete base course and combined curb and gutter on south side Construct storm water, remaining sidewalk, driveway and side-street improvements on south side of Central
V	Two-way traffic on north lanes on Central	Construct asphaltic concrete surface course in south lanes on Central.
VI	Two-way traffic on south lanes on Central	Construct asphaltic concrete surface course in



General Notes
 All signs and pavement markings conflicting with construction control shall be covered or removed as directed by the Engineer.
 As the various construction activities progress, certain situations may arise that will preclude adhering to the original construction sequence or which, in the opinion of the Contractor, would require adapting themselves to a more efficient phasing operation. Should this occur, the Contractor may submit to the Engineer an alternate plan for approval.
 Contractor shall maintain existing drainage system during construction and address local drainage issues as



TEMPORARY DRAIN HOLE COVER DETAIL

TEMPORARY CONCRETE PIPE COLLAR

RCB WALL BLOCKOUT DETAIL (For Future Storm Sewer Pipe)

Drain slope expansion joint material and geotextile to be installed during Road Improvement Phases (III and IV).

2					
1					
NO.	DATE	REVISIONS	BY	APP'D	
KANSAS DEPARTMENT OF TRANSPORTATION					
CONSTRUCTION SEQUENCE					
PROJ. NO. 87 N-0203-01			SEDGWICK CO.		
MKEC ENGINEERING CONSULTANTS, INC. WICHITA, KANSAS					
DESIGNED BY:	KJS	CHECKED BY:	KJS		
DRAWN BY:	RSB	DATE:	JAN. 2003	SHEET 38 OF 48	