

Sta. 32+32.57 Seneca, Exist.
Manhole, 27.53' Lt.
Adjust Manhole Top
Exist. Manhole Top=112.75
Prop. Manhole Top=112.81
Install 15" x 32.63' Storm Swr. RCP (N)

Sta. 49+12.58 Douglas, Saw
Cut & Match Exist. Pavement.

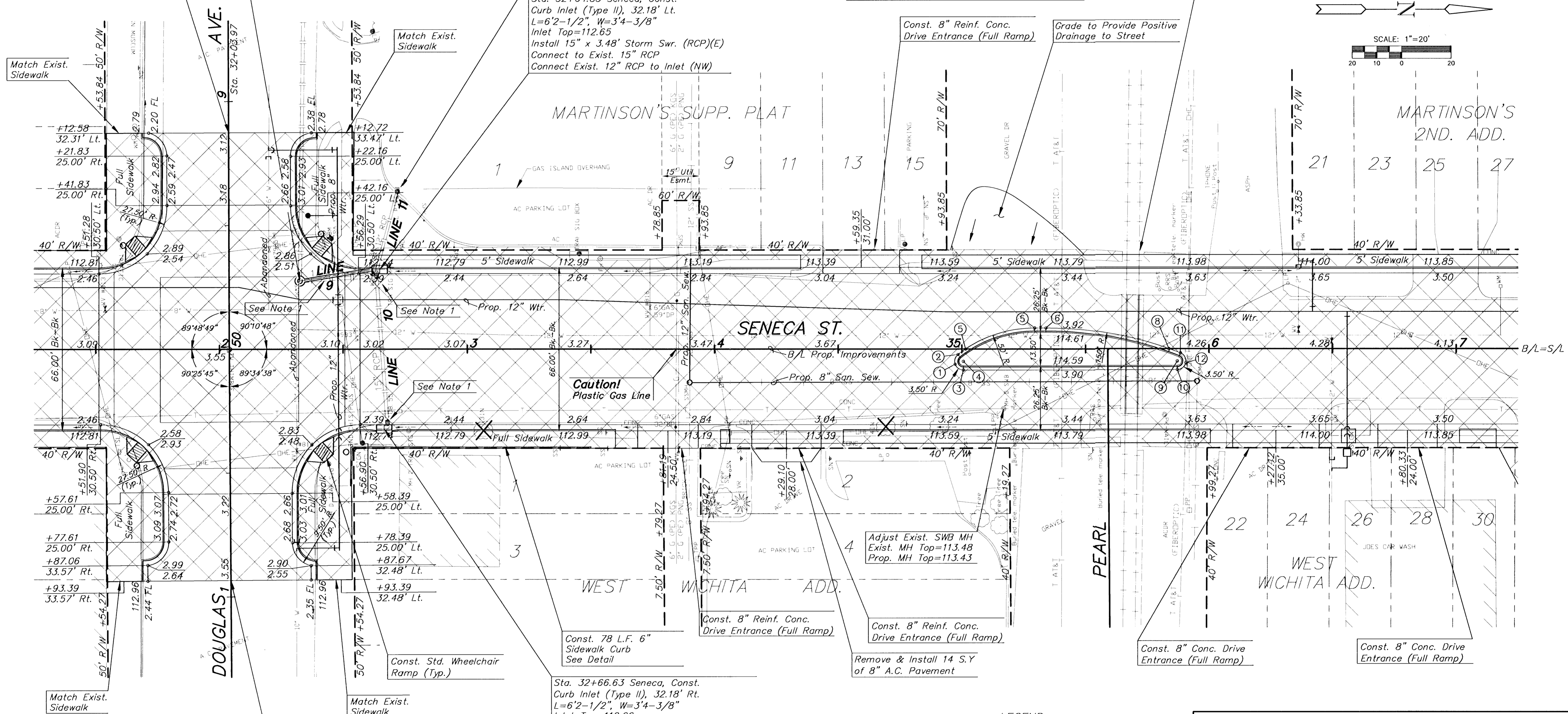
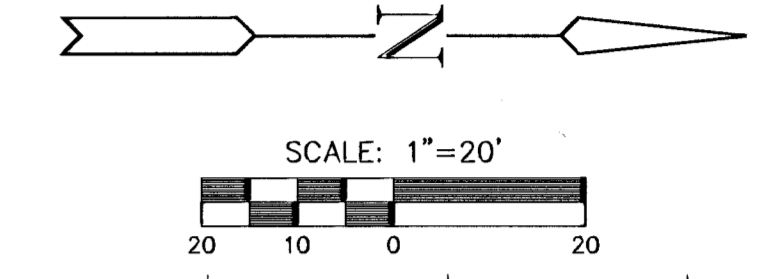
CENTERLINE VERTICAL CONTROL			
Station	P.V.I.	P.V.I. Elevation	Vertical Curve
31+51.28		113.09	No
31+76.08		113.26	No
31+97.97		113.52	No
32+03.97	H.P.	113.55	No
32+09.97		113.52	No
32+32.08		113.29	No
32+65	L.P.	112.93	No
36+23.50	H.P.	114.36	No

Sta. 32+71.93 Seneca, Exist.
Curb Inlet, 63.65' Lt.
Inlet Top=112.23
Exist. 12" x 32.47' Storm Swr. (RCP)(SE)

Sta. 32+64.83 Seneca, Const.
Curb Inlet (Type II), 32.18' Lt.
L=6'2-1/2", W=3'4-3/8"
Inlet Top=112.65
Install 15" x 3.48' Storm Swr. (RCP)(E)
Connect to Exist. 15" RCP
Connect Exist. 12" RCP to Inlet (NW)


MEDIAN LOCATION				
Pt. No.	Station	Offset	Elevation	
			High Edge	Top Curb
1	34+97.29	6.15' Rt.	113.73	114.40
2	34+98.43	2.25' Rt.	113.81	114.46
3	35+00.60	8.50' Rt.	113.70	114.39
4	35+00.60	5.00' Rt.	Radius Point	
5	35+01.52	0.00' Rt.	113.87	114.54
6	35+29.41	8.50' Lt.	113.81	114.50
7	35+33.97	8.50' Lt.	113.83	114.52
8	35+83.75	0.00' Rt.	114.20	114.87
9	35+87.17	5.00' Rt.	Radius Point	
10	35+87.17	8.50' Rt.	114.04	114.73
11	35+88.44	1.74' Rt.	114.18	114.83
12	35+90.61	5.65' Rt.	114.11	114.78

Sta. 35+52 to 35+84 Seneca, Remove
tracks, crossing, ties, ballast, two signal
structures, foundations, and incidentals
within Seneca St. right-of-way.



LEGEND

	Drive, Pavement and/or Sidewalk Removal
	R/W
	Tree Removal
000.00	Top Curb
0.00	High Edge



MKEC
ENGINEERING CONSULTANTS
411 N. WEBB ROAD
WICHITA, KS. 67208
316-684-9600

SENECA STREET
PROJECT NAME

PAVING PLANS
SHEET TITLE

DCH, ASH WJW GJA
DESIGN BY: DRAWN BY: CHECKED BY:

OCT. 2001 98092_E3 8 / 87
DATE DRAWING NAME SHEET / OF

Notes:
1. Remove or abandon storm water sewer structures as required (Typ.). Payment Subsidiary to other bid items.

G:\ACT\158092\PAVE\98092_E3.DWG Wed Oct 24 15:45:58 2001