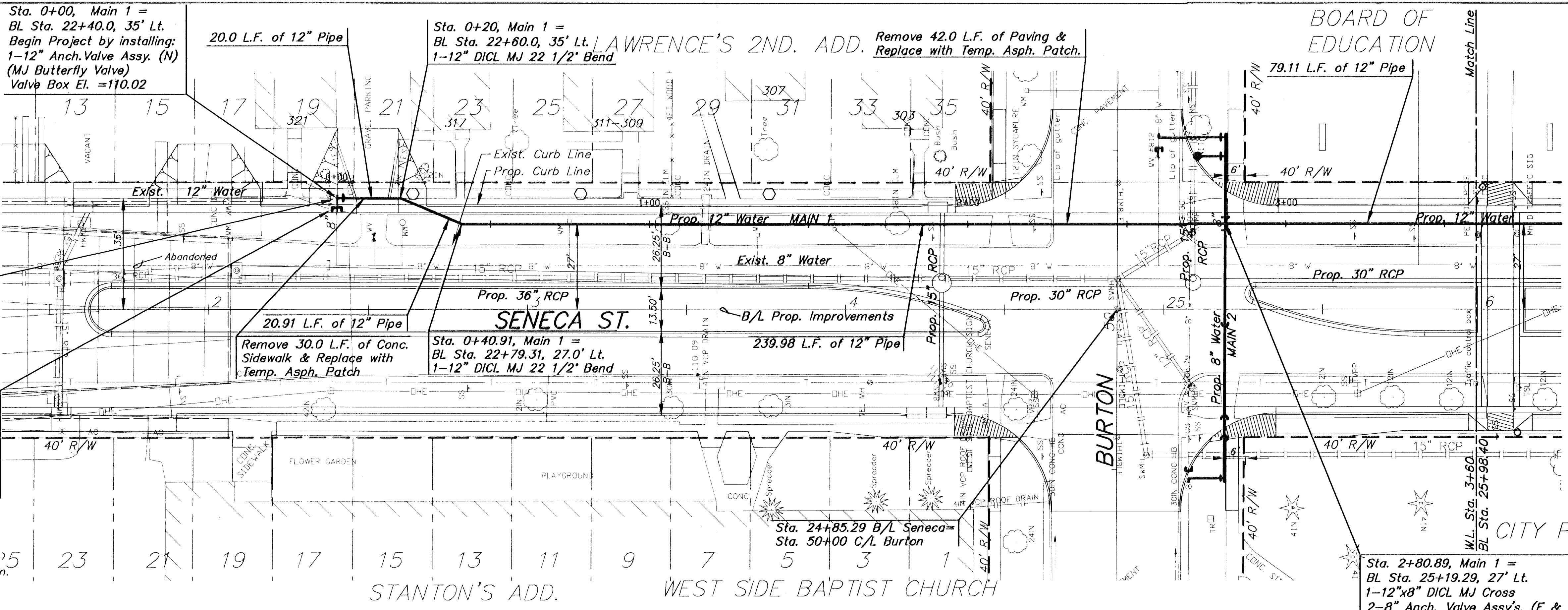


Note:
To make connection it will be necessary to shut down the 8" main to Douglas Ave. by closing the 12" valve looking South from Tee, the 8" valves looking East & West in Burton and the 8" valve looking South from Douglas. After 12" Anchor Valve Assy. has been installed, the 8" main can then be placed back in service.

Contractor to Verify Location & Depth of Existing 12"x8" Tee prior to Construction

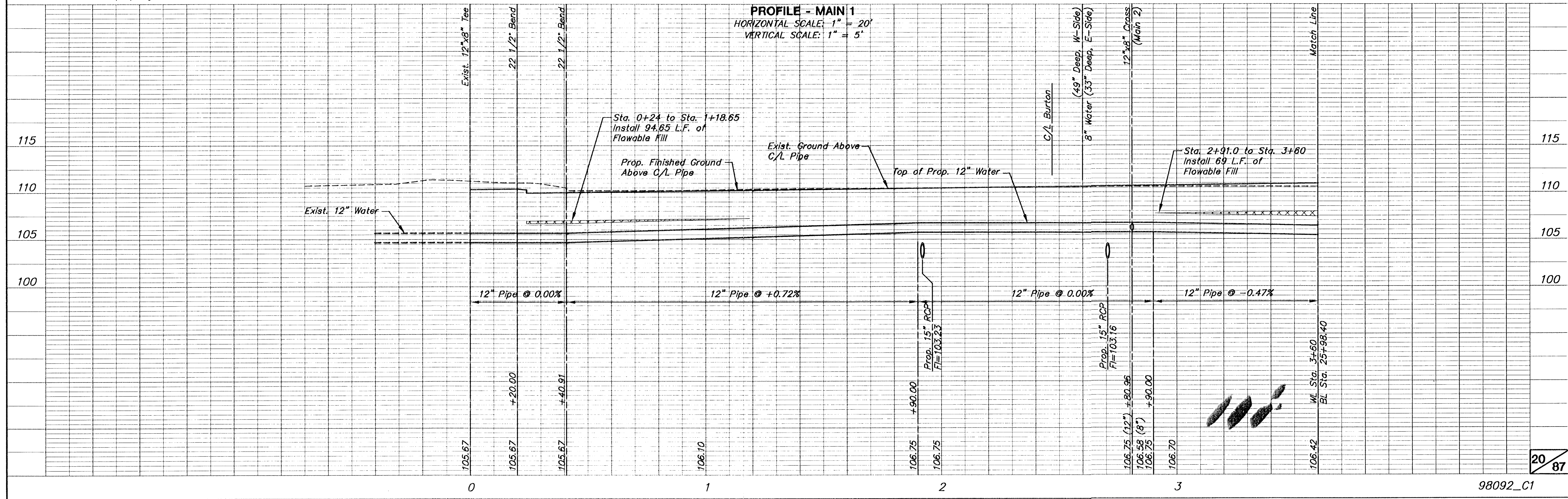
After new 12" main has been placed in service & the services tied over, the 8" main can be killed by removing a section of pipe out of the 12"x8" tee, plugging the tee (east) & capping the cut end of the 8" main (east).

Replacement meter setting, 1" min. Salvage existing setting for city. Connect new service line to existing consumer's water service. Meter to set between back of sidewalk and property line.



3-Short Services

**MAIN - 1
SCALE: 1" = 20'**
**PROFILE - MAIN 1
HORIZONTAL SCALE: 1" = 20'
VERTICAL SCALE: 1" = 5'**



G:\CIVIL\98092\WTR\98092_C1.dwg Wed Oct 24 16:24:33 2001