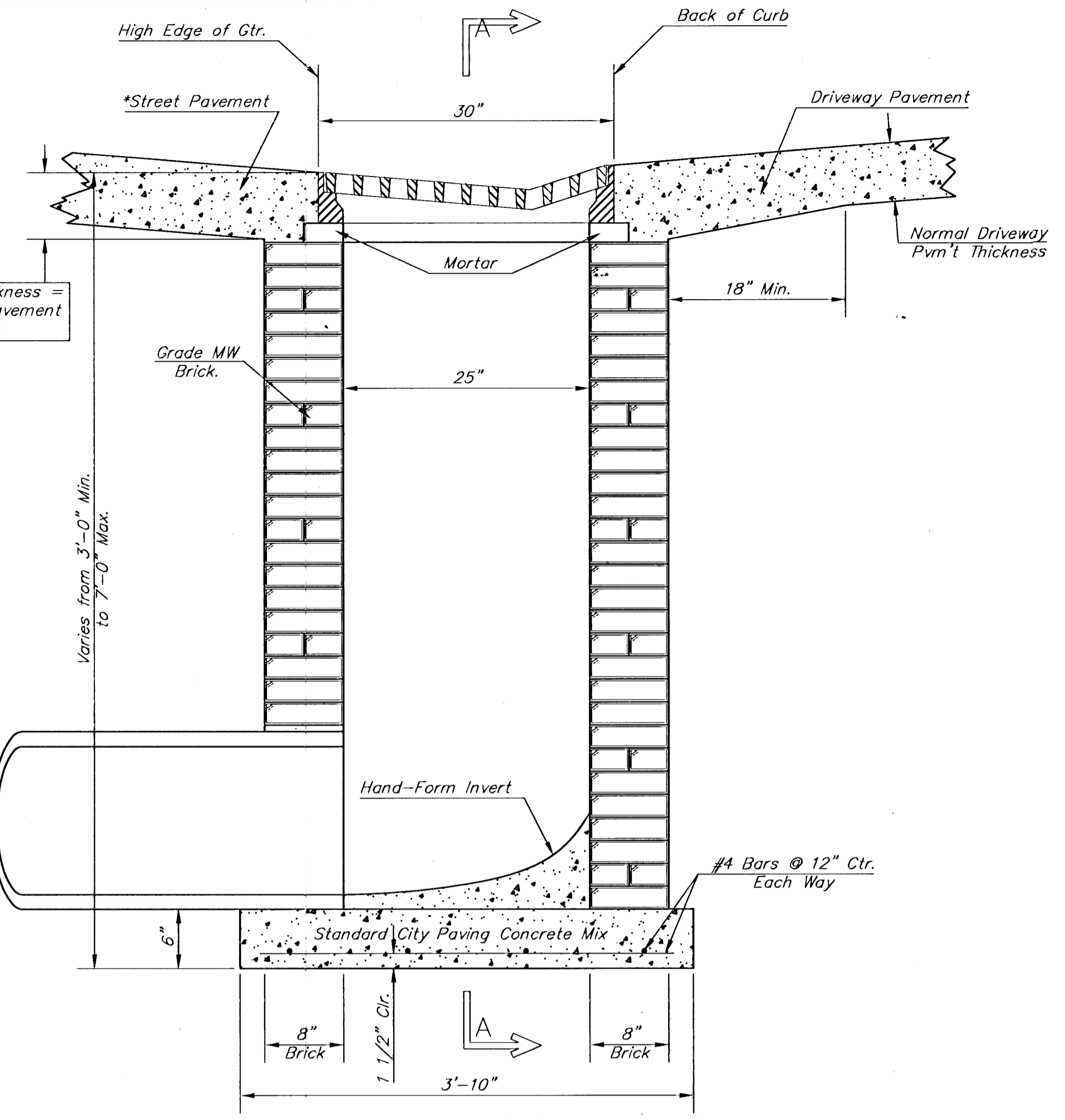
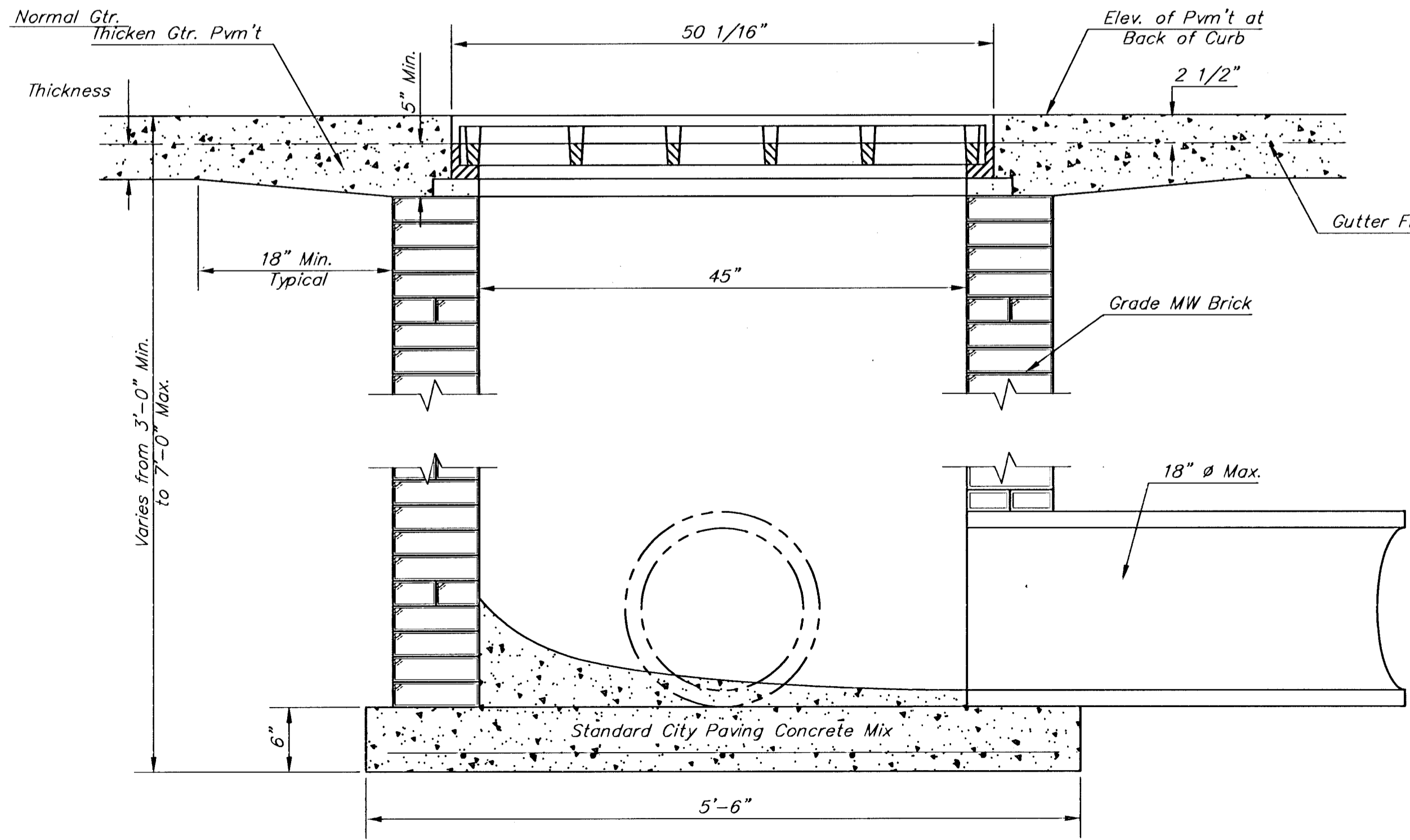


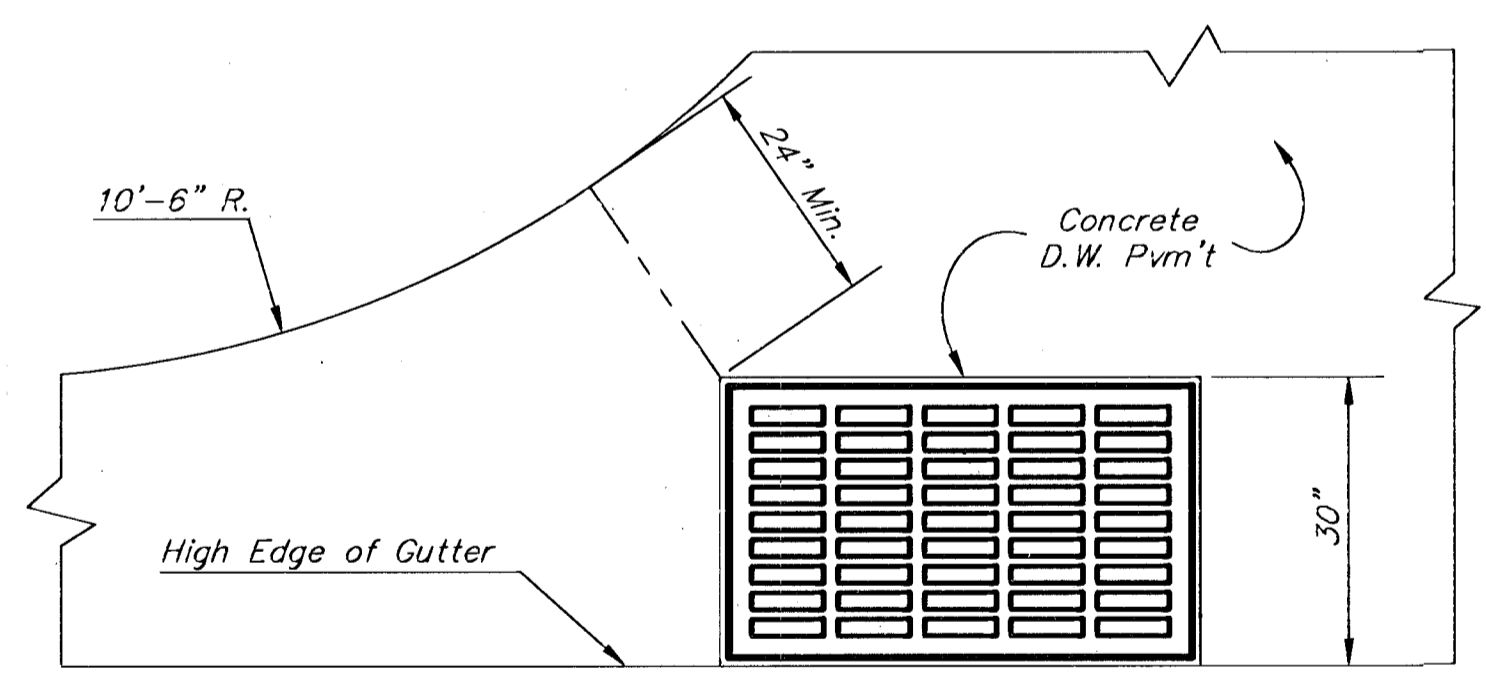
END OUTLET



SIDE OUTLET



SECTION A-A

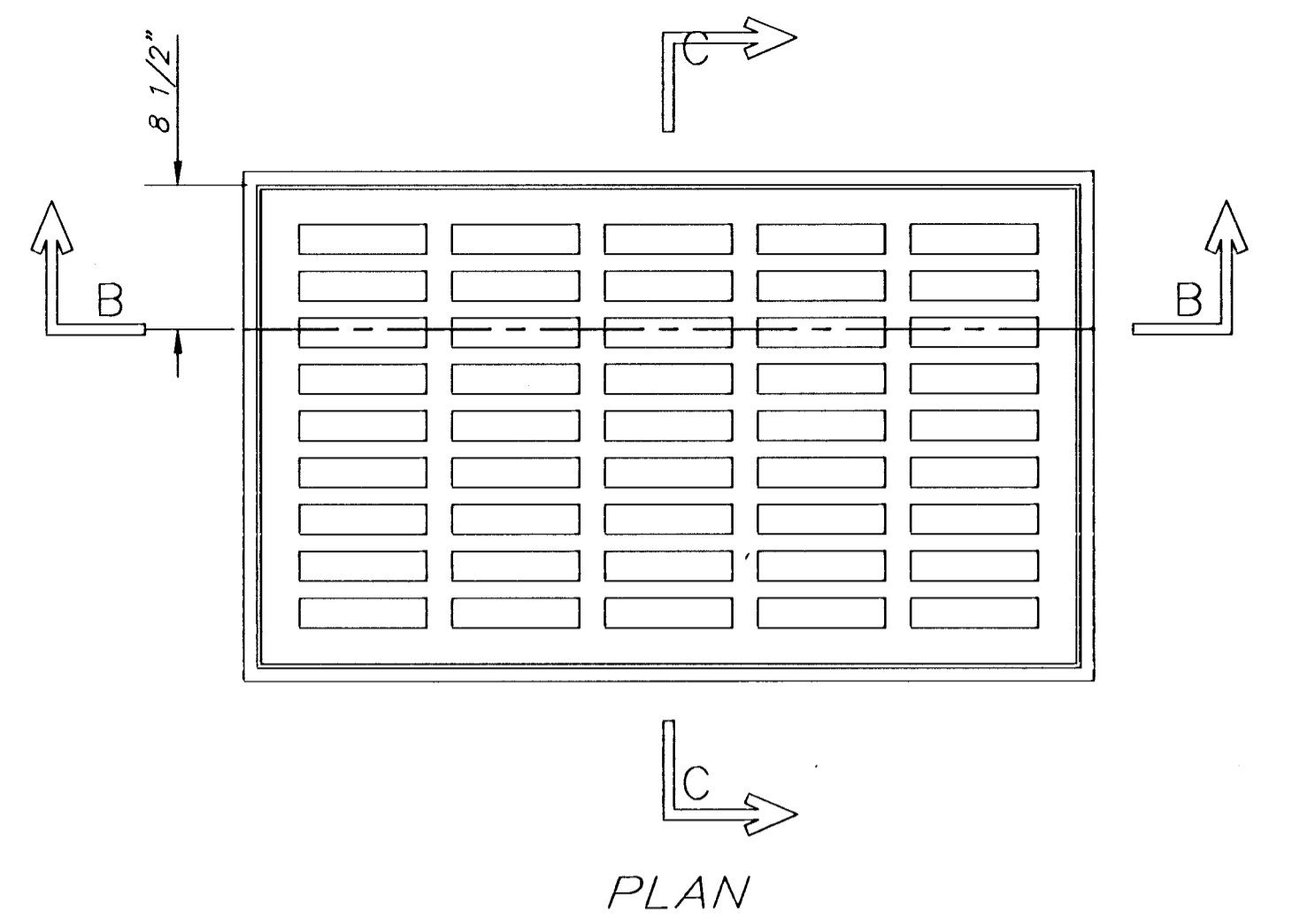


PLAN

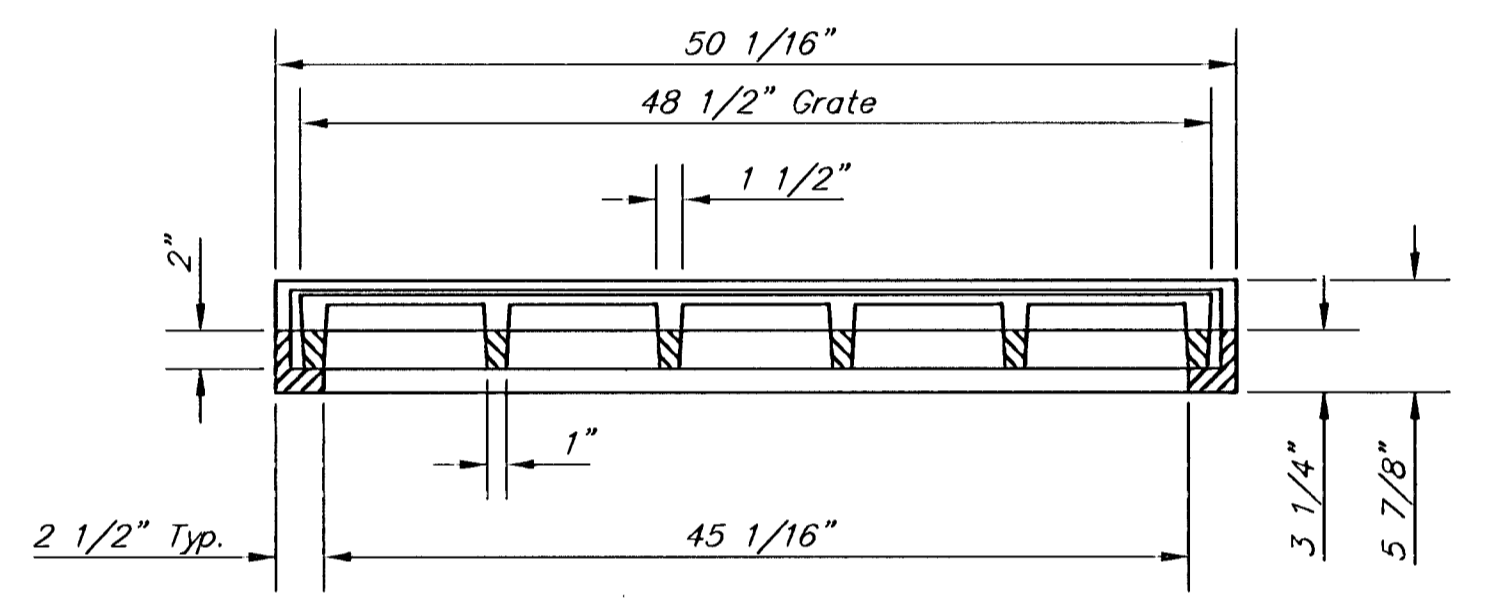
Radius Ramp Drive to be Constructed On Lot 3, Block 2 per City Standard

GENERAL NOTES

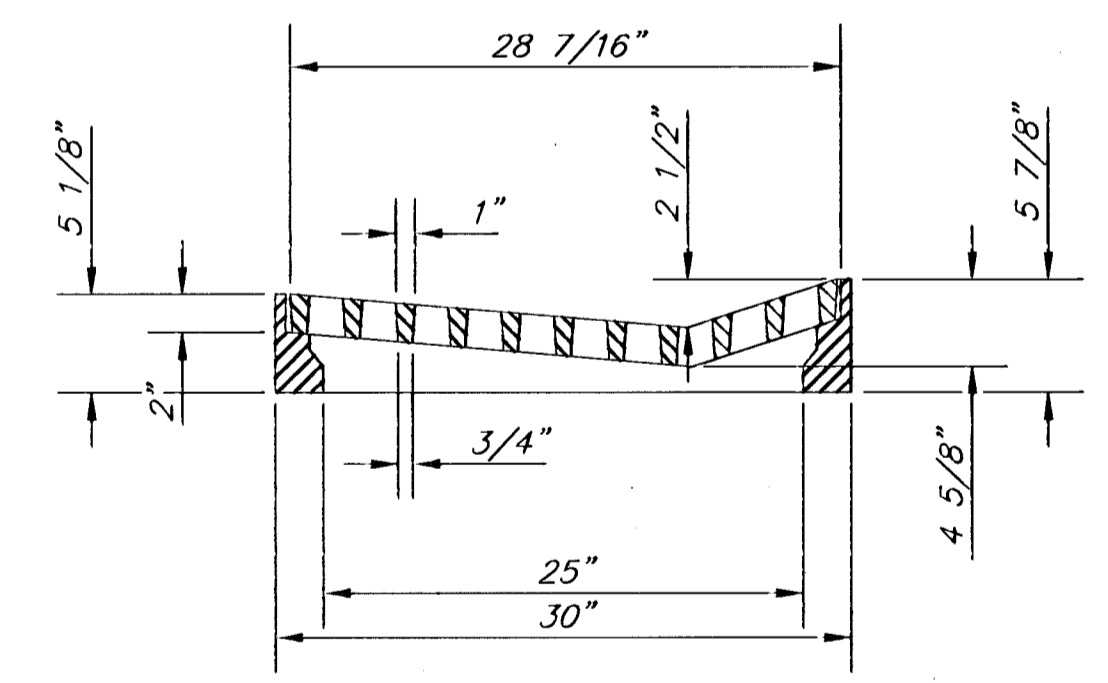
1. Grate frame to be installed on thin mortar cushion to insure full support along brick walls. Concrete used for inlet construction shall be concrete pavement mix.
2. Inlet invert shall be shaped with 8 sack sand mix concrete to create flow channels and to increase hydraulic efficiency such that the inlet will be self cleaning between all inlet and/or outlet pipes.
3. The ends of all pipes installed in inlets shall be cut off flush with the inside face of the inlet wall.
4. Inlet Frame and Grate to be Deeter #2095 of approved equal



PLAN



SECTION B-B



SECTION C-C

DEETER #2095 FRAME & GRATE  
TOTAL WEIGHT: 705 lbs.

<p>THE CITY OF WICHITA</p> <p>CITY ENGINEER'S OFFICE CITY HALL - SEVENTH FLOOR 455 NORTH MAIN STREET WICHITA, KANSAS 67202 (316) 268-4624 (316) 268-4114 FAX</p>	<b>DRIVEWAY GRATED INLET SINGLE</b>	
	M. E. LINDEBAK P.E. - CITY ENGINEER	
	PROJECT NUMBER 472-82966	CCA NO. 706747
	DATE MAR 96	SHEET 38 OF 87