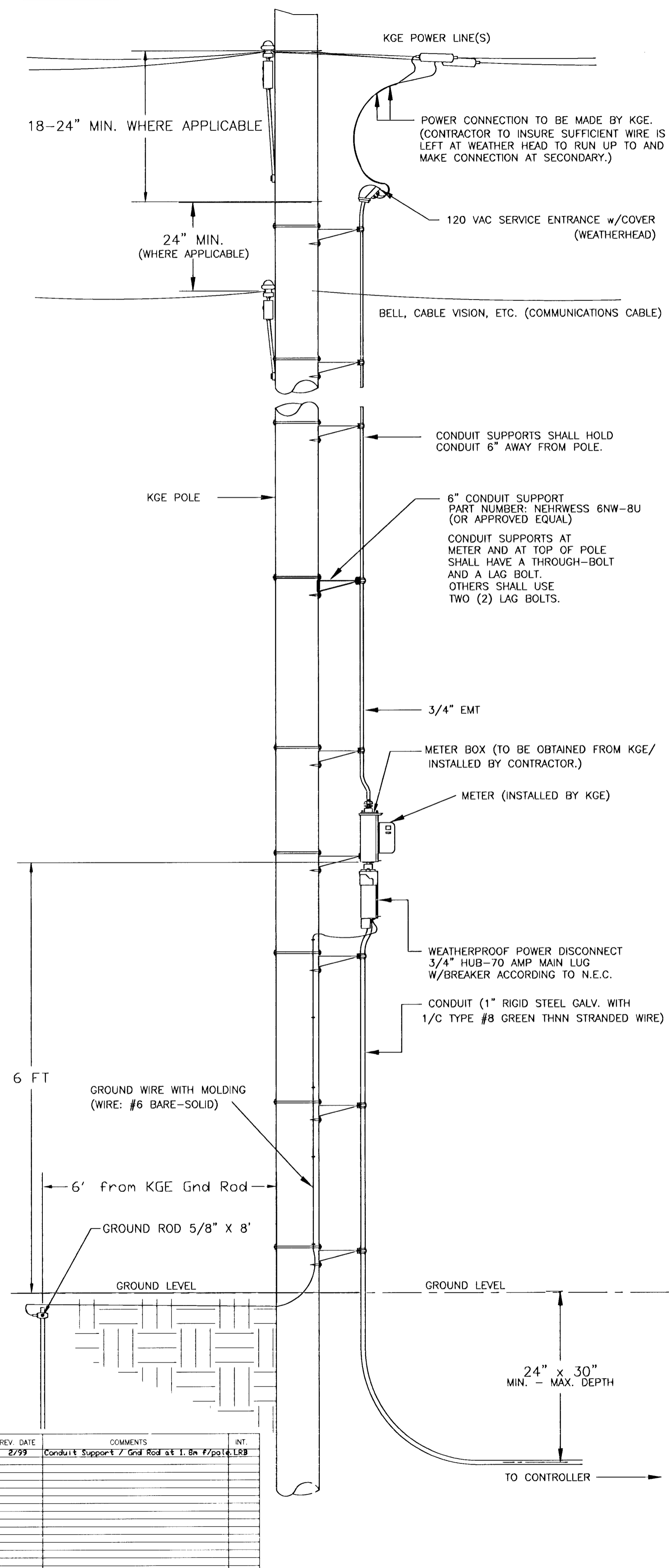
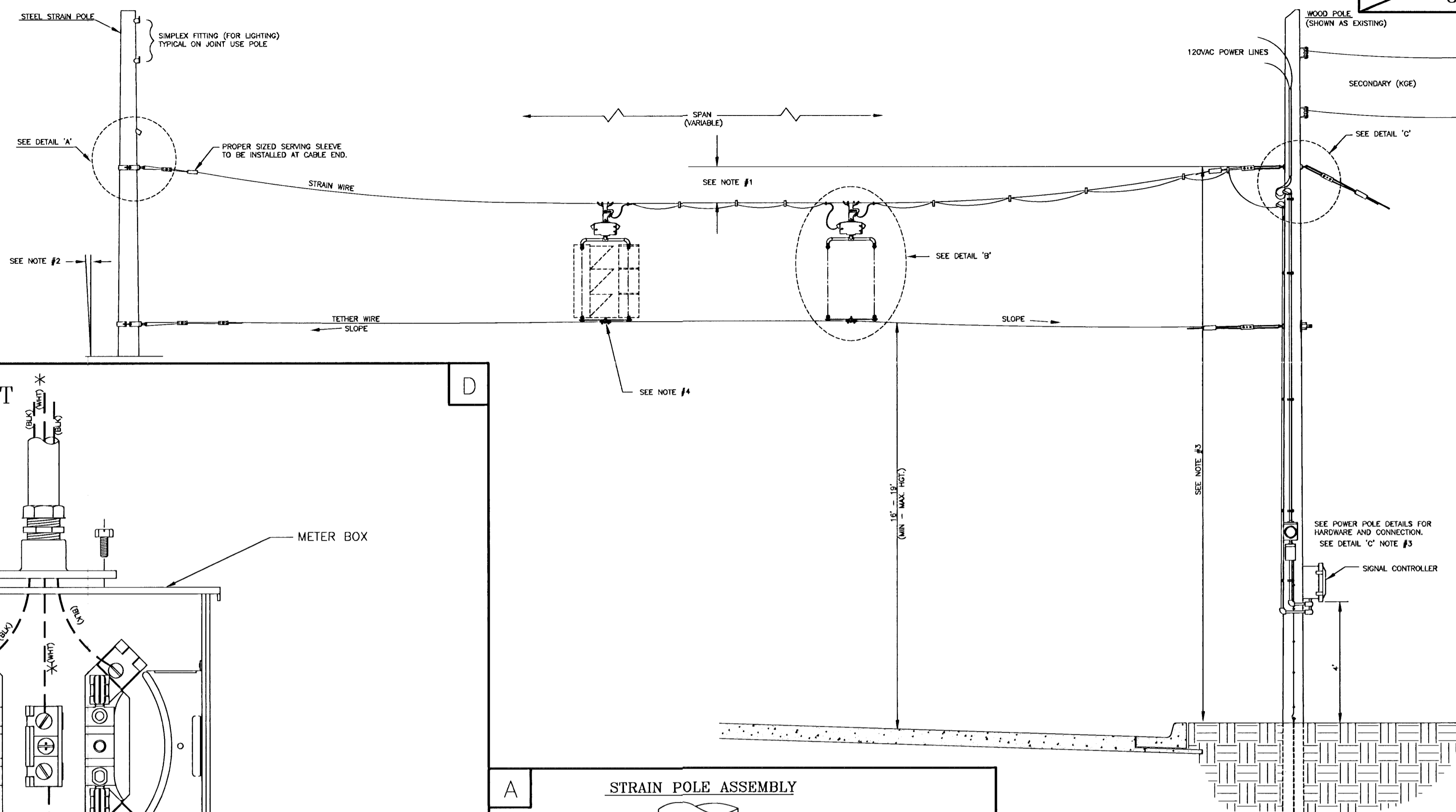


POWER POLE DETAILS



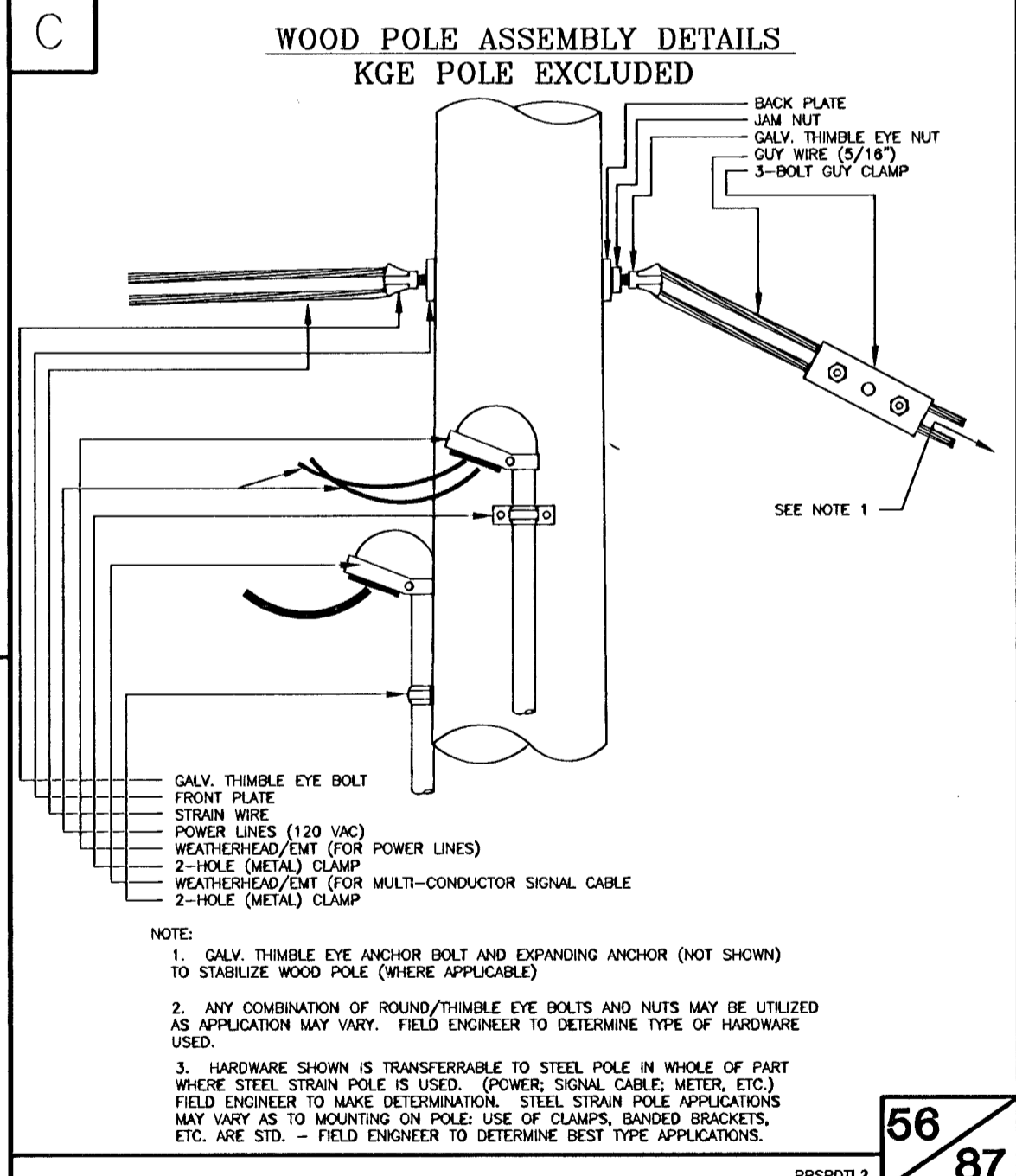
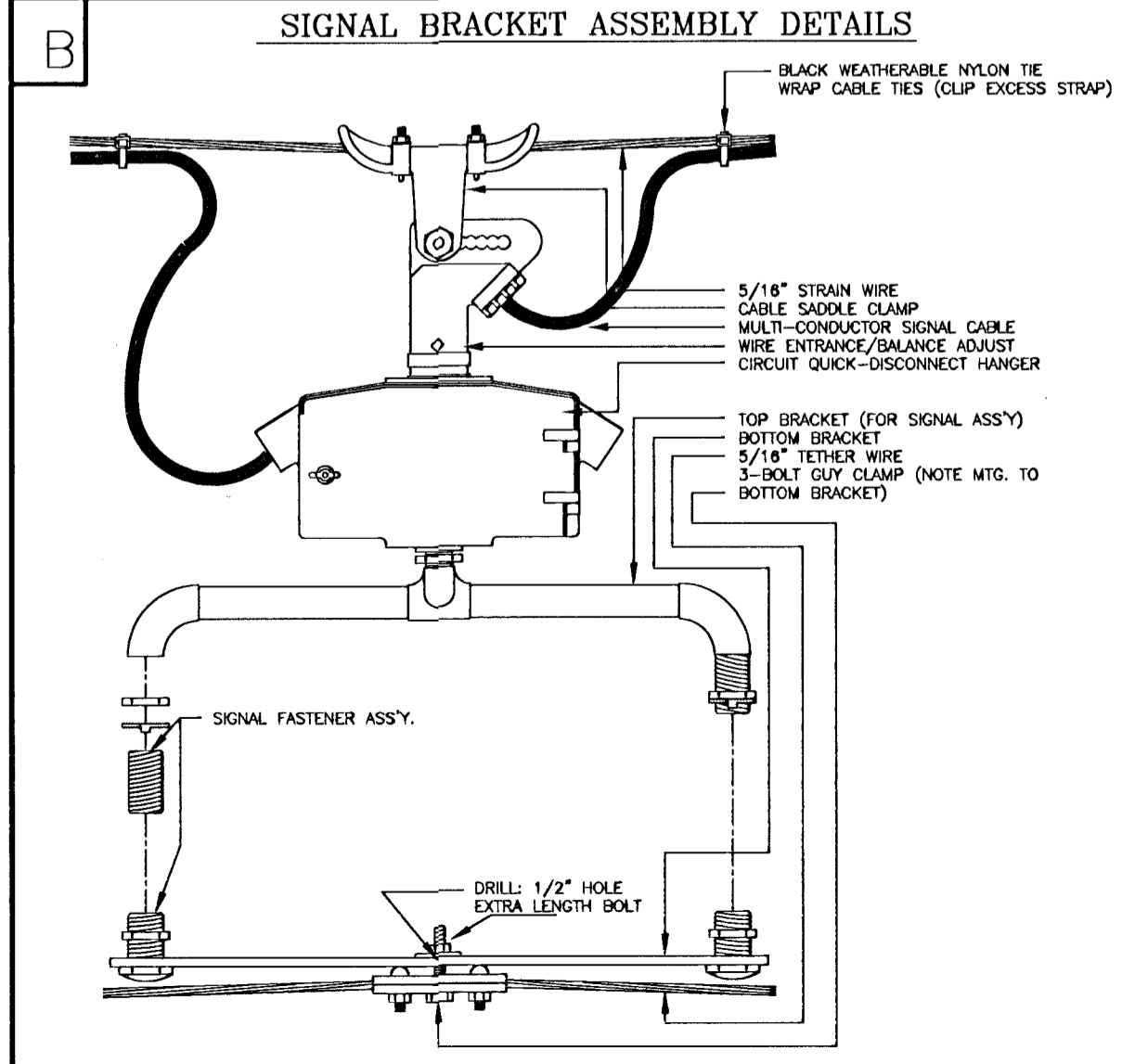
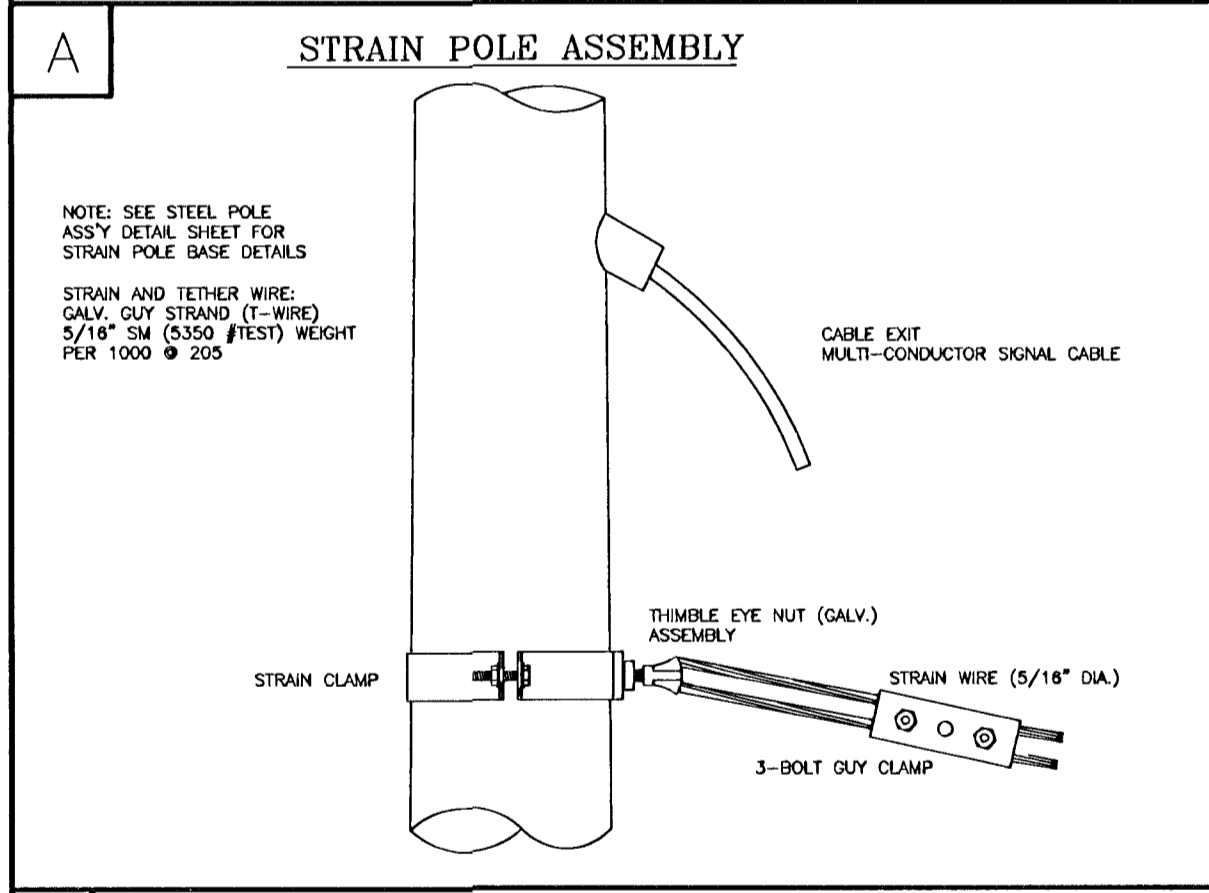
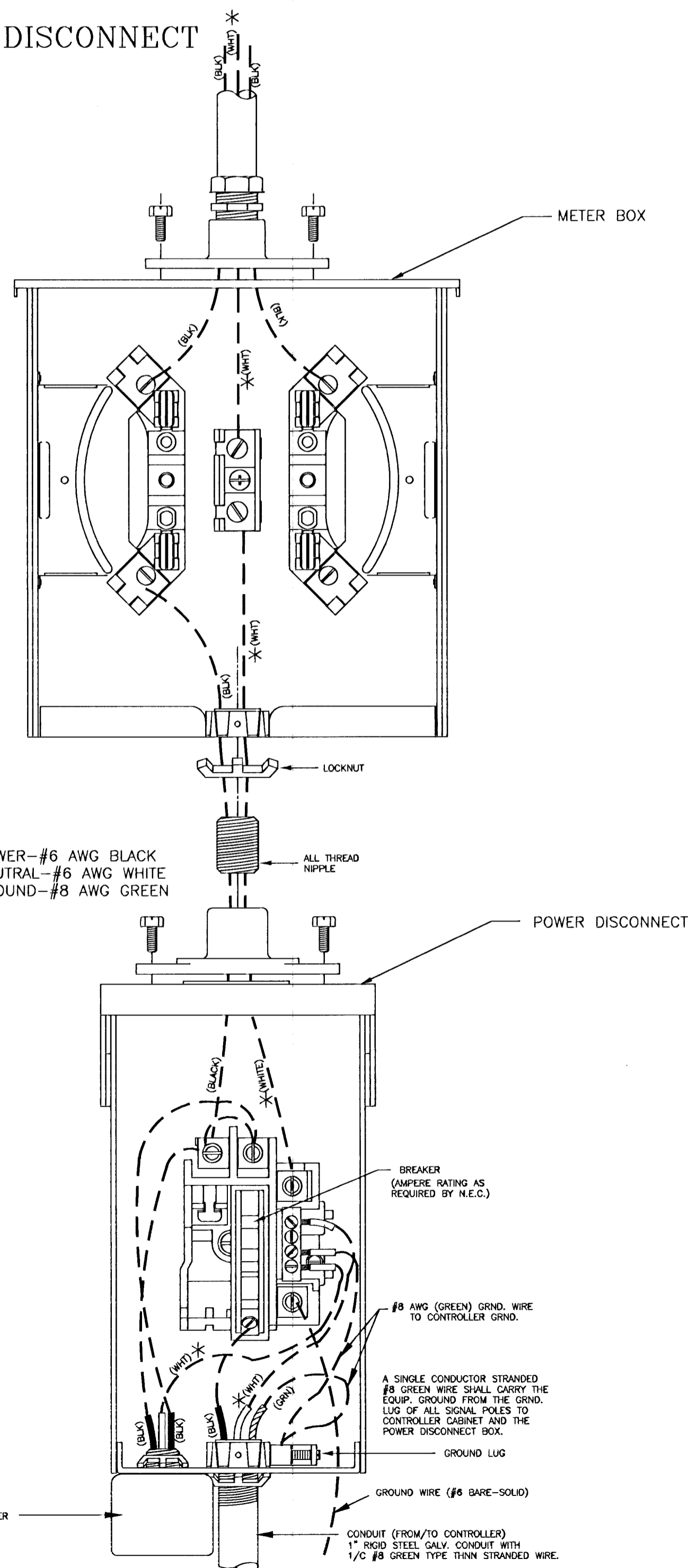
SPANWIRE ASSEMBLY DETAILS

1. MAX. SAG = 5% OF SPAN.
2. STANDARD BACKRAKE = 1.5'
3. HEIGHT OF STRAIN WIRE HOOK-UP TO BE DETERMINED BY FIELD ENGINEER. TRAFFIC SIGNAL CABLE TO BE SECURED TO STRAIN (SPAN) WIRE WEATHERABLE NYLON CABLE HANGERS (12" CTR.) DETAIL 'B'
4. TETHER CLAMP TO BE DESIGNED TO RELEASE UNDER 'HIGH WIND LOAD' TO PERMIT SIGNAL 'FREE SWING'.



METER BOX & POWER DISCONNECT DETAILS

NOTE:
* TO BE MARKED WITH WHITE TAPE



PROJECT DESCRIPTION		PPSP012	
POWER POLE AND SPAN POLE ASSEMBLY DETAILS			
PROJECT NUMBER		472-82966	
DRAWN BY: T.M.	APPROVED BY:	REVISED BY: L.B.	
DATE: FEB. 96		DATE: SEPT. 01	
CITY OF WICHITA DEPARTMENT OF PUBLIC WORKS			
DIVISION OF TRAFFIC ENGINEERING		SCALE	
RANDALL W. HOSKINS, P.E. TRAFFIC ENGINEER		NO SCALE 56 / 87	

6: \CTVIL\98092\DETAILS\PPSP012.dwg Wed Oct 24 17:10:56 2001

1. MODER, TRAFFIC ENGINEER, 2/4/97