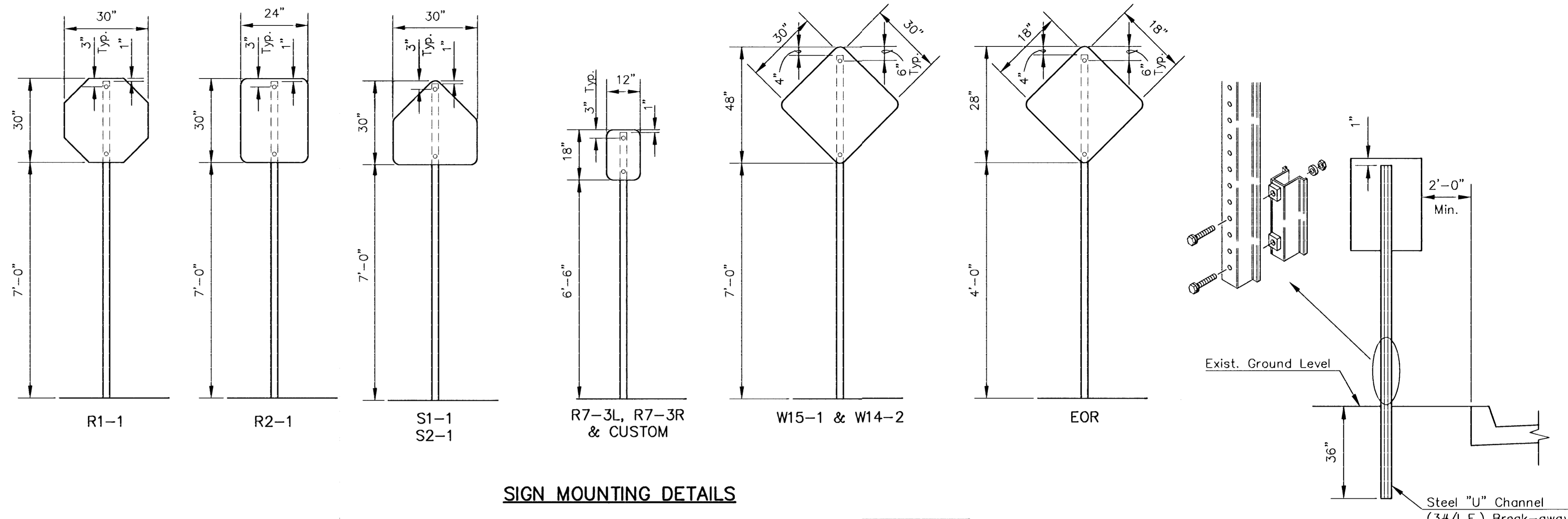


TRAFFIC CONTROL SIGNS & SIGN POST

Station	Location from C	Classification - Each											Sign Post Length			
		R1-1	R2-1	R7-3L	R7-3R	S1-1	SNS	W15-1	S2-1	EOR	W14-2	RELOCATE WAYFINDING SIGN	CUSTOM	Breakaway 1-3/4"x1-3/4"	U-Channel	
Seneca																
22+25	Rt.			1												8.0
23+65	Rt.					1									10.5	8.0
24+05	Rt.				1											
24+52	Lt.						1									
24+58	Lt.	1													10.5	
24+58	Rt.							1							12.0	
25+12	Rt.	1													10.5	
25+13	Lt.					1									10.5	
26+17	Lt.								1						10.5	
28+09	Lt.						1			1						
27+00	Lt.											1			8.0	
28+12	Rt.							1							12.0	
28+13	Lt.	1													10.5	
28+67	Lt.					1									10.5	
28+67	Rt.	1													10.5	
29+20	Lt.					1									10.5	
31+20	Lt.		1												10.5	
31+61	Lt.						**1									
32+47	Rt.						**1									
34+64	Rt.		1												10.5	
35+32	Rt.									1					8.0	
35+40	Rt.									1					8.0	
35+50	Rt.										1				12.0	
38+64	Lt.	1													10.5	
39+13	Lt.															
40+05	Rt.															
40+62	Rt.	1													10.5	
41+89	Lt.															
41+98	Lt.	1													10.5	
45+25	Lt.		1												10.5	
45+54	Lt.						**1									
46+24	Rt.			1											8.0	
46+35	Rt.						**1									
47+60	Rt.		1												10.5	
49+60	Rt.															
50+26	Rt.	1													10.5	
27+77.50	Rt.											1				
29+71.81	Rt.											1				
30+94.19	Rt.											1				
44+72.80	Rt.											1				
50+54.56	Rt.											1				
		* SNS: Street Name Sign See Signing Detail Sheet														
		** SNS: Street Name Sign Mounted on Mast Arm Pole														
Total		50	20	3	1.5	2.5	10	12.5	6.25	4.5	6.25	5	1	214.5	48	



SIGN POST LENGTH SUMMARY *

BREAKAWAY SIGN POST:	
1 3/4"x1 3/4" LENGTH	EACH
10-1/2'	17
12'	3
2-1/4"x2-1/4"x18"	20
2"x2"x36"	20
U-CHANNEL	
LENGTH	EACH
STUBS 3'	6
POSTS 8'	6
POSTS 9'	
POSTS 9-1/2'	
POSTS 11'	

* For Information Only

RECAPITULATION OF MATERIALS *

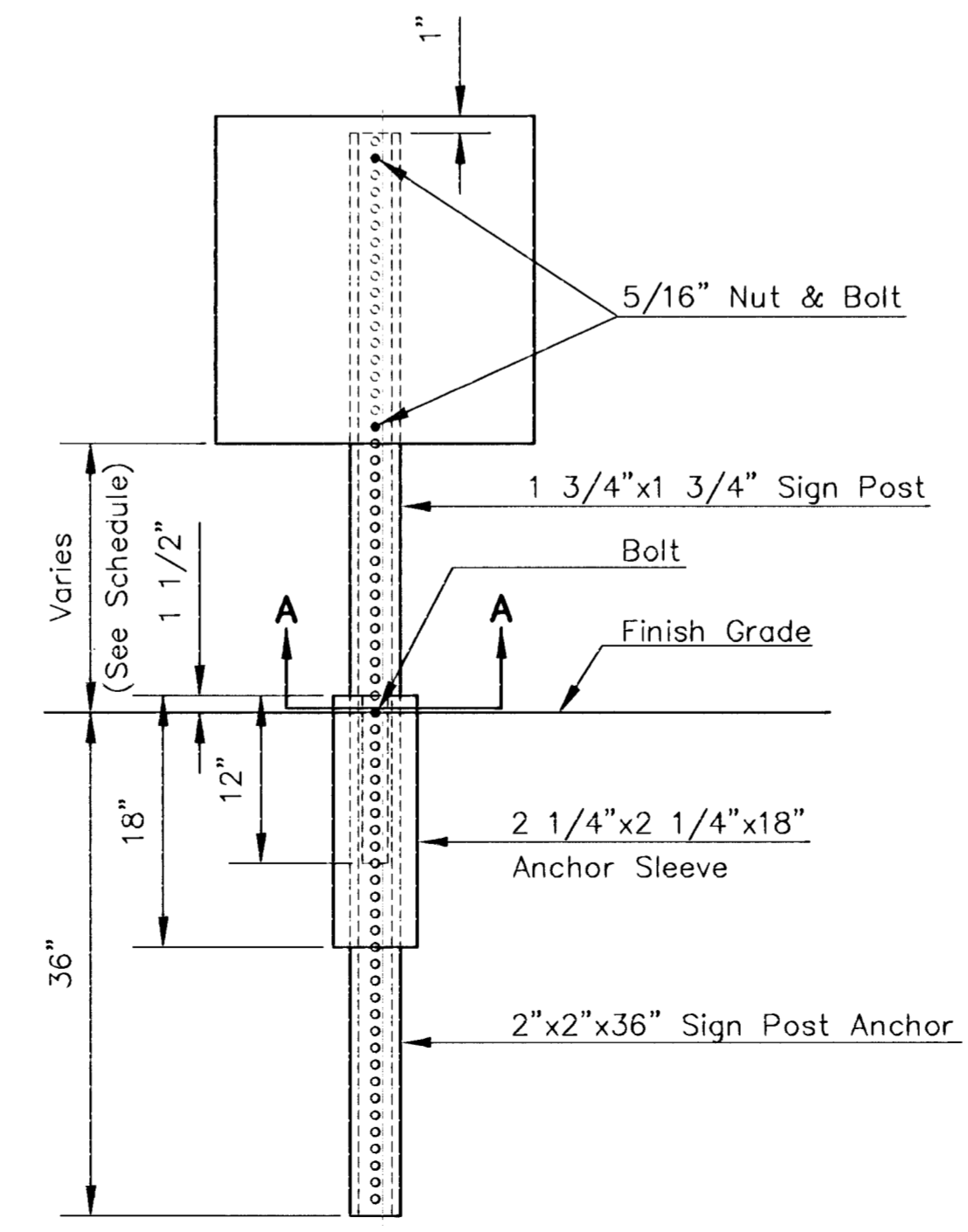
ITEMS	TOTAL	UNIT
Sign Face, (High Intensity HA Reflective Sheeting)	130.5	S.F.
Steel "U" Channel Sign Post	72	L.F.
Breakaway Sign Post, 1-3/4" x 1-3/4"	214.5	L.F.
Breakaway Anchor Sleeve, 2-1/4" x 2-1/4" x 18"	30	L.F.
Breakaway Sign Post Anchor, 2" x 2" x 36"	60	L.F.
Street Name Sign Assembly (Per Signing Detail Sheet)	10	EACH

RECAPITULATION OF MATERIALS

BID ITEMS	TOTAL	UNIT
Signing	LUMP SUM	S.F.

SIGN DESCRIPTION

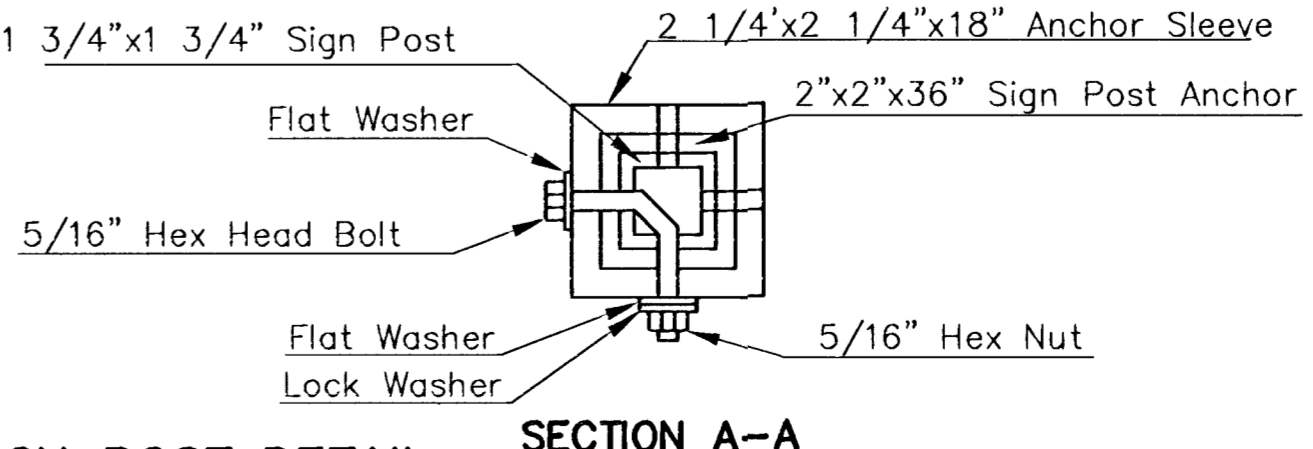
CLASSIFICATION	TYPE	SIZE	AREA
R1-1	STOP SIGN	30"x30"	6.25 SQ. FT.
R2-1	SPEED LIMIT	24"x30"	5.00 SQ. FT.
S1-1	DESIGNATES SCHOOL	30"x30"	6.25 SQ. FT.
R7-3L	NO PARKING EXCEPT SUNDAYS	12"x18"	1.50 SQ. FT.
R7-3R	NO PARKING EXCEPT SUNDAYS	12"x18"	1.50 SQ. FT.
W15-1	PLAYGROUND	30"x30"	6.25 SQ. FT.
S2-1	SCHOOL CROSSING	30"x30"	6.25 SQ. FT.
W14-2	NO OUTLET	30"x30"	6.25 SQ. FT.
EOR	END OF ROADWAY	18"x18"	2.25 SQ. FT.
CUSTOM	GUN FREE, GUN FREE SCHOOL ZONE	12"x18"	1.50 SQ. FT.



- PAVEMENT INSTALLATION SEQUENCE**
- SIGN POST ANCHOR DRIVEN INTO SUBGRADE PRIOR TO THE PLACEMENT OF THE PAVEMENT.
 - ANCHOR SLEEVE DRIVEN INTO SUBGRADE OVER THE SIGN POST ANCHOR PRIOR TO THE PLACEMENT OF THE PAVEMENT.
 - INSERT SIGN POST INTO THE SIGN POST ANCHOR AND BOLT IN PLACE.
- GROUND INSTALLATION SEQUENCE**
- SIGN POST ANCHOR DRIVEN INTO THE GROUND.
 - ANCHOR SLEEVE DRIVEN INTO THE GROUND OVER THE SIGN POST ANCHOR.
 - INSERT SIGN POST INTO THE SIGN POST ANCHOR AND BOLT IN PLACE.

NOTE: IN ALL INSTALLATIONS THE FIRST HOLE ABOVE THE FINISHED GRADE LEVEL IN ALL THREE UNITS MUST BE IN LINE FOR INSERTION OF THE BOLT.

ALL BOLTS AND NUTS FOR FASTENING THE SIGNS AND SIGN POST ASSEMBLY SHALL COMPLY WITH SECTION 1614 AND ALL WASHERS SHALL COMPLY WITH SECTION 1614 OF THE STANDARD SPECIFICATION FOR STATE ROAD AND BRIDGE CONSTRUCTION (1990 EDITION) AND SHALL BE SUBSIDIARY ITEM.



TRAFFIC SIGN INSTALLATION DETAIL FOR SIGNS NOT GREATER THAN 12" WIDE

BREAK-AWAY SIGN POST DETAIL

WICHITA, KANSAS

SIGNING DETAILS

JOB NO. DATE: CH'KD: SCALE: NONE DRAWN: APPVD: SH. 60 OF 87