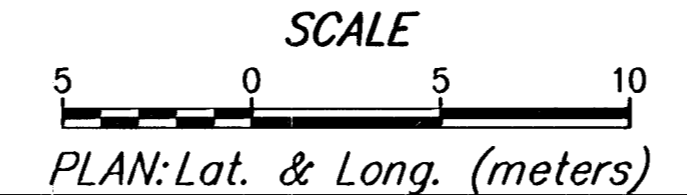
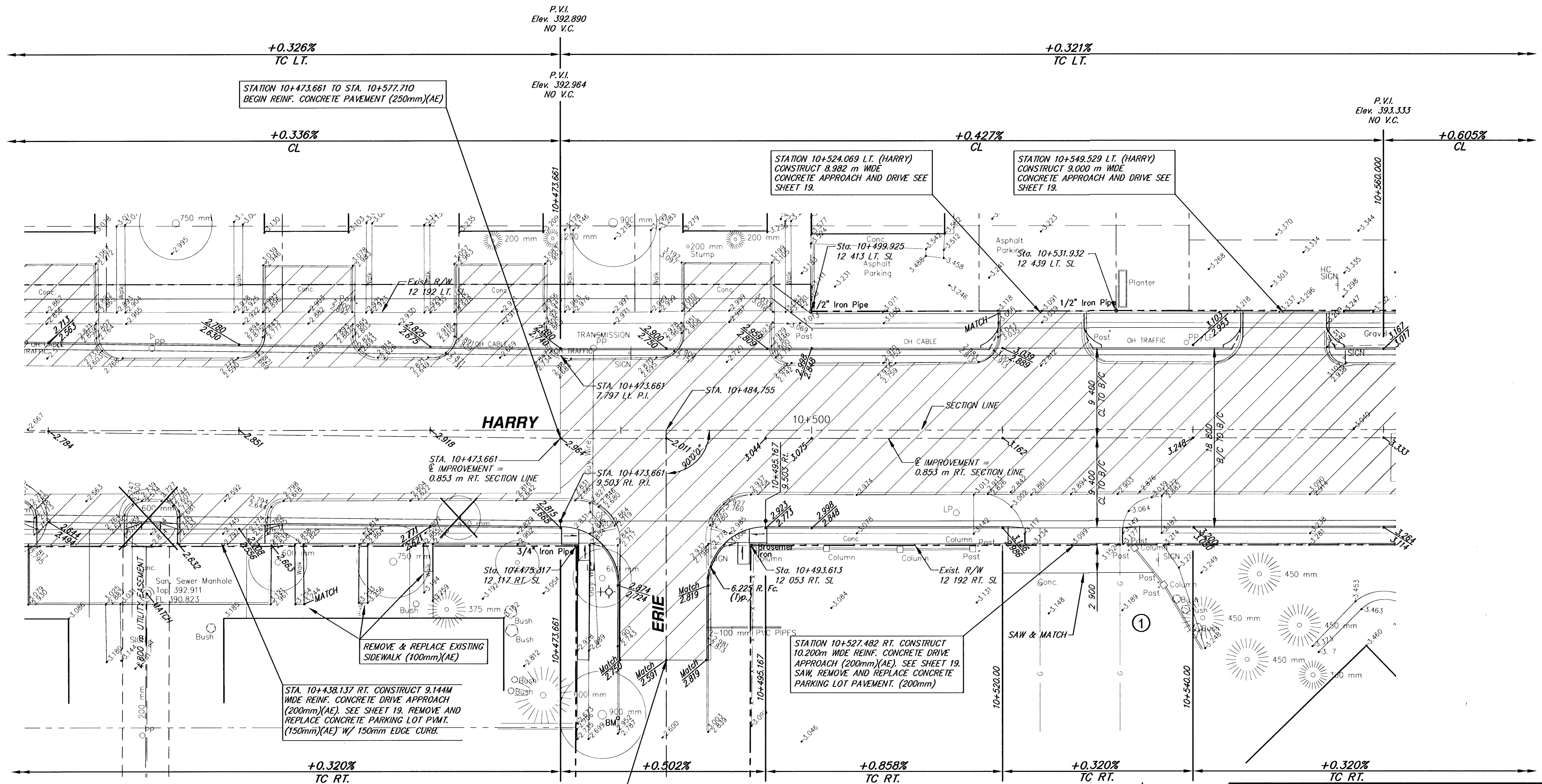


FHWA REGION NO.	STATE	PROJECT NUMBER	FISCAL YEAR	SHEET NUMBER	TOTAL SHEETS
7	KANSAS	87 N-0229-01	2004	10	62



BM #4 " " CUT ON WEST TOP OF CURB OF ERIE 30 m± SOUTH OF SECTION LINE ON HARRY. ELEV. 392.953

HARRY
STATION 10+420.00 TO STATION 10+555.00
WICHITA, KANSAS

<p>Ruggles & Bohm, P.A. Engineering, Surveying, Land Planning 924 North Main Wichita, Kansas 67203 www.rbkansas.com</p>	<p>DESIGN TCR DRAWN RA/EJB REVIEW UTILITY</p>	<p>SHEET 10 OF 62</p>