

FHWA REGION NO.	STATE	PROJECT NUMBER	FISCAL YEAR	SHEET NUMBER	TOTAL SHEETS
7	KANSAS	87N-0080-01	1997	11	162

DATE	BY

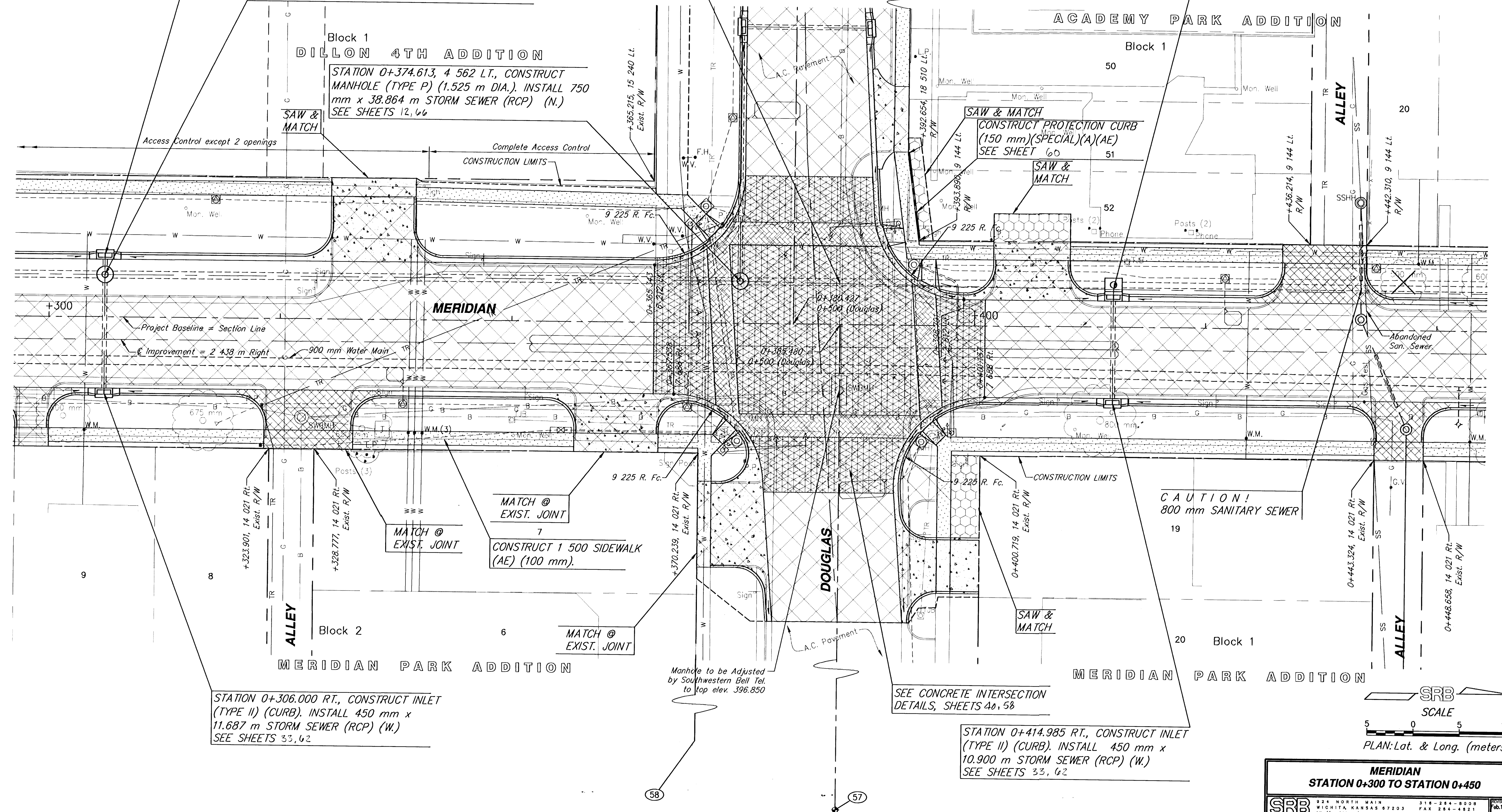
REFERENCES NOTED	REFERENCES CHECKED

STATION 0+306.000 LT., CONSTRUCT INLET (TYPE II) (CURB). INSTALL 450 mm x 1.087 m STORM SEWER (RCP) (E.) SEE SHEETS 33, 62

STATION 0+306.000, 4 562 LT., CONSTRUCT MANHOLE (TYPE P) (1.525 m DIA.). INSTALL 750 mm x 67.088 m STORM SEWER (RCP) (N.) SEE SHEETS 12, 66

TELEPHONE DUCT TO BE ADJUSTED TO S.W.B.T. PRIOR TO CONSTRUCTION

STATION 0+414.985 LT., CONSTRUCT INLET (TYPE 2R) (CURB) (SPECIAL). INSTALL 0.30 SQ. m x 82.294 m STORM SEWER (RCPHE) (N.) SEE SHEETS 12, 64

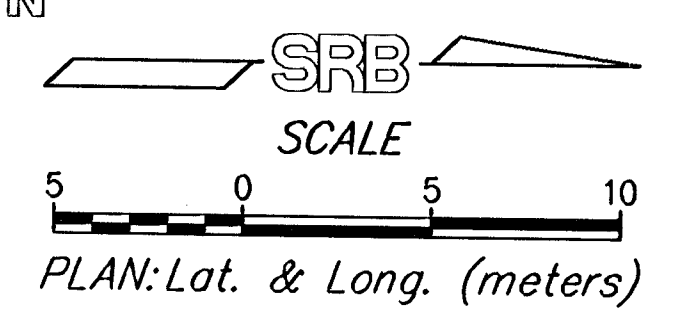


STATION 0+306.000 RT., CONSTRUCT INLET (TYPE II) (CURB). INSTALL 450 mm x 11.687 m STORM SEWER (RCP) (W.) SEE SHEETS 33, 62

STATION 0+414.985 RT., CONSTRUCT INLET (TYPE II) (CURB). INSTALL 450 mm x 10.900 m STORM SEWER (RCP) (W.) SEE SHEETS 33, 62

BM #3 " " CUT IN TOP OF CURB @ EAST RETURN OF NORTH ENTRANCE TO DILLONS @ DOUGLAS & MERIDIAN ELEV. 396.842

CAUTION! 800 mm SANITARY SEWER



**MERIDIAN STATION 0+300 TO STATION 0+450**

**SRB** 924 NORTH MAIN WICHITA, KANSAS 67203  
316-264-8008 FAX 264-4821  
http://www.srb.com/srb E-Mail: srbsales@srb.com

**SAVOY, RUGGLES & BOHM, P.A.**  
ENGINEERING & SURVEYING

PROJECT NUMBER: 472-76-245-82740-000-000-001

DATE: Jan. 8, 1999

DESIGNER: T.C.R. CHECKER: J.R. DATE: Jan. 8, 1999 UTILITY: SRB JOB: 539T

11  
162